



Sansa e260R Front Panel Replacement

Removing a broken case

Written By: Casey Smith





TOOLS:

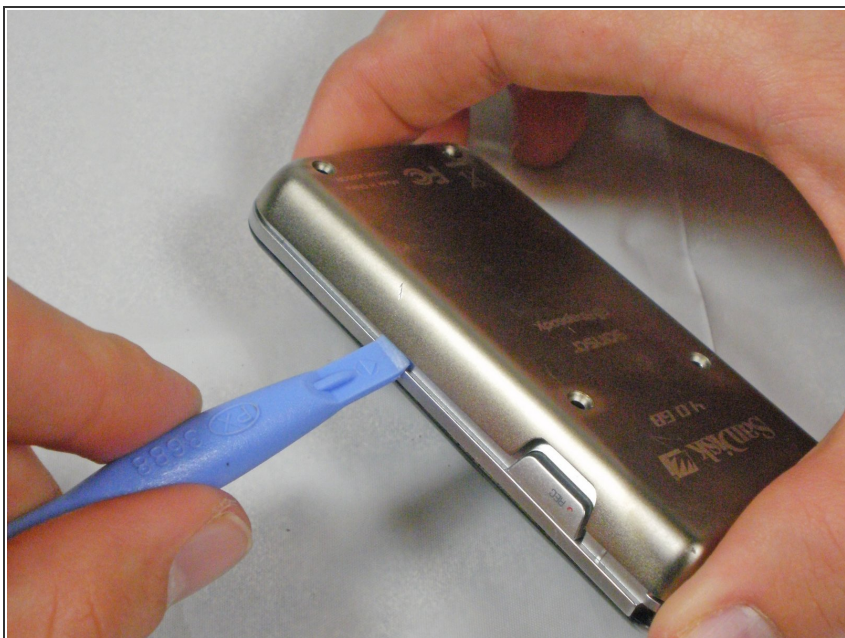
- [Phillips #00 Screwdriver](#) (1)
 - [iFixit Opening Tools](#) (1)
-

Step 1 — Rear Case



- ❗ Before disassembling the device, make sure it is powered off.
- Remove the four 1.5mm screws on the back of the device.

Step 2



- Using a plastic opening tool, lift the metal backing from the front of the device.

Step 3



- Pull the rear panel off of the Sansa e260R.

Step 4 — Battery



- Grip the bottom of the battery with your thumb and forefinger and pull it away from the device.

Step 5 — Front Panel



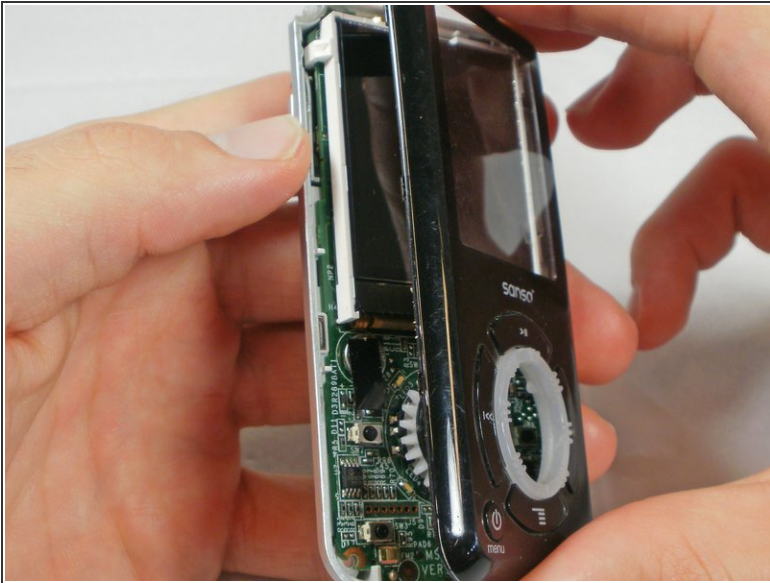
- Remove the four 1.5mm screws on the inner casing of the device.
- ⓘ These screws are very small and hard to extract from the casing. It may be helpful to use a magnetic screwdriver.

Step 6



- Flip the device so that the front is facing you.
- Slide a plastic opening tool between the plastic front cover and the metal back cover of the device.

Step 7



- Pull the front cover away from the rest of the device.

To reassemble your device, follow these instructions in reverse order.