



ProScan PLT7050 Battery Replacement

Is the life of your device getting shorter or not holding a charge? Use this guide to replace the battery.

Written By: Jazmine Jackson



INTRODUCTION

This is the battery replacement guide for the Proscan PLT 7050. If you find the need to replace the battery, please follow these steps.



TOOLS:

- [iFixit Opening Tools](#) (1)
 - [Soldering Iron](#) (1)
 - [Phillips #00 Screwdriver](#) (1)
-

Step 1 — Open Device



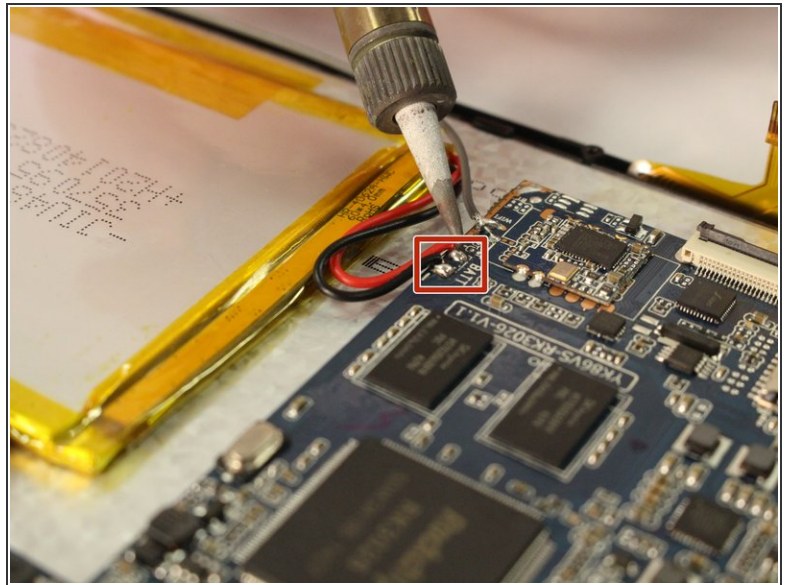
- Make sure device is unplugged and turned off while working on the device.
- Remove 2 Phillips head, 4.3 mm screws from the bottom side of the tablet with a PH00 screwdriver.

Step 2



- Use the plastic opening tools to pry the back of the tablet open.
 - You may need to slide the tool along the sides of the device to get it to open. You might hear some popping noises, it is okay.
- i** May be helpful if you start by the microSD slot.

Step 3 — Battery



- Use the soldering tool to remove the wires from the motherboard. (Black and Red)

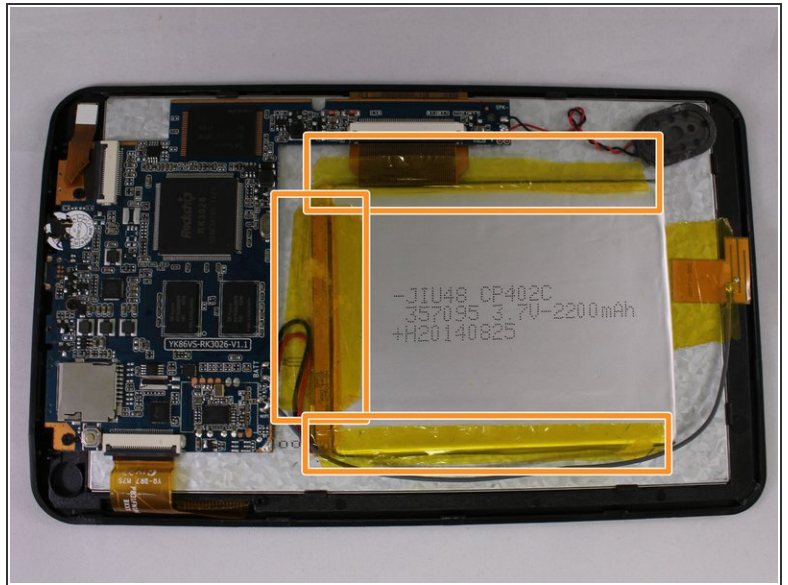


The soldering tool is hot.



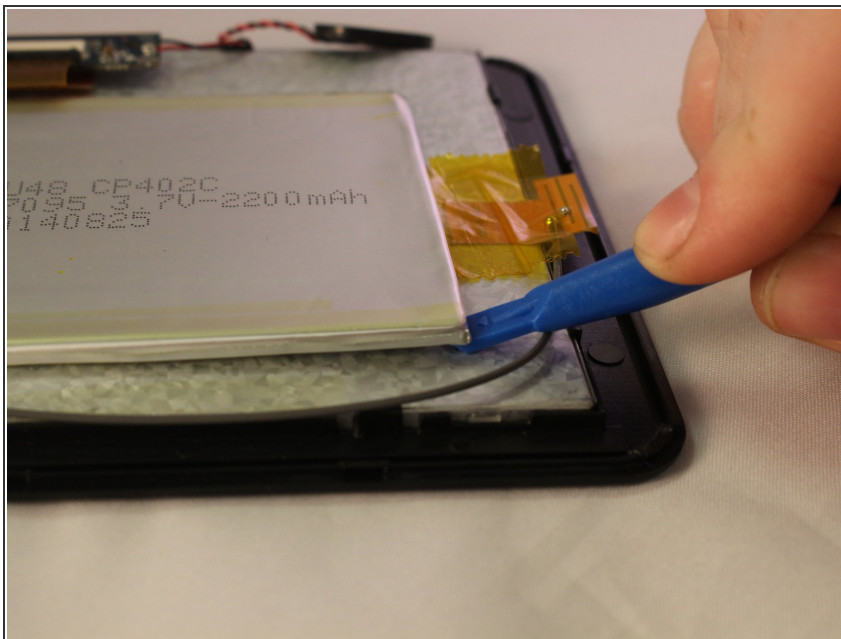
Take note of where the wires are located.

Step 4



- Remove the black tape from the battery.
- Remove the three pieces of yellow tape from the battery.

Step 5



- Use the plastic opening tool to pry the battery from the device as it is attached by an adhesive.
- ⚠ Do not proceed if corrosion and/or swelling of the battery is visible.

To reassemble your device, follow these instructions in reverse order.