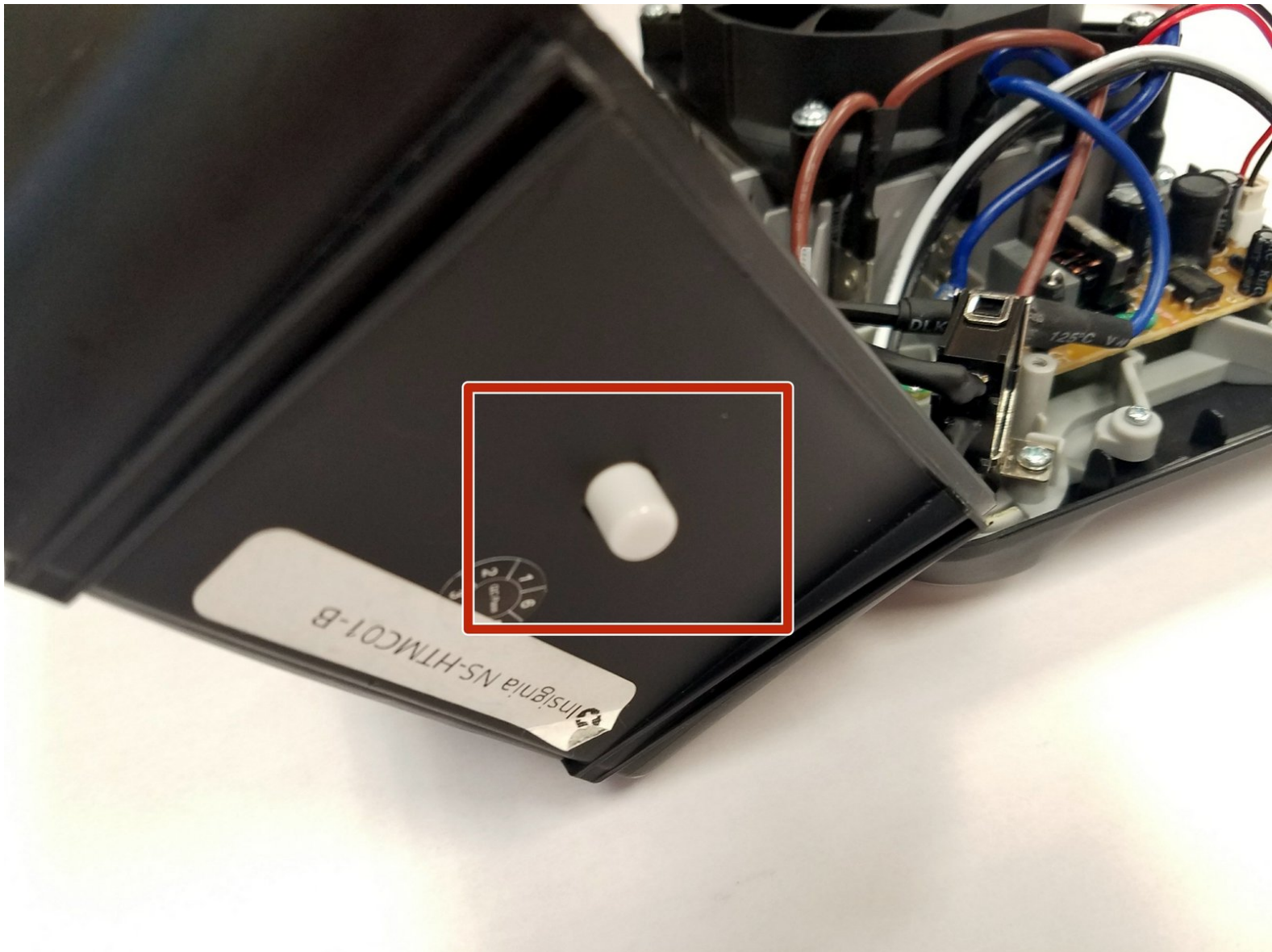




Insignia NS-HTMC01-B Tip-Over Safety Switch Replacement

Replace a defective Tip-Over Safety Switch to make sure the heater turns off when it is knocked over.

Written By: Rebecca Nunez



INTRODUCTION

This guide will take you through the process of replacing the Tip-Over Safety Switch inside the Insignia NS-HTMC01-B.



TOOLS:

- [Phillips #0 Screwdriver](#) (1)
 - [Phillips #2 Screwdriver](#) (1)
 - [Phillips #00 Screwdriver](#) (1)
-

Step 1 — Front Case



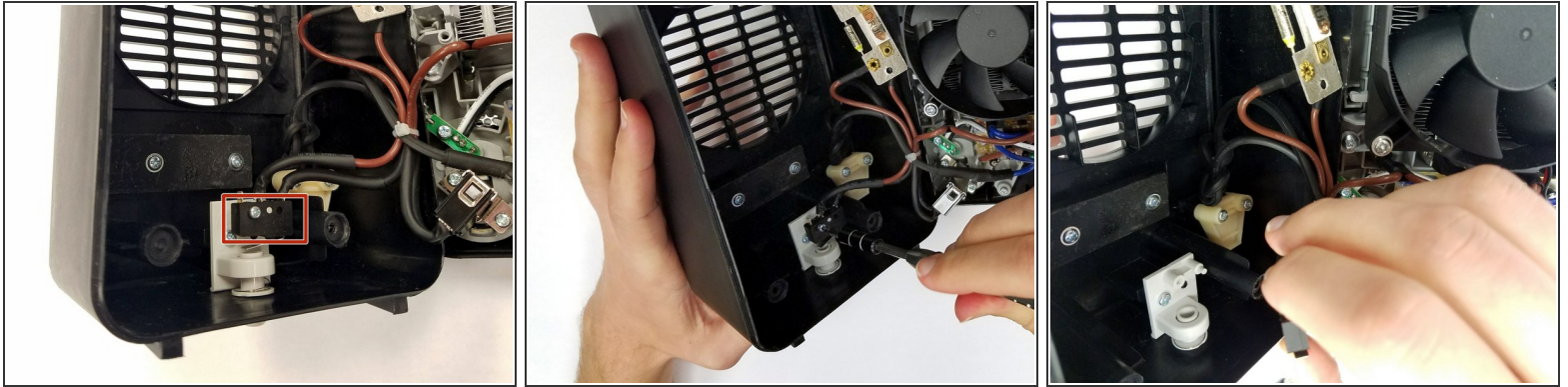
- Flip the device over so the back panel faces up.
- Unscrew the four screws counter-clockwise from the back panel using a 4mm Phillips screwdriver.
 - ⓘ You may want to use a flashlight during this step, as the screws are hard to see.
- ⚠ Make sure to firmly connect your screwdriver with the head of the screw. A loose connection can strip the screw head, making the screws nearly impossible to remove.

Step 2



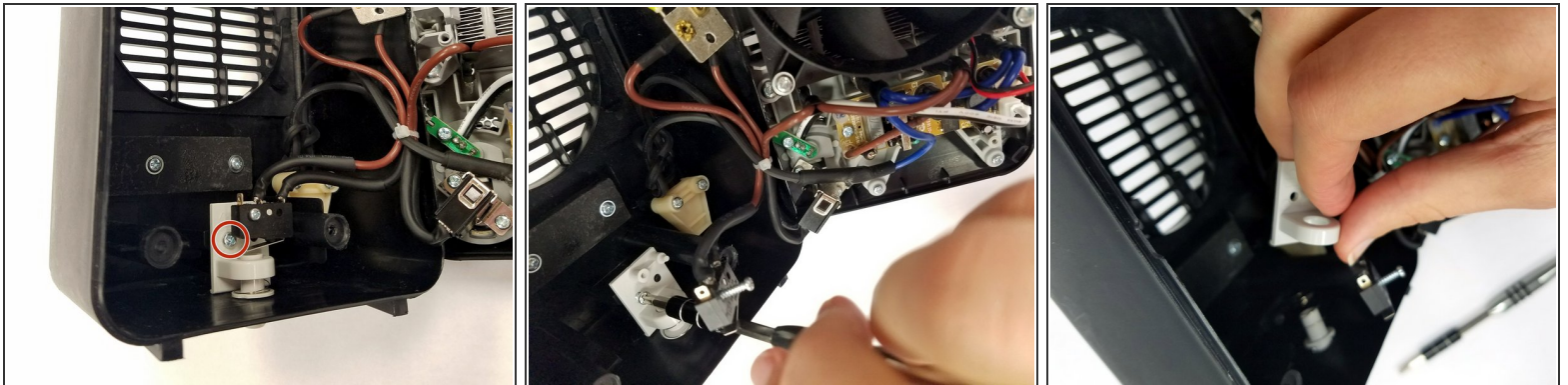
- Take the screws out and set them aside.
 - ⓘ Be sure to set them somewhere flat, so they don't roll away.
- Gently pull the front panel and back panel apart to open the device.

Step 3 — Tip-Over Safety Switch



- Use a Phillips #0 screwdriver to remove the 1.3mm screw on the black rectangle above the Tip-Over Safety Switch.

Step 4



- Use a Phillips #2 screwdriver to remove the 0.9mm screw from the back panel of the Tip-Over Safety Switch.
- Remove the back panel and the Tip-Over Safety Switch.

To reassemble your device, follow these instructions in reverse order.