

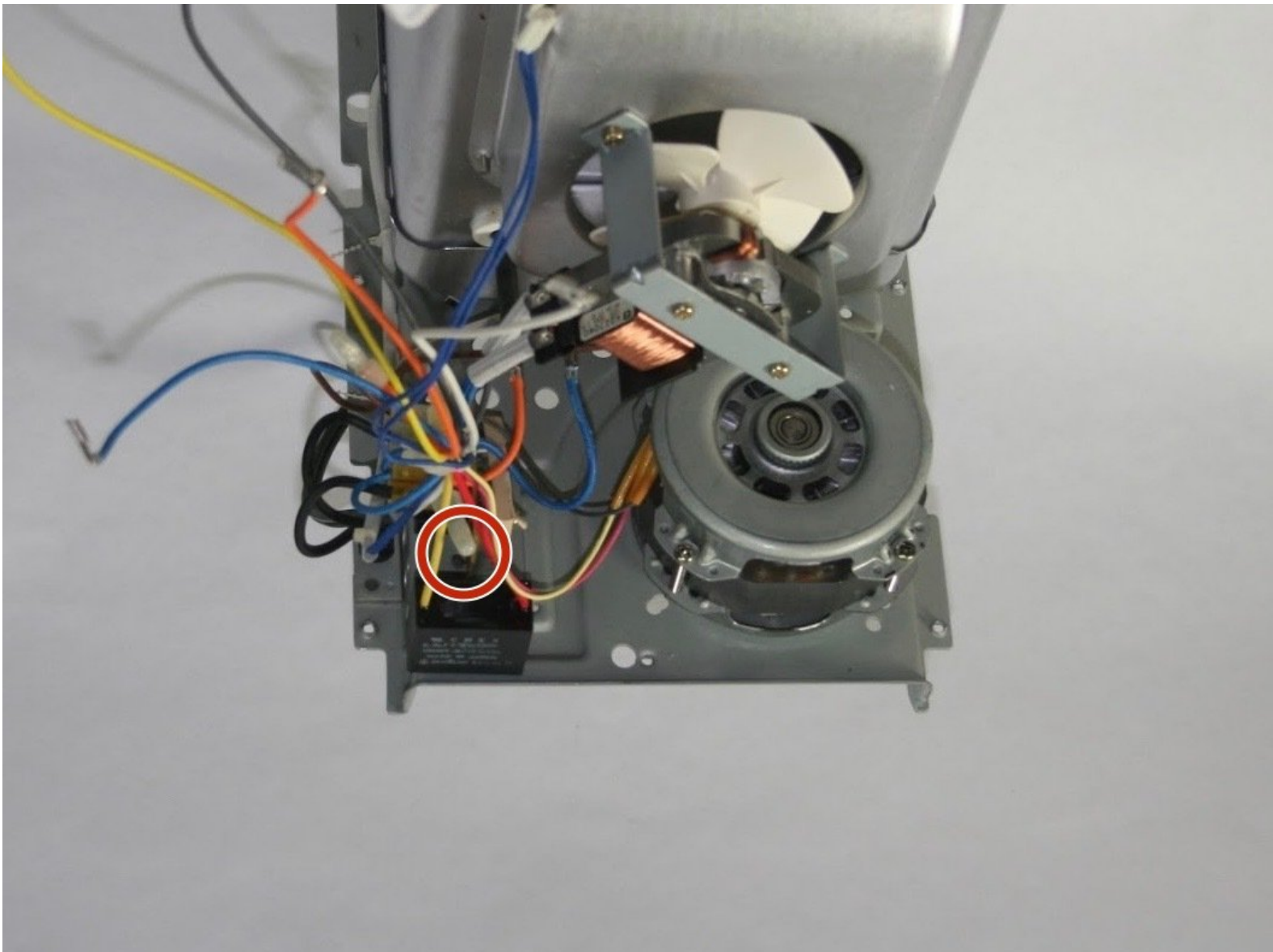


# Hitachi HB-B102 Automatic Home Bakery II

## Motor Replacement

This guide will show you how to replace a Hitachi HB-B102 motor which turns the belt which then turns the axel and subsequently the mixing paddle.

Written By: Ally Swian



## INTRODUCTION

This guide will show you how to replace a Hitachi HB-B102 motor which turns the belt which then turns the axel and subsequently the mixing paddle. This guide does require being able to wire in a new motor, so don't cut any wires before you know you can wire a new motor back in.



### TOOLS:

- [Phillips #2 Screwdriver](#) (1)
- [Metal Spudger](#) (1)
- [Utility Scissors](#) (1)
- [Flush Wire Cutters](#) (1)

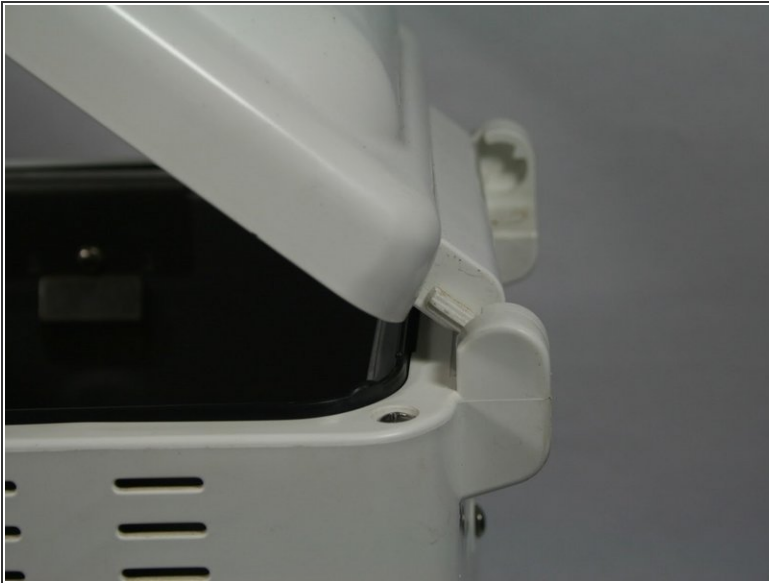
*Can use scissors if needed*




### PARTS:

- [Replacement Motor](#) (1)

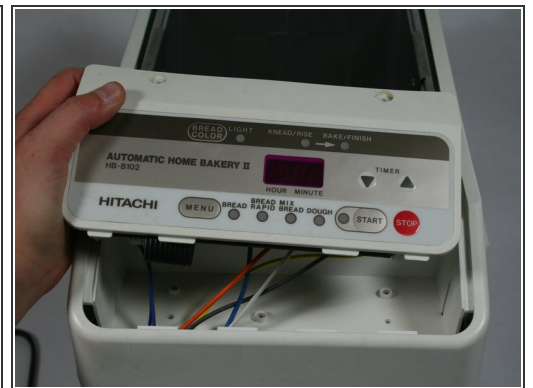
## Step 1 — Outer Casing



 Make sure to unplug the device before starting.

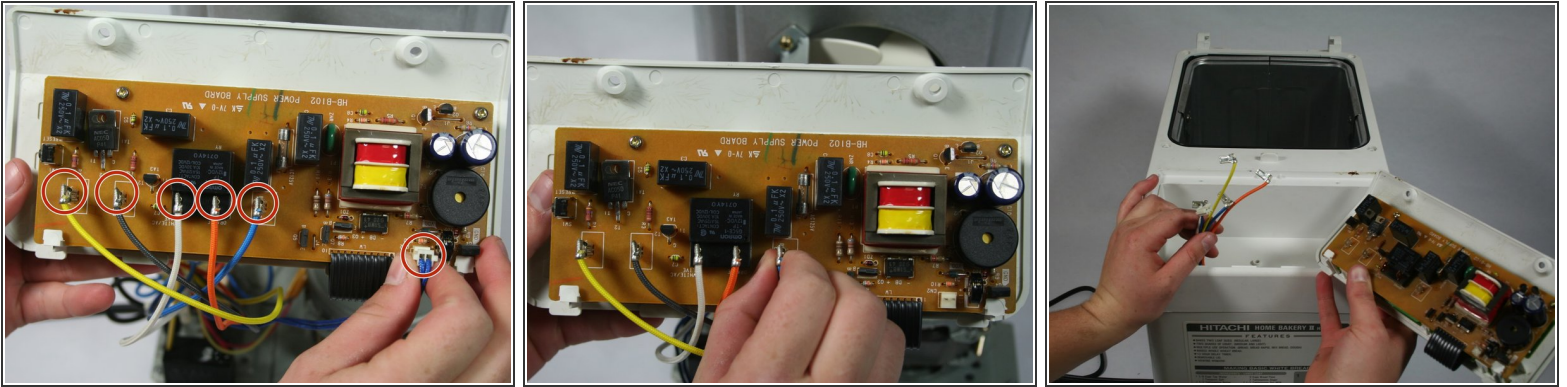
- Remove the lid by opening it to a 45 degree angle and pulling out.

## Step 2



- Next, remove the two 1.3cm screws that hold on the control panel with a #2 Phillips head screwdriver. These screws, and the rest of the screws in this guide can all be removed using a #2 Phillips head screwdriver.
- Then pull the control panel out of the device by using a metal spudger to pry it up. Flip it over and look at the back of the motherboard.

## Step 3



- You will then have to disconnect the six wires that connect the motherboard to the device. This can be done by firmly grasping a connector and pulling straight out from the unit. Once all of the wires have been disconnected, set aside the control unit.

## Step 4



- Remove the five 1cm screws that hold the the casing together. There will be two on each side, and one on the back.

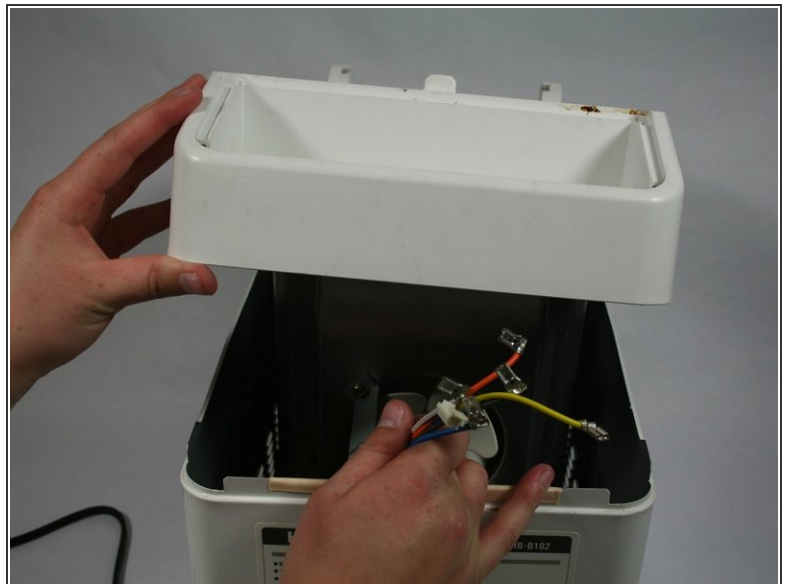


## Step 5



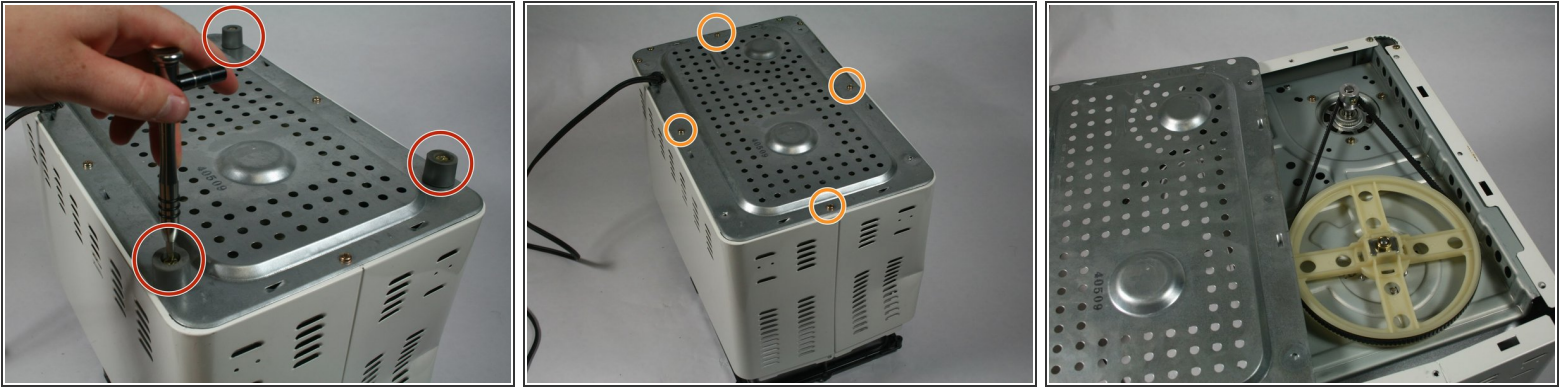
- Unscrew the four 1.4 cm screws surrounding the slot for the bread pan.

## Step 6



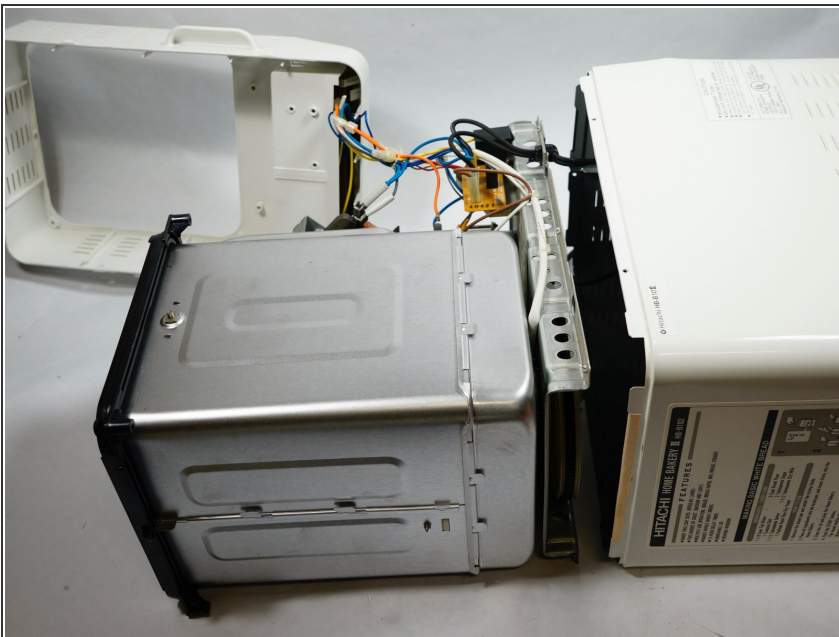
- Now you can remove the top part of the assembly off by pulling straight up. Don't forget to gently pull your wires through.

## Step 7



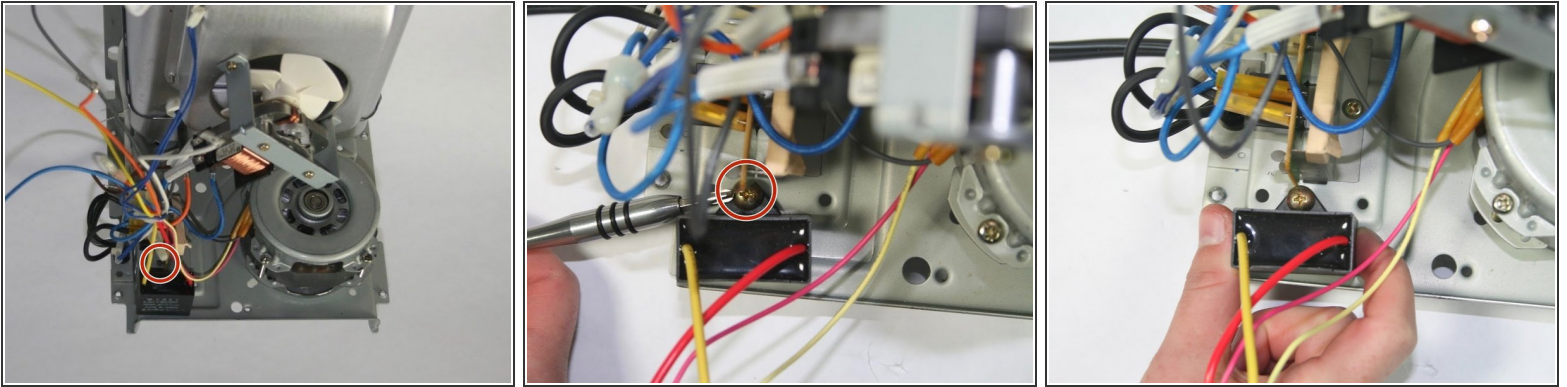
- Flip the machine over so that the bottom is facing straight up. Then unscrew the four feet on the device with a #2 Phillips head screwdriver. The screws will stay in the rubber feet.
- Next, remove the four 8mm screws on the four sides of the machine. You do not need to unscrew the screws on the front end corners.
- Once the feet and screws are undone gently pull the metal plate off.

## Step 8



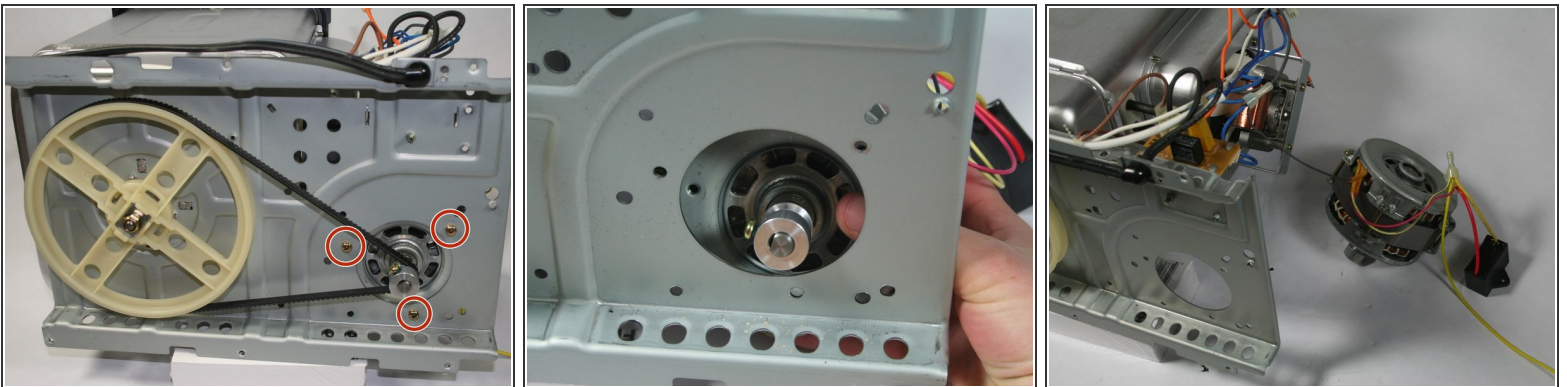
- Now that the bottom plate and top housing are off, you can gently pull the inner components out of the outer metal housing . This can be done by grabbing hold of the bread pan casing and slowly lifting the entire inner assembly straight up.
- You now have access to the belt and motor.

## Step 9 — Motor



- Locate the capacitor (aka the black box) to the left of the motor). Unscrew the 1cm screw holding the capacitor in place. The screw will stay with the capacitor.
- Lift the capacitor and place to the side.

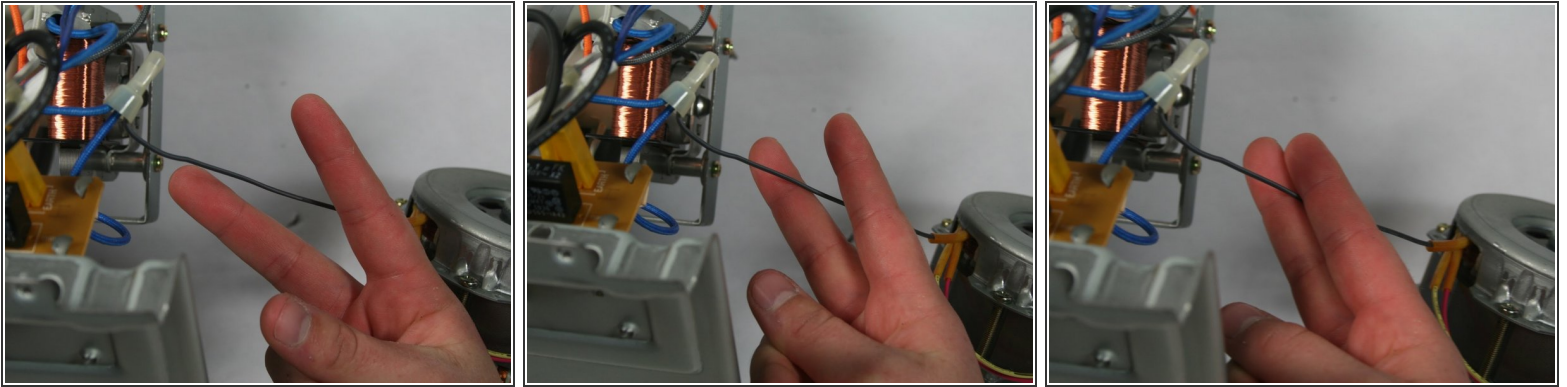
## Step 10



- Flip the bread maker on its side so you can access the bottom. The belt will need to be removed. For help on that please see: [Hitachi HB-B102 Automatic Home Bakery II Belt Replacement](#)
- Unscrew the three 6mm screws holding the motor to the metal plate.
- Gently pull the motor away from the metal plate.



## Step 11



- Now that you have the motor out, locate the black cable coming out of the motor and linking it to two blue cables.
- You'll need to cut this wire with scissors or wire cutters.
- Next, you'll need to wire in your new motor. To do this follow this handy guide: [Wire Stripping and Crimping 101](#)

To reassemble your device, follow these instructions in reverse order.