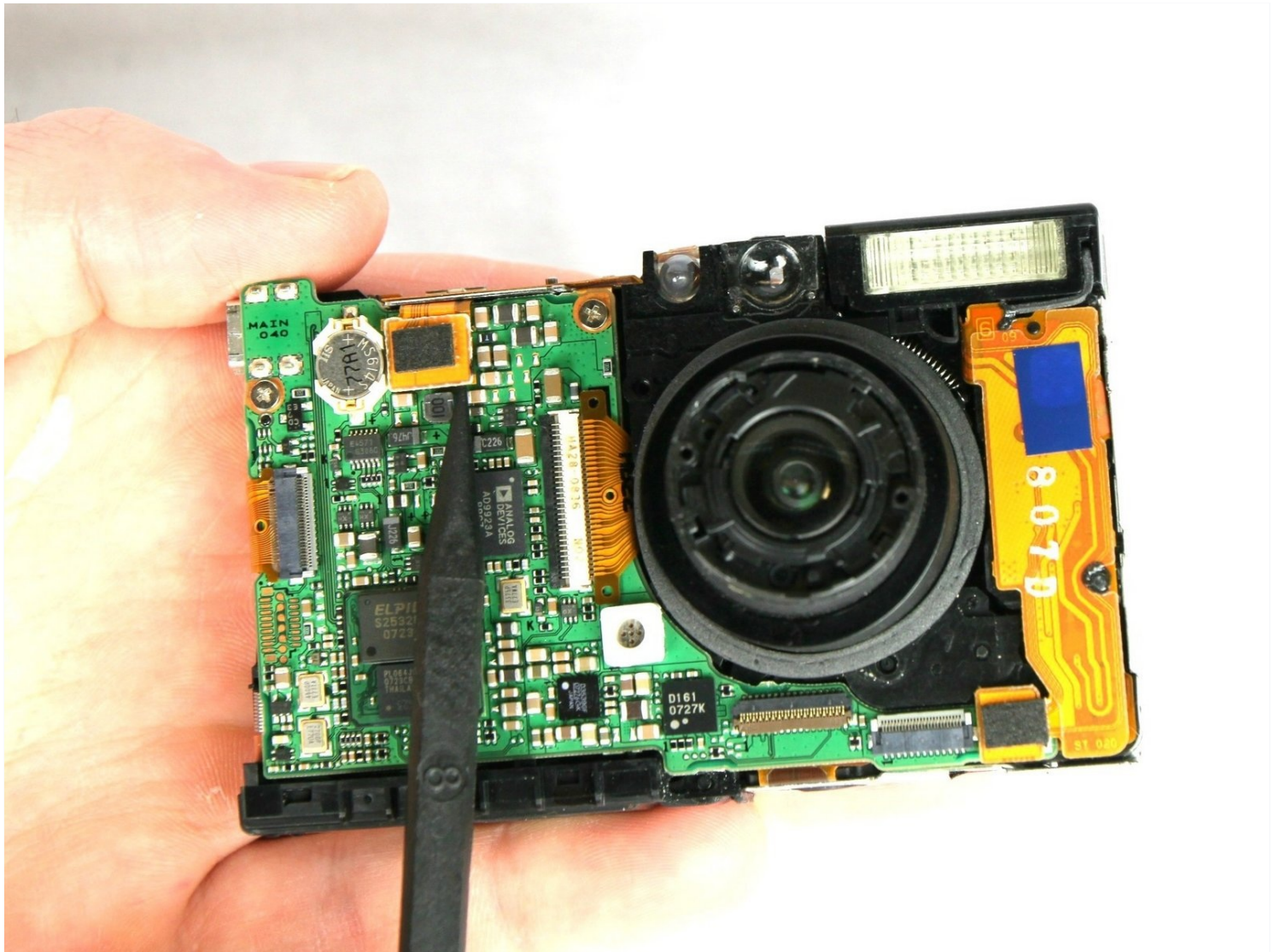




# Canon PowerShot SD1000 Lens Replacement

Written By: Phillip Phung

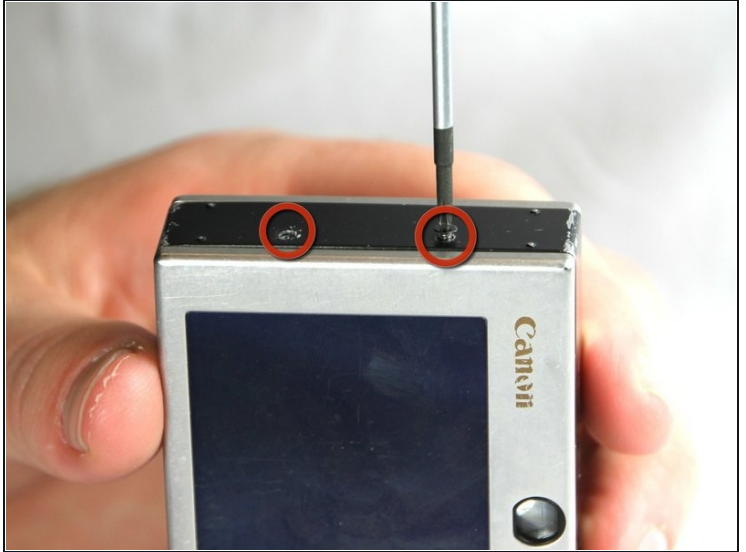


## TOOLS:

Phillips #00 Screwdriver (1)

Spudger (1)

### Step 1 — Back Panel



- Remove the two 2.9 mm screws from the side panel closest to the camera lens.

### Step 2



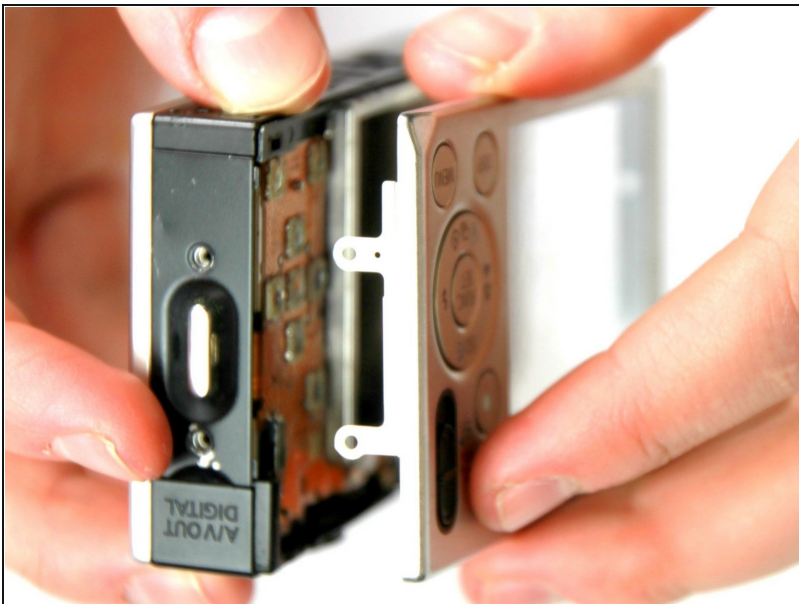
- Remove the two 2.9 mm screws from the camera bottom panel.

### Step 3



- Remove the two 2.9 mm screws from the side panel farthest from the lens.

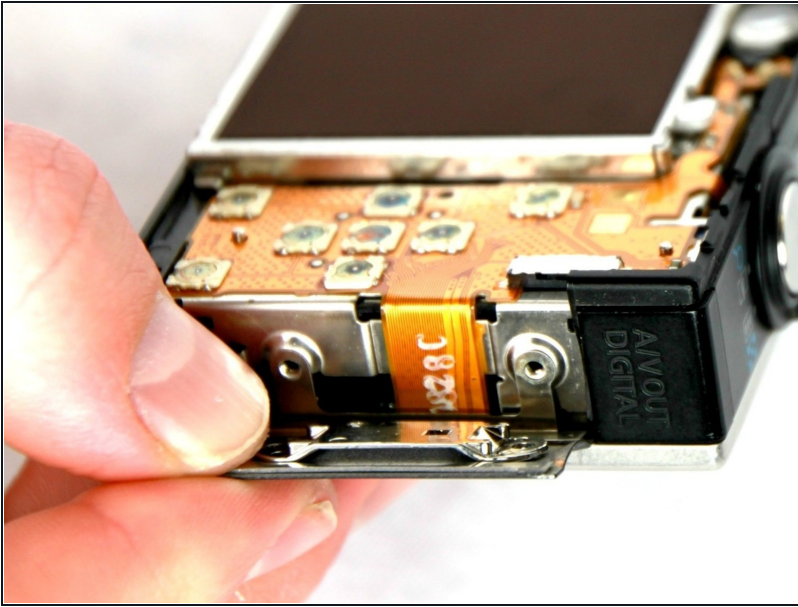
### Step 4



- Pull the back panel away from the camera body, starting at the end with the function buttons.

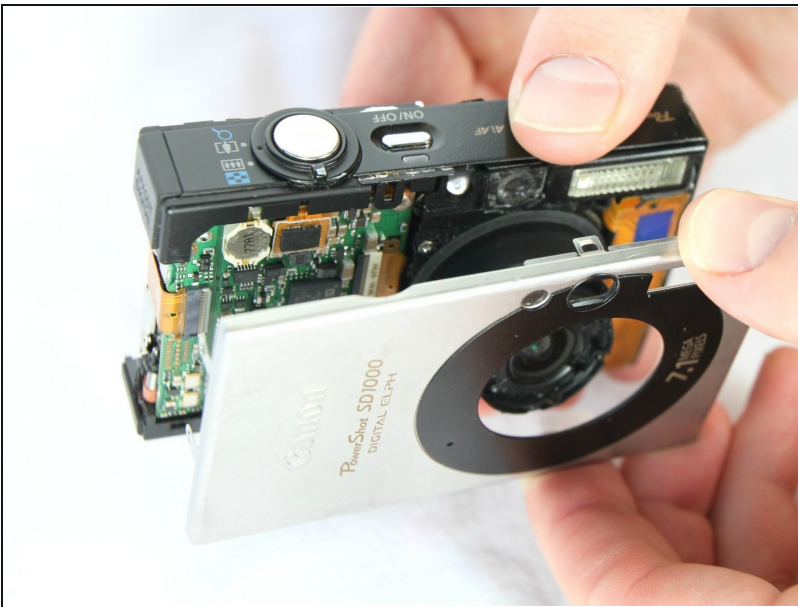


## Step 5



- Remove the small cover panel and the attached wrist strap mount.

## Step 6 — Front Case



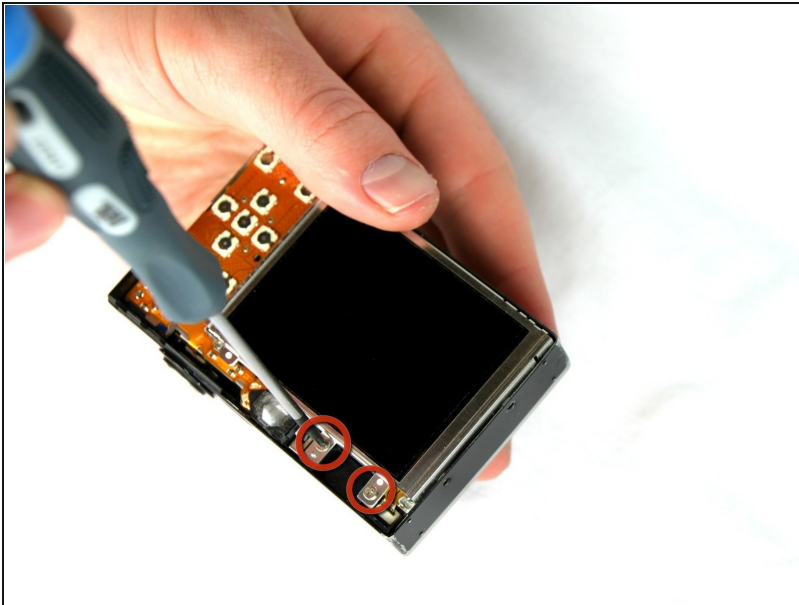
- Remove the front cover by gently pulling it away from the camera body.

## Step 7



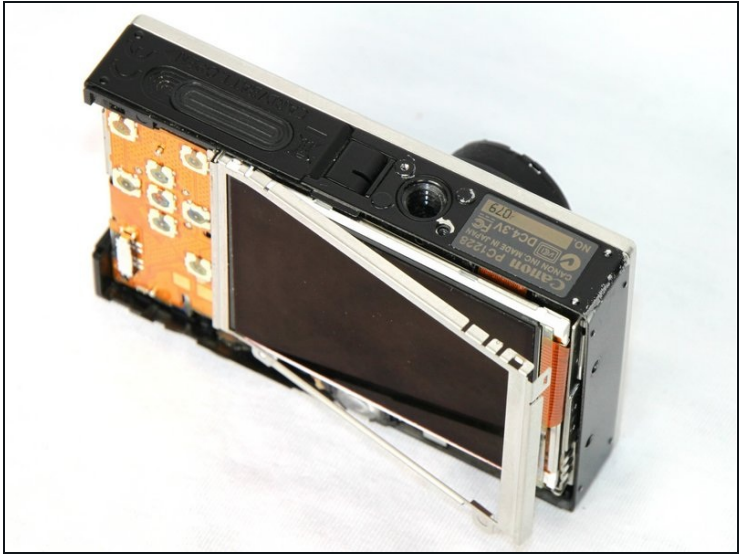
- Place the front cover, back cover, and wrist strap mount in a safe place until you are ready for reassembly.

## Step 8 — LCD Screen



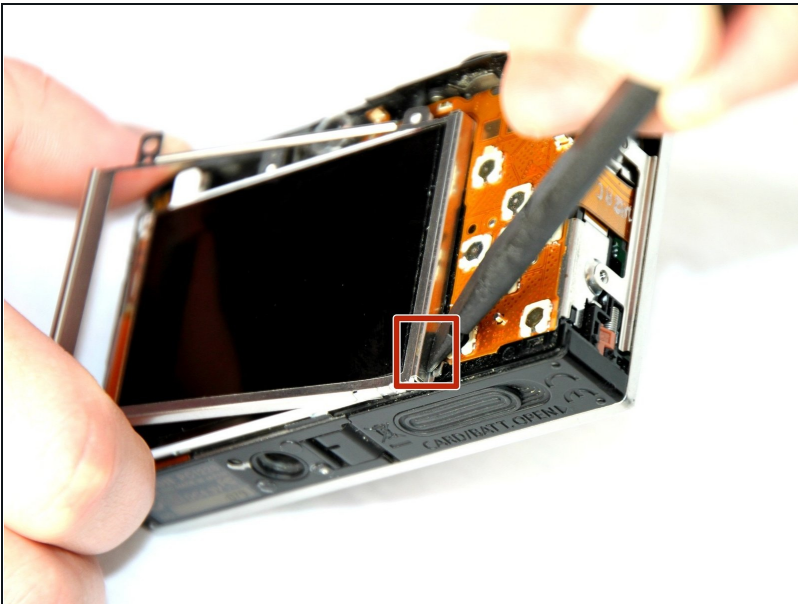
- Remove the two 2.4 mm screws located at the top of the LCD panel.

## Step 9



- Pull up the metal frame surrounding the LCD screen starting at the side of the camera.

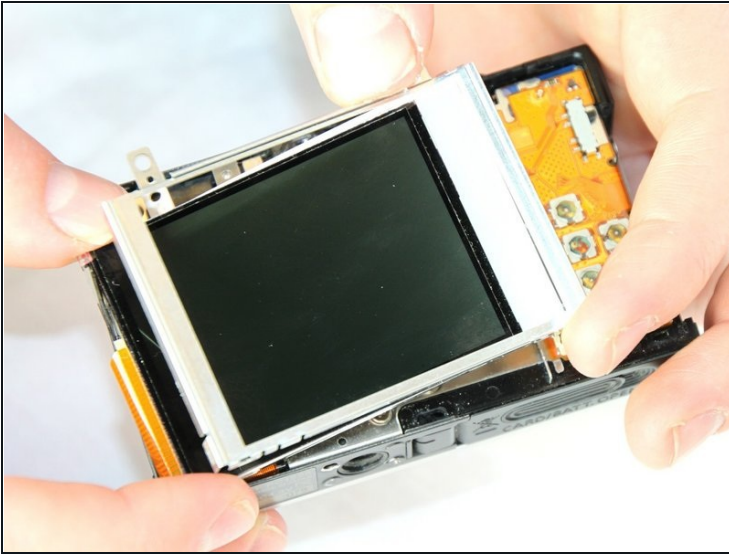
## Step 10



- Push the metal frame away from the metal tab using the spudger to detach the frame.
- Rotate the metal frame upwards.
- ① The metal framing should be attached by a metal tab towards the bottom of the camera, near the function buttons.



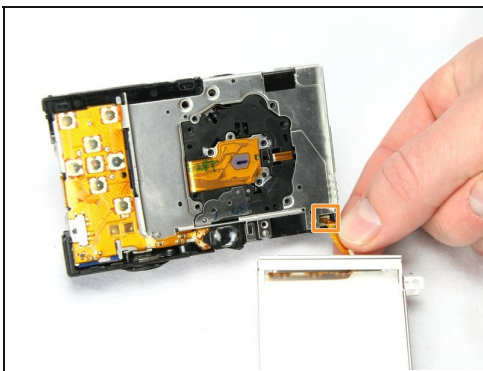
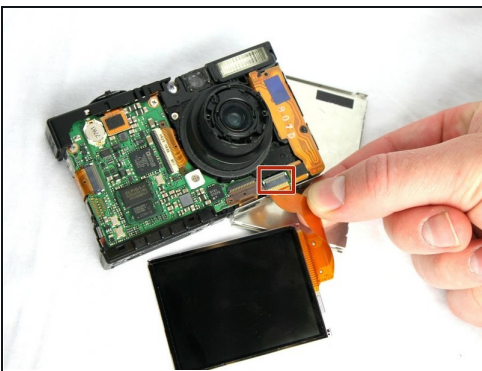
## Step 11



- Carefully lift the metal frame from the camera.
- Remove the black LCD screen, leaving the thin lens pieces in place.

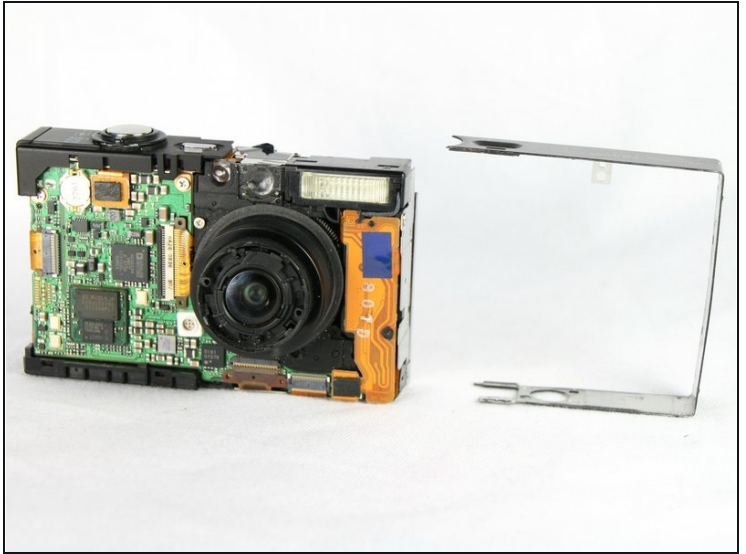
⚠ BE CAREFUL; both components are attached by an orange connector ribbon and cannot be removed yet.

## Step 12



- Carefully pull on the orange connector ribbon to disconnect the LCD screen.
  - The LCD screen can be pulled out of the frame before disconnecting its connector ribbon.
- ① [Tweezers](#) are helpful to disconnect the ribbon.

## Step 13 — Flash Unit



- Slide the metal frame off of the camera on the side that is closest to the flash mechanism.

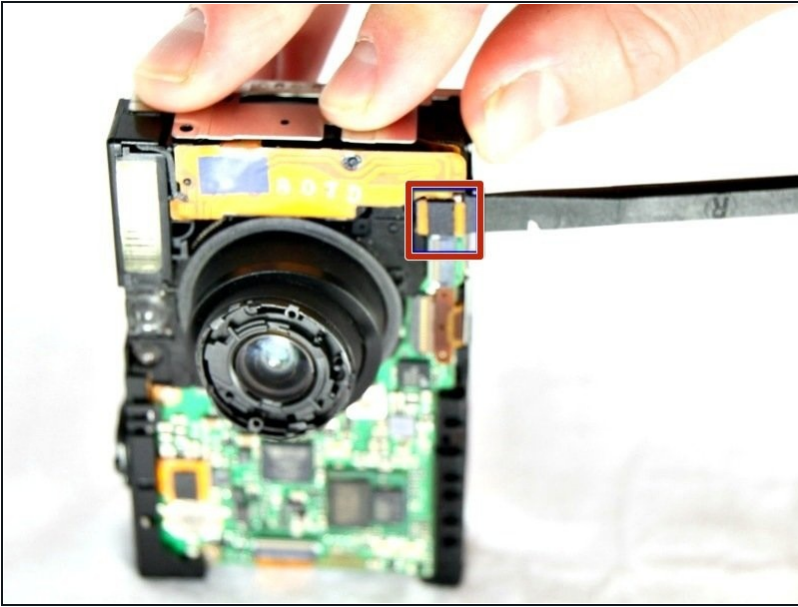
## Step 14



- Use a Phillips #00 screwdriver to remove the 2.4 mm screw that secures the flash assembly.

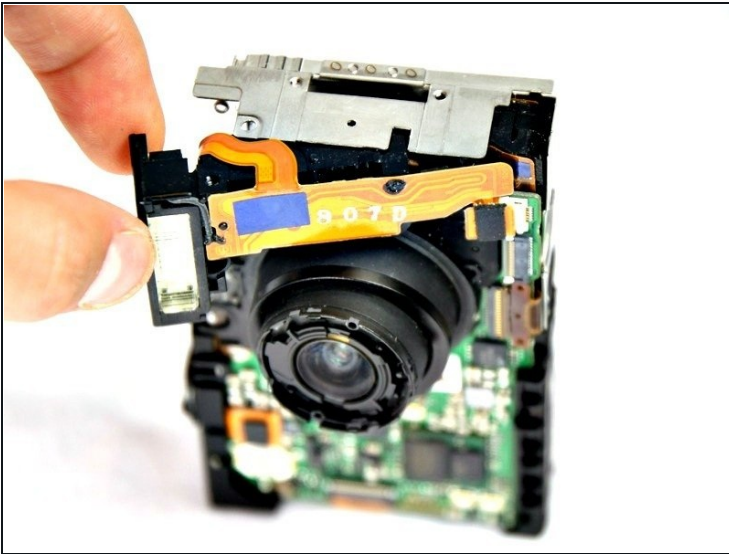


## Step 15



- Use the spudger to gently and carefully disconnect the flash assembly ribbon from the black connector lock.

## Step 16



- Pull the flash assembly forward out of the camera to remove it.

**⚠ BE CAREFUL** when handling the flash assembly. Touching the capacitor (the black cylinder attached to the flash assembly) could shock you.

## Step 17 — Lens



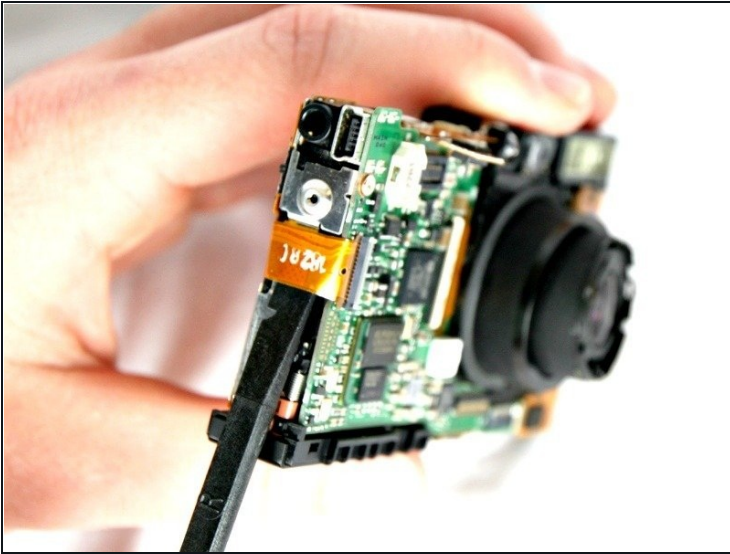
- Remove the 2.90mm screw from the lens, near the motherboard.

## Step 18



- Using the spudger remove the shutter button by prying the small tab on the front side of the camera.

## Step 19



- With a spudger disconnect the orange connector ribbon as shown.
- Disconnect the orange connector ribbon that is located under the now removed shutter button.

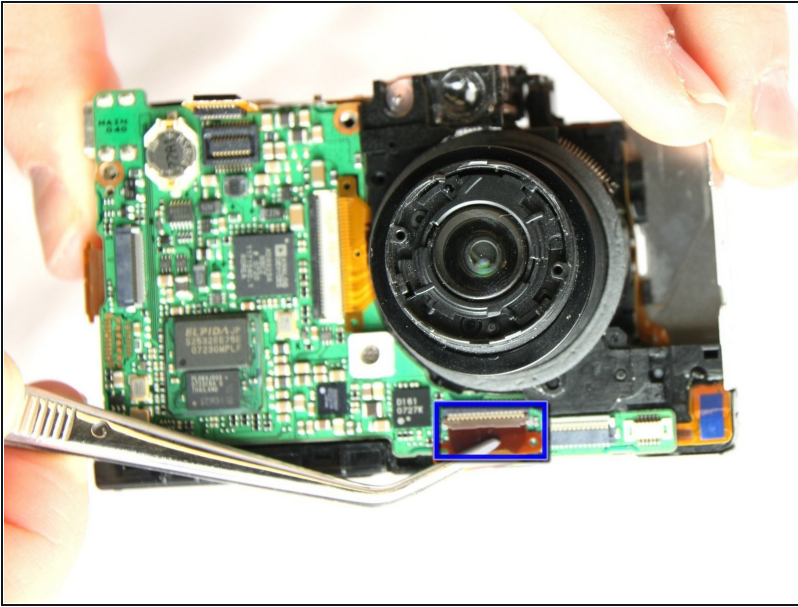
## Step 20



- Remove the two 2.90 mm screws from the motherboard.

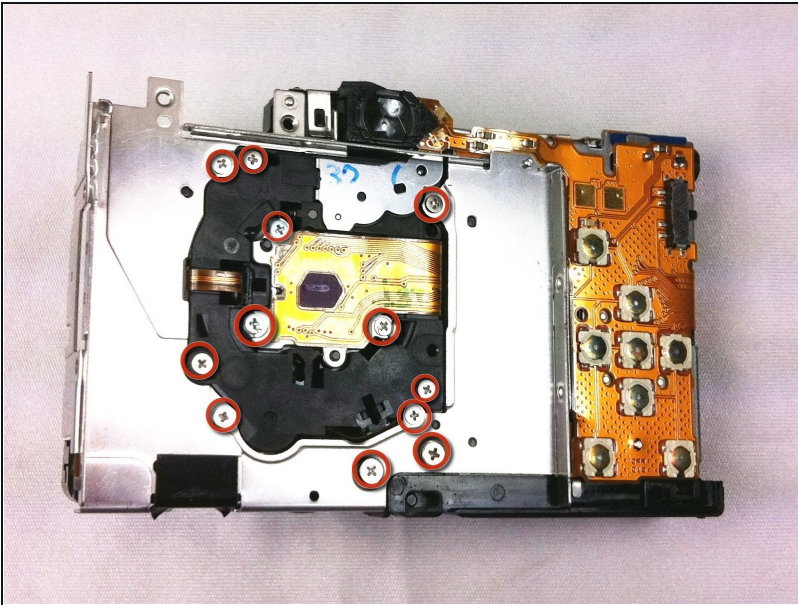


## Step 21



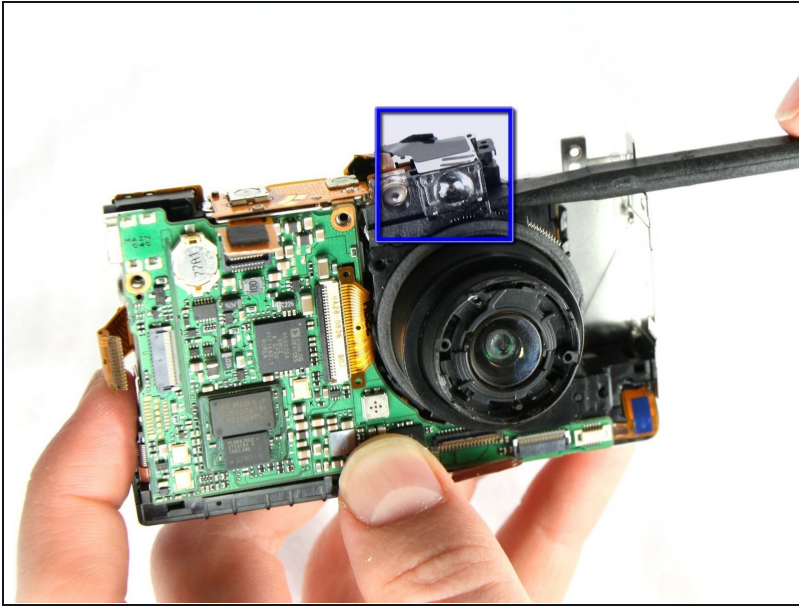
- With [Tweezers](#) detach the bottom orange ribbon.

## Step 22



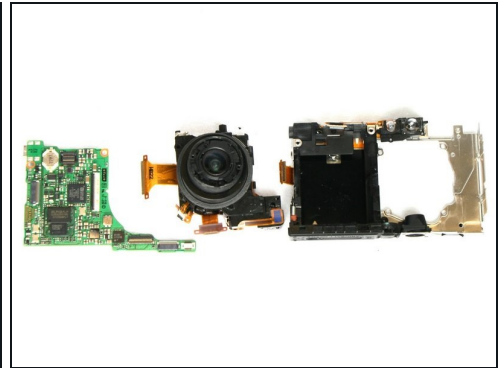
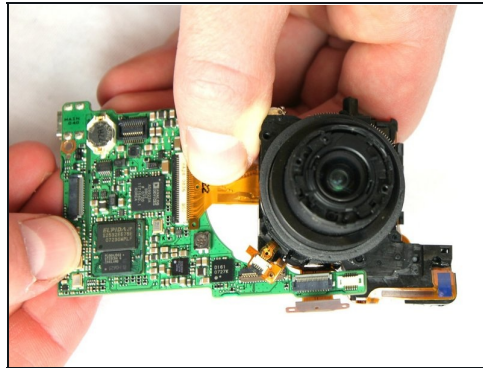
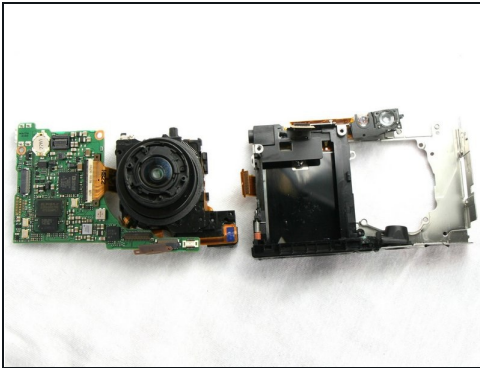
- Remove the screws shown. Start with the outside 6 (3-2.90mm & 3-2.40mm) screws on the metal frame. Then remove the 6 (2.40mm) screws on the back of the lens piece

## Step 23



- With spudger gently remove the Viewfinder Window that is directly above the lens.

## Step 24



- Detach the mother board with lens from body of camera.
- Carefully remove the lens from the motherboard. Use tweezers to remove any of the 4 connecting ribbons from the lens.
- Your lens has been removed from the motherboard and bottom framing.

---

To reassemble your device, follow these instructions in reverse order.