



ACER Aspire E1-572-6870 Keyboard Replacement

Replacing keyboard in ACER Aspire E1-572-6870.

Written By: Cody Lim



INTRODUCTION

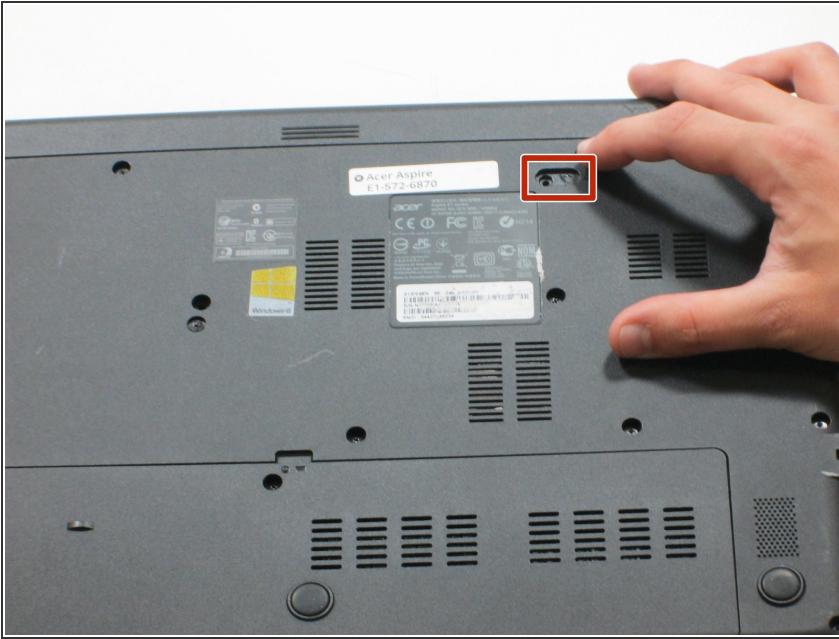
This guide will show you how to properly remove the keyboard.



TOOLS:

- [Phillips #0 Screwdriver](#) (1)
 - [Plastic Opening Tool](#) (1)
-

Step 1 — Battery



- ❗ Before you begin, be sure to turn off your laptop and unplug it from the outlet.
- Flip your laptop over so the back panel is facing upwards.
- Locate the lock switch below the battery.

Step 2



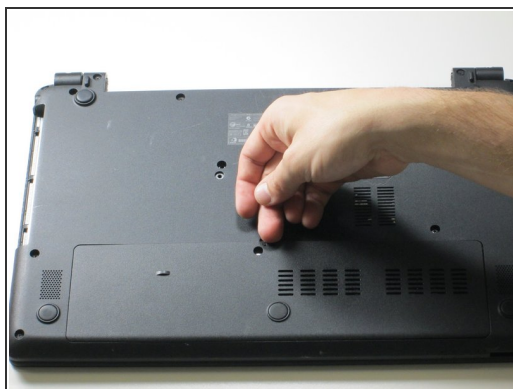
- Slide the lock switch to the right using your finger or a spudger.
 - At the same time, grasp the battery with your other hand and slide it out of the laptop.
 - Remove the battery.
- 🔑 To reinsert or replace the battery, simply line up the tabs on the battery with the laptop and slide it straight back in. There is no need to move the lock switch.

Step 3 — Back Panel



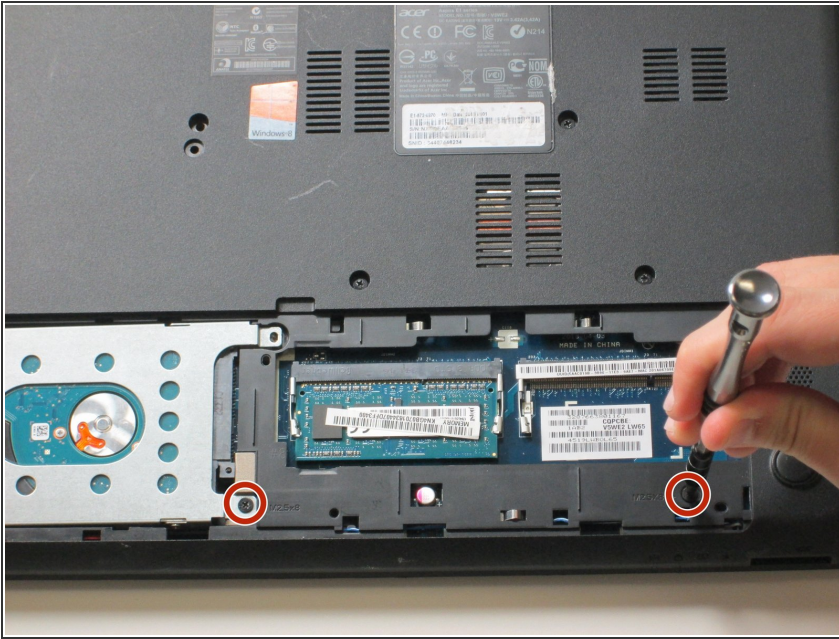
- Remove the 16 2.5 x 8mm Phillips #0 screws from the back panel.

Step 4



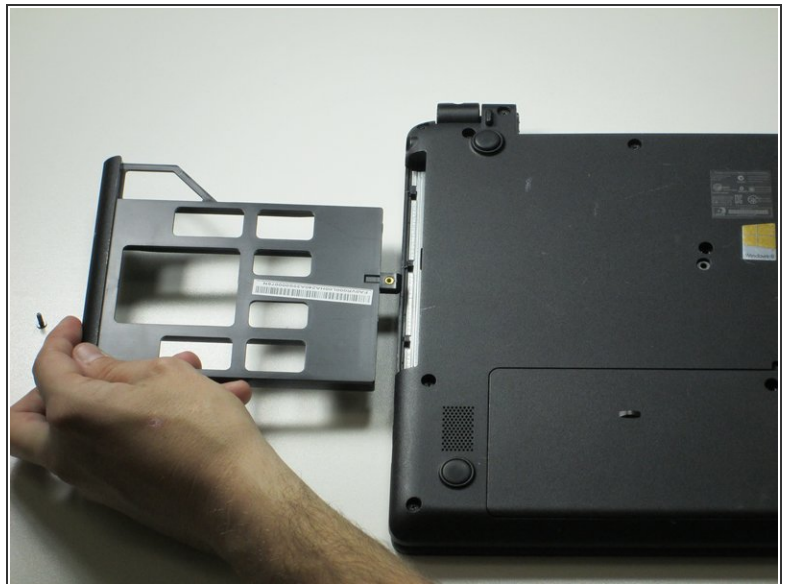
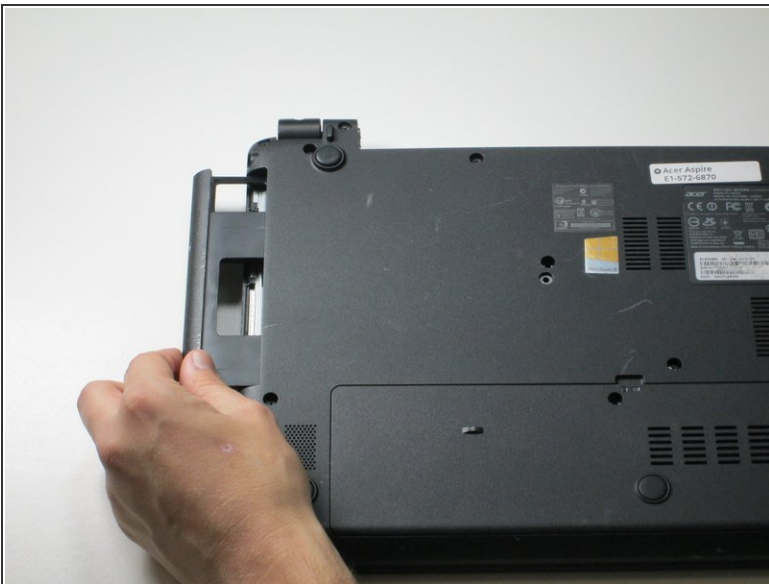
- Remove the back panel by carefully disengaging it around the edges and then pull upwards.

Step 5



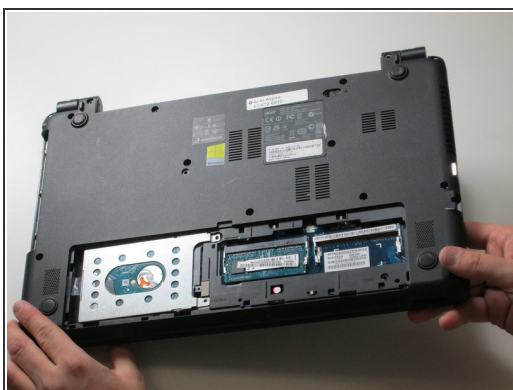
- Unscrew the two remaining 2.5 x 8mm Phillips #0 screws from inside the bottom panel as designated in the image.

Step 6



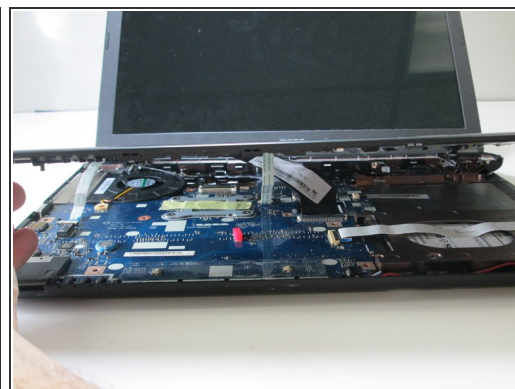
- Slide out the plastic insert located on the left side, and remove, before returning the laptop to the face-up position.

Step 7



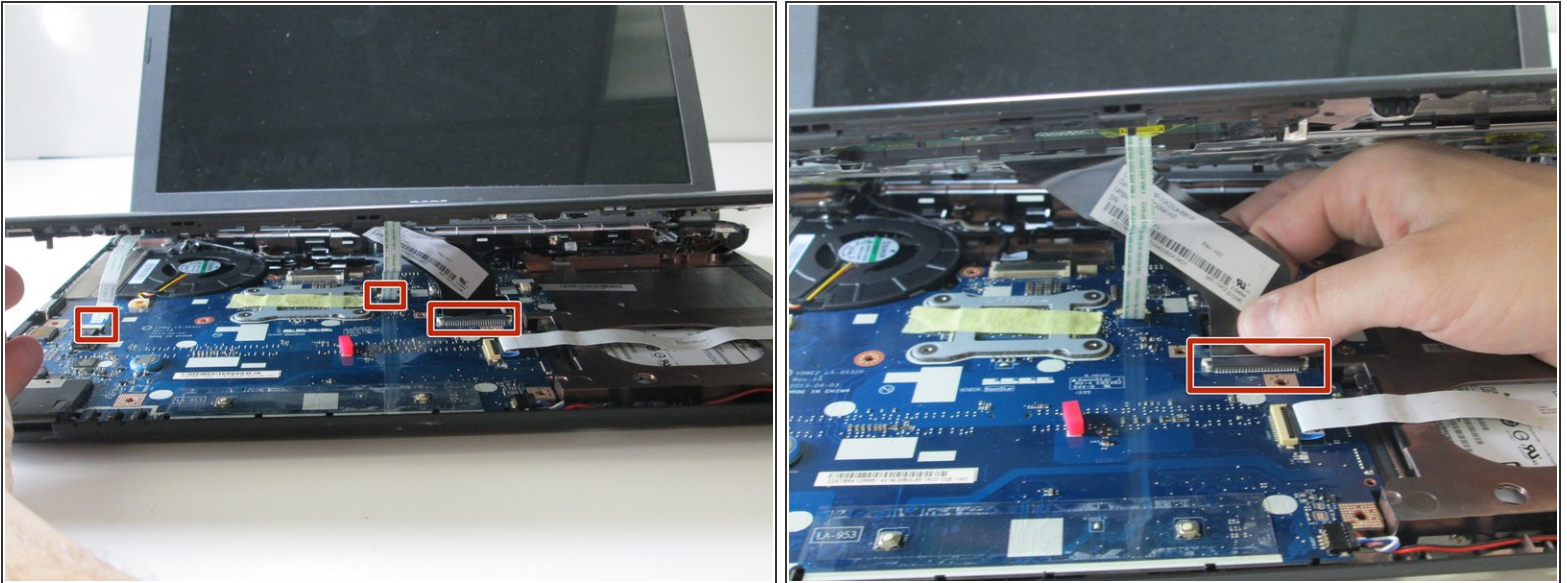
- Carefully flip your laptop back over and open it up.

Step 8



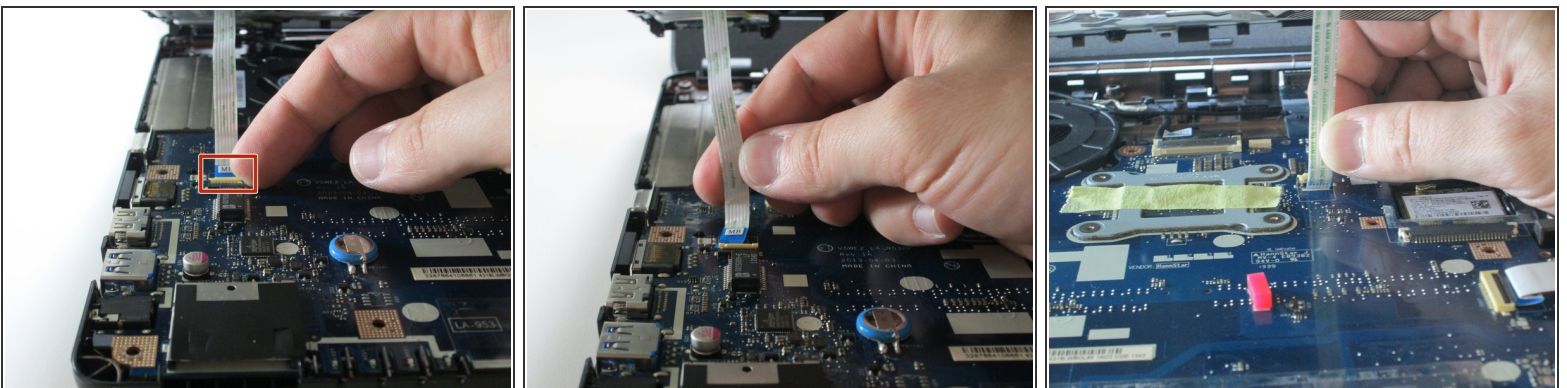
- ⓘ Carefully detach the top panel of the laptop and slowly lift it up to reveal the internal components.

Step 9



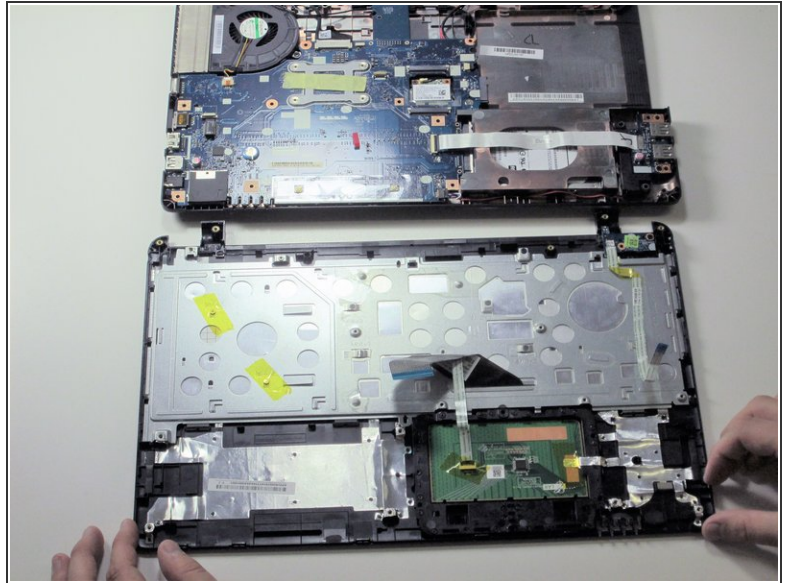
- Locate the three ribbons that need to be unplugged, so the two halves of the device may be separated.
- Unplug the large ribbon by sliding the retainer clip backward (toward the hinges), then gently pulling the cable out of the connector.

Step 10



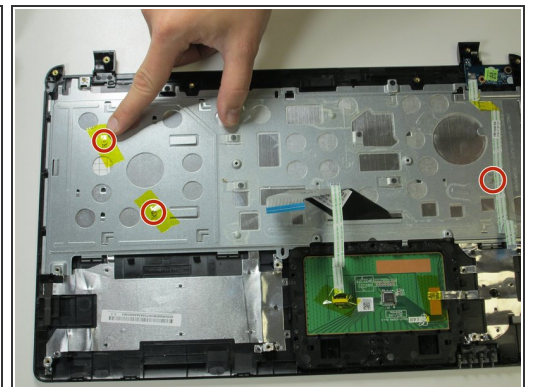
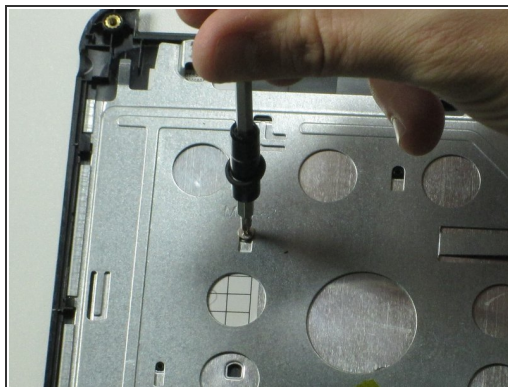
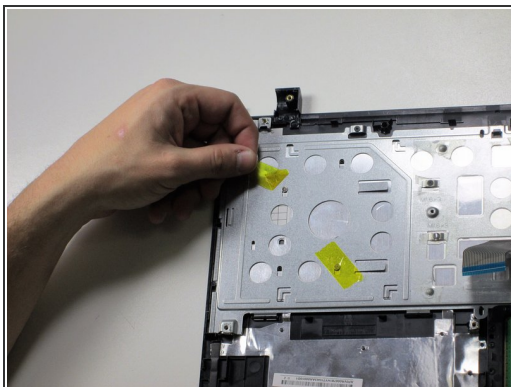
- Remove the other two smaller ribbons by flipping open the small plastic tab that holds the ribbon in the connector.
- Then simply pull the free ribbon out.

Step 11



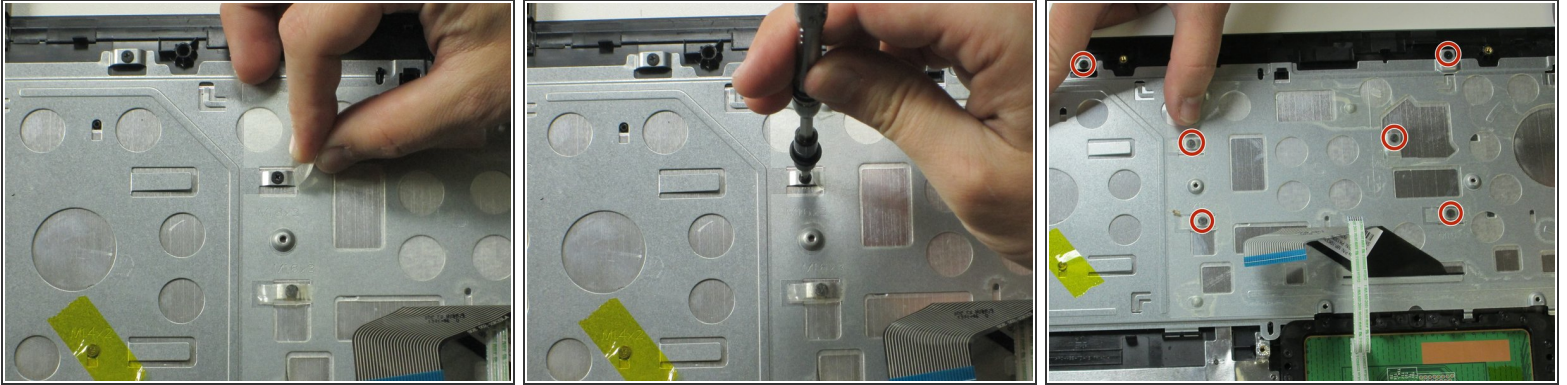
- Lift the top panel all the way up and your laptop is now split into its two distinct halves.

Step 12 — Keyboard



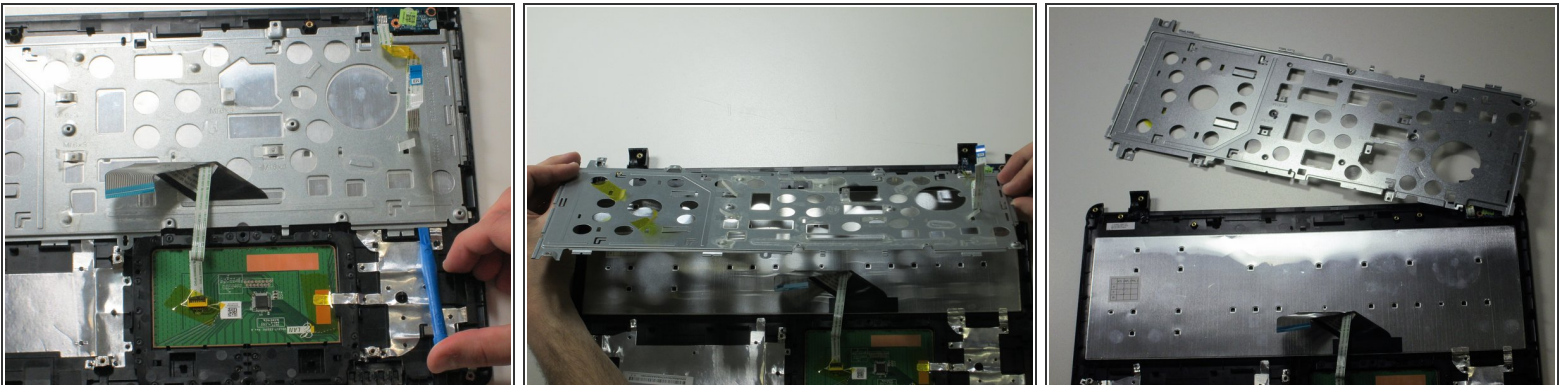
- Separate the top panel from the rest of the laptop.
- Remove the yellow tape and then remove the three 1.4 x 2 mm Phillips #00 screws with a Phillips #00 screwdriver.

Step 13



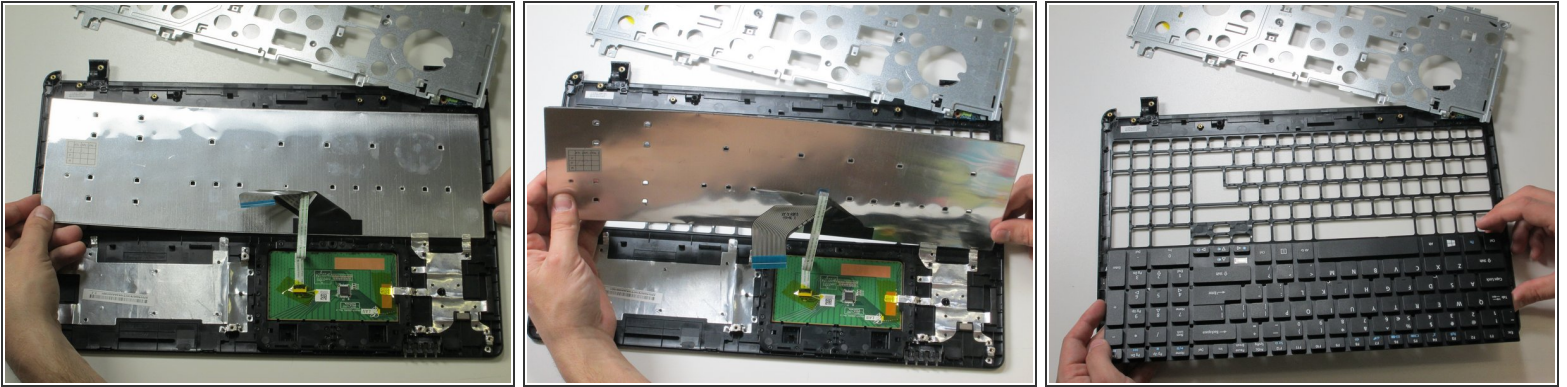
- Remove the clear tape and then, remove the six 1.6 x 3 mm Phillips #0 screws with a Phillips #0 screwdriver.

Step 14



- Once the screws have all been removed, use a plastic opening tool to slide the metal panel upward on both sides to disengage the metal tabs.
- Flip the metal panel out once this is done.

Step 15



- Flip panel towards you to take out keyboard.

To reassemble your device, follow these instructions in reverse order.