



Samsung HD Pro Heatsink Replacement

This guide will show you how to replace the motherboard in the Samsung SmartCam HD Pro.

Written By: AllisonBridges





TOOLS:

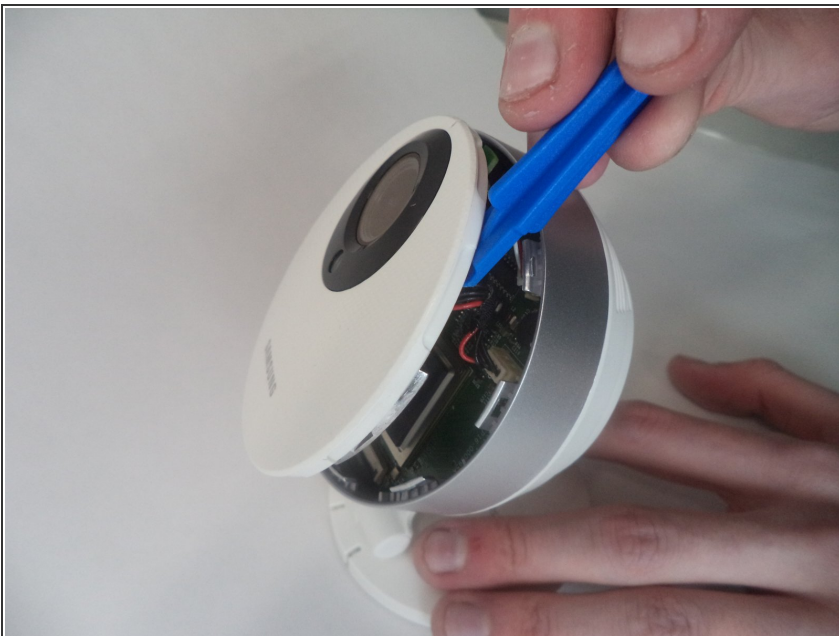
- [iFixit Opening Tools](#) (1)
 - [Phillips #00 Screwdriver](#) (1)
-

Step 1 — Casing



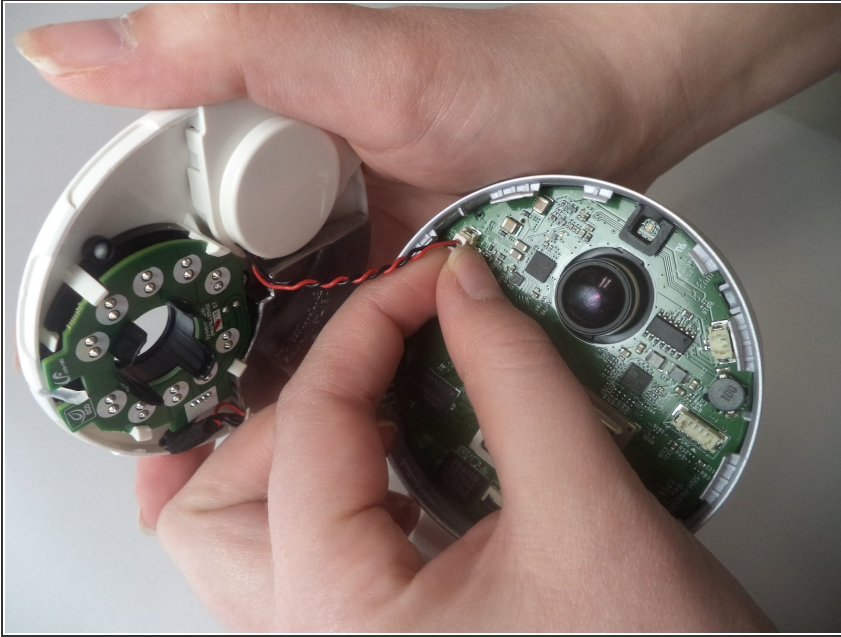
- Locate a small opening around the front panel of the camera.

Step 2



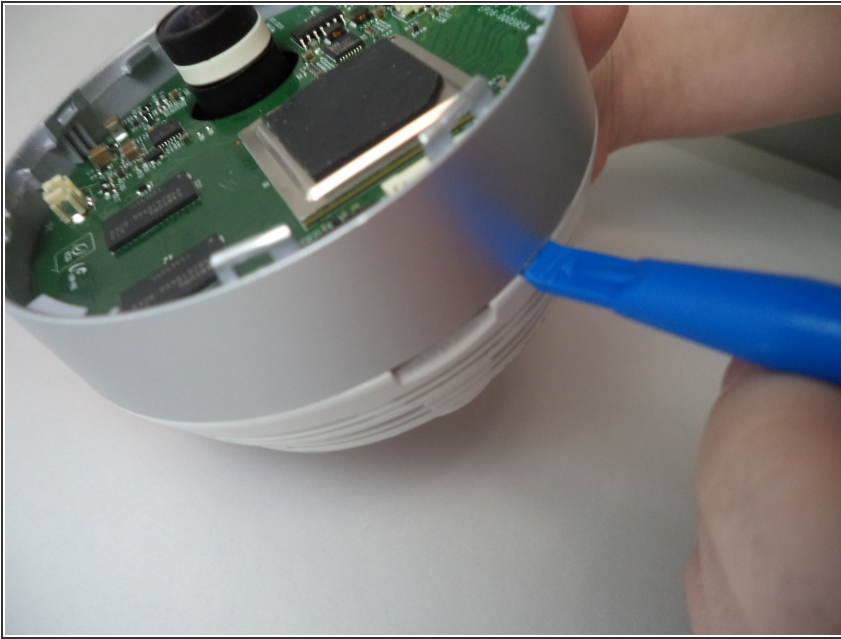
- Using a plastic opening tool, apply pressure to various points around the camera to pry open the front panel.

Step 3



- Remove both of the connecting wires from the motherboard.
- Be careful to not bend headers or damage the wires.

Step 4



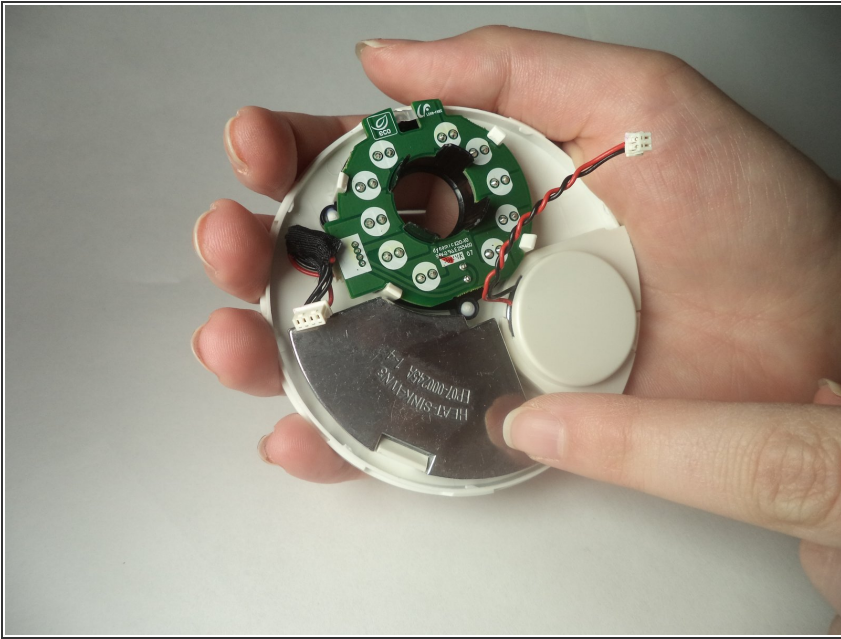
- Apply a plastic opening tool to the gray plastic band around the case of the camera. Insert the edge of the spudger between the case of the camera and the gray plastic band.

Step 5



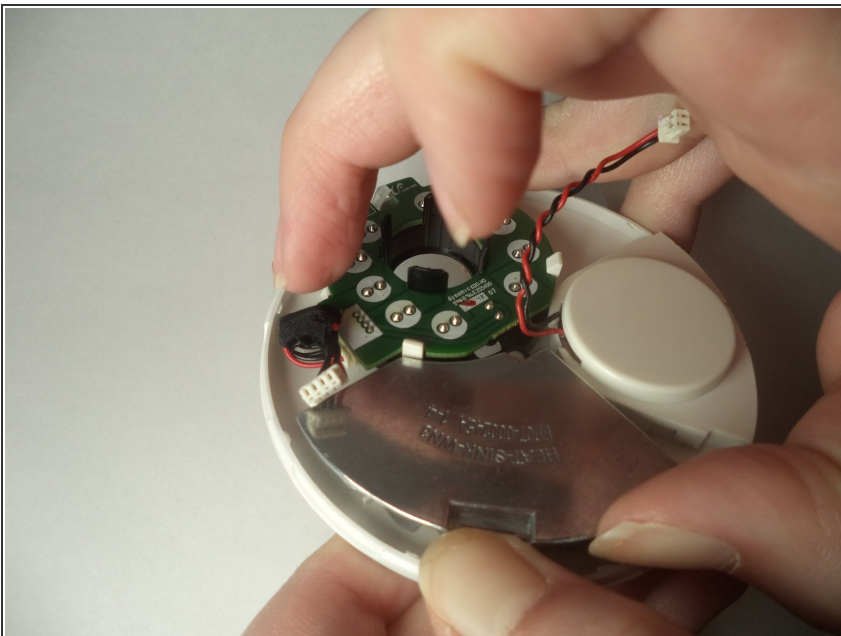
- Apply pressure with the plastic opening tool to various areas of the gray plastic band to pry it from the white plastic back of the case.

Step 6 — Heatsink



- On inside of front casing, locate heatsink.

Step 7



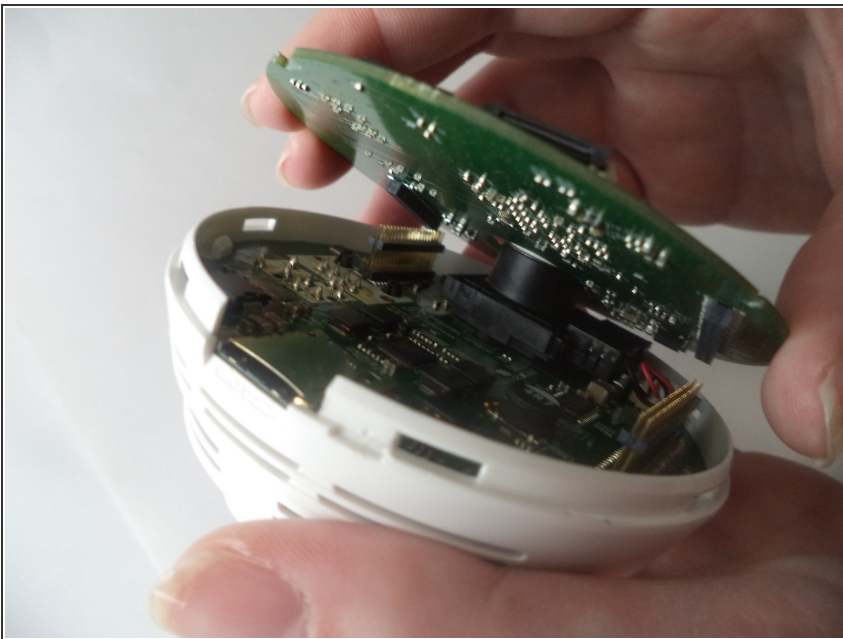
- Using careful force, push in the white tab and pry up heatsink with fingers.

Step 8



- Check to make sure all wires are completely detached from the motherboard.

Step 9



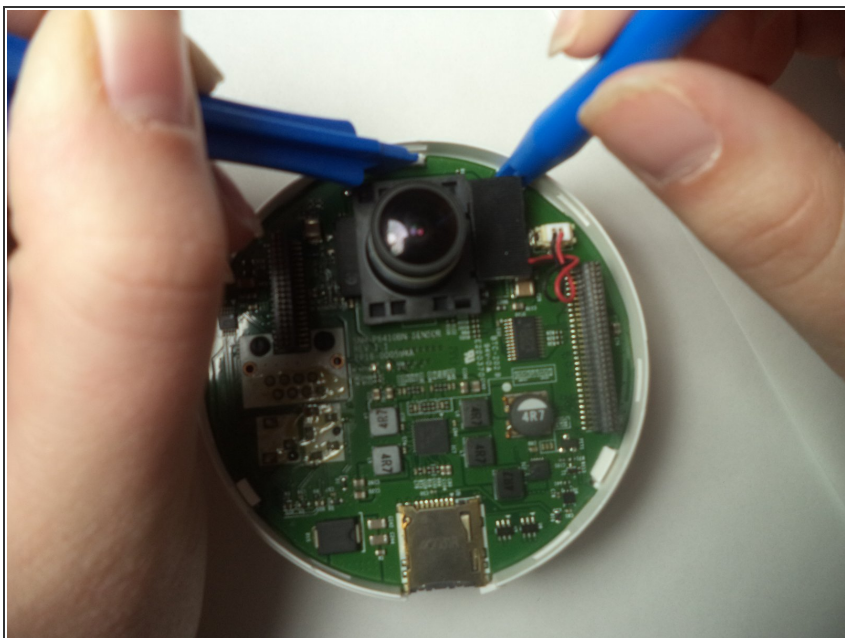
- Pull the circular circuit board away from the rest of the device, being careful not to bend any of the pins connecting the two.

Step 10



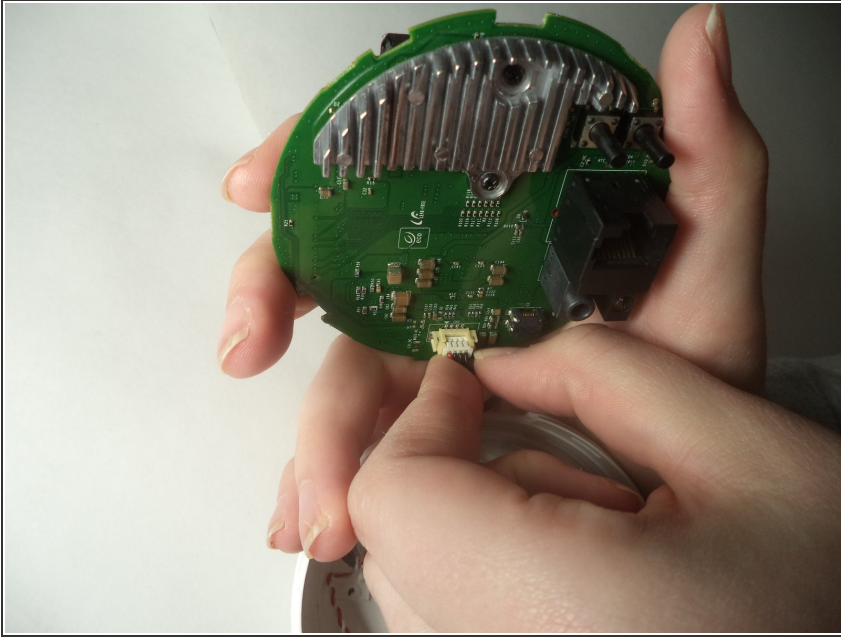
- Locate the three white tabs holding the next circuit board inside the case.

Step 11



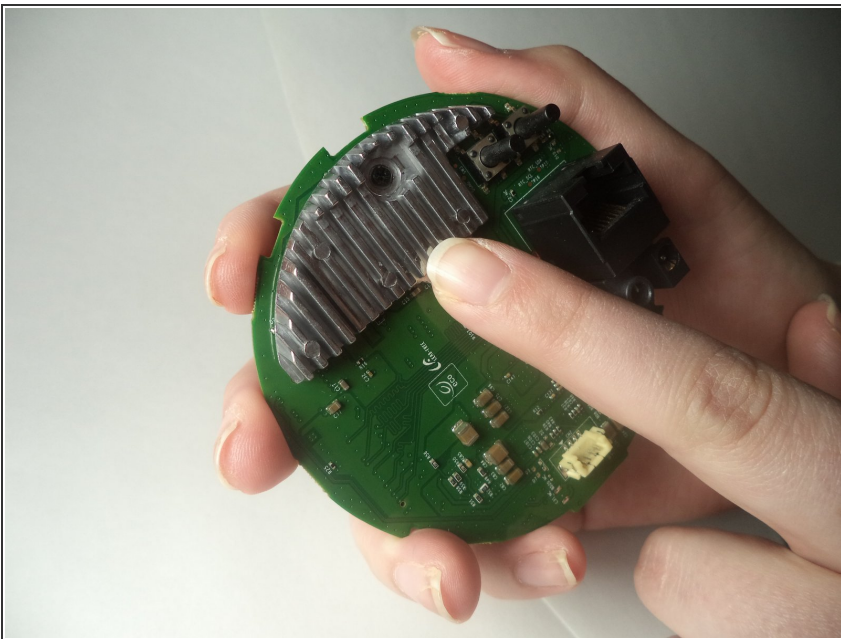
- Press each tab while using a plastic spudger to pry the motherboard up in the location near the tab.

Step 12



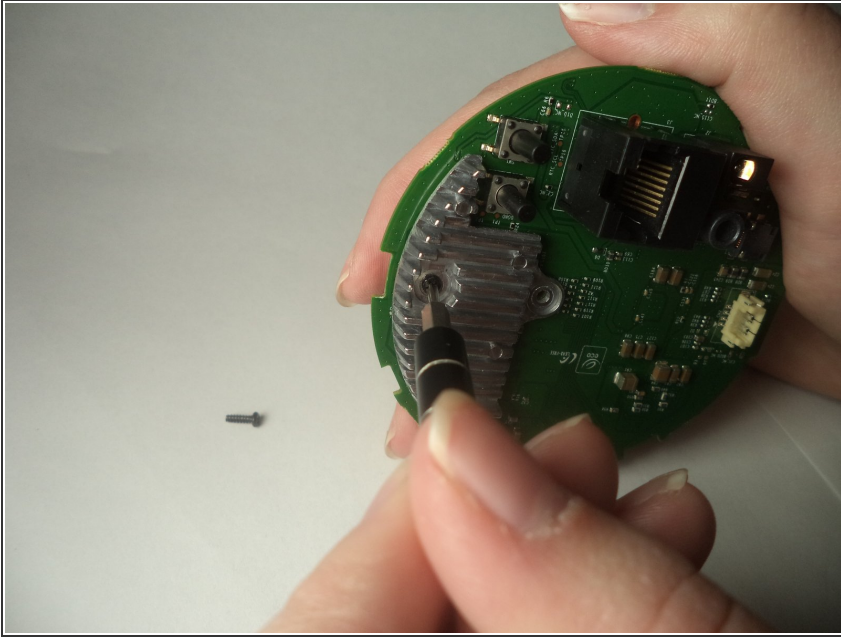
- Unplug the final group of wires from the bottom of the second circuit board and remove the board.

Step 13



- On reverse side of second circuit board, locate secondary heatsink.

Step 14



- Using a Phillips #00 screwdriver, remove the screws holding the heatsink to the motherboard.

To reassemble your device, follow these instructions in reverse order.