



# Sansa e260R Battery Replacement

Written By: Casey Smith





## TOOLS:

- [Phillips #00 Screwdriver](#) (1)
- [iFixit Opening Tools](#) (1)



## PARTS:

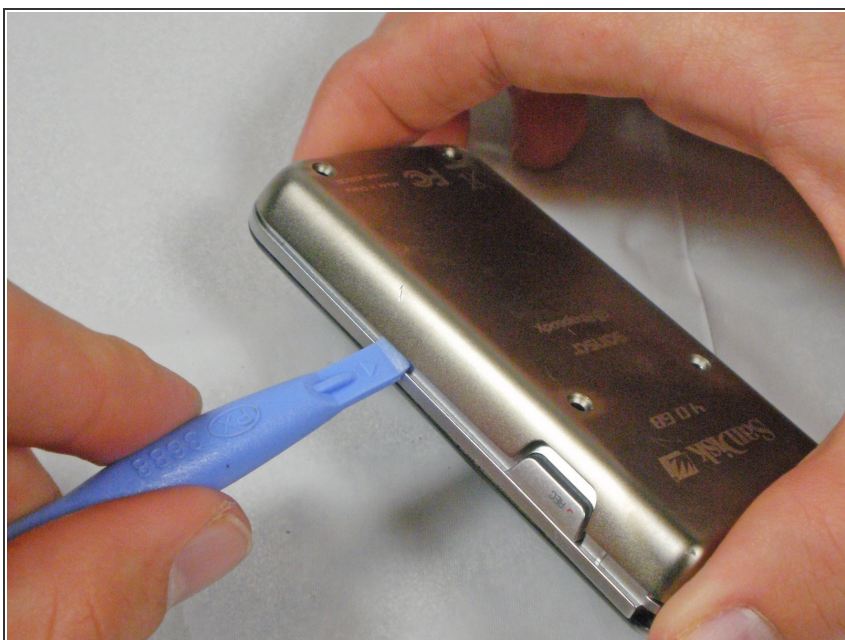
- [Sansa e260R Replacement battery](#) (1)

## Step 1 — Rear Case



- ❗ Before disassembling the device, make sure it is powered off.
- Remove the four 1.5mm screws on the back of the device.

## Step 2



- Using a plastic opening tool, lift the metal backing from the front of the device.



## Step 3



- Pull the rear panel off of the Sansa e260R.

## Step 4 — Battery



- Grip the bottom of the battery with your thumb and forefinger and pull it away from the device.

To reassemble your device, follow these instructions in reverse order.