



# Traxxas Summit Steering Assembly Servo Replacement

This guide will inform a user on the process of replacing a servo in their Traxxas Summit's steering assembly.

Written By: Carson J. Bailey



# INTRODUCTION

In the event that a Traxxxas Summit begins to steer erratically, the user may need to replace one, or both, of the servos which power the device's steering assembly. This process is relatively quick, and does not require any special tools outside of a standard set of hex keys. This guide will detail the process step-by-step, teaching the user how to remove the old servo and replace it with a new one, which is readily available online.



## TOOLS:

- [2mm Hex Key](#) (1)
- [2.5 mm Hex Key](#) (1)
- [3mm Hex Key \(or Bit\)](#) (1)
- [64 Bit Driver Kit](#) (1)

*This kit contains all the bits you need for this fix, but as long as you have the other tools you don't have to have it!*



## PARTS:

- [Traxxas 2075 steering servo](#) (1)



## Step 1 — Steering Assembly Servo Replacement



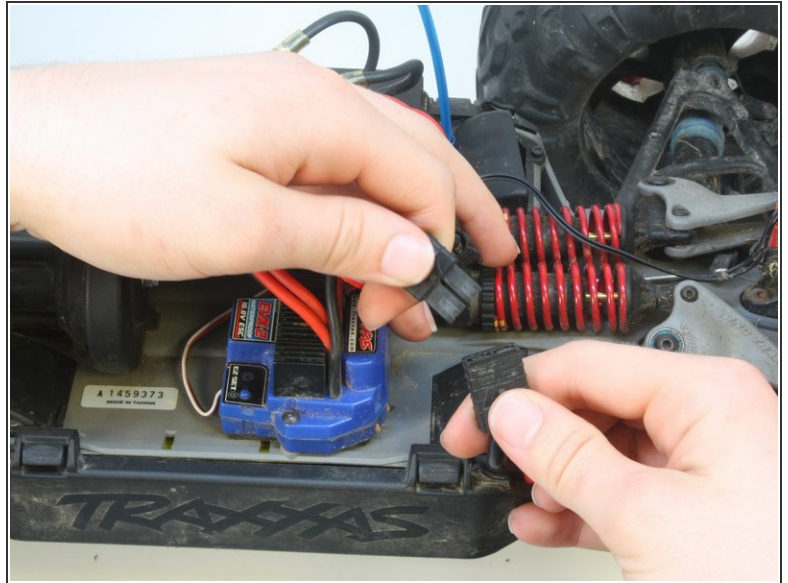
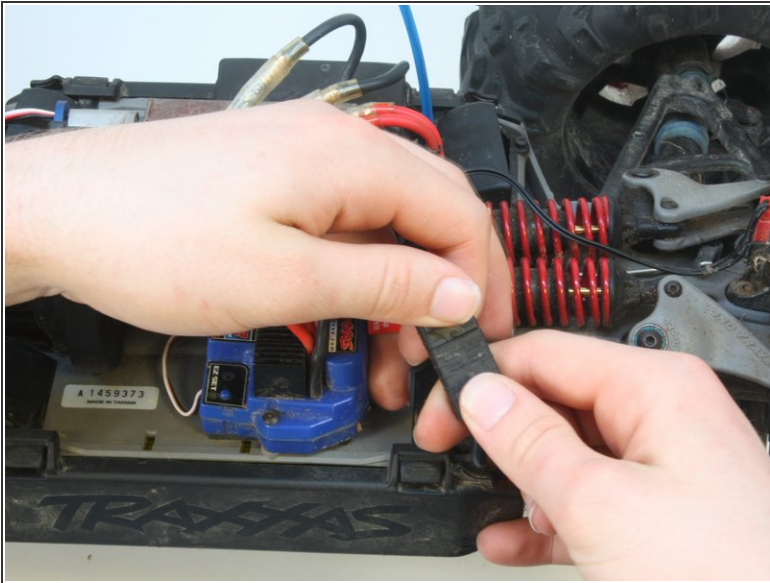
- Remove each of the four pins that hold the shell by pulling them from the posts.

## Step 2



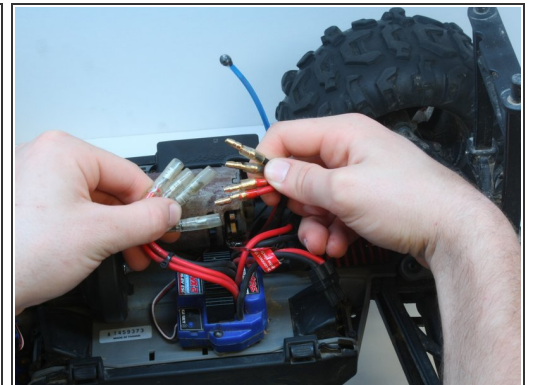
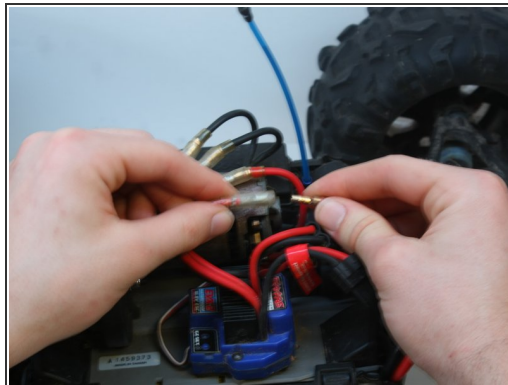
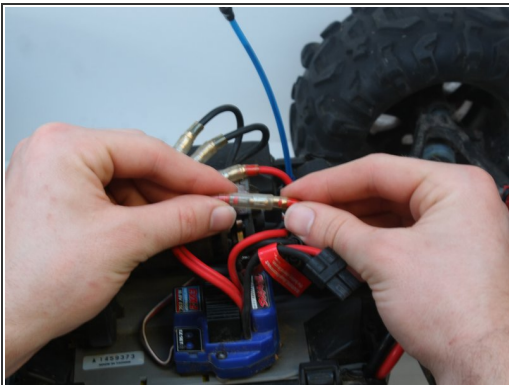
- Remove the shell by grabbing it with both hands and lifting upwards.

### Step 3



- Disconnect the battery from the device by pulling the black plastic connector apart.

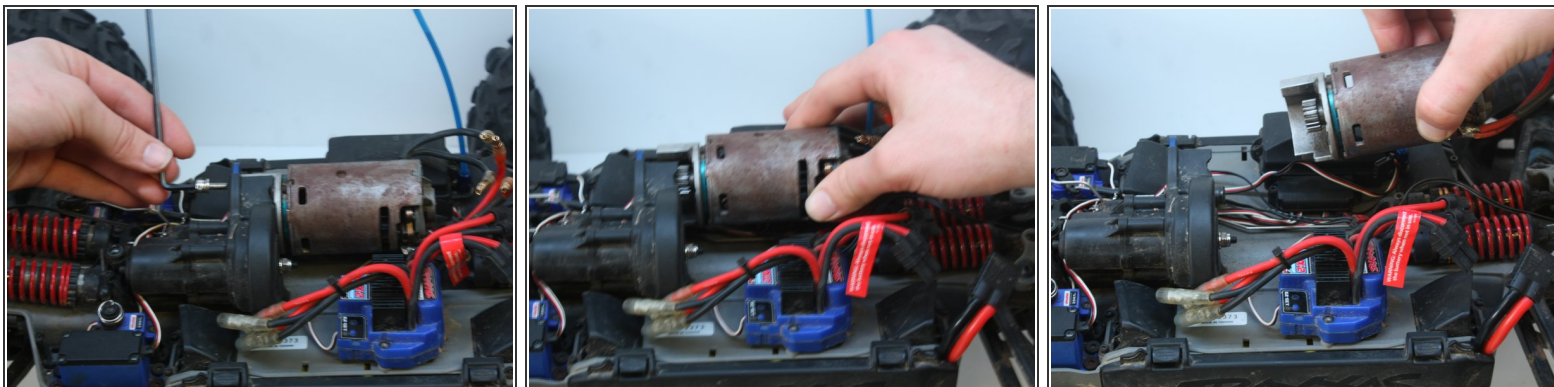
### Step 4



- Disconnect the four power cables that connect the motor to the electronic speed control.
  - Grab the connectors by their rubber covered metal ends rather than the wire if possible.

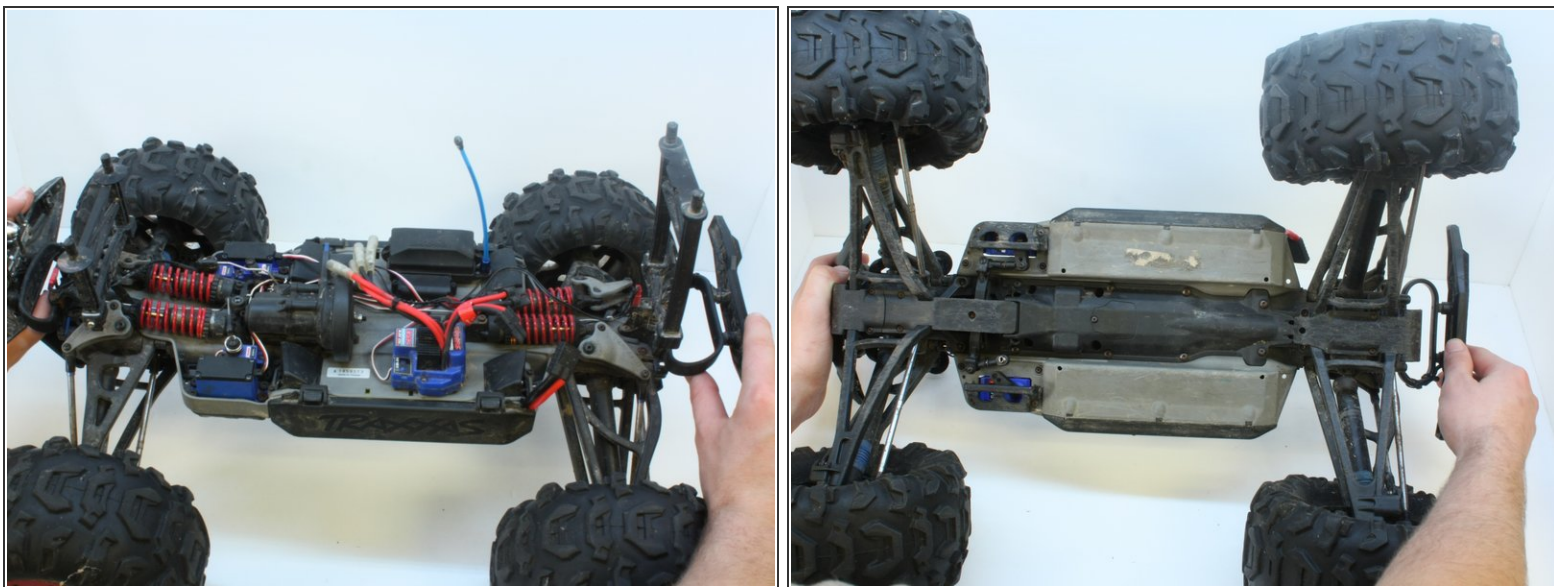


## Step 5



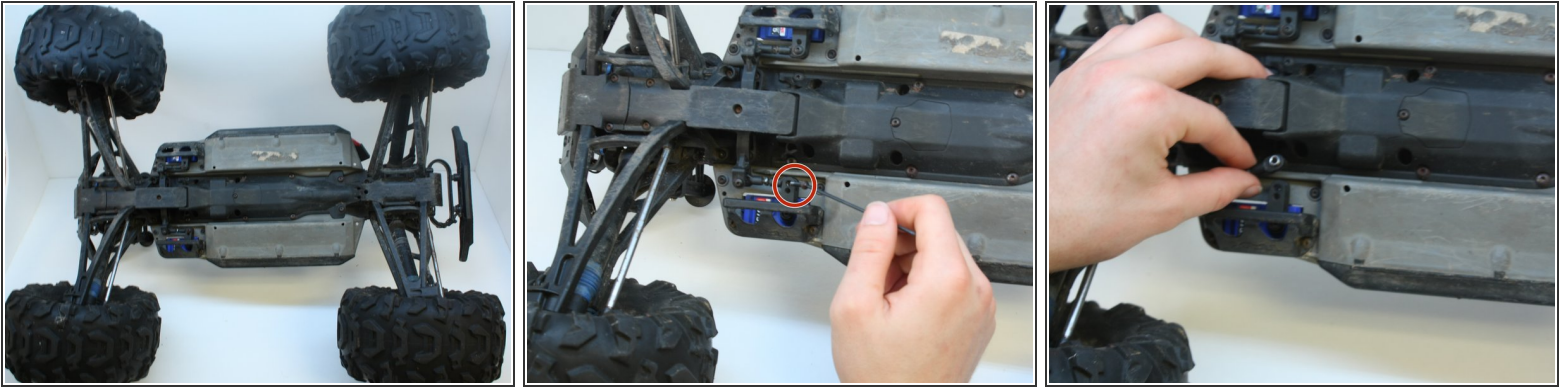
- Unscrew the single 15.5mm long retaining bolt from the motor with the 3mm hex key.
- Remove the motor by wiggling back and forth while pulling it to the right and up.

## Step 6



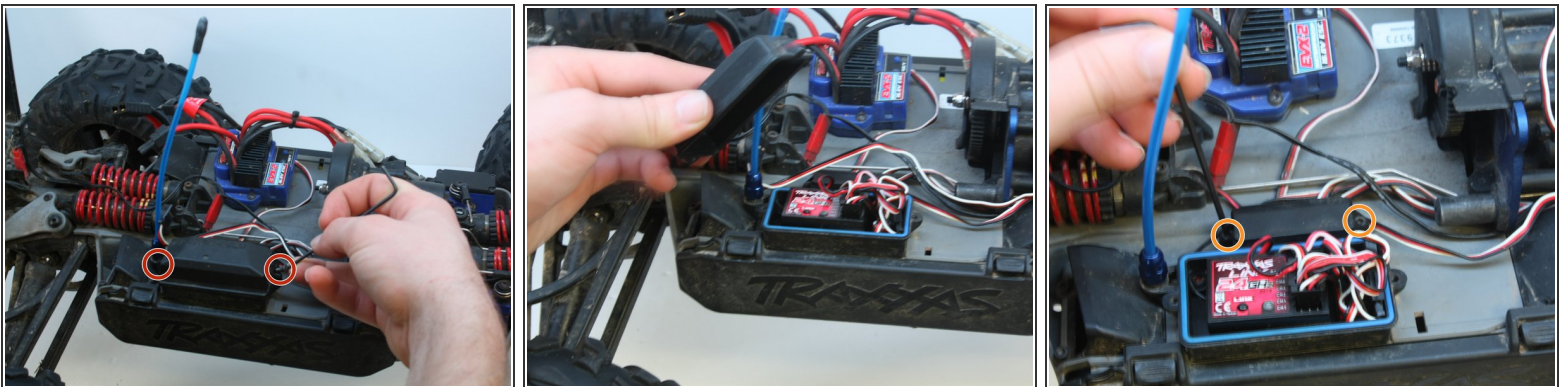
- Flip the car on its back to provide access to the steering assembly.

## Step 7



- Unscrew the servo arm from the steering assembly by removing the 16.3mm long screw with a 2mm hex key.
- Pull the connecting linkage out of the steering horn.

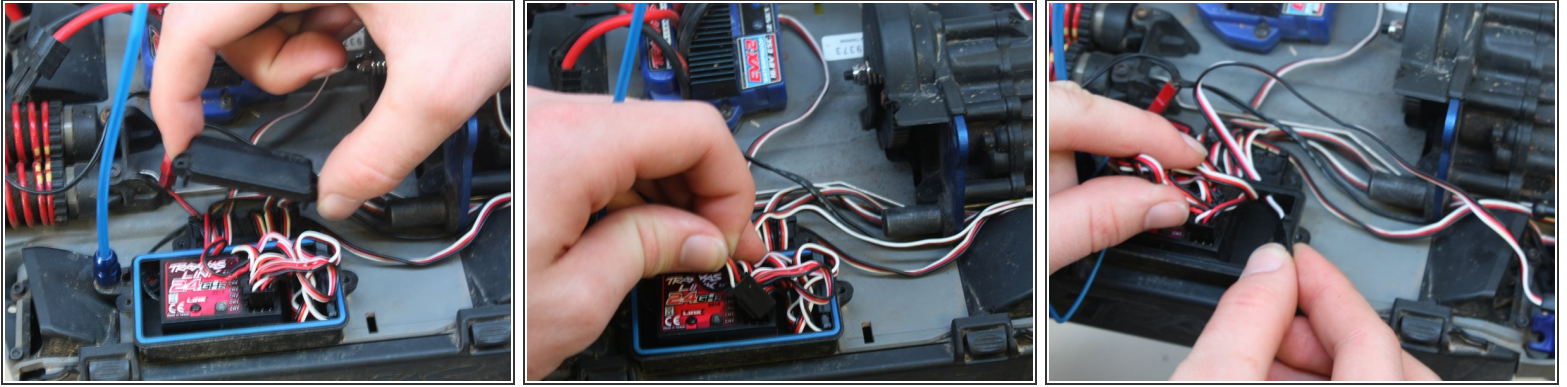
## Step 8



- Flip the car back upright.
- Remove the two 7mm long screws retaining the largest wiring cover with the 2mm hex key.
- Take the largest wiring cover off.
- Remove the two 7mm long screws retaining the smaller wiring cover with the 2mm hex key.



## Step 9



- Remove the second wiring cover.
- Pull the servo connector out of the receiver.
- Work the cable out of the receiver box.

## Step 10



- Remove the four 9mm long screws that retain the faulty steering servo with the 2.5mm hex key.
- Pull the servo out.
  - Turning the servo horn by hand may be necessary to fit it through the hole.

To reassemble your device, follow these instructions in reverse order.