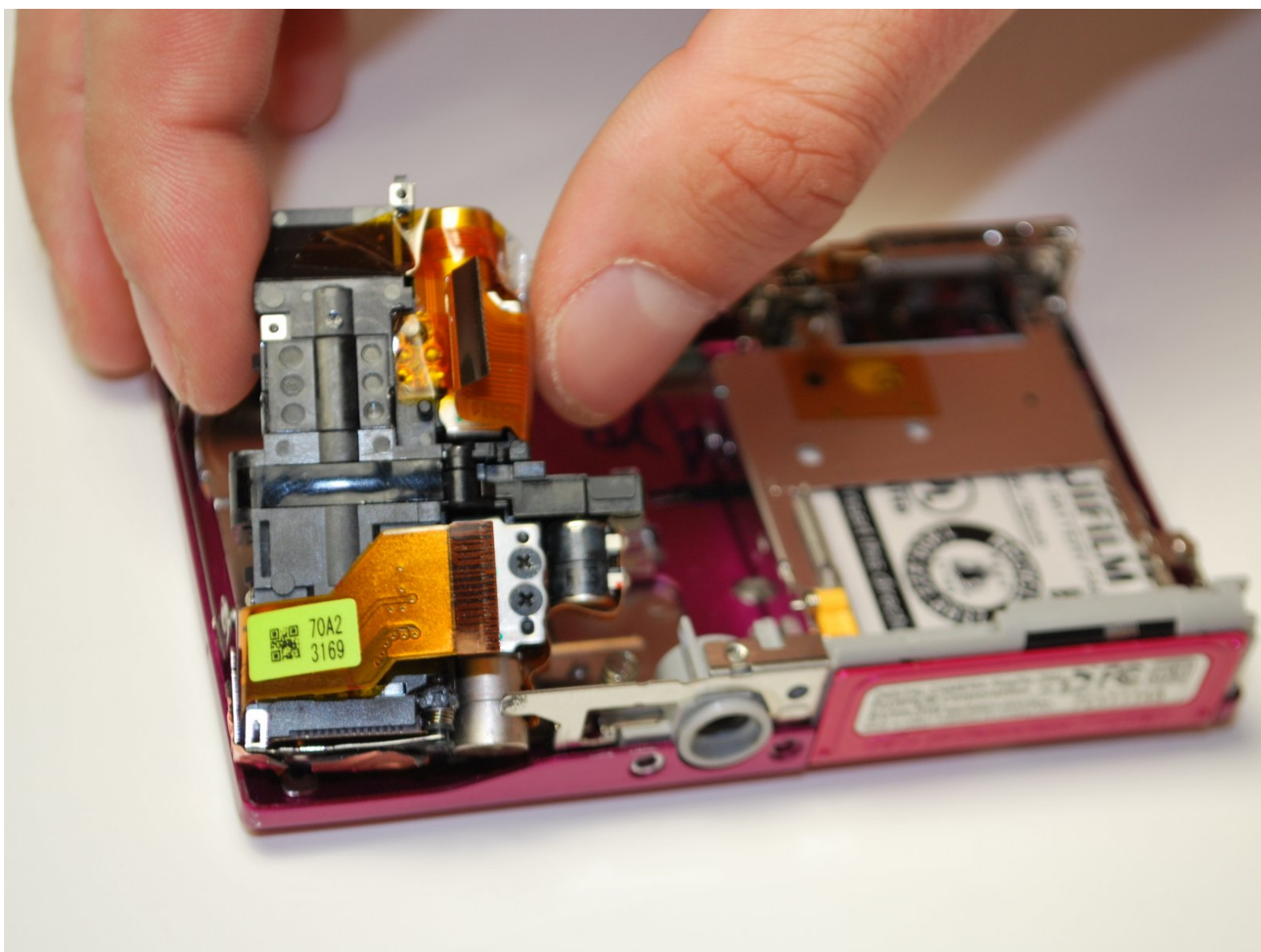




Fujifilm FinePix Z5 Optical Lens Replacement

This guide provides clear images and step-by-step instructions to disassemble the camera and access all issue sites for installation of new parts, specifically to replace the optical lens.

Written By: Inga Direktorchuk



INTRODUCTION

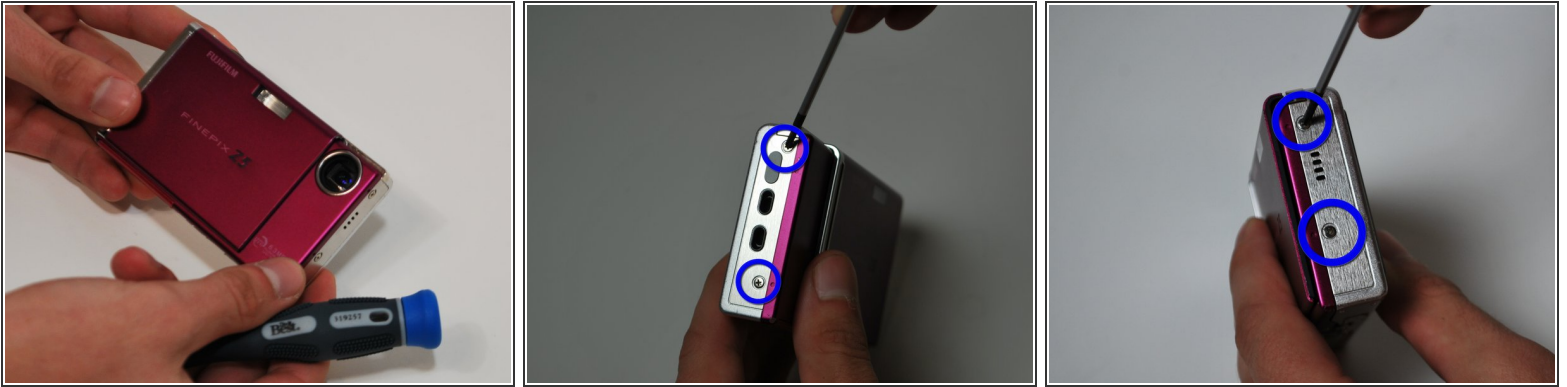
The optical lens is frequently reported as 'not working' or broken. This guide will take you through the steps of removing the malfunctioning lens and installing a new one.



TOOLS:

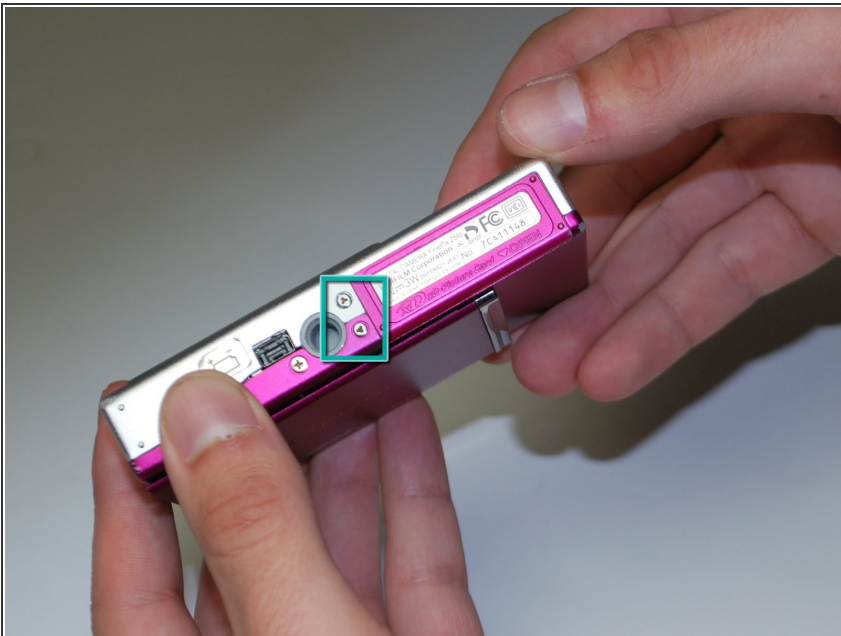
- [Phillips #00 Screwdriver](#) (1)
 - [iFixit Opening Tools](#) (1)
 - [Tri-wing Screwdriver](#) (1)
-

Step 1 — Optical Lens



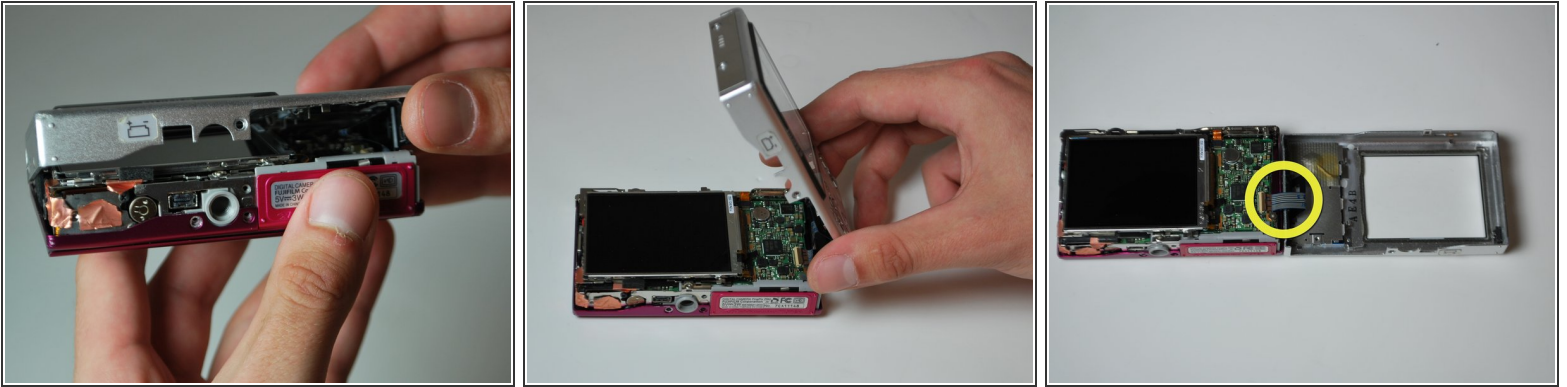
- Remove the two screws from the right side of the camera and the two screws from the left side.
- ⓘ Use a small #00 Phillips flat head screwdriver.
- ☑ Keep all the screws in a container and the two different types separate.

Step 2



- Remove the three screws from the bottom of the camera.
- Use a three-prong screwdriver for two of the three screws; keep these screws separate.

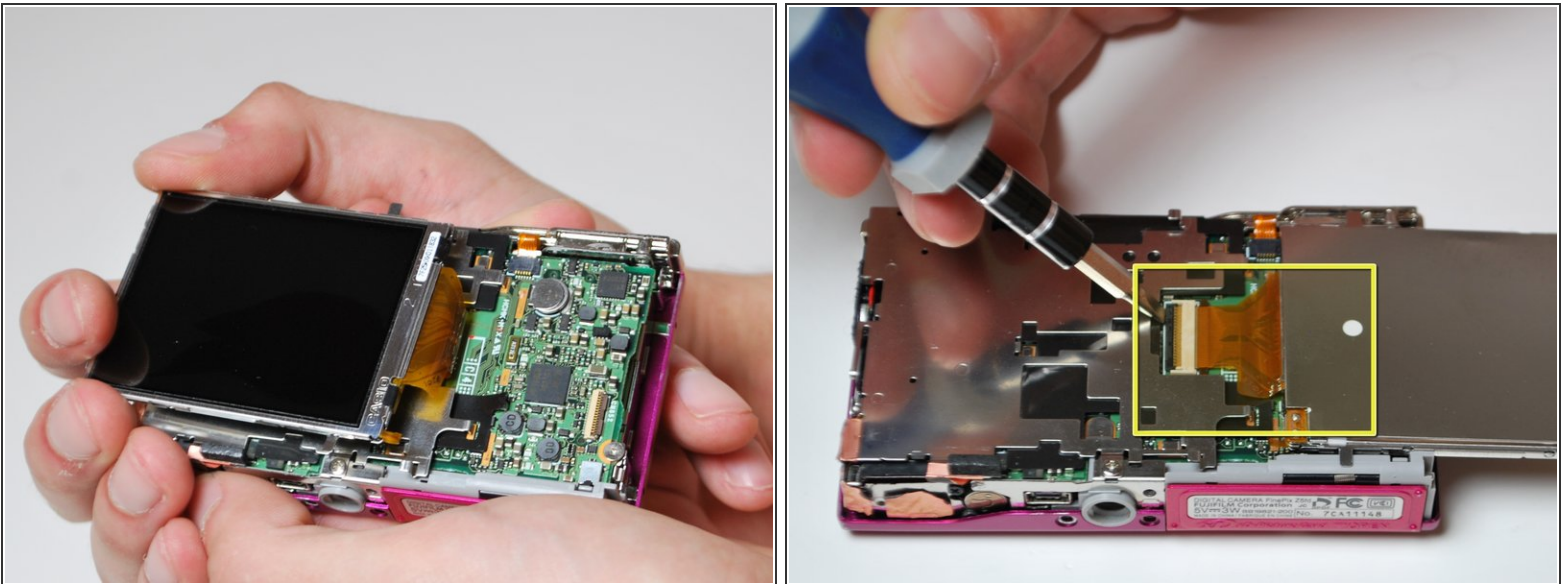
Step 3



- Remove the back by carefully flipping it open to the right side.

⚠ There will be a ribbon cable attaching the front panel to the motherboard, be sure not to tear this.

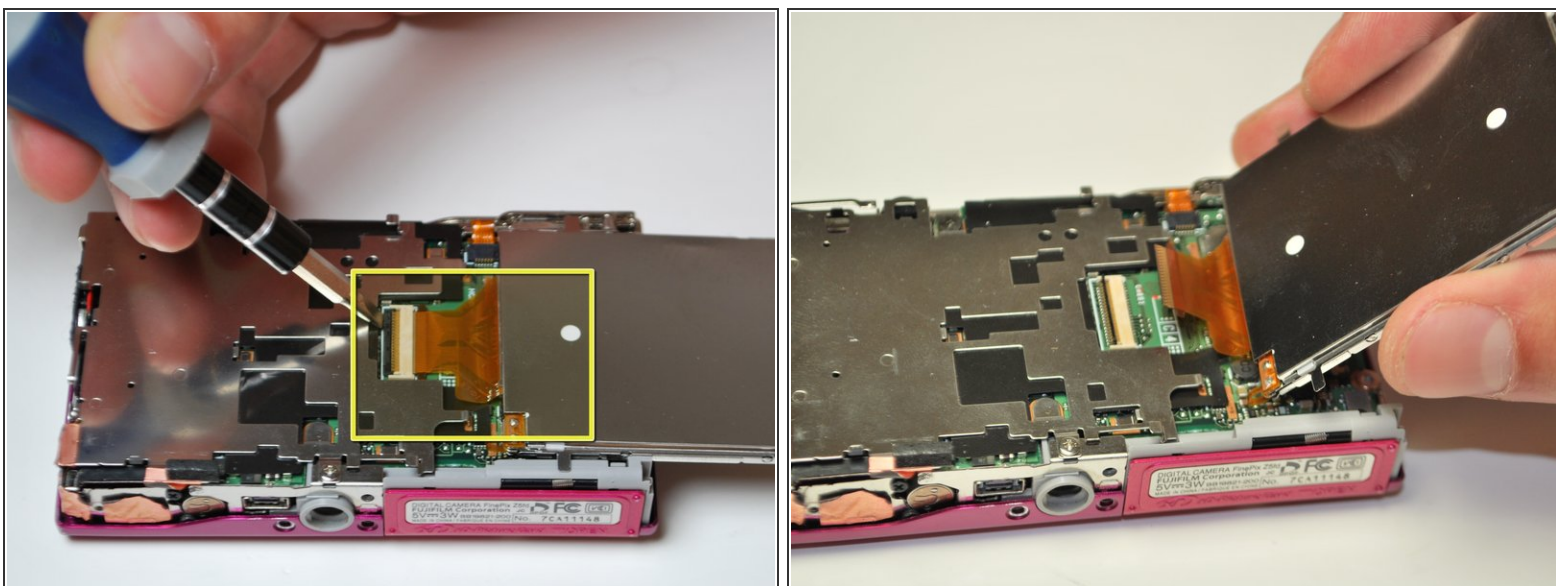
Step 4



- Pull the LCD screen to the left slightly, then lift and flip it open to the right.

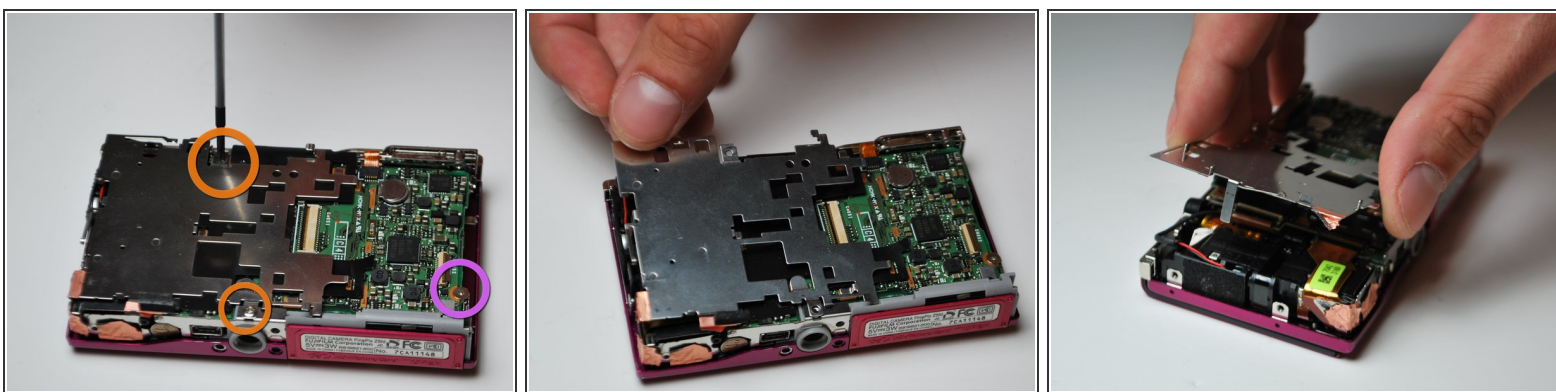
⚠ There is an orange ribbon cable attaching the LCD screen to the motherboard, be careful not to tear it.

Step 5



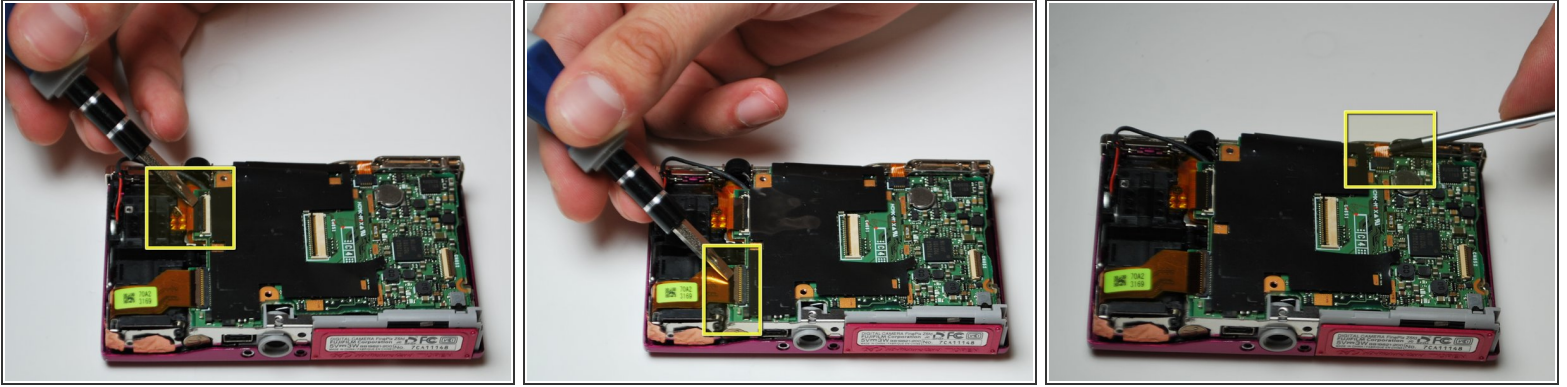
- Using a plastic opening tool to flip open the black lever to release the ribbon cable.
- Gently slide the cable out of the lock; the LCD screen is now free to be removed.

Step 6



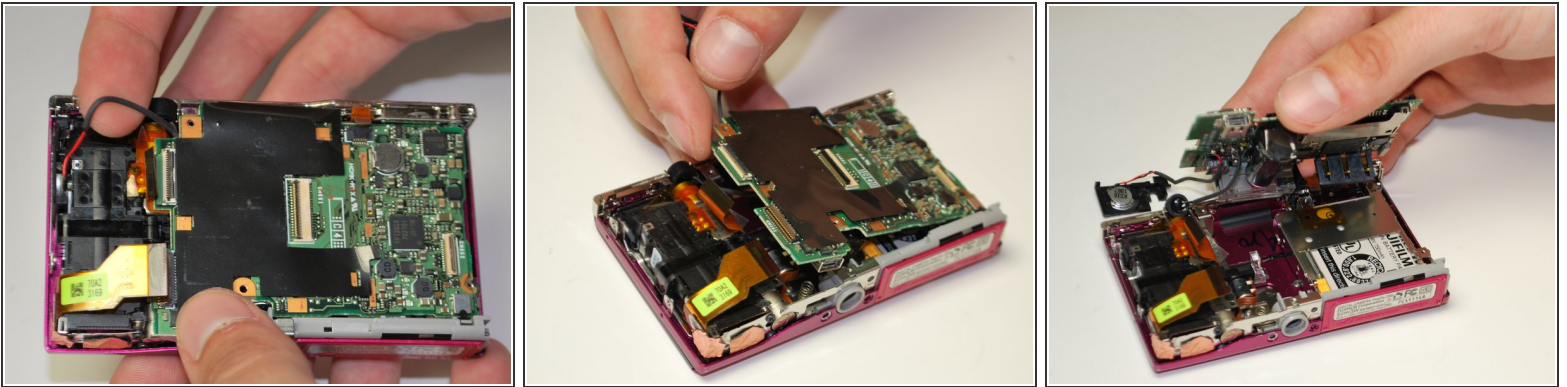
- Remove the two screws that are holding the silver paneling on.
- There is a gold foil which will tear upon removal of the silver paneling, this is normal.
- Remove the screw anchoring the motherboard on the right.

Step 7



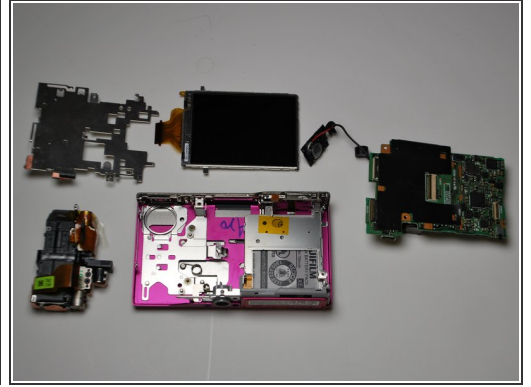
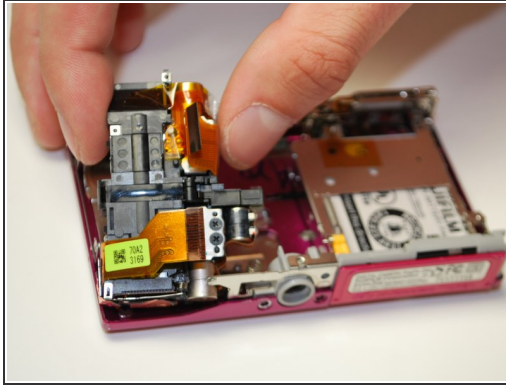
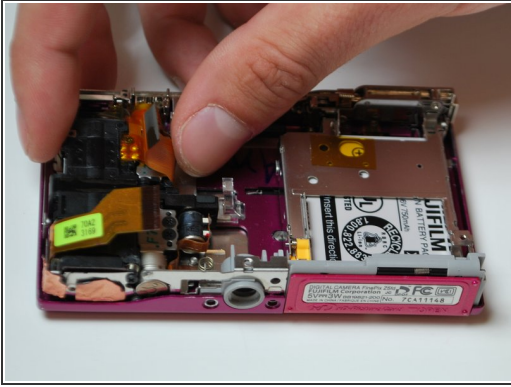
- Detach the two ribbon cables on the left side of the camera the same way the LCD cable was detached.
- Detach the gold ribbon cable on the top middle of the camera as well.

Step 8



- Hold wires on the left with an index finger, to keep them out of the way.
- Carefully wiggle out the motherboard. The flash and the speaker will come with it.
- ⓘ Make sure you have a motherboard that includes the flash and the speaker; these items are both soldered onto the motherboard.

Step 9



- Lift the lens off of the camera base (there is nothing anchoring it down).

To reassemble your device, follow these instructions in reverse order.