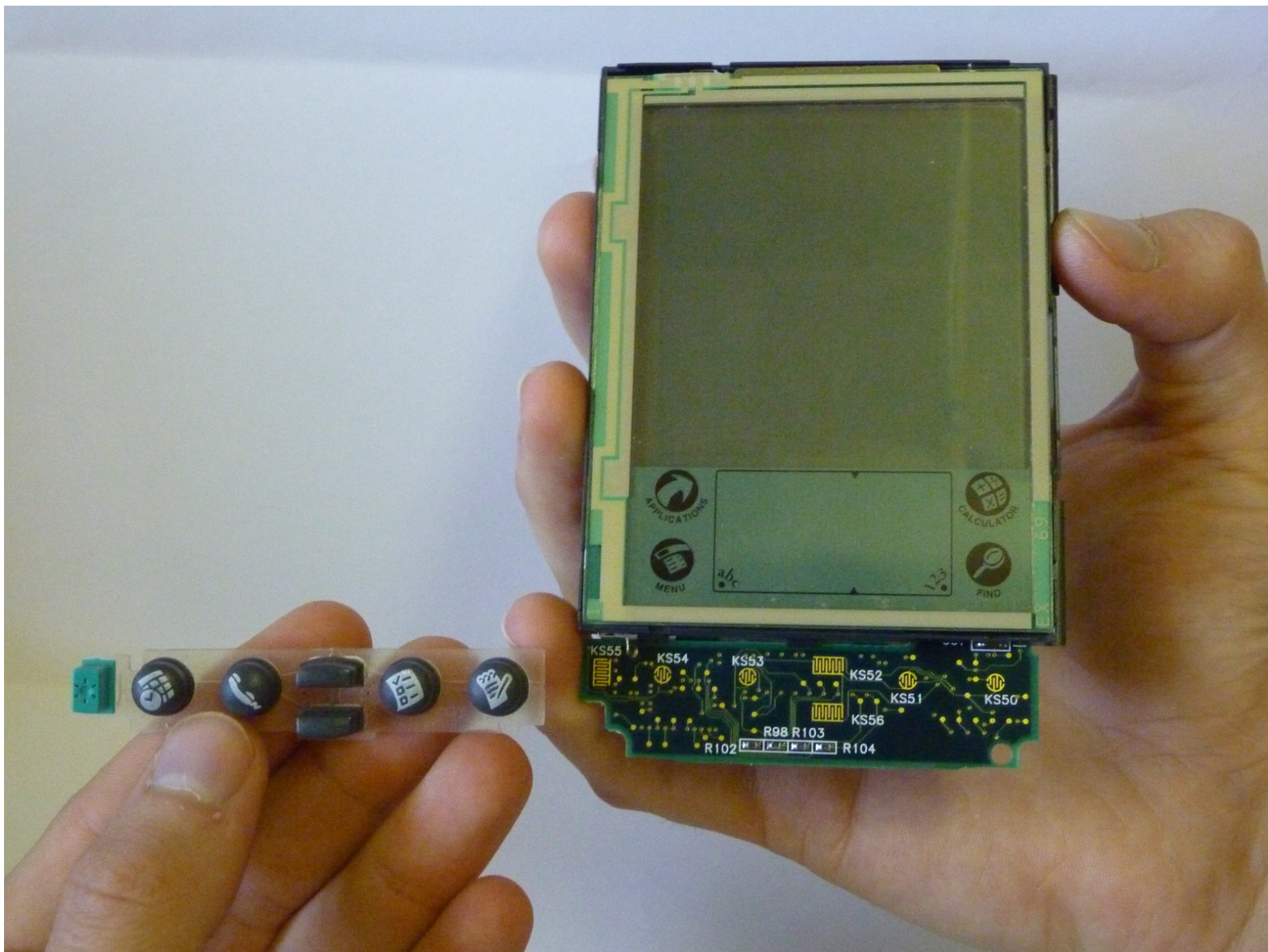




# Palm Pilot Professional 3com Keypad Replacement

Installing a new keypad make sure to have a replacement keypad on hand.

Written By: Kevin Santos



---

## INTRODUCTION

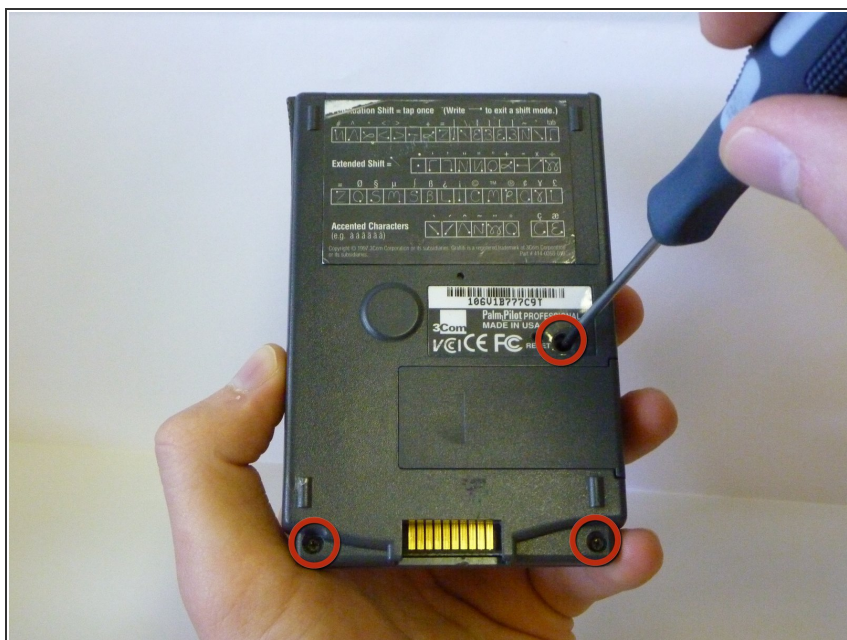
How to install a new keypad if your buttons malfunction or are worn.



### TOOLS:

- [Phillips #00 Screwdriver](#) (1)
-

## Step 1 — Keypad



- Unscrew the three screws on the back of the Palm Pilot.

## Step 2



- Pull the back cover from the bottom of the device and separate the interlocking tabs on the top to remove the back cover.

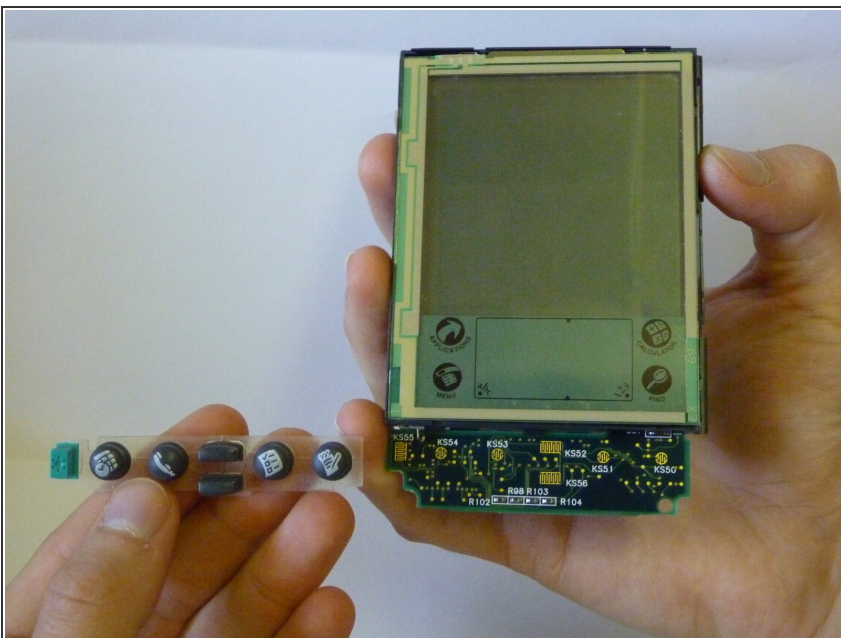


### Step 3



- The front plastic cover is now free to be removed from the rest of the device.

### Step 4



- The keypad is now free to be removed from the rest of the device.

To reassemble your device, follow these instructions in reverse order.