



Bolide Technology Group Dual Alarm Clock Speaker Replacement

Disassembly and removal of a broken speaker in the Bolide Technology Group Dual Alarm Clock.

Written By: Mercy Adeshola



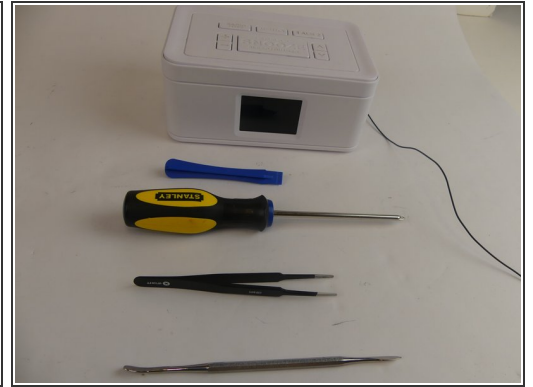
INTRODUCTION

Demonstrate the tear-down process and the removal of a broken speaker in the Bolide Technology Group Dual Alarm Clock, so that others looking to replace the speaker have a basis to build from.

TOOLS:

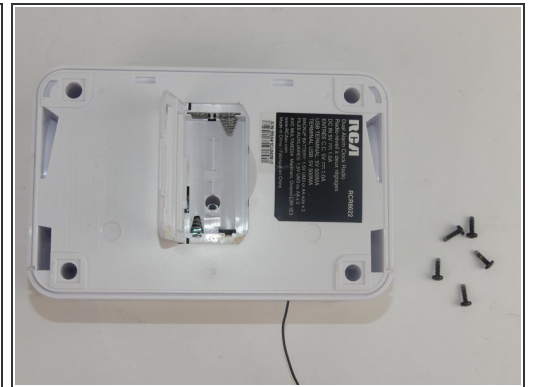
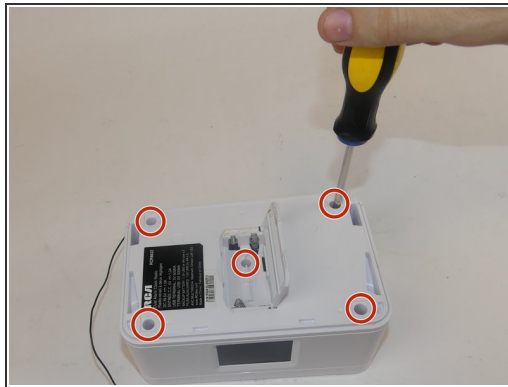
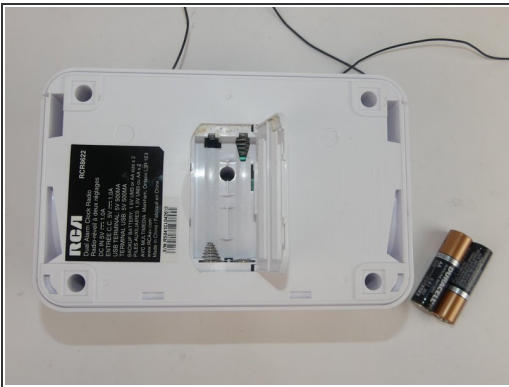
- [nylon pry tool](#) (1)
 - [Phillips Head Screwdriver: Size PH1](#) (1)
 - [Tweezers](#) (1)
 - [Metal Probe](#) (1)
-

Step 1 — Speaker



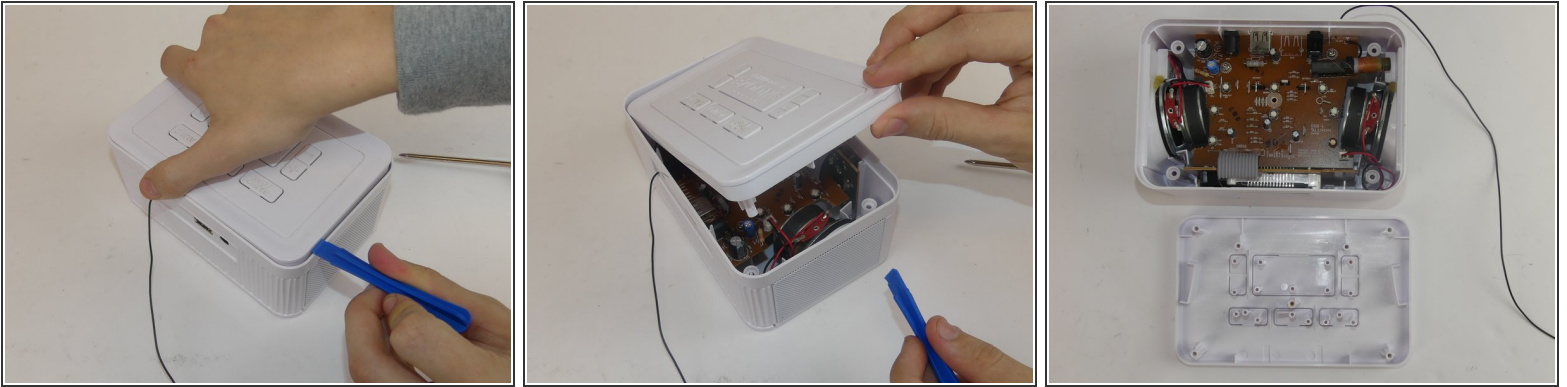
- Slide the clear plastic case off of the speaker

Step 2



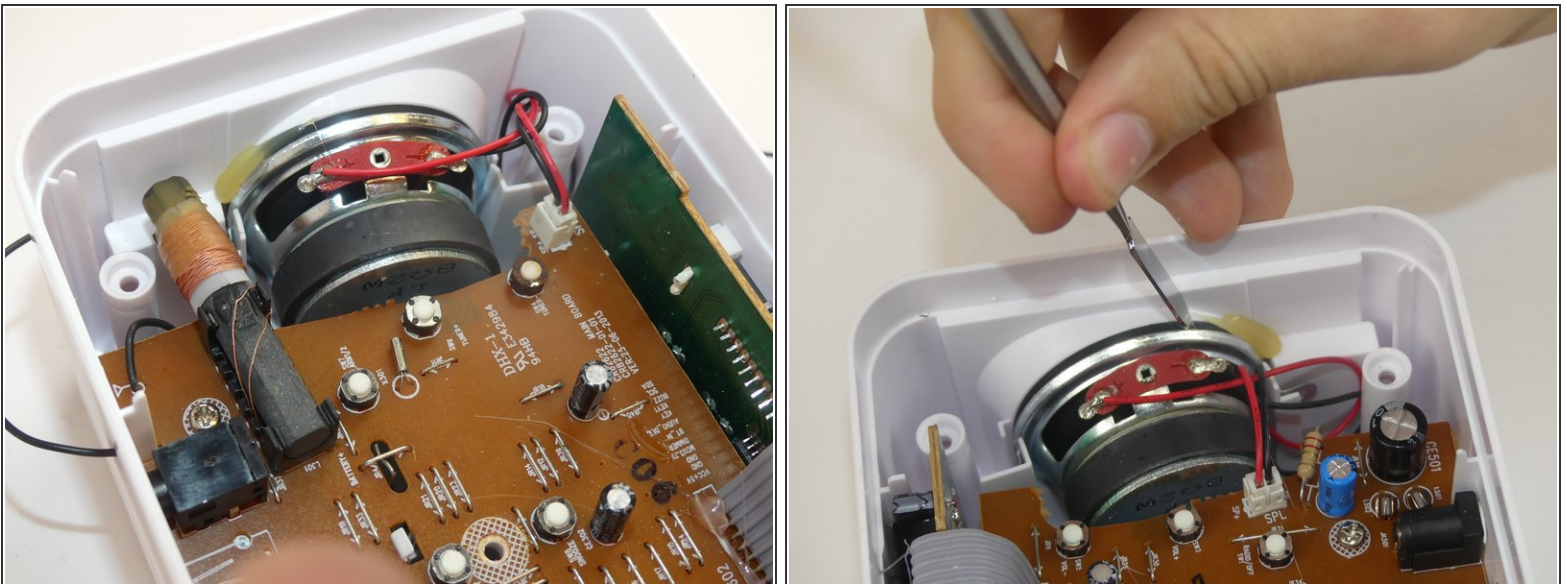
- Remove the batteries on the bottom of the radio
- Locate and remove the five screws on the bottom of the radio with a Philips Head Screwdriver.
- ☑ Make sure to keep your screws together so you don't lose them.

Step 3



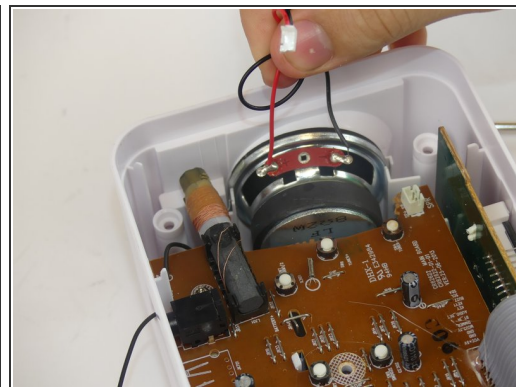
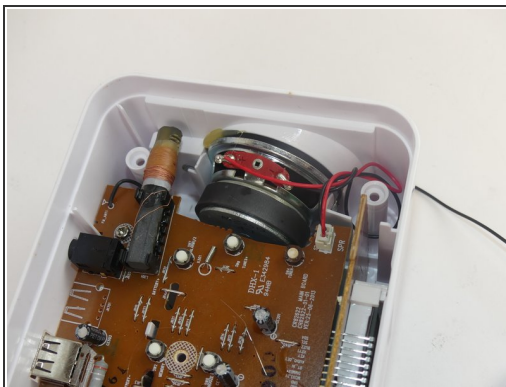
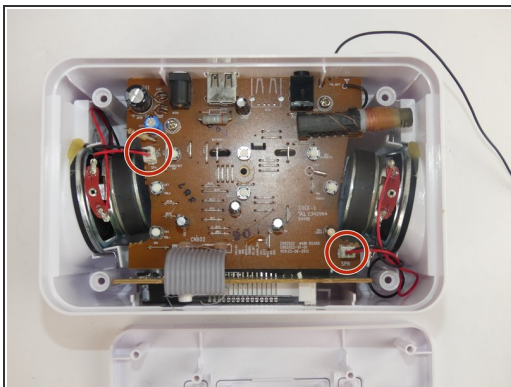
- Grab your nylon pry tool and wedge it between the outer case and the top of the radio. Slowly pry open the top and remove it.
- ⓘ This may be more difficult to take off if the top hasn't been removed before, but it may be easier to turn the clock upside down for this step.

Step 4



- Using a [black nylon spudger](#) to carefully break the glue around the outside of the speaker so it can be dislodged.

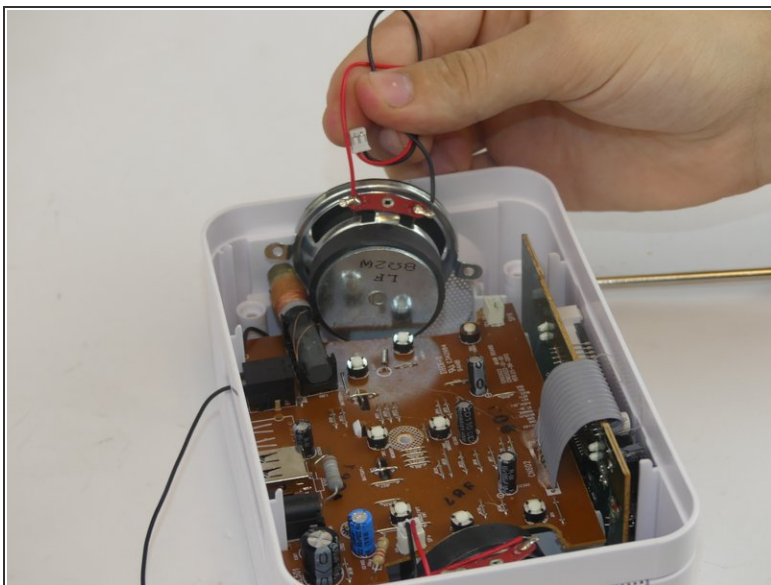
Step 5



- Locate the speaker plug for the speaker you wish to remove and slightly tug on it until it becomes unplugged

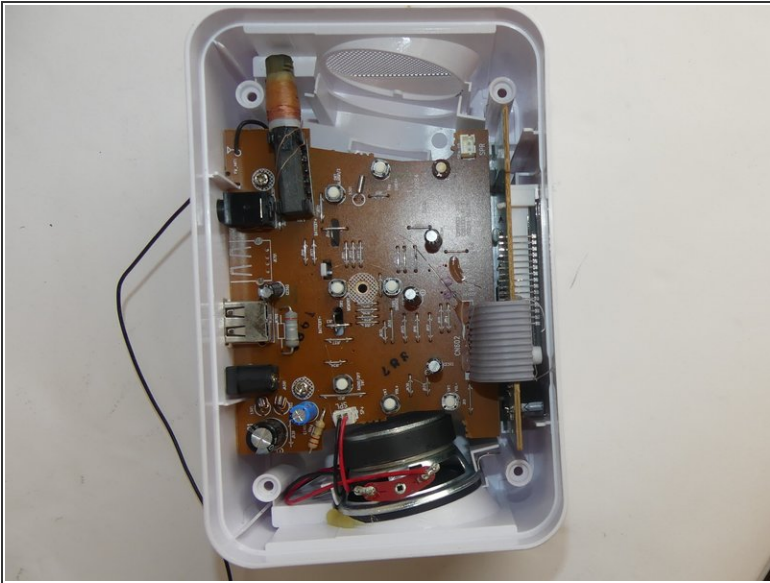
 This can also be done with a pair of tweezers if you find there isn't enough space.

Step 6



- After the speaker cord is removed, pull the speaker straight up and out of the radio.

Step 7



- Once the speaker is removed, the inside of the dual alarm clock should look identical to the photo shown.

To reassemble your device, follow these instructions in reverse order.