



Huawei Watch Jewel Motherboard Replacement

Written By: ngan tran



INTRODUCTION

Use this guide to replace the motherboard in your Huawei Watch Jewel. A damaged motherboard could be the cause for several different malfunctions regarding the watch, as it acts as the brain of the device. The screws used to hold together the watch are quite small, so handle them with care.



TOOLS:

- [Magnetic Project Mat](#) (1)
- [Tweezers](#) (1)
- [Metal Spudger](#) (1)
- [T3 Torx Screwdriver](#) (1)
- [Pro Tech Toolkit](#) (1)

150 mm Flex Extension



PARTS:

- [Huawei Watch Motherboard](#) (1)

Step 1 — Strap



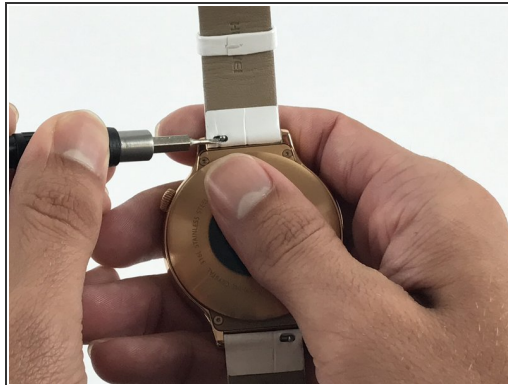
- Begin by laying the watch on a flat, smooth surface.
- ⓘ This will prevent the watch screen from suffering damage.
- Obtain a Flex Extension with a Size 1.0 mm flat-head. In the case of not having said tool, for this model of watch one can use the hands to replace the strap.

Step 2



- Locate the two springs on the back of your watch.
- i** The watch comes with two of these springs on each side of the back-face. These are used to release the straps from the body of the watch.

Step 3



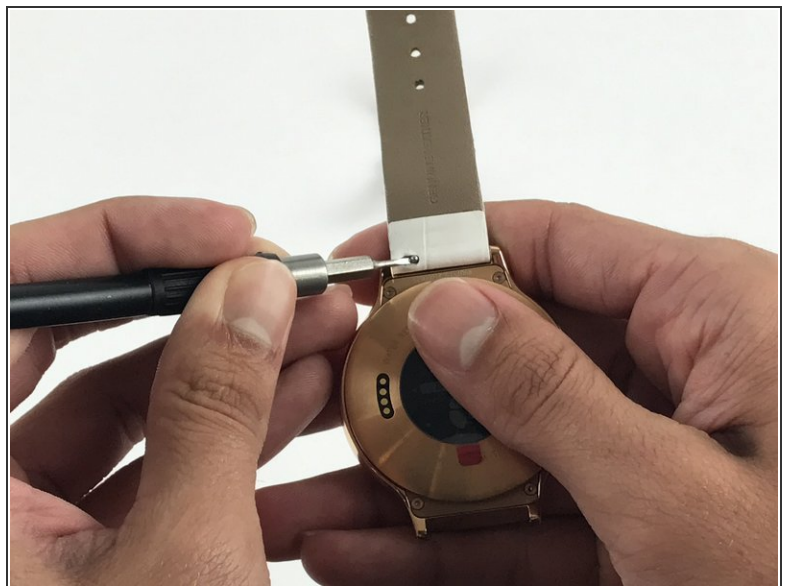
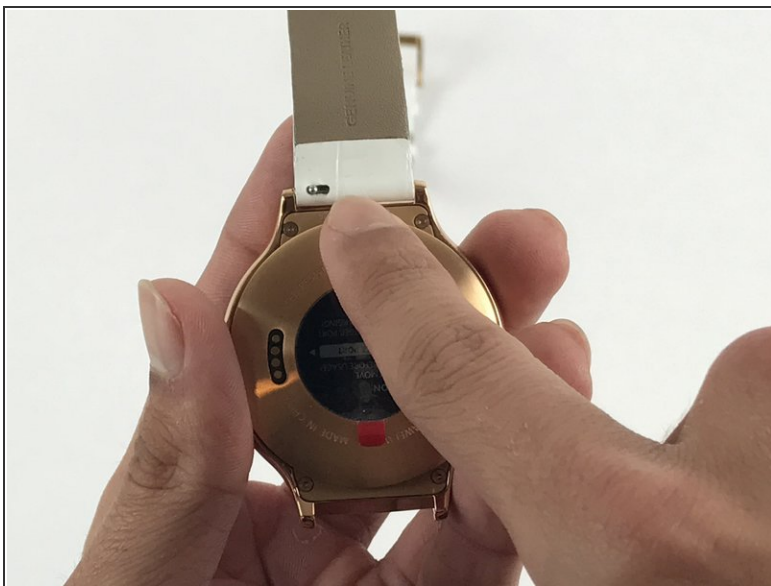
- Use the Flex Extension to push the spring to the right. This will release the strap from the watch head.

Step 4



- Carefully pull the strap away from the watch.

Step 5



- Repeat step 3, this time using the other strap.

Step 6 — Motherboard



- Locate the 4 T3 screws in the back of your watch, and use the T3 Torx Screwdriver to unscrew them.

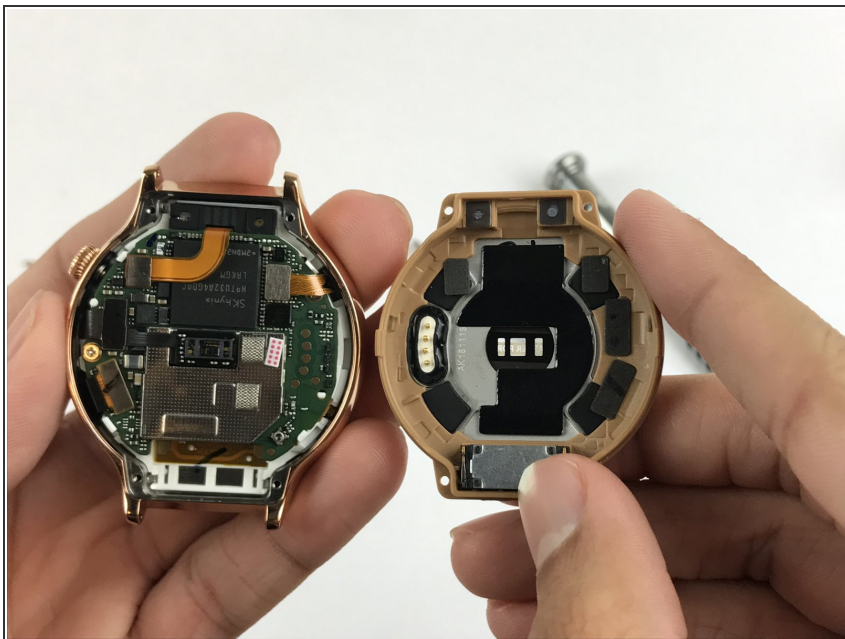
Step 7



- Use the Metal Spudger to pry open the back of your watch.

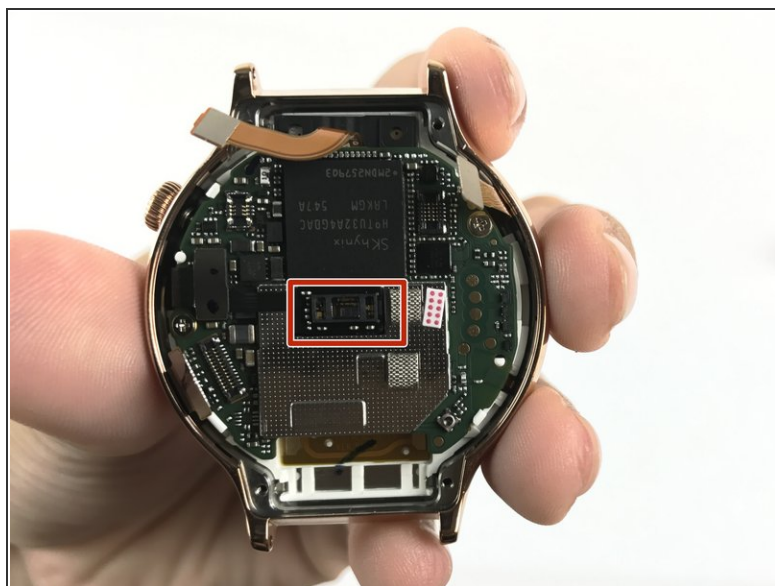
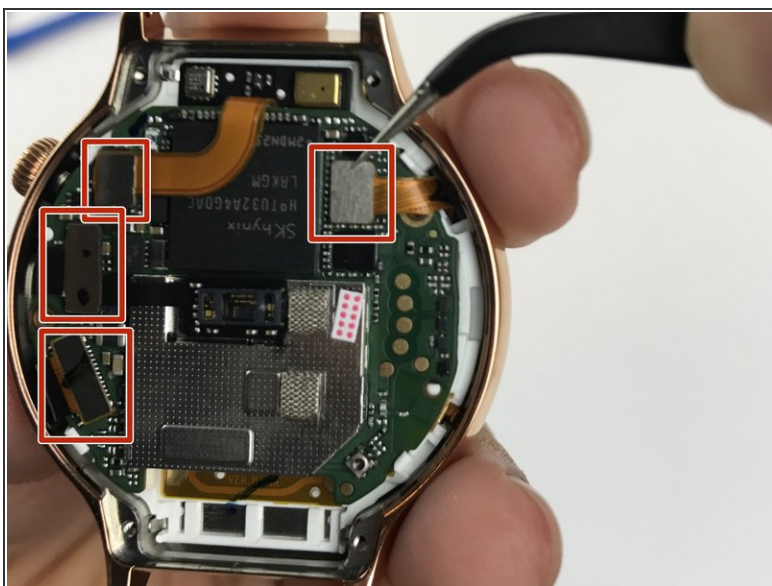
⚠ Make sure the watch is off and not plugged in when prying into the case with the Metal Spudger to avoid the risk of electric shock.

Step 8



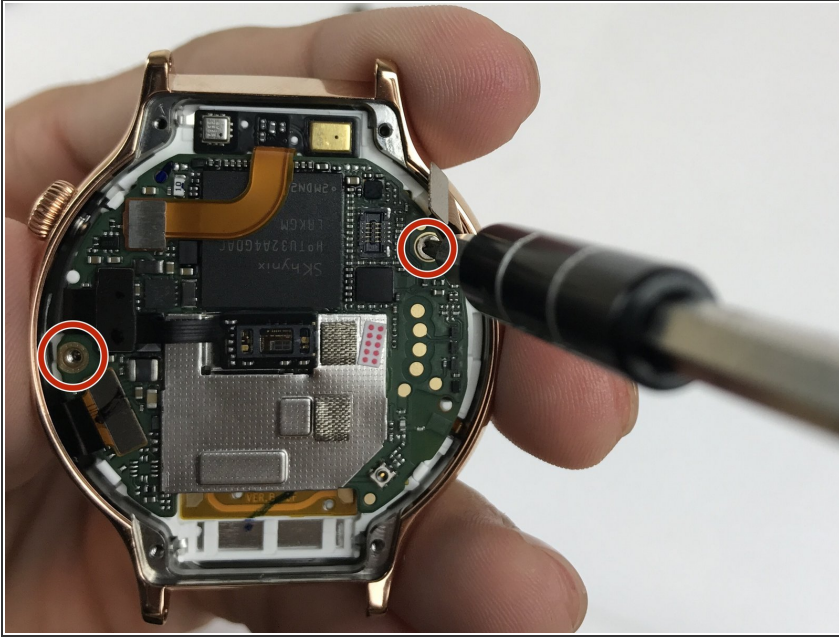
- Remove the back case.

Step 9



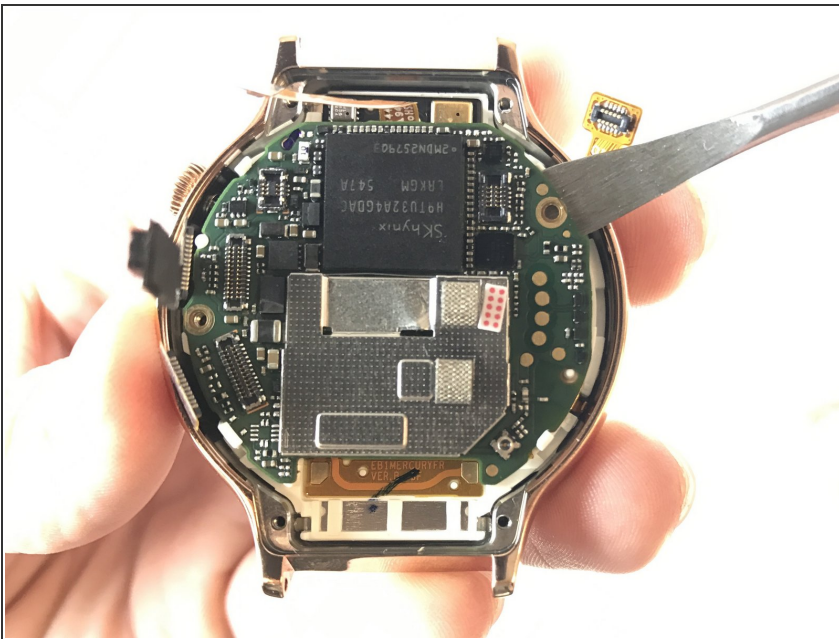
- Use tweezers or a nylon spudger to pry up the four press-fit connectors.
- ⓘ The glued-down connector in the middle is harder to remove than the rest. That is perfectly fine.

Step 10



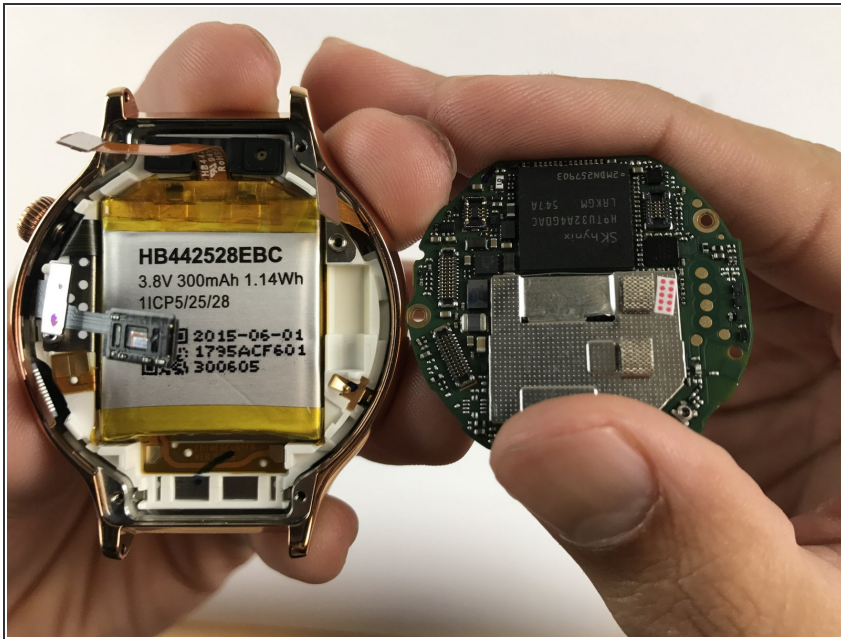
- Locate the two Phillips #00 screws holding down the motherboard, and use the Phillips #00 screwdriver to remove them.
- ☑ Ensure to place these screws separately from the Torx screws, as they can easily be mixed up.

Step 11



- Use the Metal Spudger to lift the mother board from the watch.
- ⚠ The metal spudger may cause damage to the device, use a [black nylon spudger](#) when possible.

Step 12



- Remove the motherboard.

To reassemble your device, follow these instructions in reverse order.