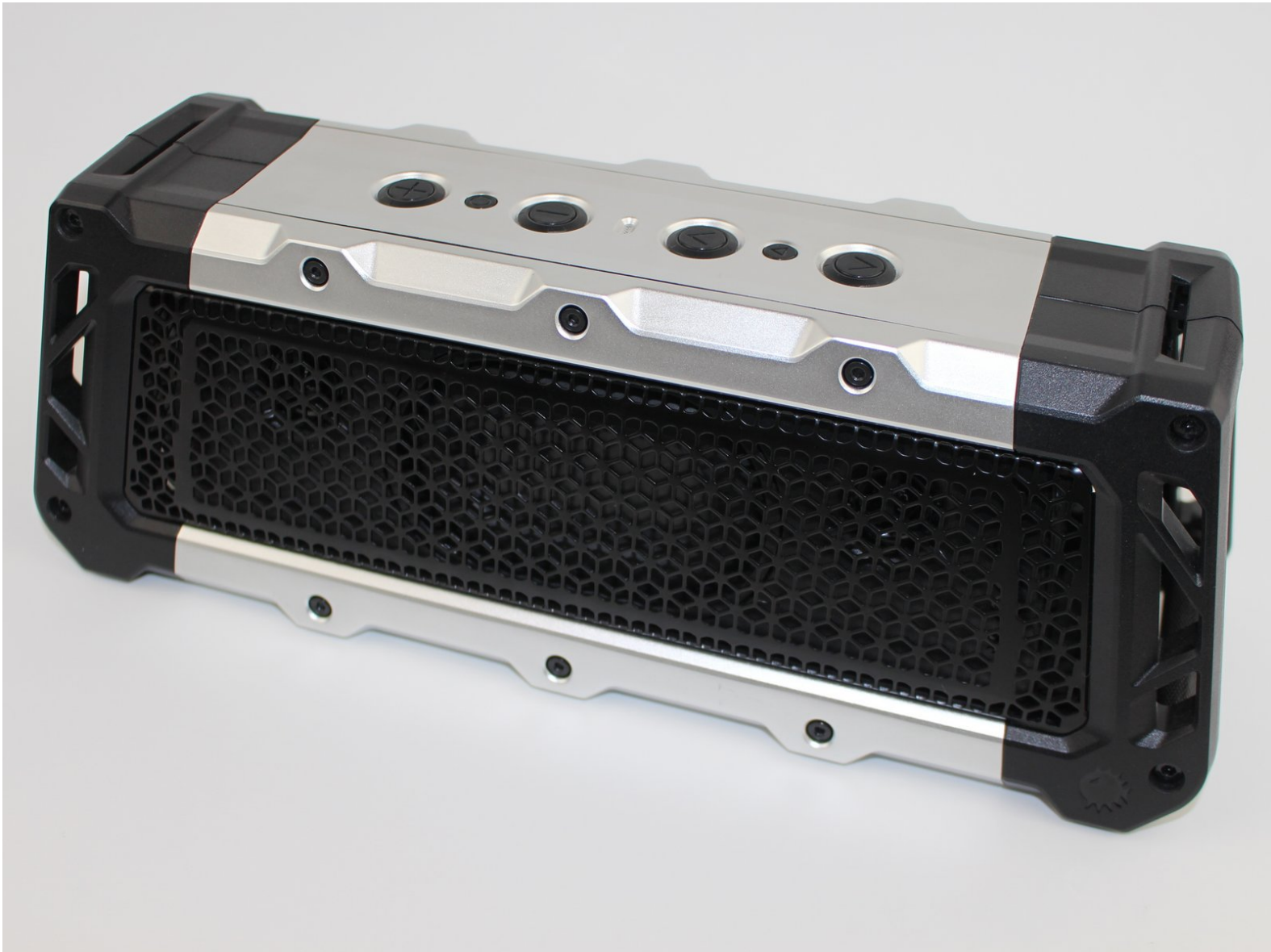




Fugoo Tough XL Case Replacement

The Fugoo Tough XL speaker has an external...

Written By: Abdul



INTRODUCTION

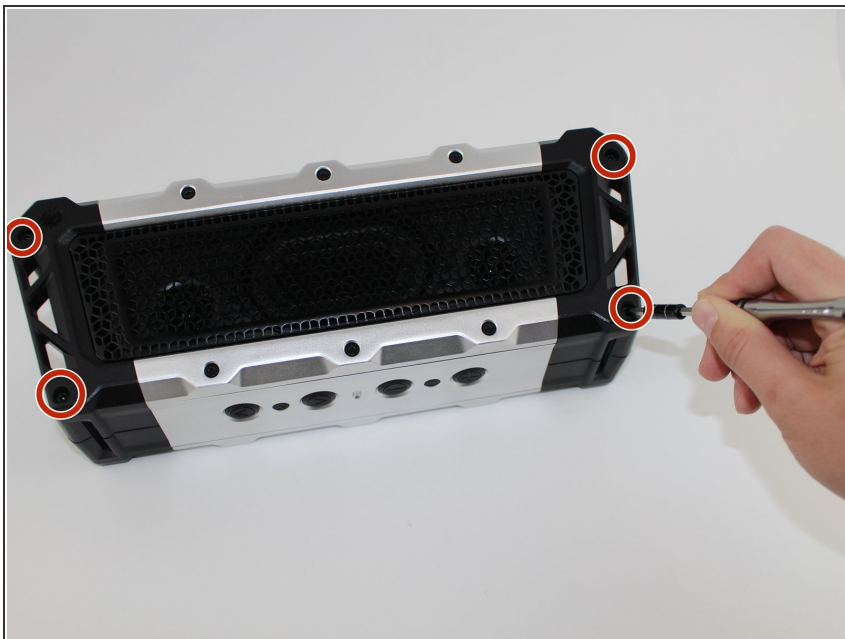
The Fugoo Tough XL speaker has an external shell that can be removed to make necessary repairs.



TOOLS:

- [iFixit Opening Tool](#) (1)
 - [TR10 Torx Security Screwdriver](#) (1)
 - [3mm Hex Key \(or Bit\)](#) (1)
-

Step 1 — Case



- Remove four 3 mm screws using a 3 mm Hex screwdriver.

Step 2



- Gently remove the outer casing.

i It should be relatively easy to pull apart, but in the case that it is not easy, don't be afraid to apply the necessary force to pull them apart.

Step 3



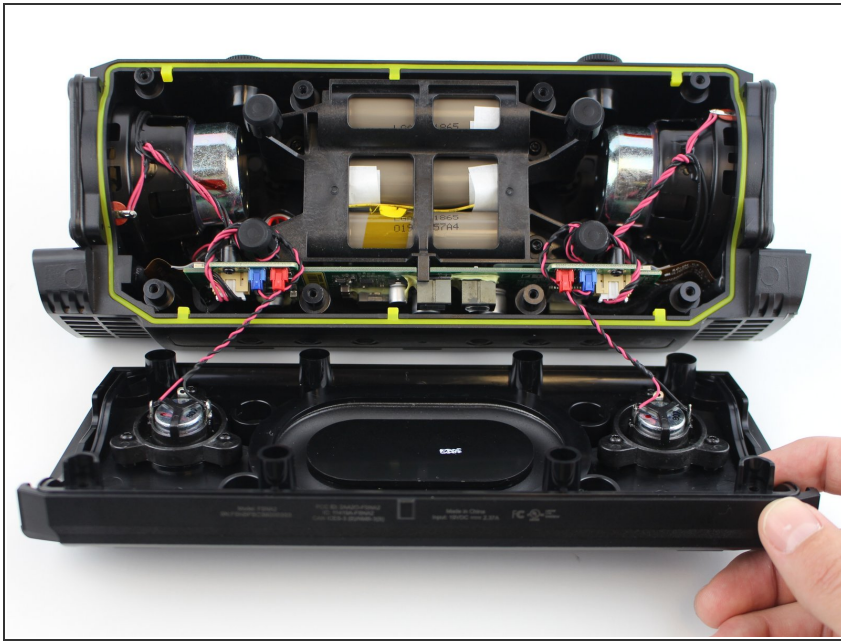
- Pull the device from the external case.
- Remove four 12 mm screws using a T10 Torx screwdriver.
- Remove eight 6 mm screws using a T10 Torx screwdriver.

Step 4



- Use your hands to gently remove the side plates.
 - Use the plastic opening tool to pry off the back plate.
- ❗ It is best to work on the side with the Fugoo trademark.

Step 5



- Slowly pull the front casing from the back casing. If possible, try to avoid putting any tension on the connected cables.

⚠ Separate the two at a slow, consistent pace to avoid damaging the speaker cables.

To reassemble your device, follow these instructions in reverse order.