



# Griffin iFM 4027 Left Side Panel Replacement

There are no prerequisites required for this...

Written By: Alexander



---

## INTRODUCTION

There are no prerequisites required for this disassembly, but a spudger or similar opening tool is required to remove the panel.



### TOOLS:

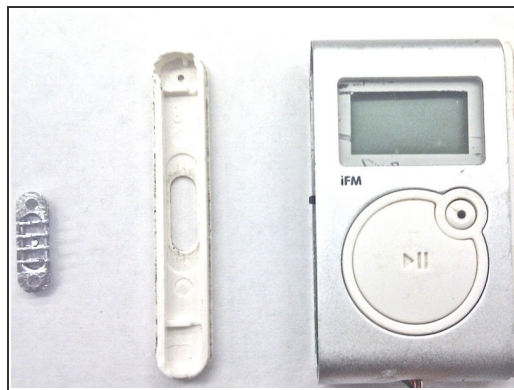
- [iFixit Opening Tool](#) (1)
-

## Step 1 — Left Side Panel



- Lodge the tip of the plastic opening tool into the top arc where the side and main part of the device meet.
- Push the plastic opening tool upward until the side panel detaches.

## Step 2



- Slide the plastic opening tool along the panel seam and push upward until the side panel detaches from the main device.
- Turn over the detached side panel, so that the outer side is facing downward.
- Then use your fingers to disassemble the panel button and set it off to the side.

To reassemble your device, follow these instructions in reverse order.