



# HP Compaq Presario CQ56-110US Repair Wi-Fi Card Replacement

Use this guide to fix wireless connectivity issues by replacing the defective wifi card on the HP Compaq Presario CQ56-110US laptop.

Written By: Blannette Baltimore



This document was generated on 2020-11-17 07:23:39 PM (MST).

---

## INTRODUCTION

Use this guide to fix wireless connectivity issues by replacing the defective wifi card.

---



### TOOLS:

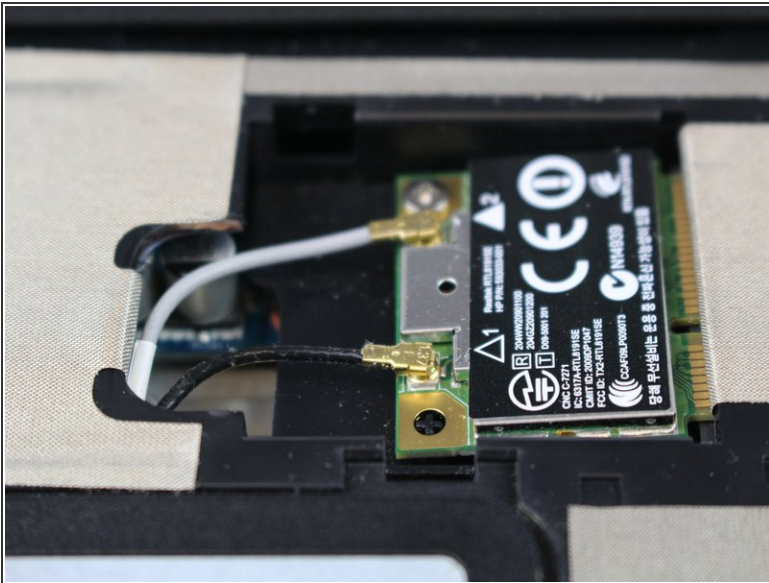
- [Phillips Head Screwdriver: Size PH1](#) (1)
  - [iFixit Opening Tools](#) (1)
-

## Step 1 — Wi-Fi Card



- Use a Phillips screwdriver with a PH1 bit to loosen the three indicated screws.
- ⓘ The screws do not come free from the panel. They only need to be loosened enough so that the panel can be lifted/pried using a plastic opening tool.

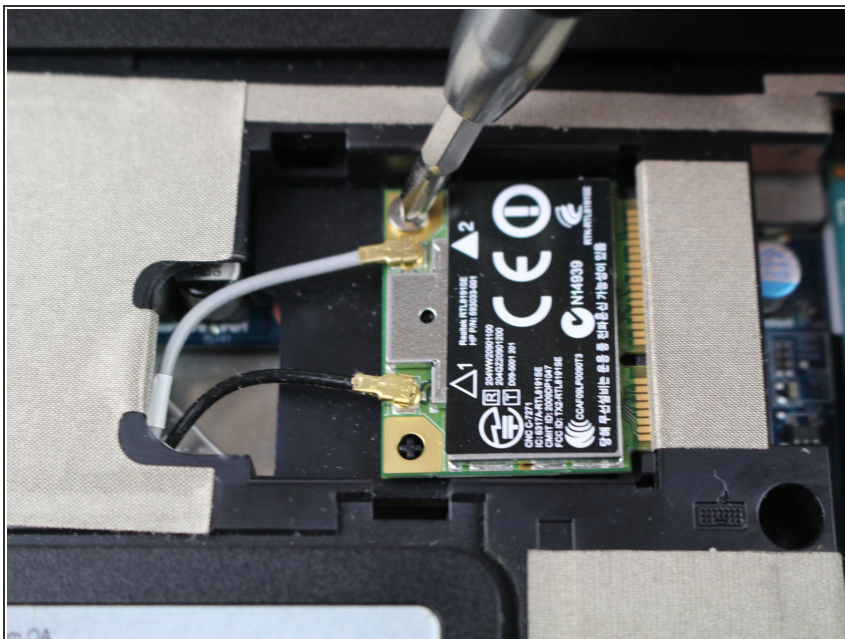
## Step 2



- Gently pull the black and white cables to disconnect them from the Wi-Fi card.

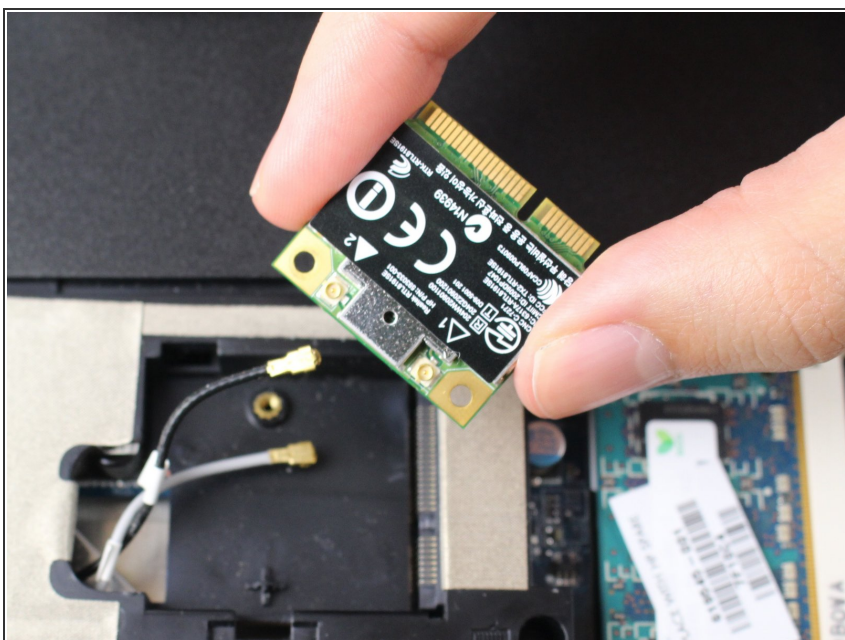


### Step 3



- Use the same screwdriver to remove the two 3 mm screws holding the card in place.

### Step 4



- Lift the Wi-Fi card to remove it from the slot.

To reassemble your device, follow these instructions in reverse order.