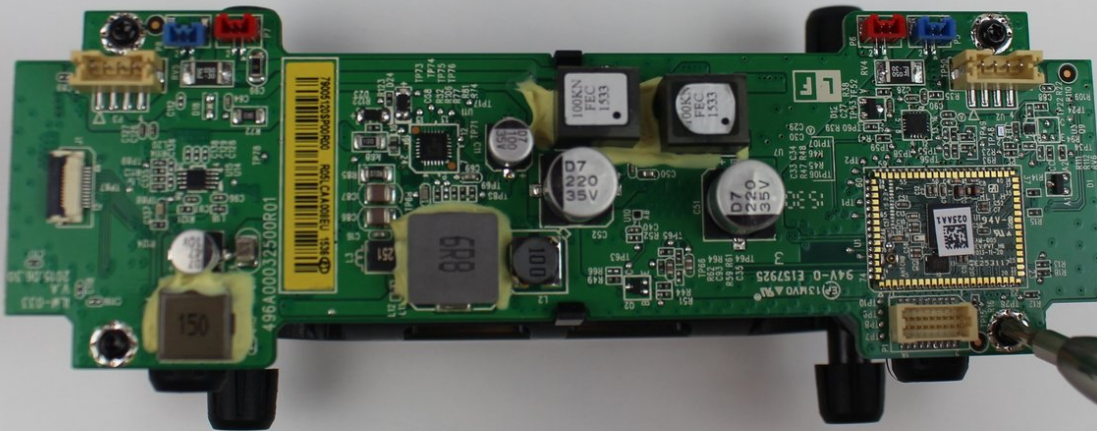




Fugoo Tough XL Motherboard Replacement

Use this guide to remove and replace the...

Written By: Abdul



INTRODUCTION

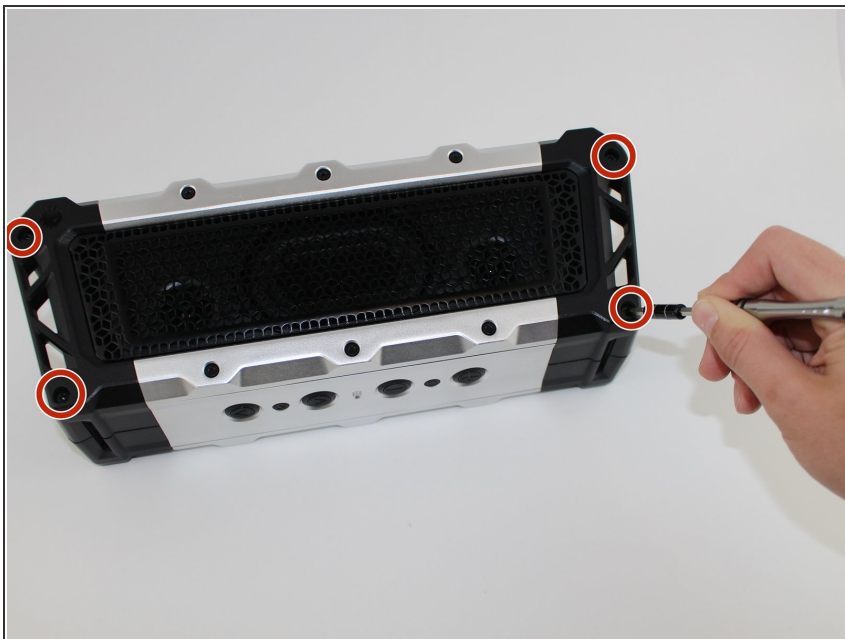
Use this guide to remove and replace the motherboard.



TOOLS:

- [3mm Hex Key \(or Bit\)](#) (1)
 - [iFixit Opening Tool](#) (1)
 - [TR10 Torx Security Screwdriver](#) (1)
 - [Tweezers](#) (1)
-

Step 1 — Case



- Remove four 3 mm screws using a 3 mm Hex screwdriver.

Step 2



- Gently remove the outer casing.

i It should be relatively easy to pull apart, but in the case that it is not easy, don't be afraid to apply the necessary force to pull them apart.

Step 3



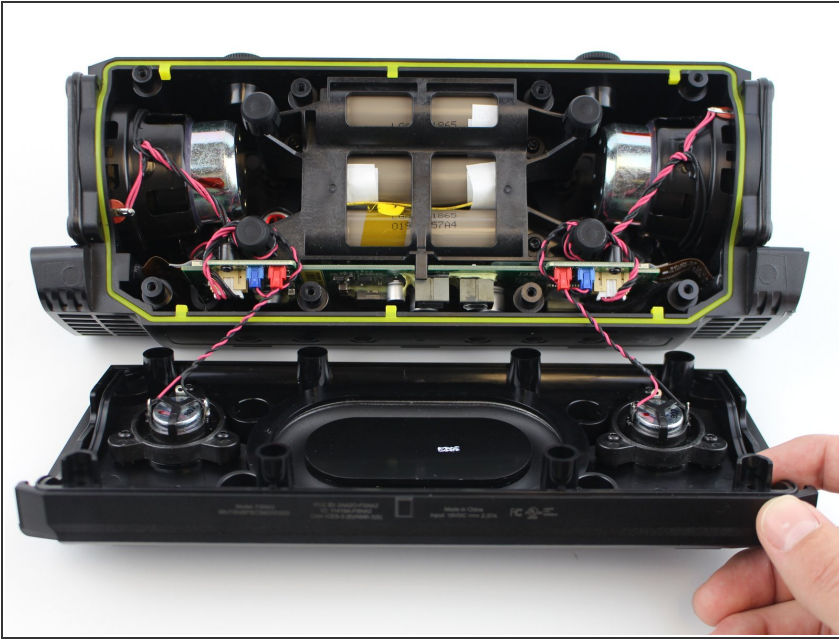
- Pull the device from the external case.
- Remove four 12 mm screws using a T10 Torx screwdriver.
- Remove eight 6 mm screws using a T10 Torx screwdriver.

Step 4



- Use your hands to gently remove the side plates.
 - Use the plastic opening tool to pry off the back plate.
- ❗ It is best to work on the side with the Fugoo trademark.

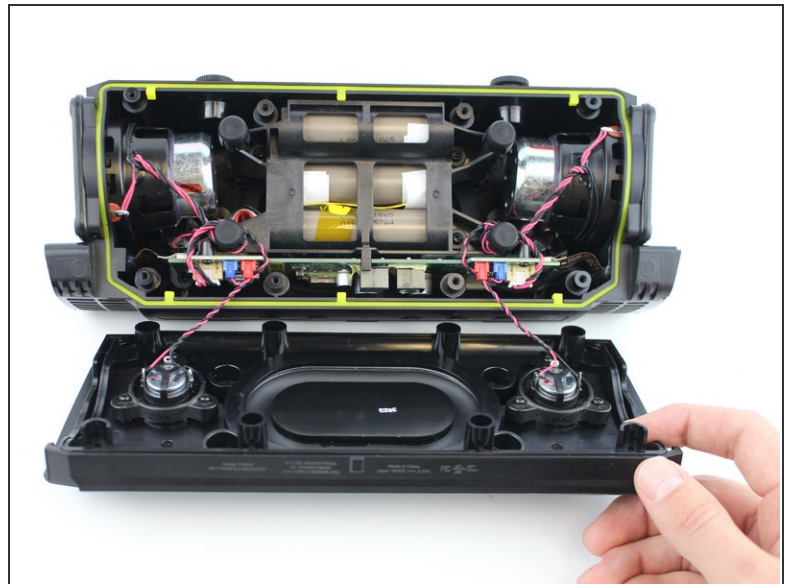
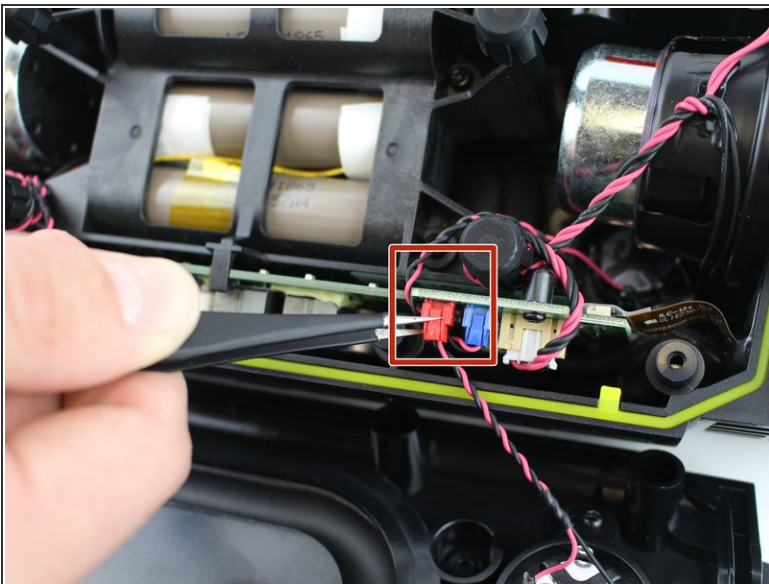
Step 5



- Slowly pull the front casing from the back casing. If possible, try to avoid putting any tension on the connected cables.

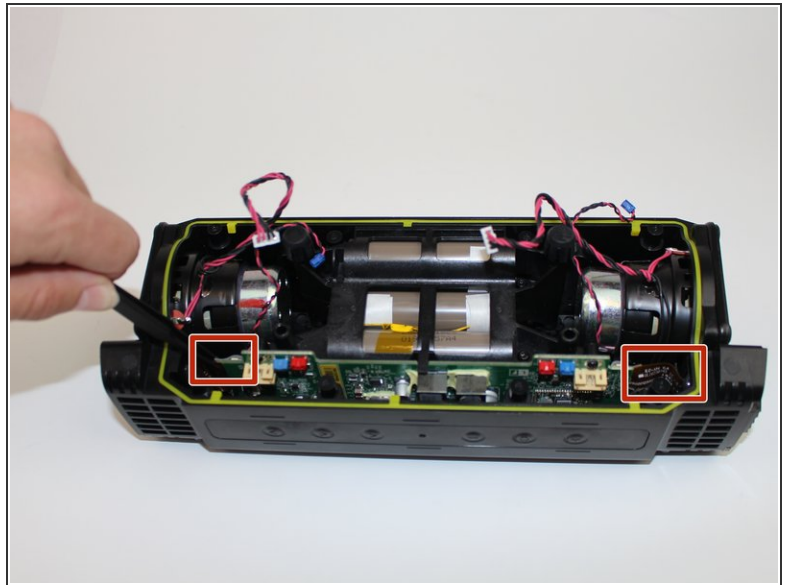
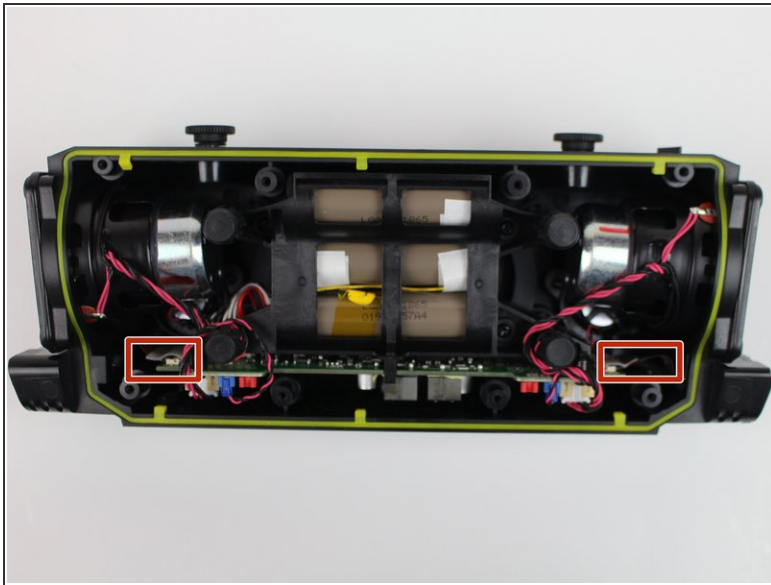
⚠ Separate the two at a slow, consistent pace to avoid damaging the speaker cables.

Step 6 — Motherboard



- Carefully untangle the wires that connect the speaker to the motherboard.

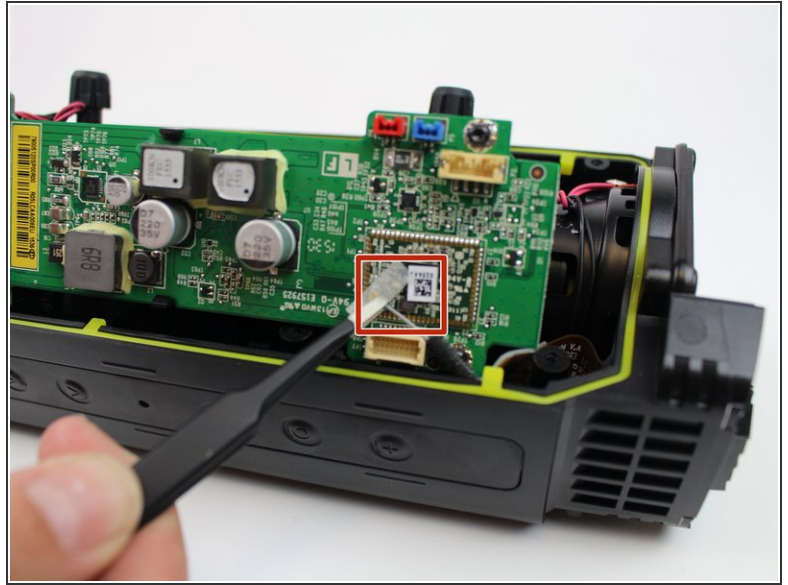
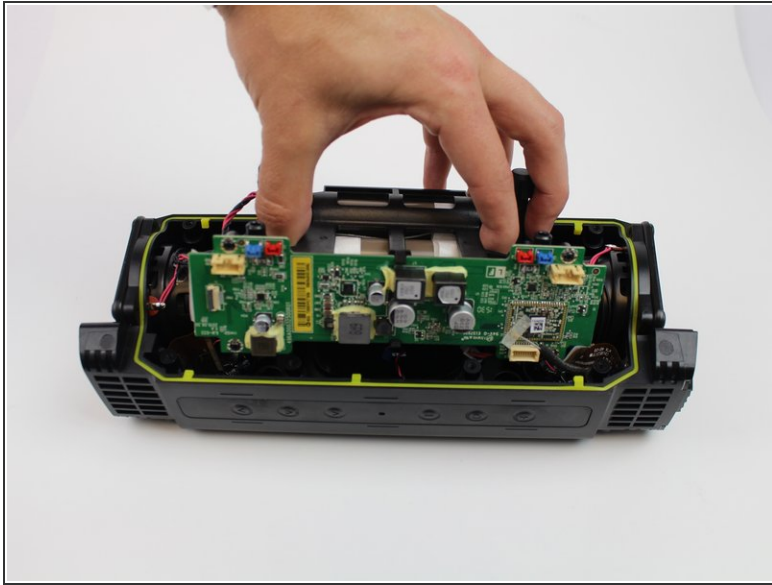
Step 7



- Use tweezers to remove the two ribbon wires on the left and right side of motherboard.


⚠ Do not pull the cables by the cord, as this could damage the cables and the motherboard. It is best to always disconnect the cables from the base, which is closest to the motherboard, using an iFixit opening tool.

Step 8

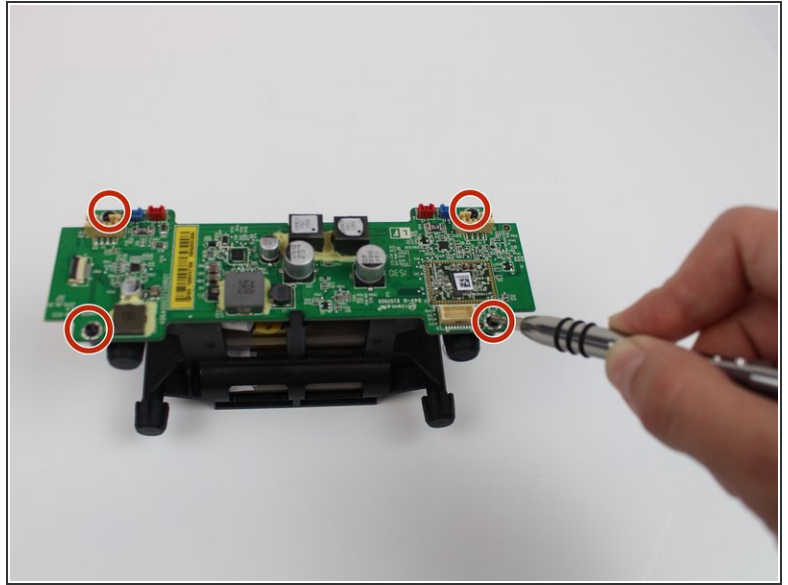


 Pull the motherboard halfway out.

- Gently unplug the ribbon using the tweezers.

 There is a hidden ribbon on the motherboard, that becomes visible once the motherboard has been pulled out.

Step 9



- Remove the motherboard and battery.
- Remove four 3 mm screws from the motherboard using a 3 mm Hex screwdriver.

To reassemble your device, follow these instructions in reverse order.