



# Sony Ericsson W350a Keypad Replacement

This guide will give step-by-step instructions on how to disassemble the Sony Ericsson W350a and how to remove the keypad.

Written By: Ldellos





## TOOLS:

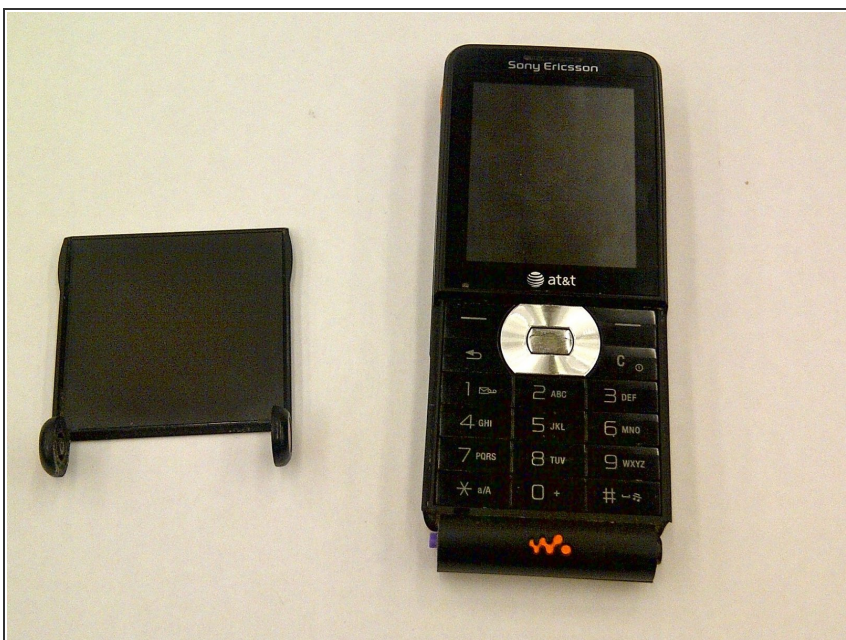
- [Pro Tech Toolkit](#) (1)
- [iFixit Opening Tools](#) (1)
- [Phillips #00 Screwdriver](#) (1)

## Step 1 — Flip Cover



- Place the plastic opening tool in the bottom corner of the phone in the crevice between the flap to remove the cover.

## Step 2



- Remove the cover with a slight twisting motion.

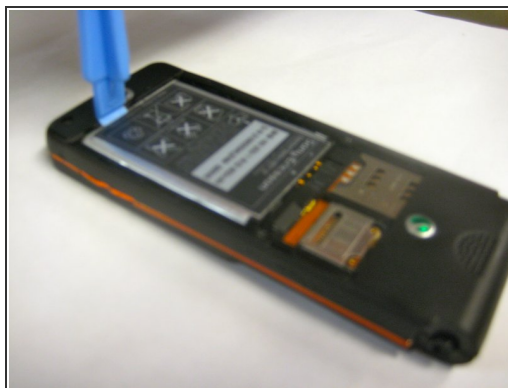


### Step 3 — Battery



- Place the phone face down on a flat smooth surface so that the camera, logos, and speaker face up.
- Using the provided notch on the bottom of the back cover, insert a plastic opening tool and lift upwards to remove the back cover of the phone.

### Step 4



- Set the cover to the side upon removal.
- Insert the plastic opening tool into the crevice between the camera and the battery of the phone. Using a gentle prying motion, lift the end of the battery and remove.
- After removal, recycle the defective battery appropriately.

## Step 5 — Speaker



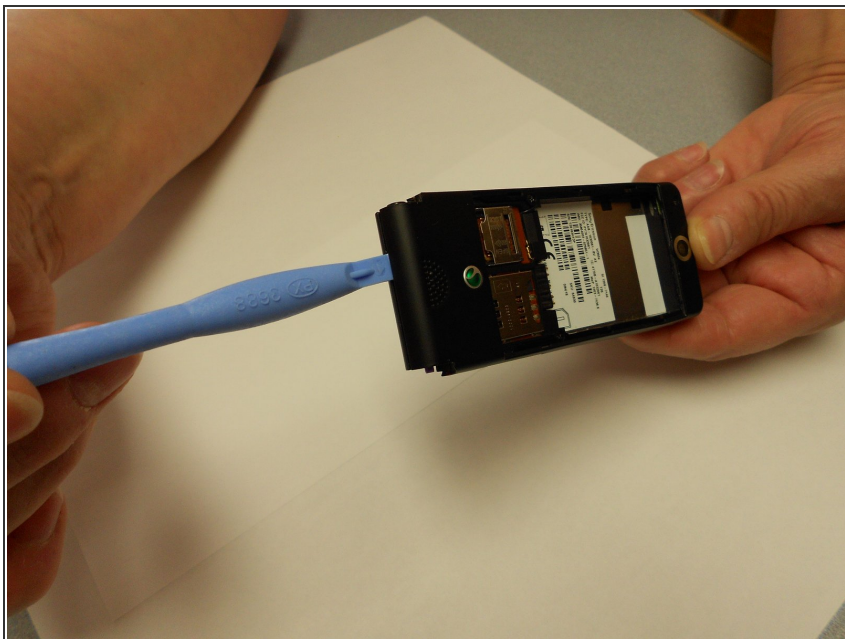
- Flip the phone over and remove the Sony Ericsson sticker that is over the phone's ear speaker.
- Using a T5 screwdriver, loosen and remove the two screws under the Sony Ericsson sticker by turning them counterclockwise.

## Step 6



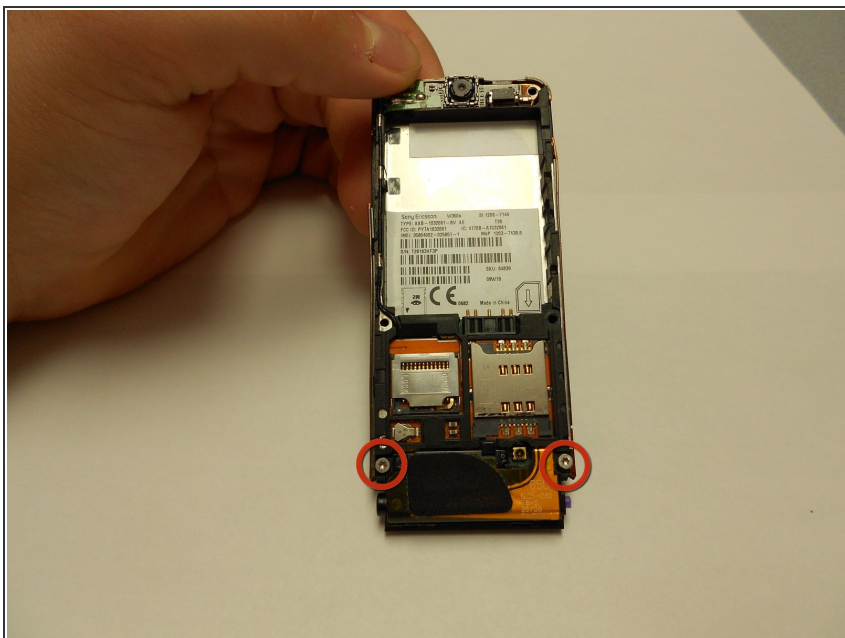
- Using a mini Phillips screwdriver, remove two screws by turning them counterclockwise.

## Step 7



- Insert an opening tool in the bottom crack between the front and back plates and use a gentle upward pull to separate the back case from the front case.
- ⓘ Side buttons/controls may fall from their place in between the back and front casings.

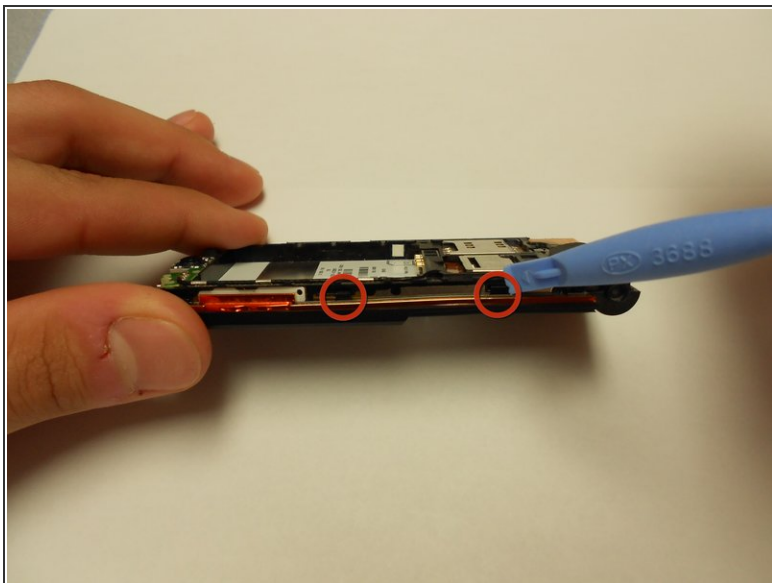
## Step 8



- Using a T5 screwdriver, remove the two screws by turning them counterclockwise.

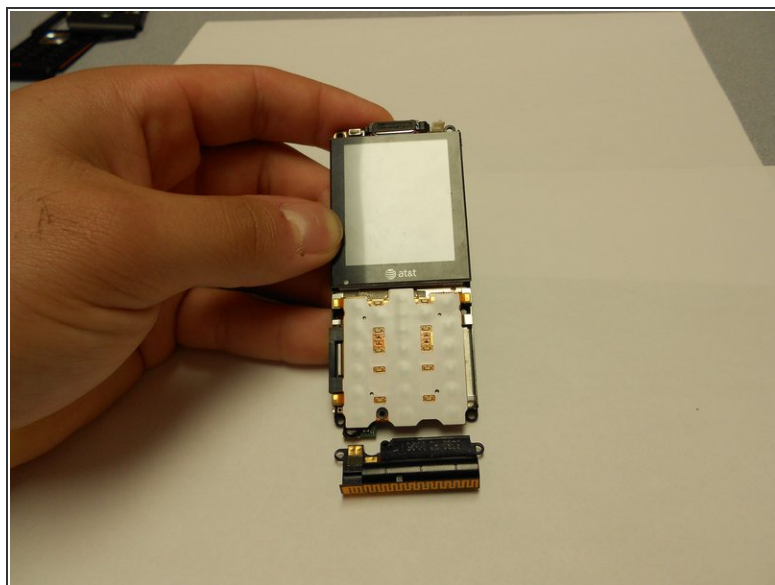
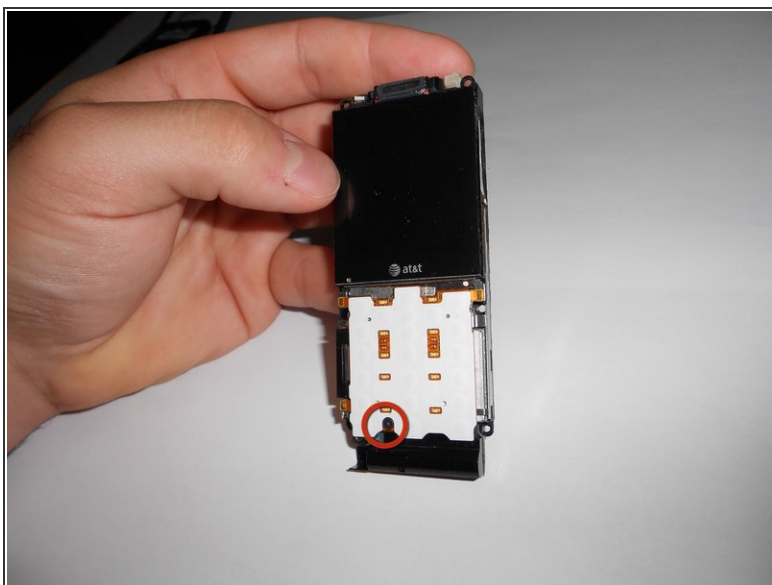


## Step 9



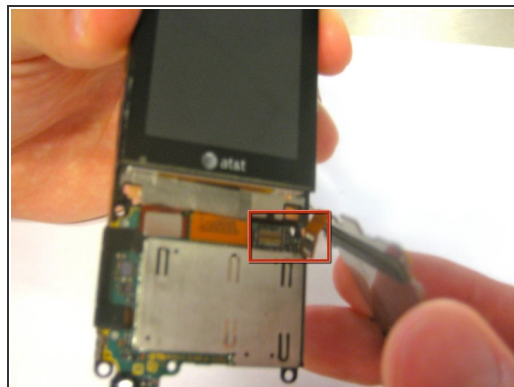
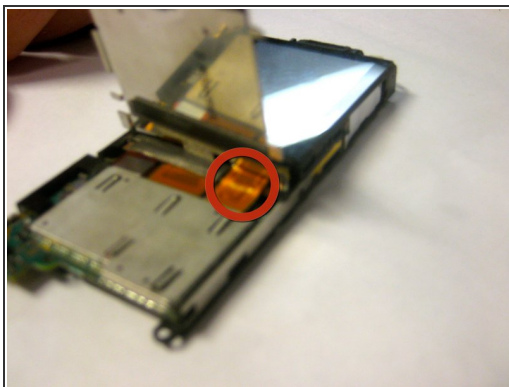
- Using an opening tool and a gentle outward motion, separate the front plate from the inner phone workings.

## Step 10



- Using a Phillips head screwdriver, remove the screw from the front number pad by turning it counterclockwise.
- Remove the speaker from the phone.

## Step 11 — Keypad



- Disconnect the ribbon cable from its connection until the keypad "pops" off.
- Remove the keypad from the phone.

To reassemble your device, follow these instructions in reverse order.