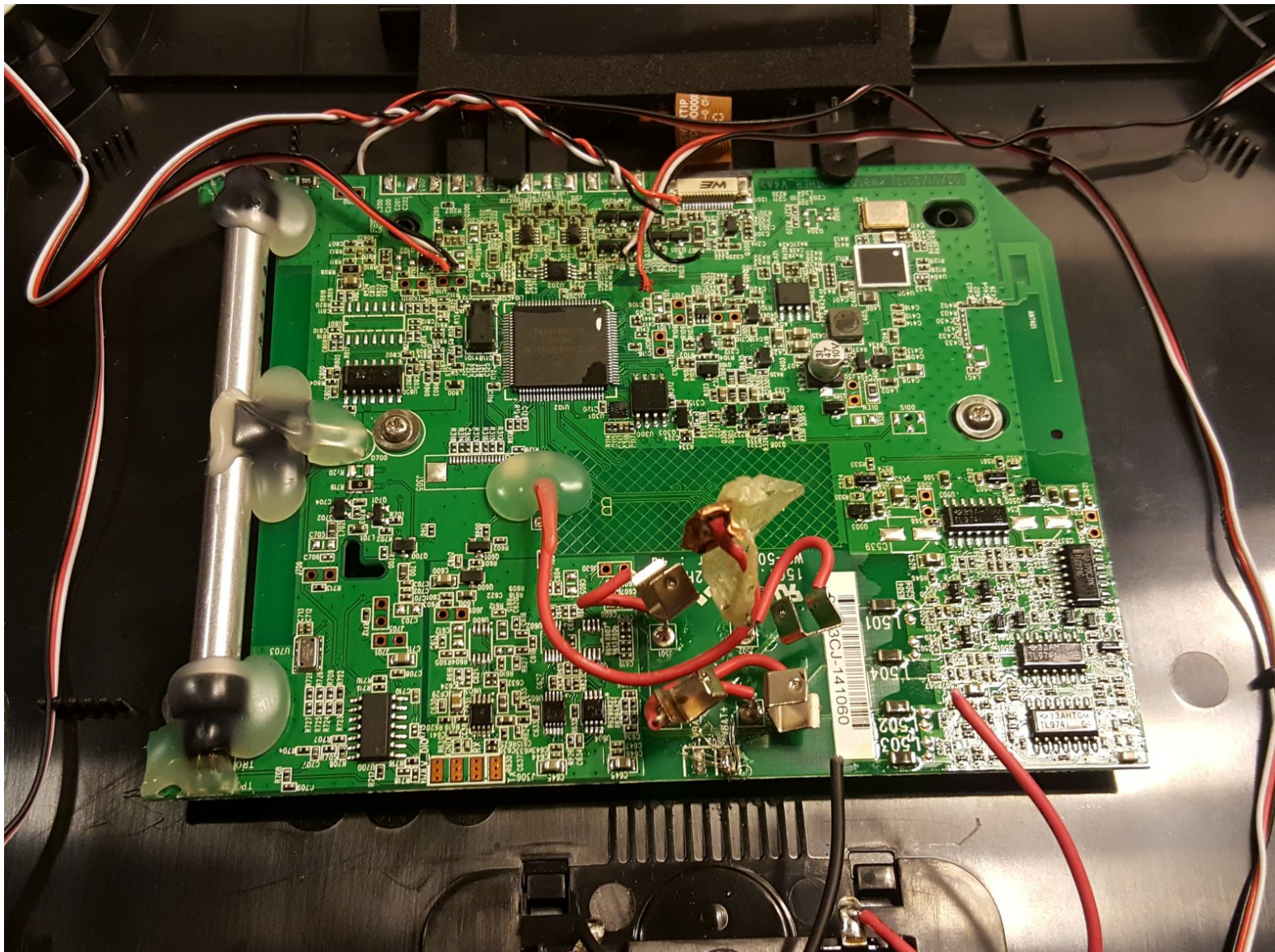




# Withings Smart Body Analyzer Motherboard Replacement

Replacing the motherboard in the Withings Smart Body Analyzer.

Written By: Ashley Dauphinee



---

## INTRODUCTION

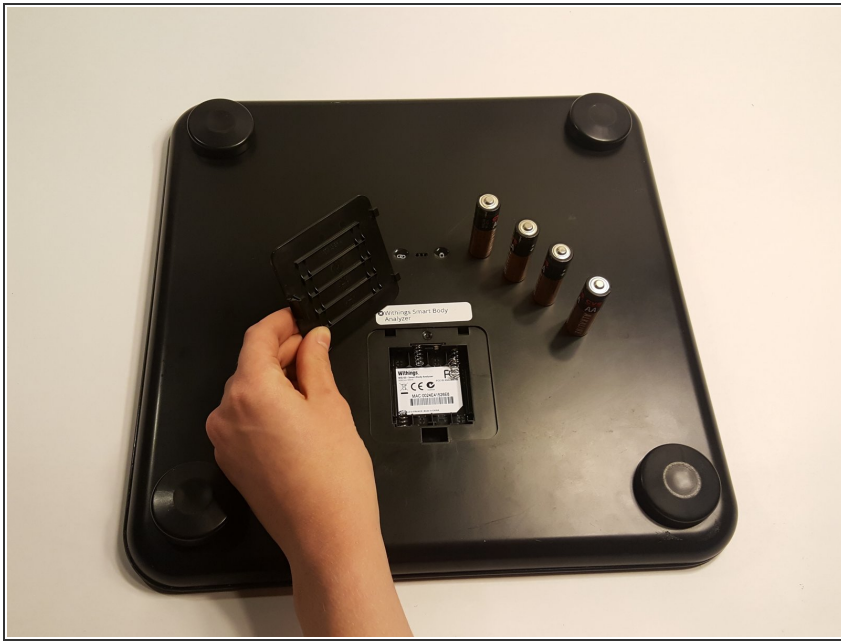
In this guide we will be reviewing how to remove the motherboard from the Withings Smart Body Analyzer WS-50. The motherboard is essentially the key component of the entire product. This is where the programs/ entire function of the product comes from. Fear not though with our easy to follow guide you'll be able to remove any malfunctioning motherboard in no time.



### TOOLS:

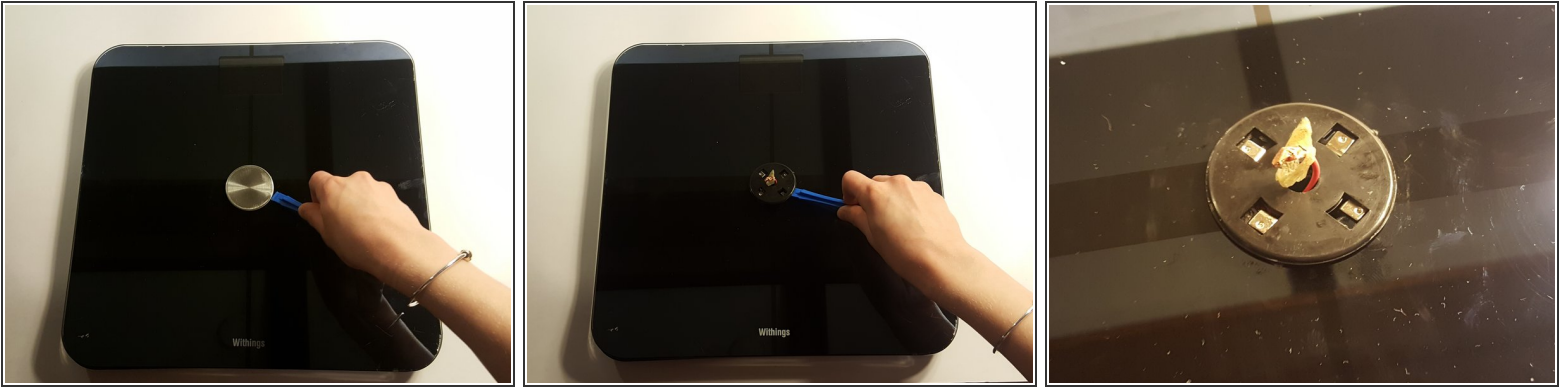
- [Spudger](#) (1)
  - [Phillips #1 Screwdriver](#) (1)
-

## Step 1 — Withings Smart Body Analyzer Disassembly



- Push the battery door
- Open the compartment
- Gently remove the batteries from their designated positions
- Place them aside, away from the reach of children

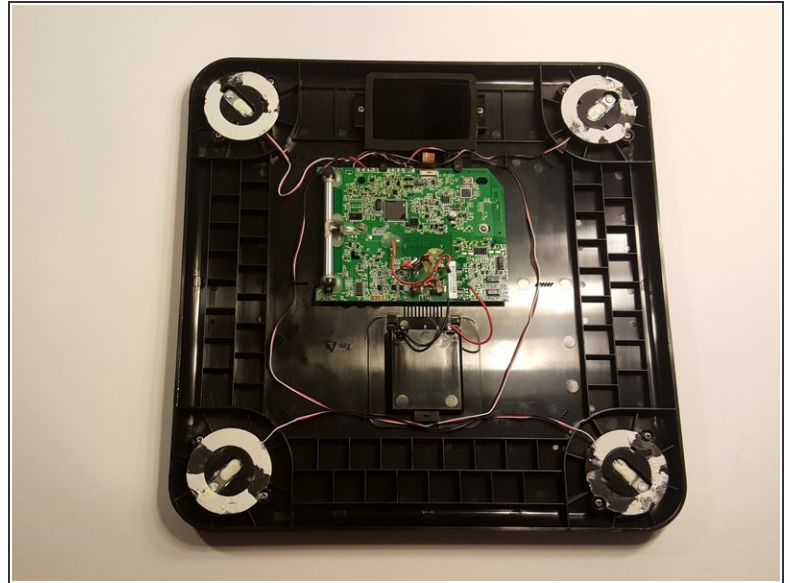
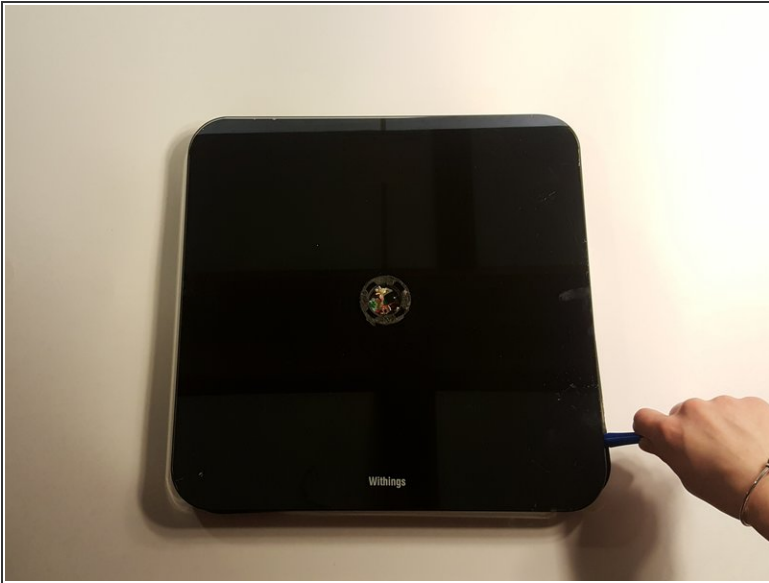
## Step 2



- With caution, insert the plastic opening tools in between the disk and the glass face
- It's a tight fit, so don't be afraid to apply a little bit of force
- As soon as you hear a faint crackling sound, that means that the adhesive is budging out of place
- Gently rotate the plastic spudger around the disk to get around the adhesive
- Gently lift the metal disk
- After the disk has been lifted, a wire and a small copper plate can be seen attached to the back of the disk
- Carefully remove the wire and plate by peeling back the adhesive sticker that has been positioned around them

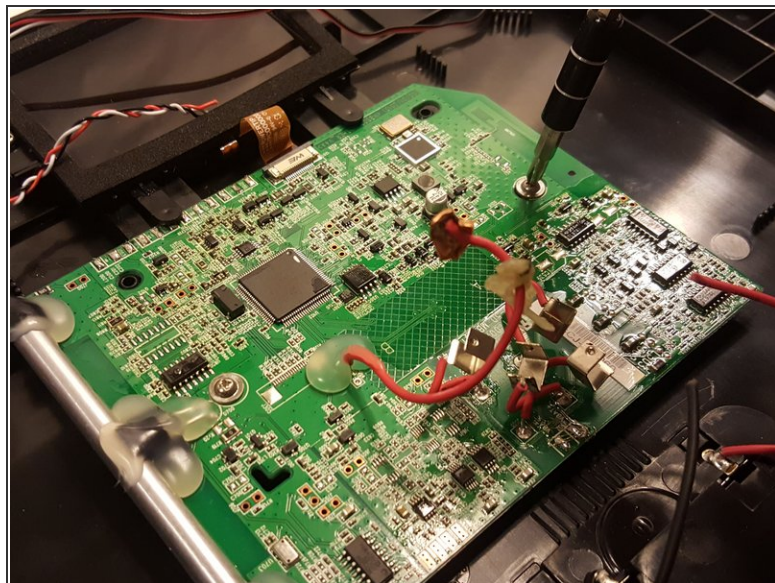
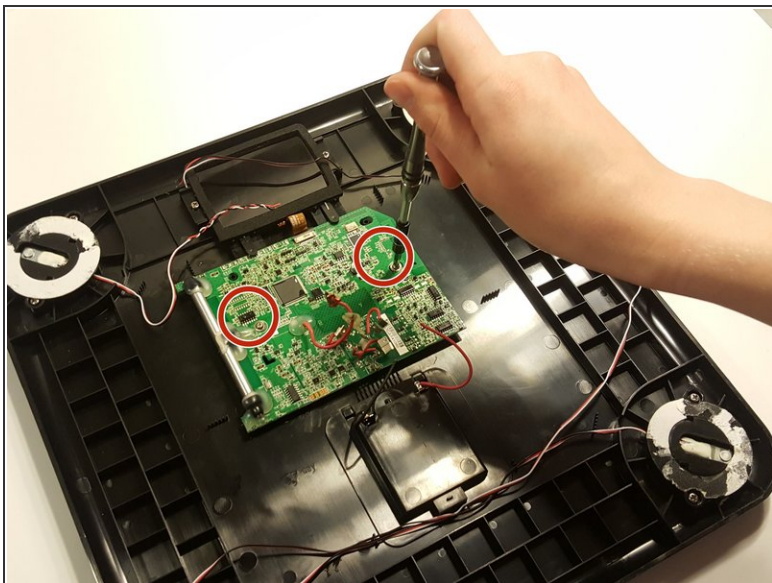


### Step 3



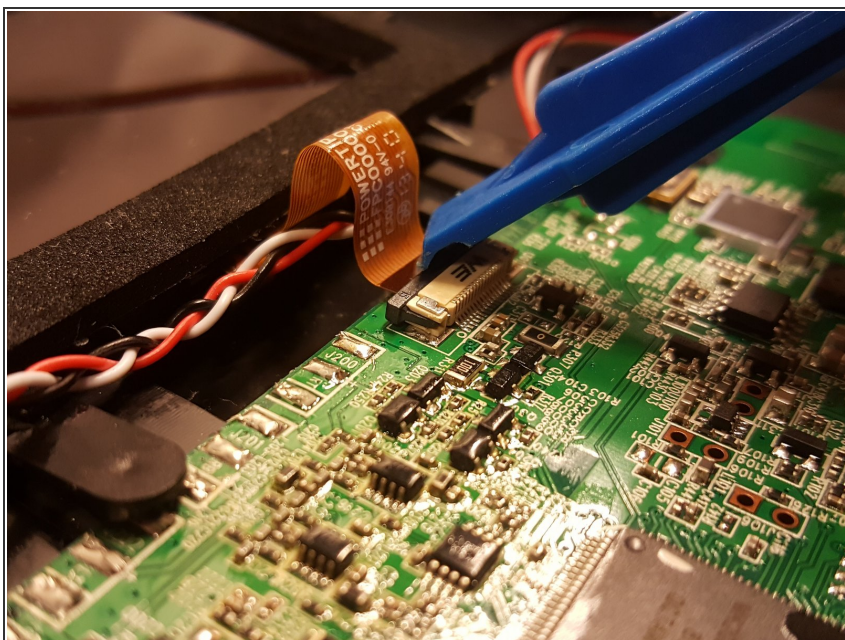
- After all the above steps have been completed, proceed by removing the glass face
- Carefully insert a plastic spudger in the small gap that exist in between the glass face and the plastic back
- Run the plastic spudger all around the scale to increase the gap size
- Place a plastic spudger in every corner, since the feet of the scale are also attached to the glass face using adhesive
- Carefully insert the metal spudger underneath the adhesive that is located underneath the feet of the scale, and gently keep pushing until the adhesive is out of place
- Repeat the above steps four times
- After all the adhesives has been removed, gently lift the glass face off

## Step 4 — Motherboard



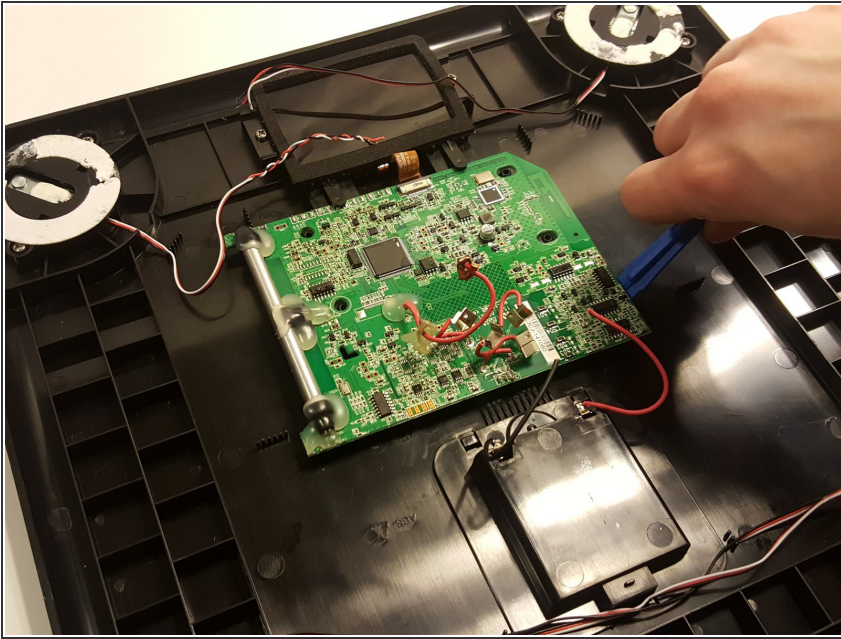
- Using the Phillips-head screwdriver, unscrew the two screws that are securing the motherboard in place

## Step 5



- Using a plastic spudger, disconnect the LCD display's ribbon cable from the motherboard.

## Step 6



- Once the two screws and the ribbon cable are detached, remove the motherboard.

To reassemble your device, follow these instructions in reverse order.