



# Wireless Card Replacement

If you are having difficulty using the wireless internet through your device, your Wi-Fi card will most likely have to be replaced. Use this guide to help!

Written By: Shahzeb



# INTRODUCTION

In this guide, you are going to remove and replace your malfunctioning Wi-Fi card.



## TOOLS:

- [Phillips #1 Screwdriver](#) (1)



## PARTS:

- [HP Pavilion DV7-4065dx Wireless WIFI Card](#) (1)

## Step 1 — Wireless Card



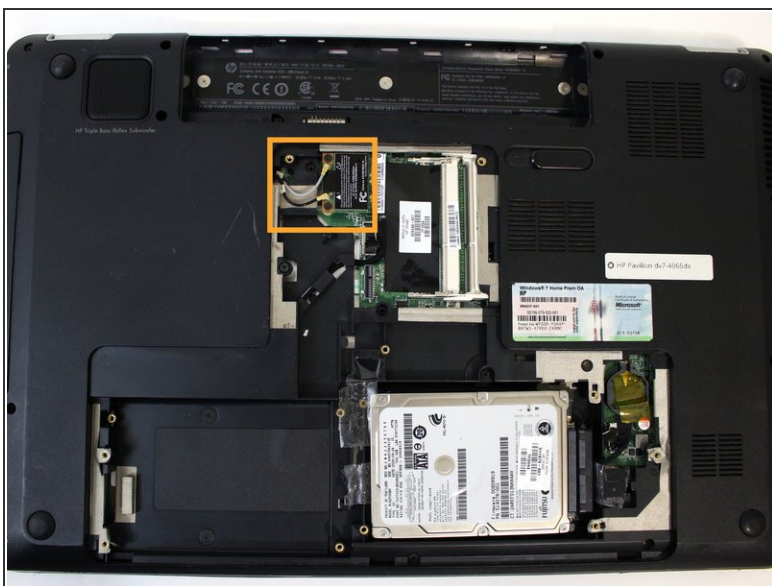
- Remove the battery from the laptop.

## Step 2



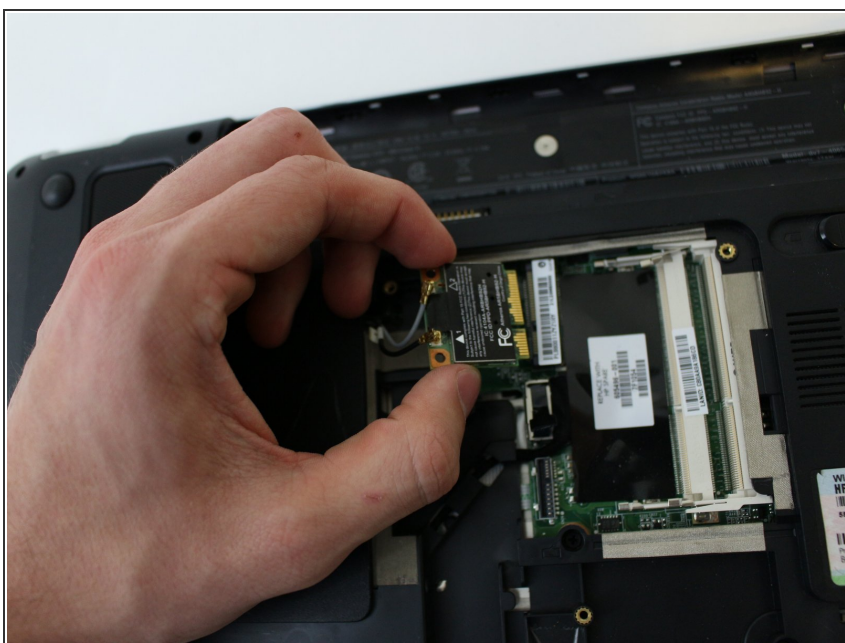
- Remove the five Philips #1 screws on the panel located underneath the laptop battery.
- Lift up the panel.

## Step 3



- Use a spudger to lift the two antenna connectors from the wireless card.
- Using a Philips #1 Screwdriver, remove the two screws holding the card in place.

## Step 4



- Gently lift the card upward and pull it out.

To reassemble your device, follow these instructions in reverse order.