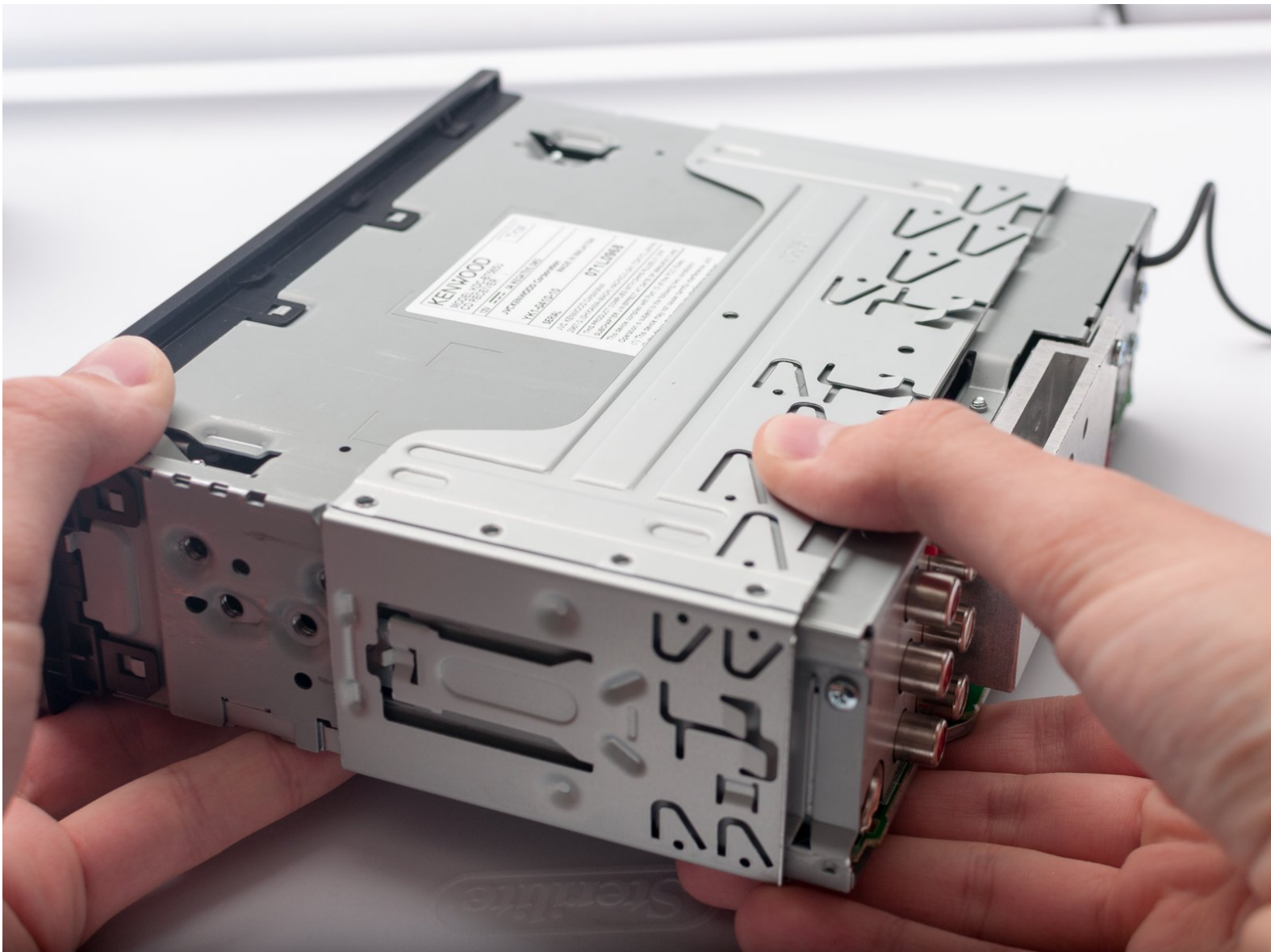




# Kenwood KDC-BT565U Metal Sleeve Replacement

This guide shows you how to replace the metal sleeve on the Kenwood KDC-BT565U. This acts mostly as a prerequisite guide.

Written By: Connor Finley



## INTRODUCTION

This guide shows you how to replace the metal sleeve on the Kenwood KDC-BT565U. This acts mostly as a prerequisite guide for replacing internal components such as the CD drive, however, the metal sleeve is sold as a replaceable part on the Kenwood website (link in the parts section).

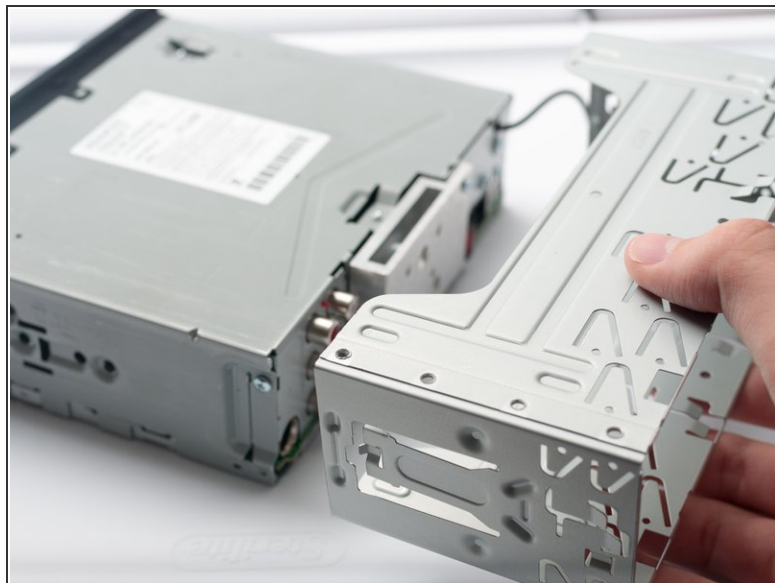
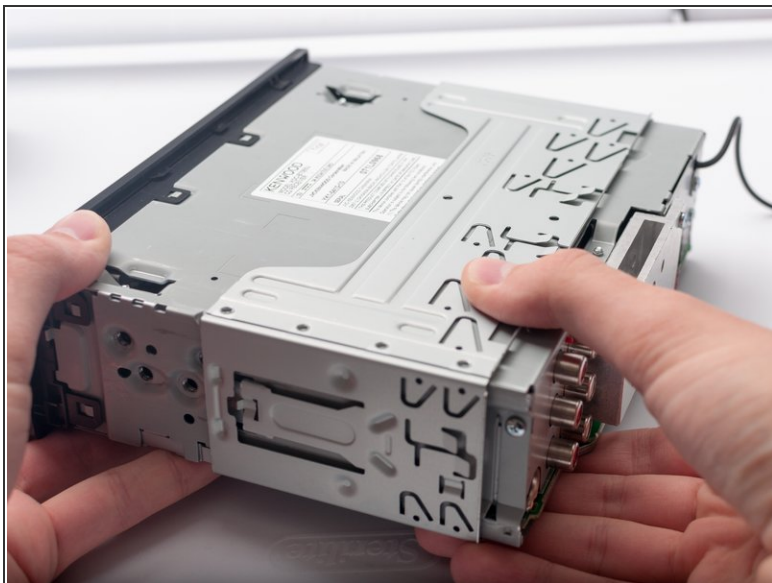
**Note:** this requires the KDC-BT565U to be separated from the car. If the unit is currently in an automobile, it needs to be unmounted. This may require specialist assistance.



### PARTS:

- [Kenwood KDC-BT565U Replacement Metal Sleeve](#) (1)

## Step 1 — Metal Sleeve



- Grasp the outer metal sleeve with one hand and the front of the unit with the other.
- Slide the sleeve back until it comes off the unit.

To reassemble your device, follow these instructions in reverse order.