



Garmin Nuvi 200w Speaker Replacement

How to replace the speaker in a Garmin Nuvi 200w.

Written By: Nick Scharr



INTRODUCTION

The speaker of the Garmin Nuvi 200W is prone to water damage and may fail over time. Replacing the speaker can make the Nuvi 200W sound new again, at much less cost!

It is important to note, however, that the case and it's internals require very specific screws, that are small and easy to lose. It is recommended that a magnet or tap is used to secure screws after removal. It is also important to gently remove the back cover, as it will be attached to other interior elements. This connection is sensitive and should be treated as such until the guide shows proper disconnection of this particular cable.

Only basic tools are required, such as screw drivers, and opening tools.



TOOLS:

- [T5 Torx Screwdriver](#) (1)
 - [iFixit Opening Tools](#) (1)
 - [Phillips #0 Screwdriver](#) (1)
 - [Heavy-Duty Spudger](#) (1)
-

Step 1 — Rear Cover



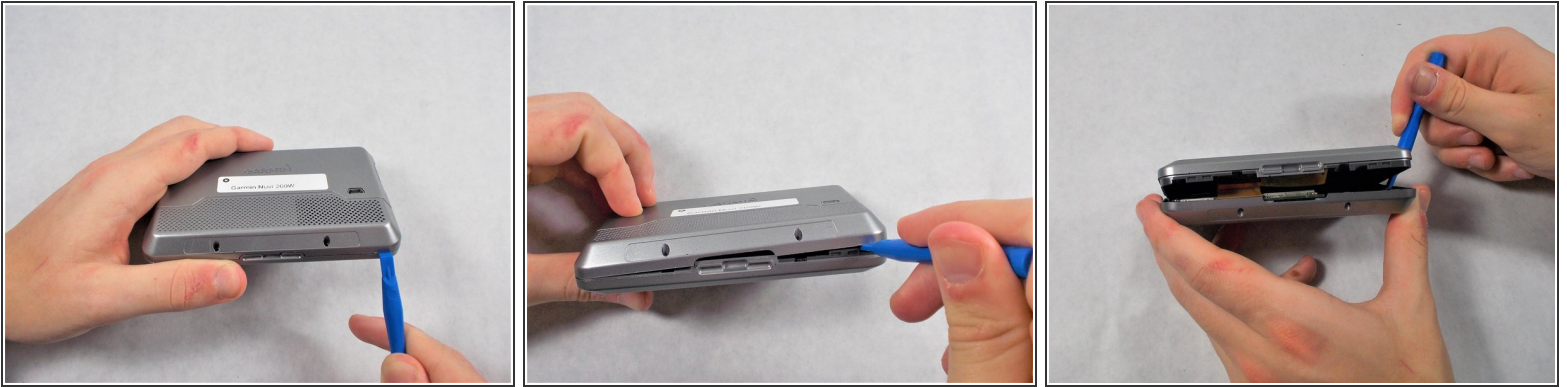
- Peel off the sticker in order to find the two Torx T5 screws.

Step 2




- Remove the two 4mm T5 Torx screws.

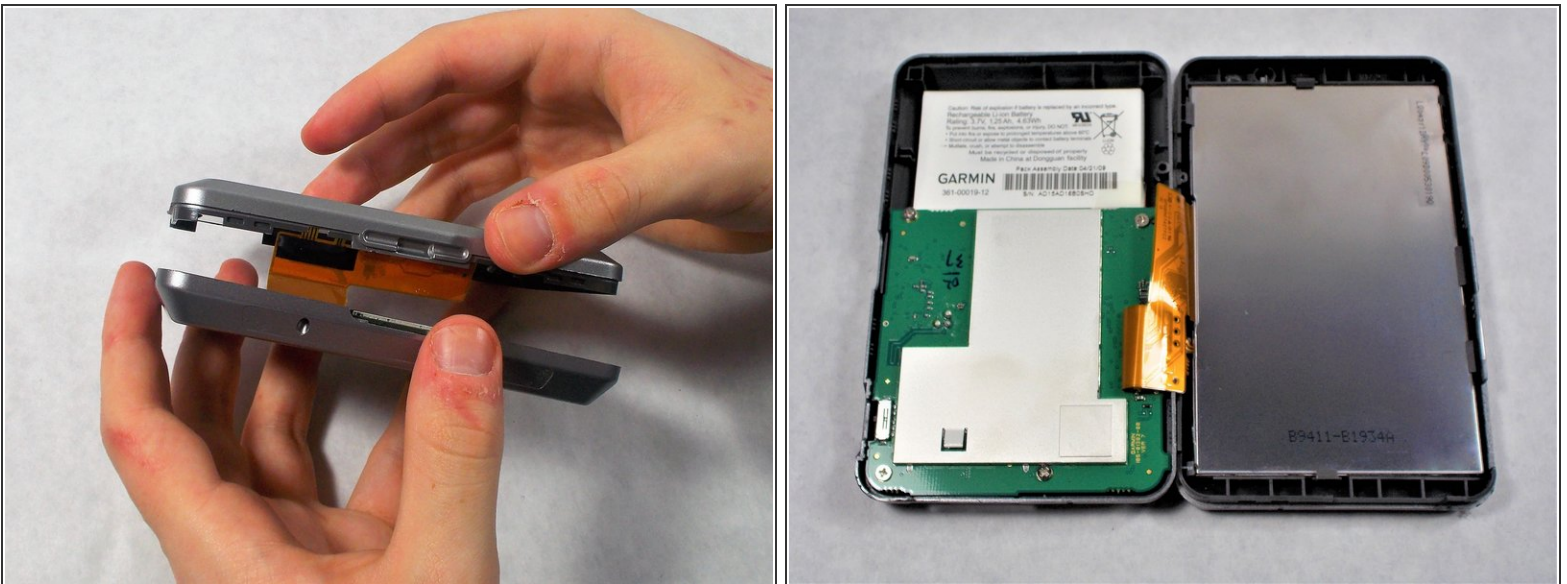
Step 3




- Carefully, using your plastic opening tools find the crease which separates the front and rear covers.
- Once you have a little gap, work it around the whole device with the tool to get separation.

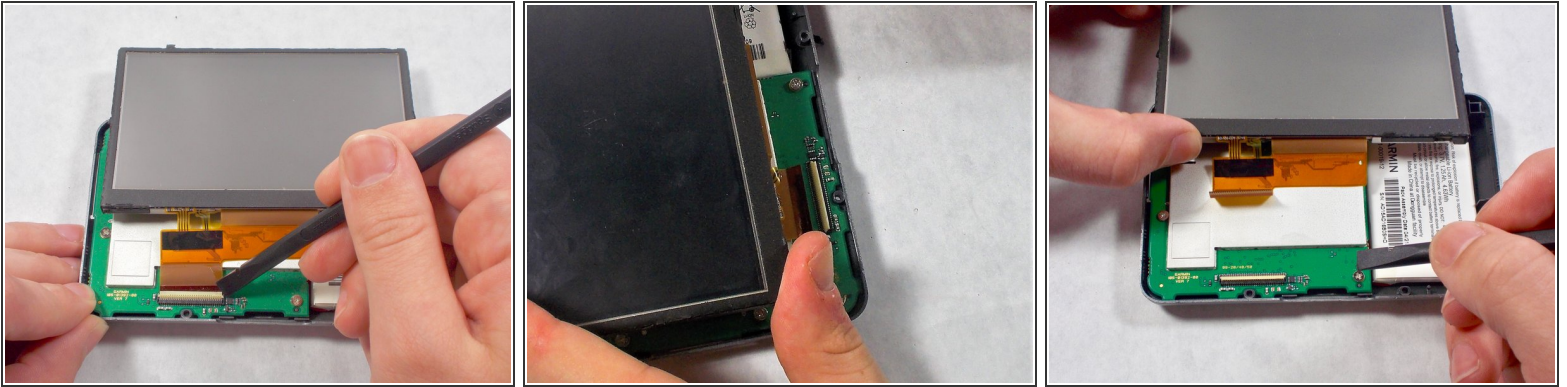
 There is a ribbon cable between the two covers, be very careful when taking them apart to not damage the ribbon.

Step 4



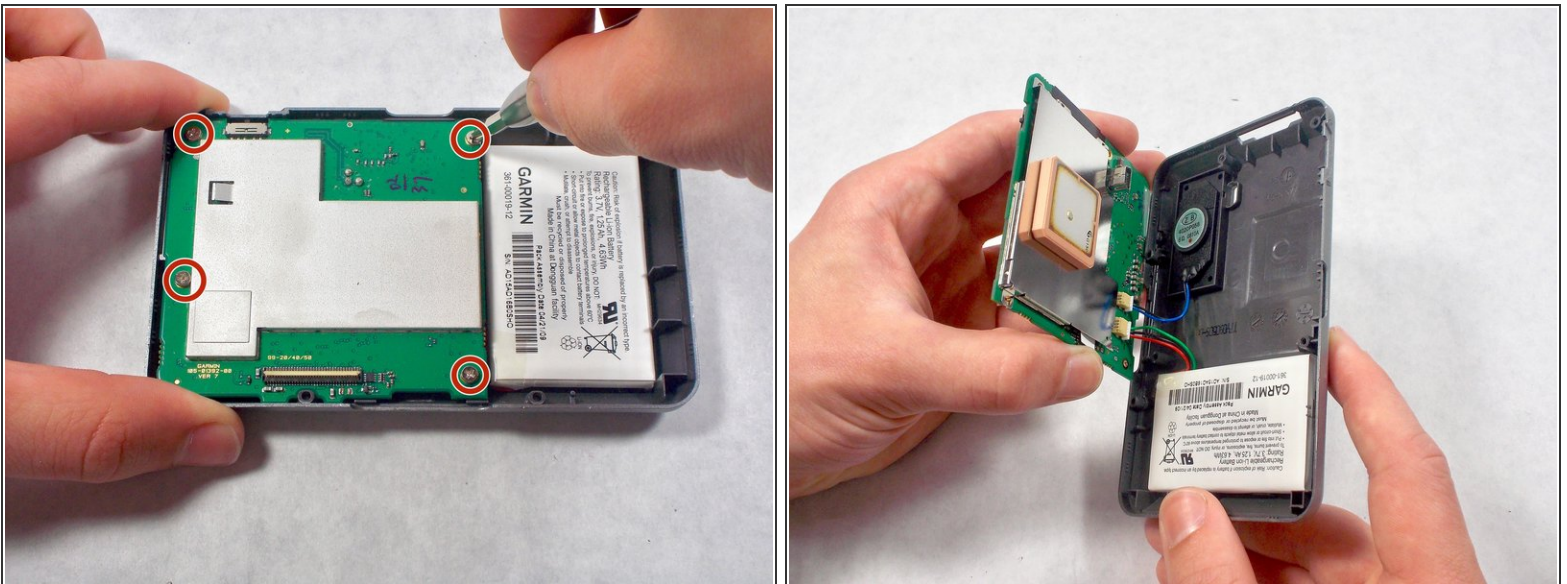
 After the case front and rear are separated, carefully lay the two sides down without disconnecting or damaging the orange ribbon cable.

Step 5 — Display Assembly



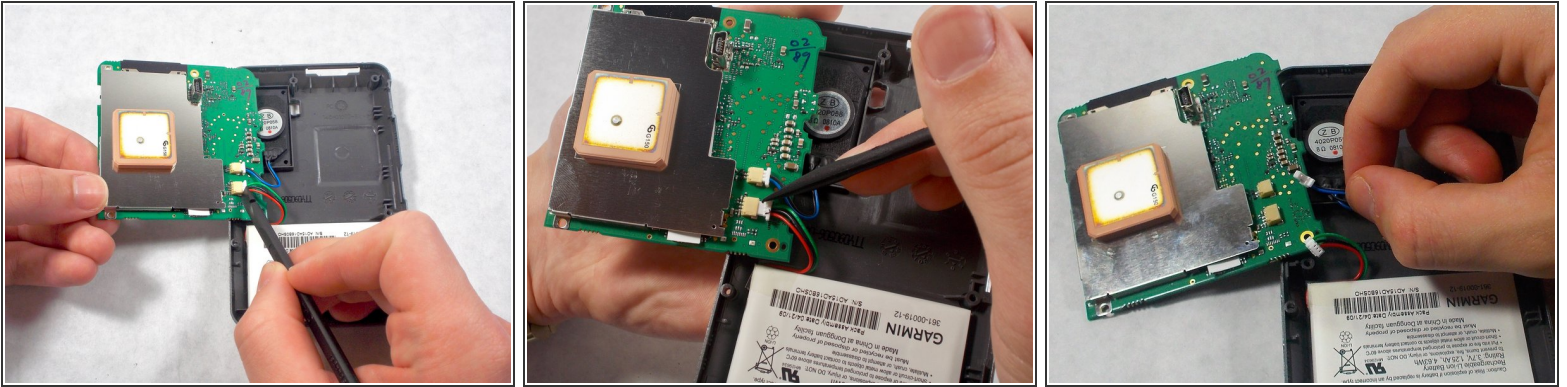
- Carefully use the black spudger to lift the white retaining clamp on the display cable ZIF connector.
⚠ Make sure to lift up on the white retaining clamp and not the ZIF connector itself.
- Slide the orange ribbon cable away from the ZIF connector.

Step 6 — Motherboard



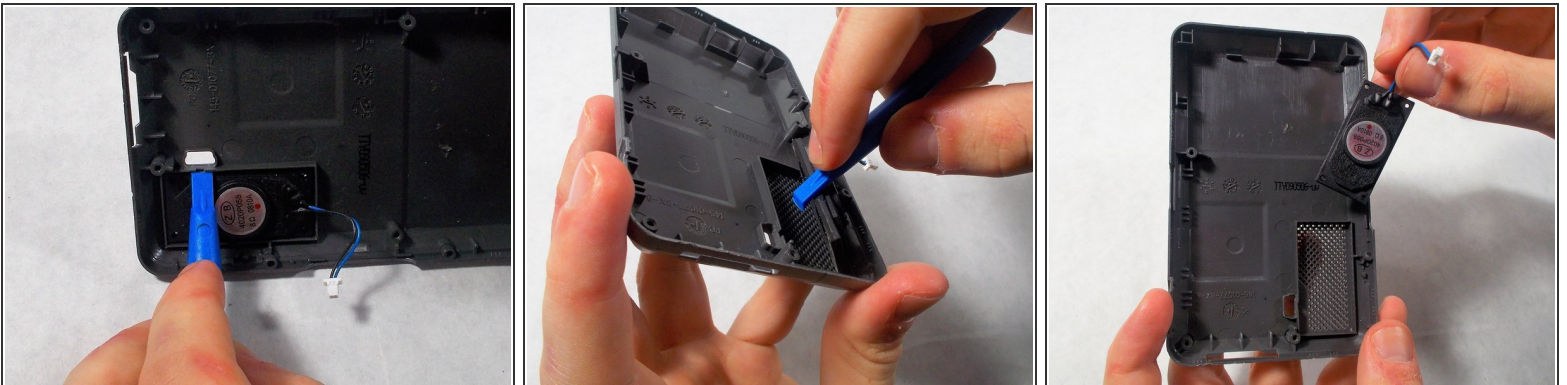
- Using a screw driver, unscrew the four 2mm screws holding the motherboard in place.
- ⚠ Gently lift the motherboard away from the rear cover. Take care to not damage the wires or ports that link the motherboard to other components.

Step 7



- Using the black spudger, apply pressure to nudge the plug out of its port.
- Repeat this process for both ports.

Step 8 — Speaker



- Using the plastic opening tool, carefully apply pressure to lift the speaker up from the back cover.

⚠ There may be some type of adhesive around the edges of the speaker.

To reassemble your device, follow these instructions in reverse order.