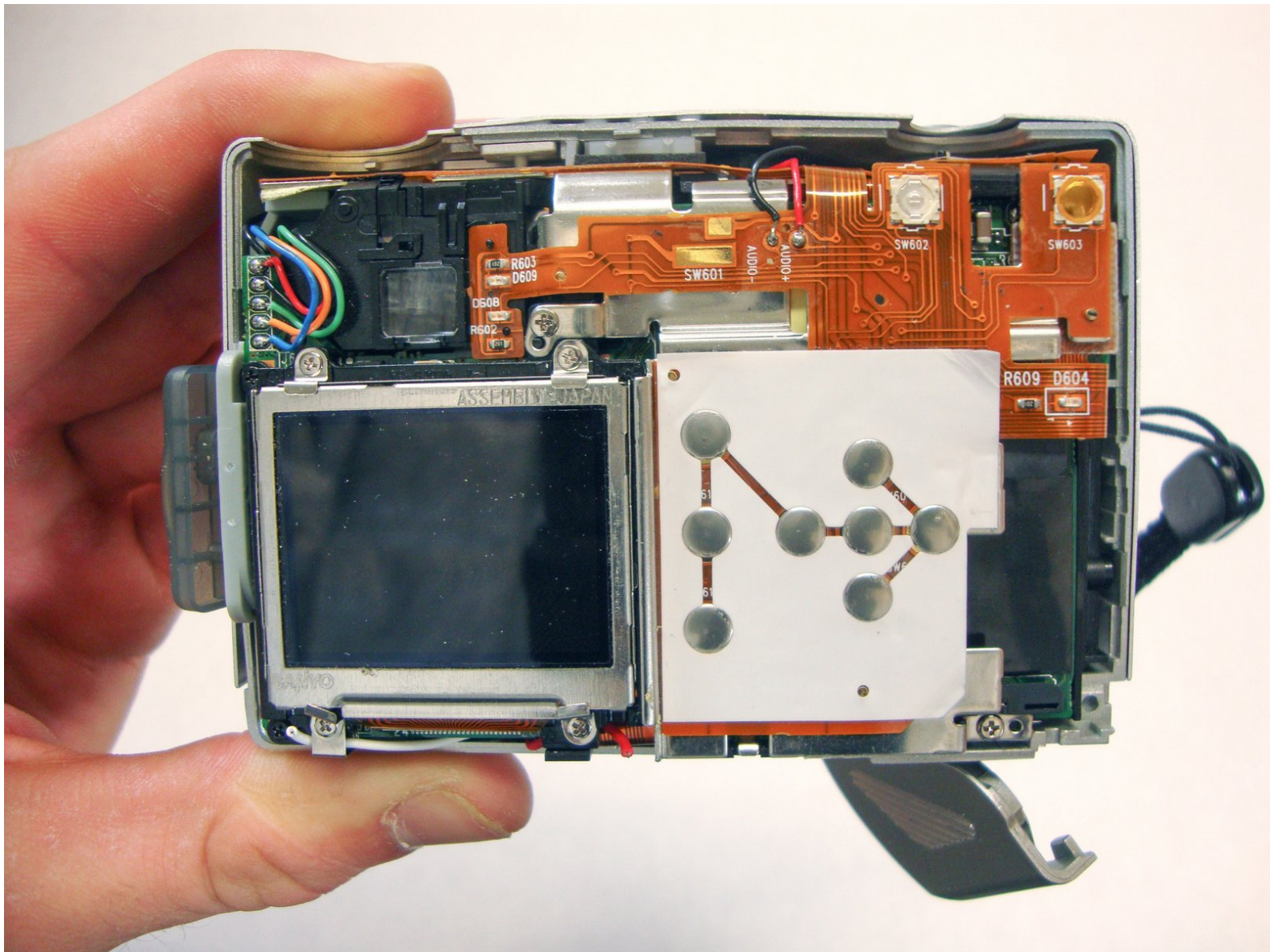




HP Photosmart 935 LCD Screen Replacement

The purpose of this guide is to teach reader to...

Written By: Nick Oleskowicz



INTRODUCTION

The purpose of this guide is to teach reader to install a new LCD screen. If the current LCD screen is broken or cracked, this guide will help the reader to replace it with a new one.

TOOLS:

- [Phillips #00 Screwdriver](#) (1)
-

Step 1 — Batteries



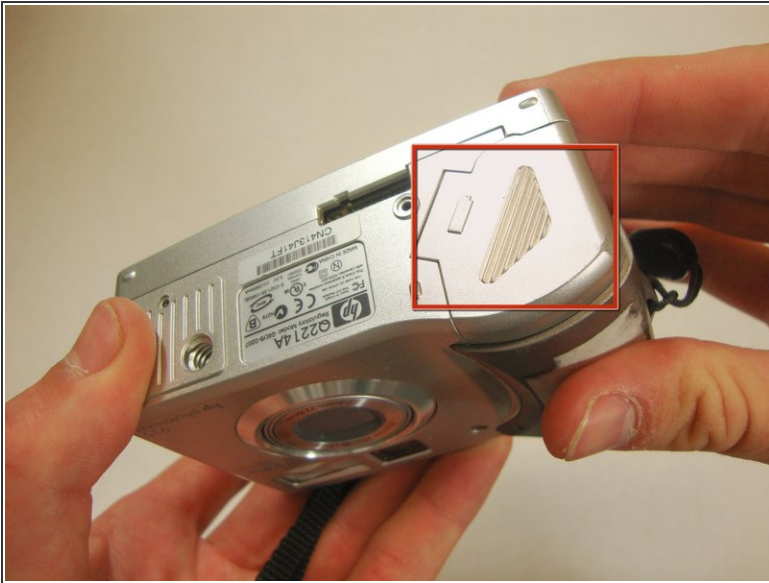
- Flip the camera over so the bottom of the camera is facing you.

Step 2



- Turn the mode dial to the OFF position.

Step 3



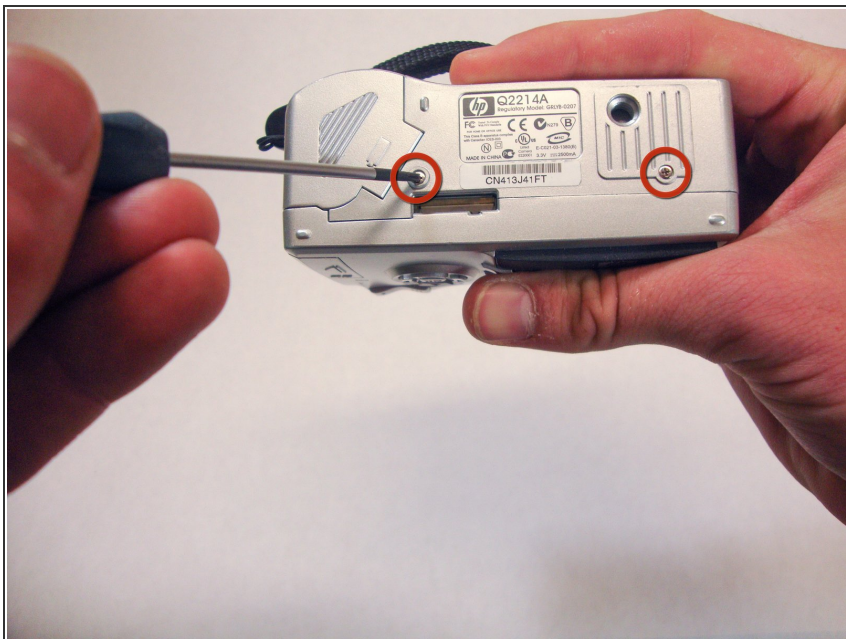
- Slide the bottom cover in the direction of the arrow to open it.

Step 4



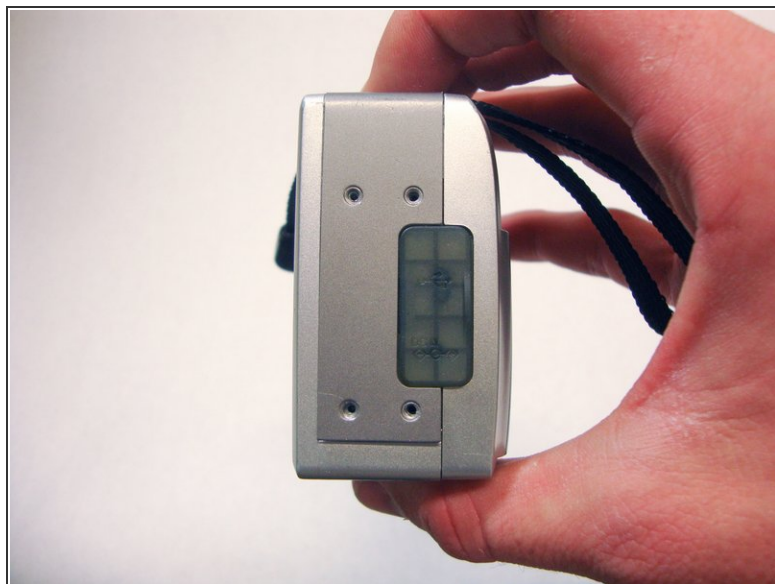
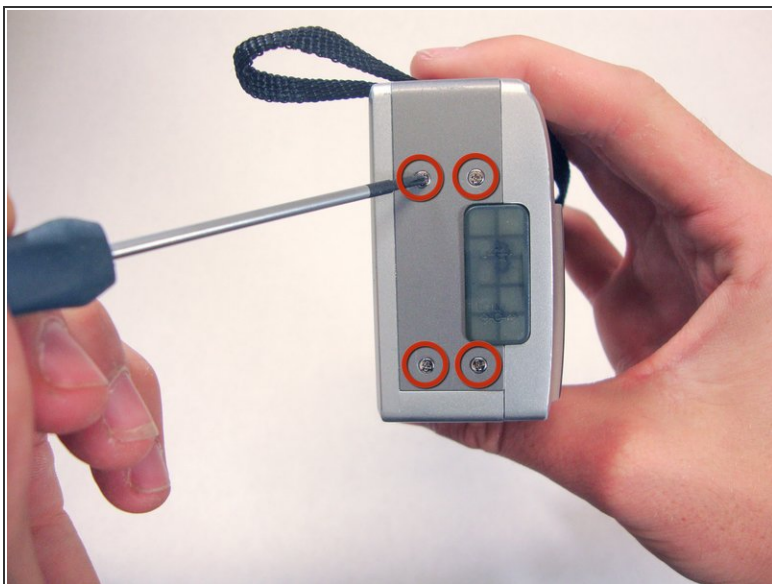
- Pull out the batteries.

Step 5 — Plastic Casing



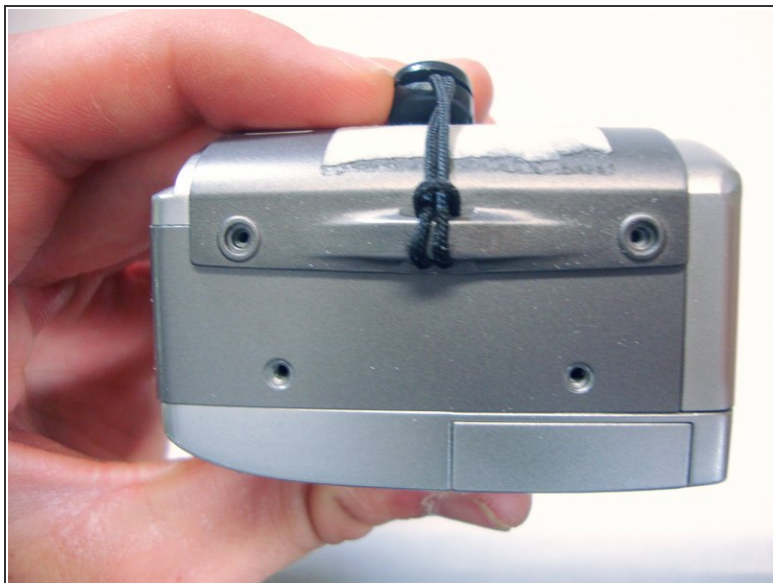
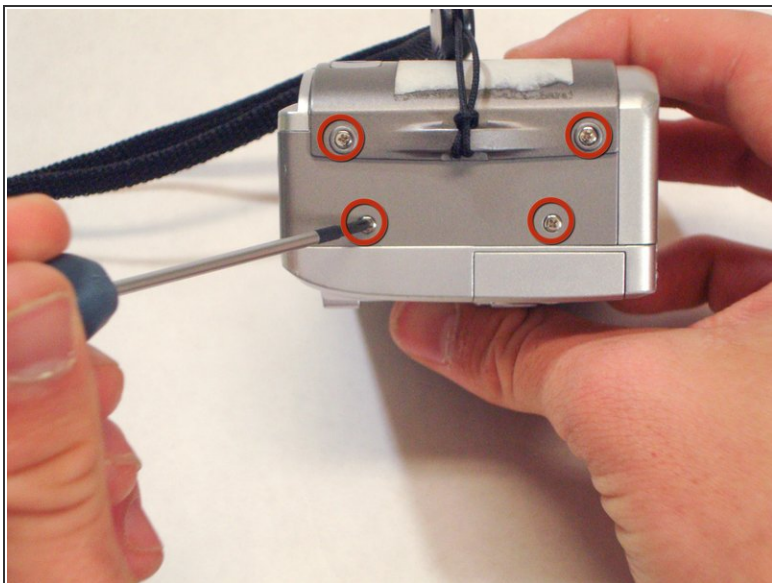
- Use a Phillips #00 screwdriver to remove the two 4.7 mm screws in the bottom of the plastic casing.

Step 6



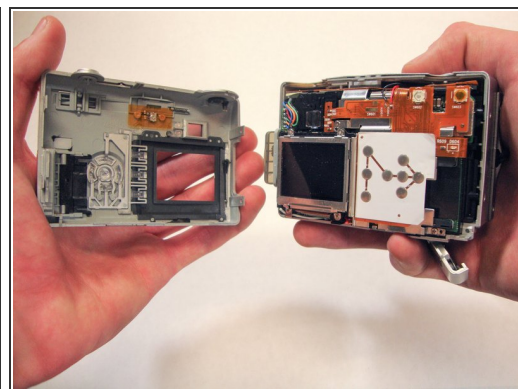
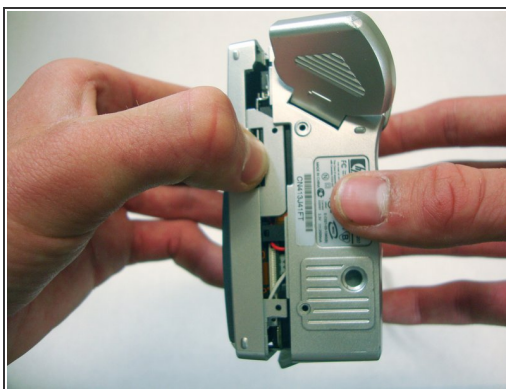
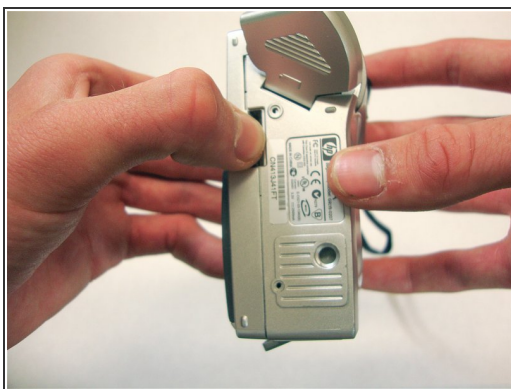
- Remove the four 4.7 mm screws on the left side of the camera.

Step 7



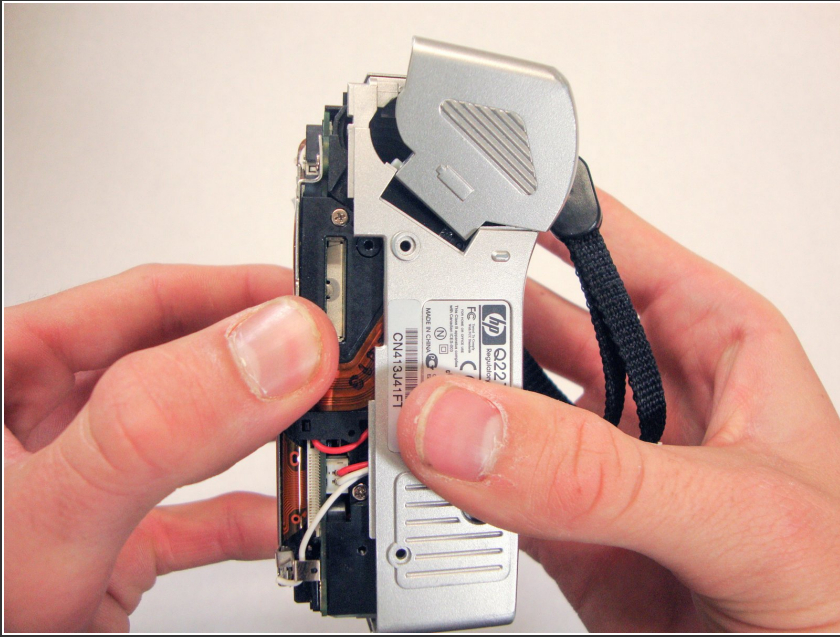
- Remove the four 4.7 mm screws on the opposite side of the camera.

Step 8



- Use your thumbs to pry the case apart.
- ⓘ It is easiest to pry the case apart if you start at the bottom.
- ⓘ The case should come apart with minimal effort. If it doesn't, you can use a spudger or plastic opening tool to pry it open.

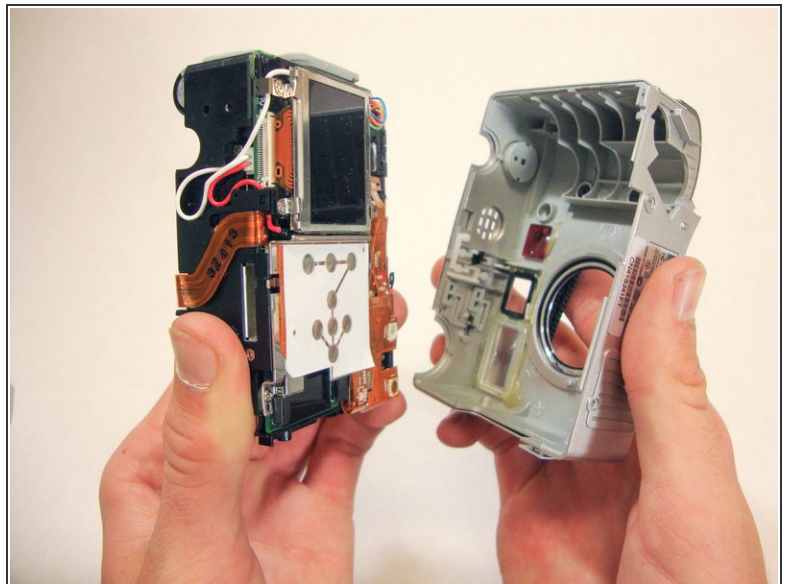
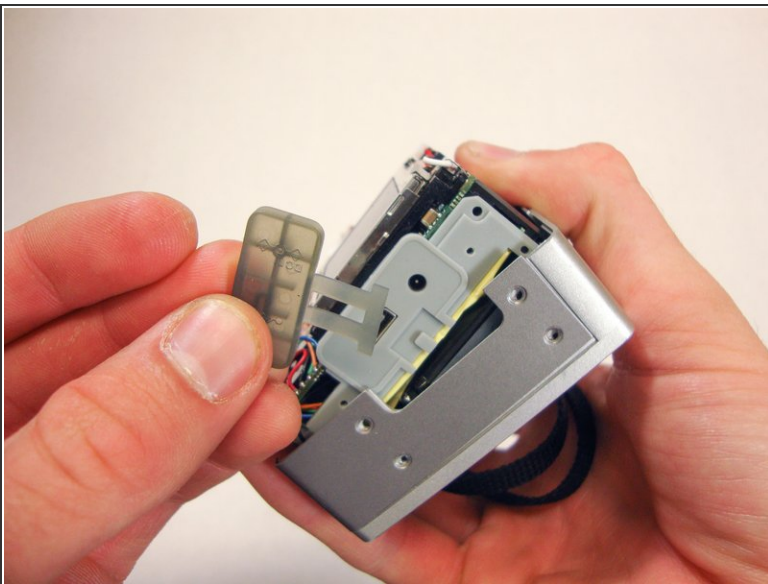
Step 9



⚠ This step requires a significant amount of force.

- Pull the bottom half of the inner camera out of the case by half an inch. This may be difficult.

Step 10

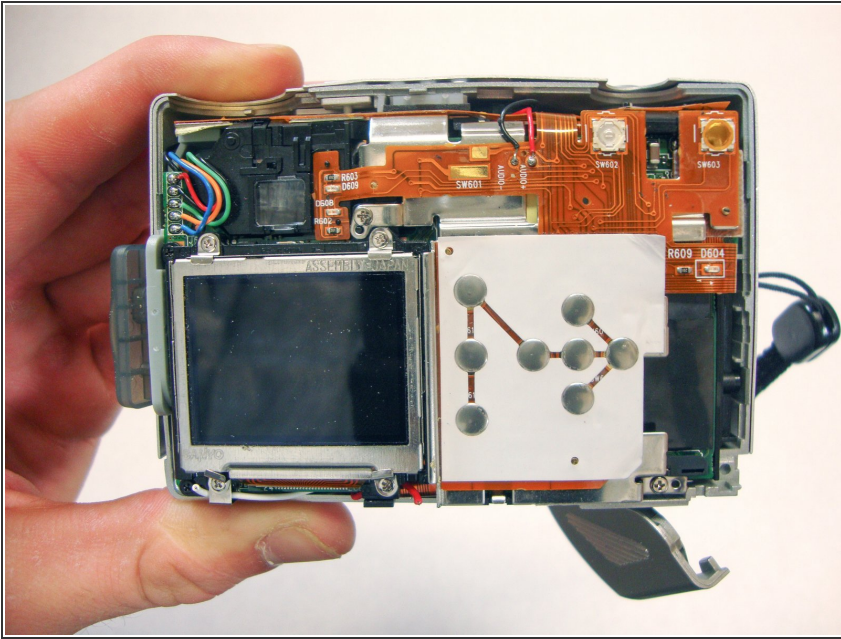


⚠ While pulling the camera out of the case, note the small soft plastic cover on the side. This cover will detach from the rest of the device.

- Once the bottom of the inner camera is pulled out, pull the device out completely.
- i** Use a firm grasp when removing the device from the case for stability and control.

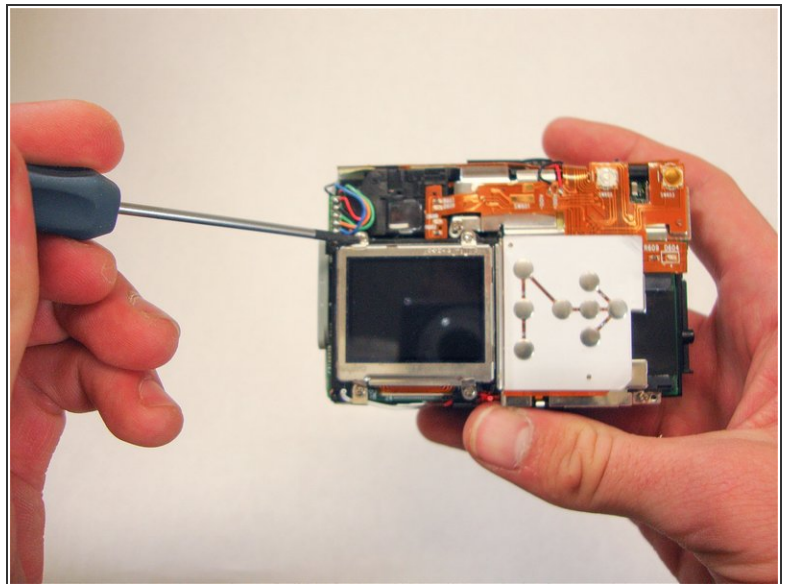
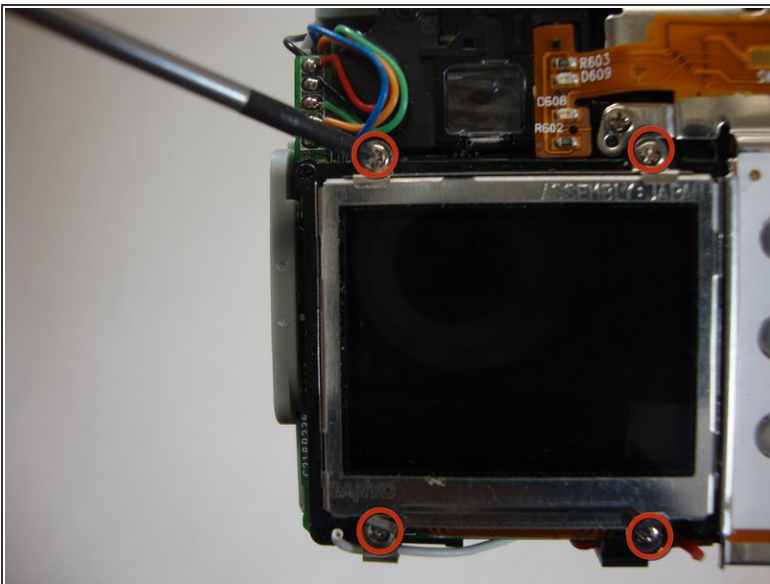
This document was generated on 2022-12-18 11:26:42 AM (MST).

Step 11 — LCD Screen



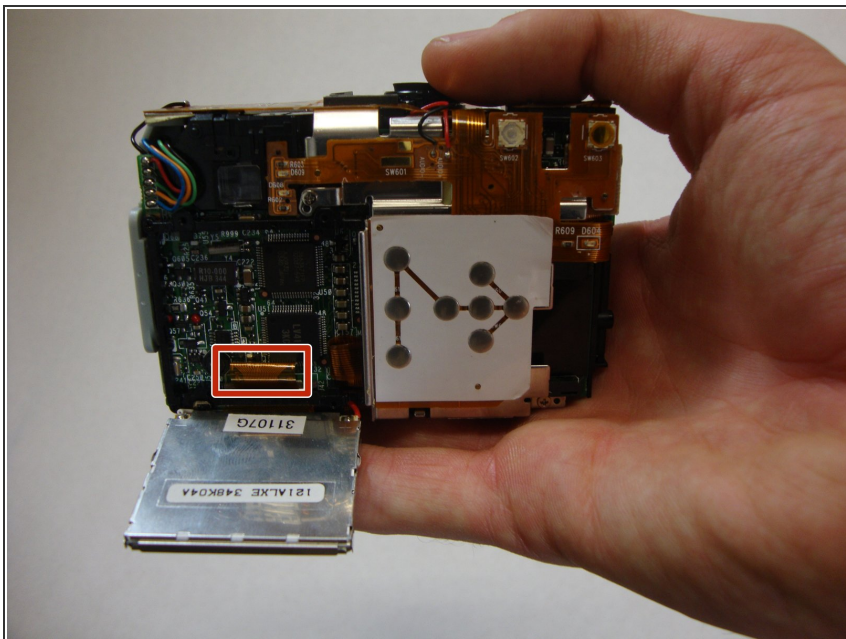
- Orient the camera so that the LCD screen is facing you.
- ❗ If case is still on, remove it by following the Plastic Casing Installation Guide found in the previous steps.
- ❗ Removing the casing completely is crucial to completing this guide.

Step 12



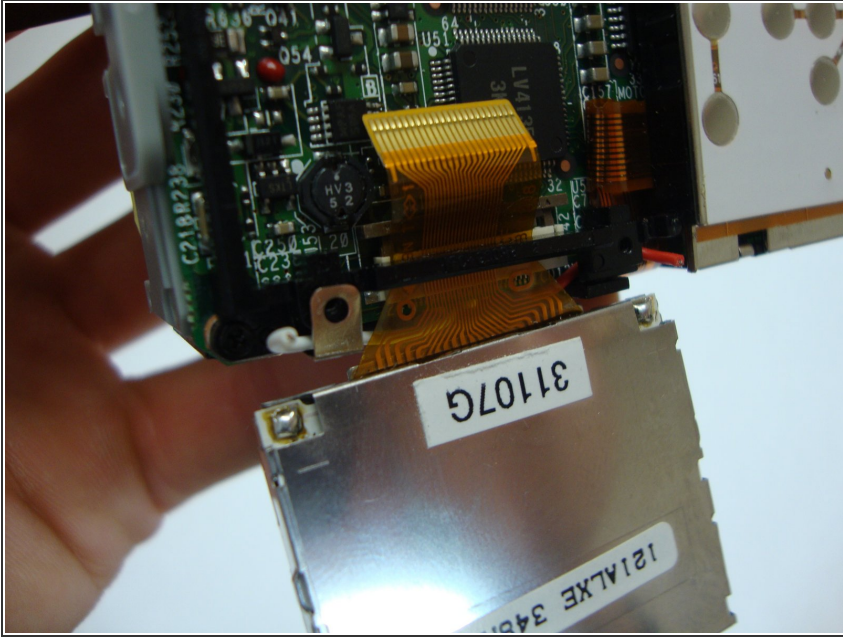
- Using a Phillips #00 remove the four 4.40 mm screws that secure the LCD screen to the frame.

Step 13



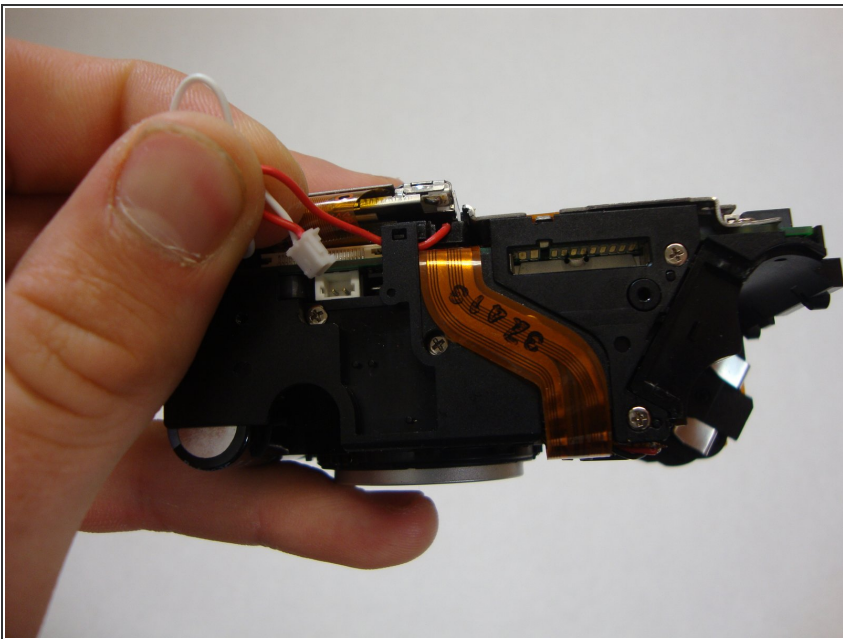
- Allow the LCD screen to flip down. This will expose the electric strip that connects the screen to the camera.

Step 14



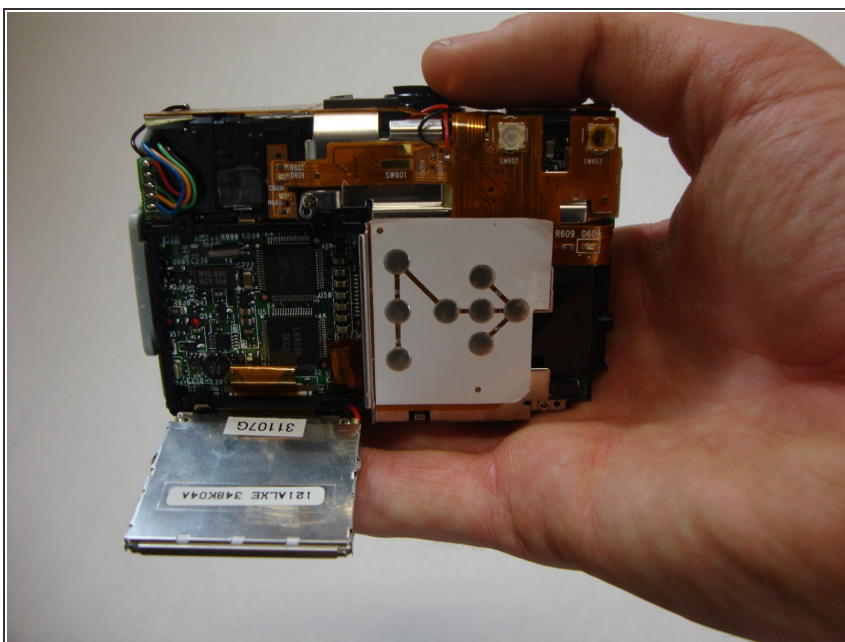
- ① Look for where the yellow electric strip is attached to the camera. You will find a plastic grey bar and a white base holding this strip in place.
- Push the grey bar away from the white base. This will release the yellow electric strip and free the LCD screen from the camera.

Step 15



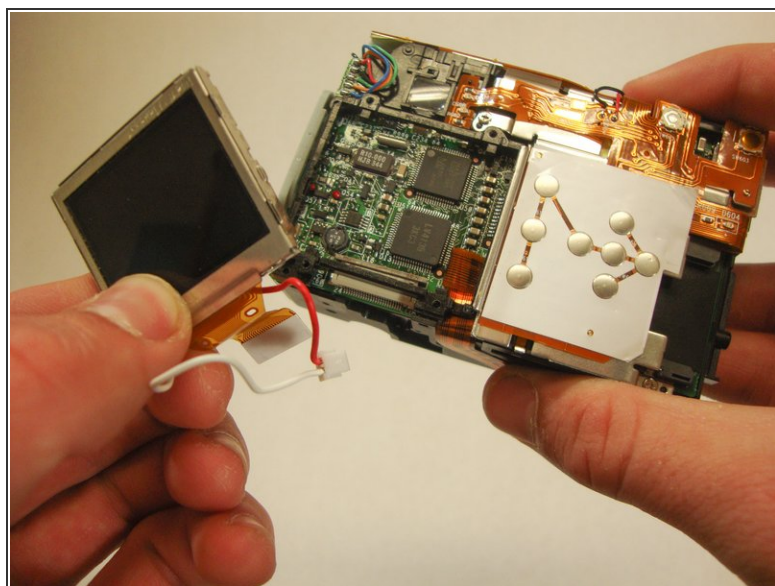
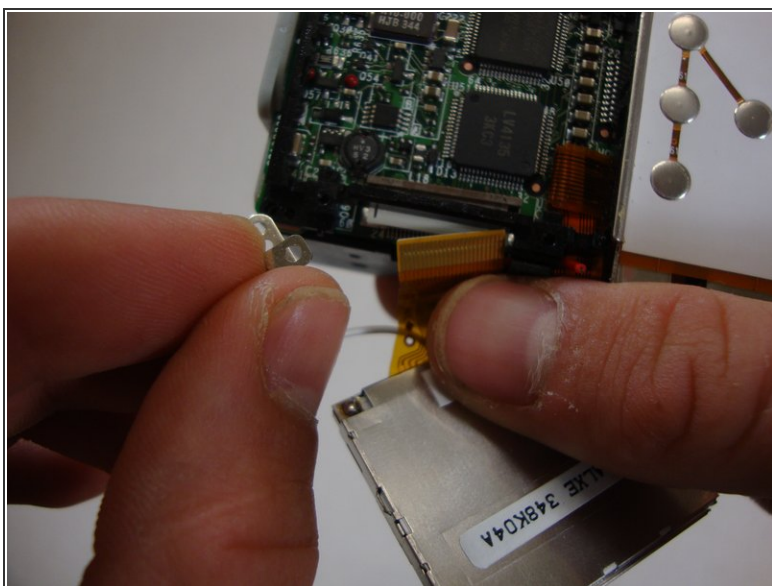
- Unplug the connected red and white wires. They will come out with the small white casing.

Step 16



- Flip camera so that the lens is facing away from you. You should be looking at the LCD screen.

Step 17



- Remove the bottom left LCD mounting frame screw. The screen should come loose after the screw is removed.
- Remove the LCD screen from the camera. Make sure that the electric strip comes out with screen.

To reassemble your device, follow these instructions in reverse order.