



# Samsung Galaxy A5 Battery Replacement

This guide shows how to replace the battery in your Samsung Galaxy A5.

Written By: Tobias Isakeit



## INTRODUCTION

If your Galaxy A5 won't hold a charge you can use this guide to replace the worn-out battery.

If your battery is swollen, [take appropriate precautions](#).

This guide involves removing the display and the mid frame. You may need new adhesive to attach the battery and the display to the phone.

**Before disassembling your phone, discharge the battery below 25%. The battery can catch fire and/or explode if accidentally punctured, but the chances of that happening are much lower if discharged.**



### TOOLS:

- [iSlack](#) (1)
- [iOpener](#) (1)
- [Suction Handle](#) (1)
- [Tweezers](#) (1)
- [iFixit Opening Picks set of 6](#) (1)
- [Spudger](#) (1)
- [SIM Card Eject Tool](#) (1)
- [Phillips #00 Screwdriver](#) (1)



### PARTS:

- [Galaxy A5 \(2015\) Replacement Battery](#) (1)
- [Tesa 61395 Tape](#) (1)

## Step 1 — Display



- Switch off your phone.
  - ⓘ If your screen is cracked you want to cover the front panel with tape to protect yourself from glass shards and get a better grip to lift it.
- [Use an iOpener](#) to soften the glue on the edge of the display. Concentrate on the sides first and then on the bottom part.
- With an iSlack or a suction handle you can lift the display a little bit to get in the gap with an opening pick.
  - ⓘ The phone screen is composed of two layers (glass and display). Ensure that you are removing both layers and not splitting the two layers.
- ⚠ In the beginning just insert the tip of the opening pick and slide along the side to loosen the glue. Leave the top and bottom alone for now.

## Step 2



- When the glue is loosened enough on the side you can lift the display a little bit more to get underneath the display with an opening pick.
- Take a second opening pick and work your way around the bottom edge.
- ⚠ The software buttons in the lower left and right corners of the screen have ribbon cables that are glued to the display. Be very careful that your pick cuts between the screen and buttons and does not cut these wires.
- Repeat the last step and this one on the other side.

## Step 3



- Grab the [iOpener](#) once again to heat up the bottom and top part to further soften the glue.
- Now you will be able to move the picks at the bottom closer to the home button and eventually open the display towards the top.
- ⚠ Don't open the display all the way. It is still connected to the motherboard.
- 🔧 The home button may stick to the display assembly or remain on the midframe. Keep an eye on it if your new display does not come with one already attached.

## Step 4



- In the top right corner you can find the connector of the display. Use a spudger to unplug it.
- Now you can remove the display.

## Step 5 — Battery



- Take the home button out and put it aside.
- Remove the SD card tray and the SIM card tray.
- Remove the twelve Phillips #00 screws on the midframe.

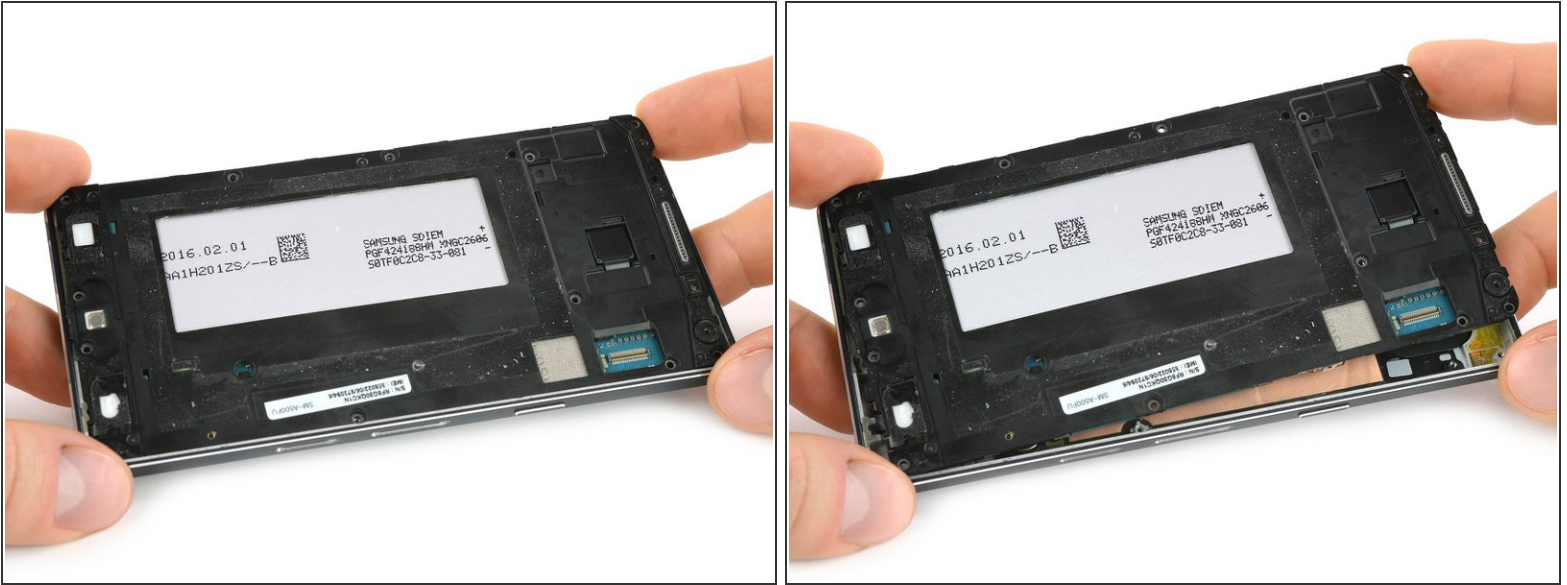
## Step 6



- Insert the tip of an opening pick right below the volume buttons to get the midframe out. This should unhinge the clips on the side and the bottom left corner.
- Put the pick underneath the volume buttons to pop out the top left corner.

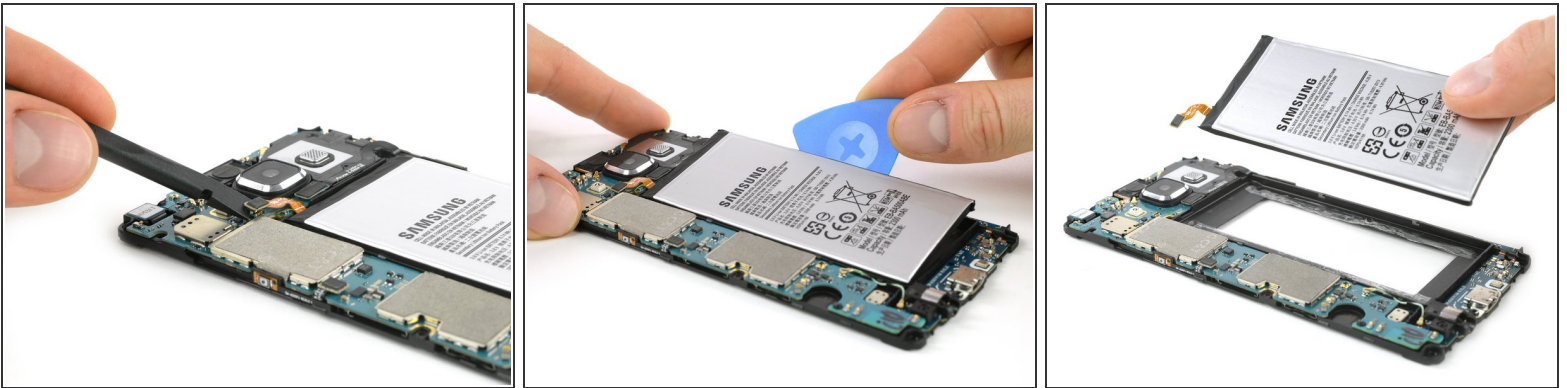


## Step 7



- Push the top part towards the opened left side to rotate the midframe out.

## Step 8



- Use a spudger to disconnect the battery.
- With an opening pick you can get between the midframe and the battery to separate it from the glue.
- Pry out the battery.



The midframe is very fragile. Be careful when prying out the battery.

To reassemble your device, follow these instructions in reverse order. Reapply adhesive where necessary.