



# Rubber Watch Battery Replacement

Replace the battery of your screwless rubber watch by using a flat tool and an x-acto knife.

Written By: Lee



## INTRODUCTION

This guide is designed to help you replace the battery of a screw-less rubber watch. With this guide, we hope that this will help preserve the life of a watch designed to be disposable. You will need to use an X-acto knife, a very sharp knife that should be handled with caution. You will also need a spudger or something flat and non-metal, something like the wooden coffee stick we use here, to take out the battery.



### TOOLS:

- [X-ACTO Knife](#) (1)
- [Spudger](#) (1)



### PARTS:

- [LR920 Battery](#) (1)

## Step 1 — Battery



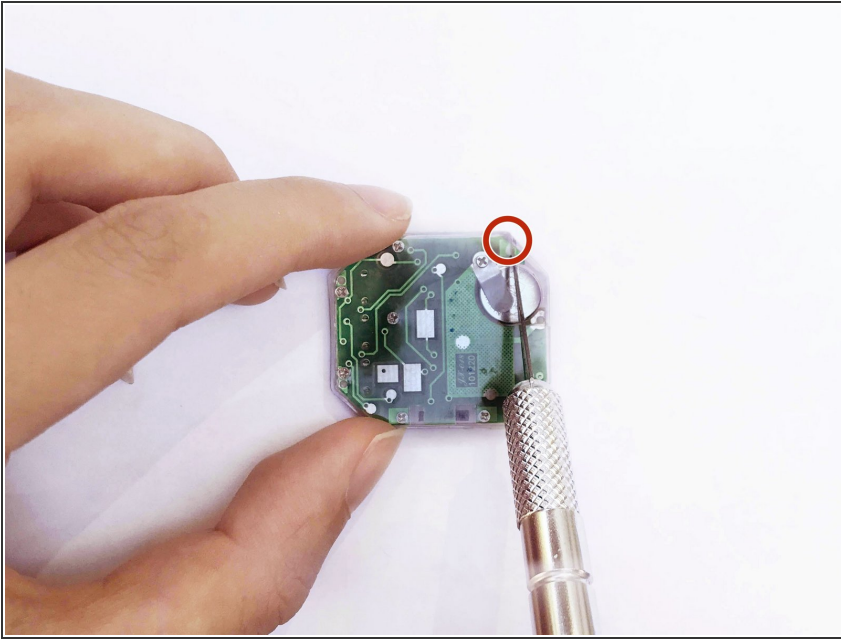
- Begin by placing the watch on its backside.

## Step 2



- Gently pull the top of the watch's back until the cap detaches, in a peeling motion.
- Pull out the white cap and green chip once it is free.

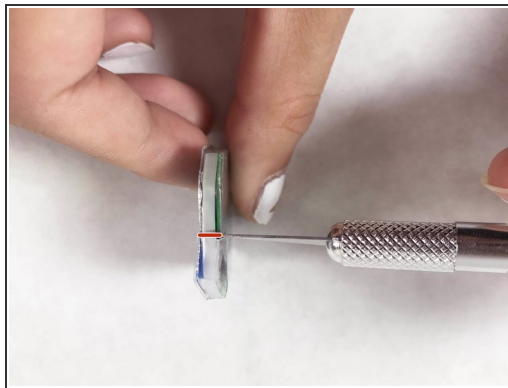
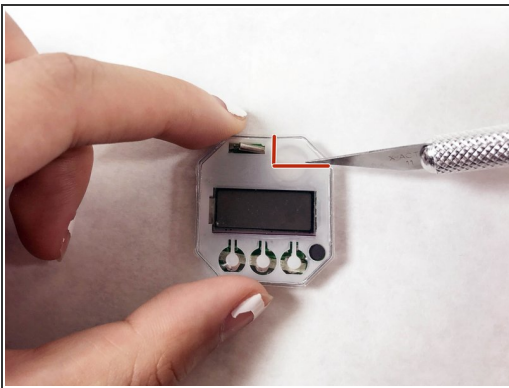
### Step 3



- Carefully puncture the plastic casing next to the battery on top of the green chip with the X-Acto knife and stop.

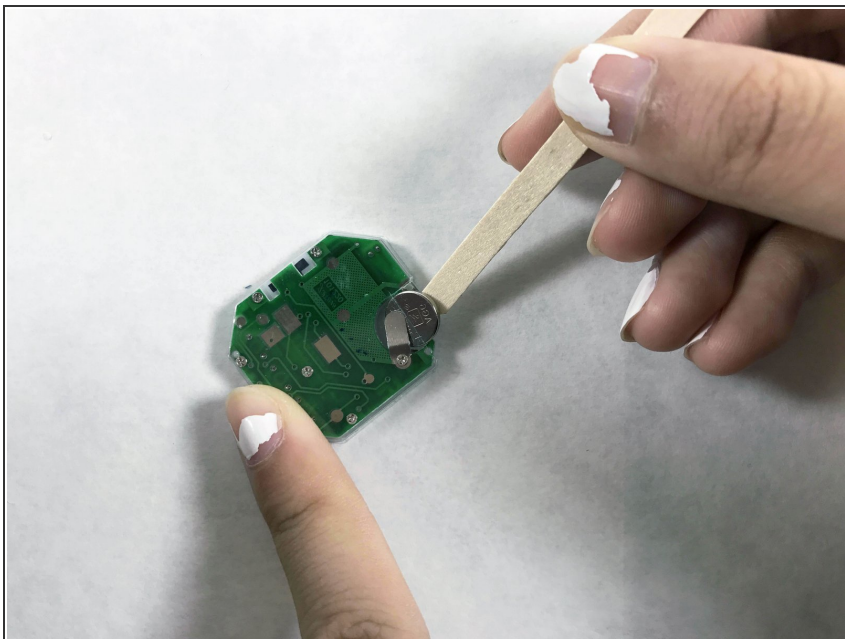
⚠ Be careful not to insert the X-Acto knife too downward into the battery.

### Step 4



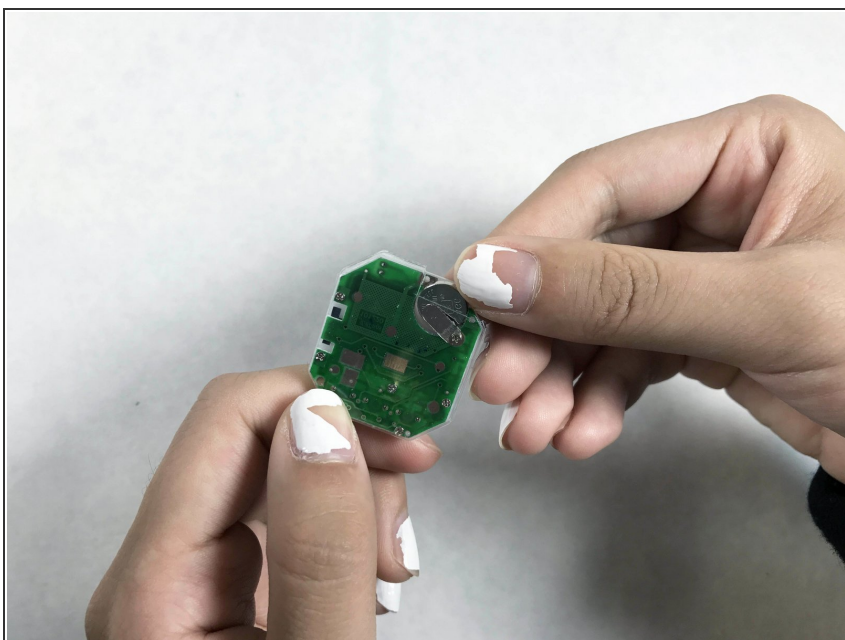
- Flip the chip around to the front.
  - In a chiseling motion, make an incision on the front side above the battery to cut out a plastic casing.
- ⚠ Make sure to hold the knife away from the hands in a safe, stable grip.
- Remove the cut plastic casing over the battery.
- ⓘ The plastic casing should come off like a cap.

## Step 5



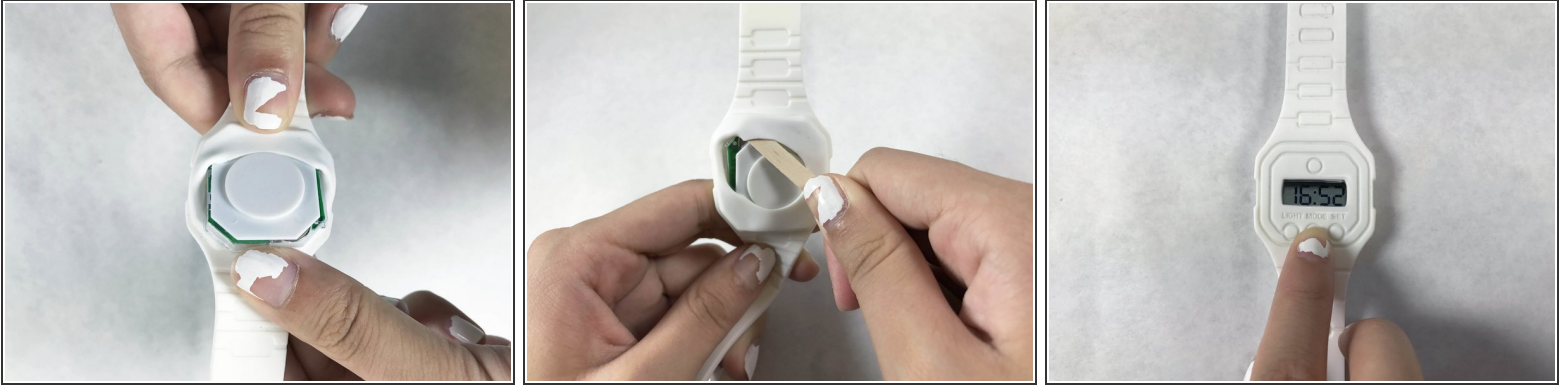
- Gently remove the battery with a spudger or a wooden coffee stick.
- ⚠ Using too much force may detach the tab holding the battery and break the watch.
- Once free, remove the dead battery.

## Step 6



- Insert the new battery.
- Place the cut plastic cap casing over the chip and battery.

## Step 7



- Place the white cap over the green chip.
- Insert the white cap and green chip into the back of the watch with the spudger or wooden coffee stick.
- Turn over the watch and check the power.