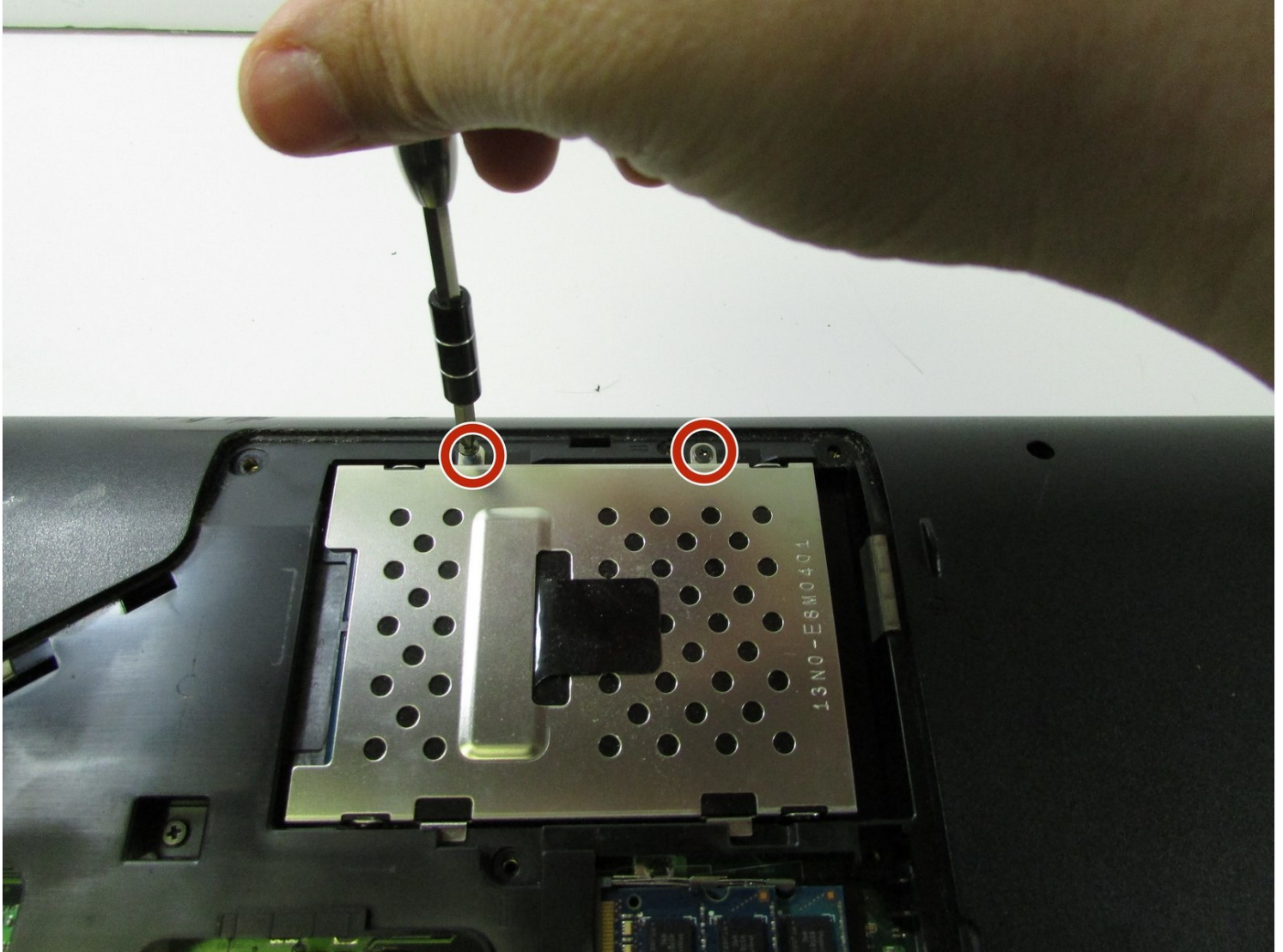




# Asus U50F-RBBAG05 Hard Drive Replacement

This guide will teach you how to remove and...

Written By: Kelly Greeling



## INTRODUCTION

This guide will teach you how to remove and replace the hard drive of your Asus ASUS U50F-RBBAG05 Series laptop. The hard drive stores all the information kept on your computer. You may want to replace it if you are experiencing hardware failure (the hard drive is not correctly storing information and may be behaving strangely), or if you want to upgrade your current hard drive for increased speed and/or capacity.

BE CAREFUL when conducting this repair, as there are many loose screws that can easily be lost.

---

### TOOLS:

Phillips Head Screwdriver: Size PH1 (1)

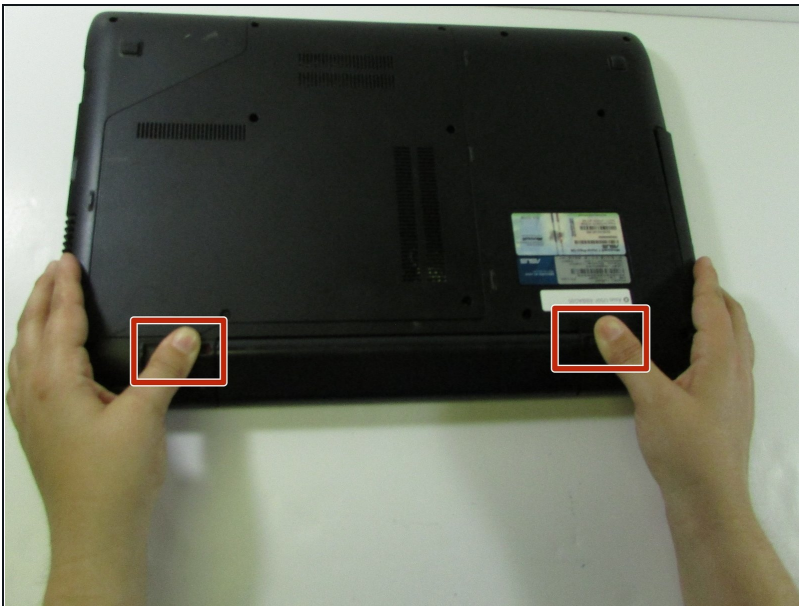
Spudger (1)


dry erase marker (1)

Magnetic Project Mat (1)

---

## Step 1 — Battery



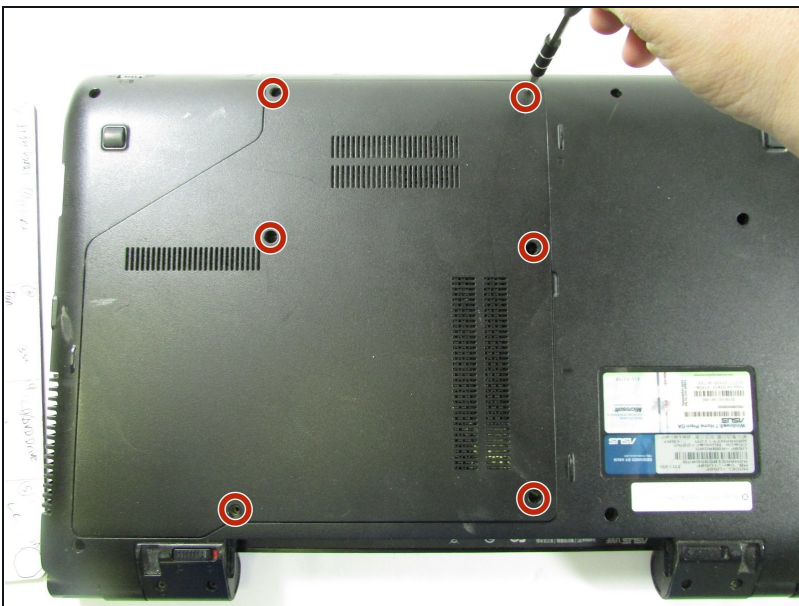
- Turn the laptop over so the bottom is facing up.
  - Slide the two tabs on the bottom of the laptop toward the edges of laptop.
  - Slide the left tab to the left to lock it into the unlocked position. The red showing next to the tab signifies that it's unlocked.
-  You will have to hold the right tab to the right to keep the slot unlocked while removing the battery.

## Step 2



- Hold down the tab on the right side, then begin sliding the battery out.
  - Remove the old battery.
- ☒ Next, insert the new battery into the empty slot. Release the right tab to begin locking the new battery into place. Slide the left tab to the right to completely lock the battery into the slot. The red that was showing near the left tab should be gone. This signifies that the battery is locked into place.

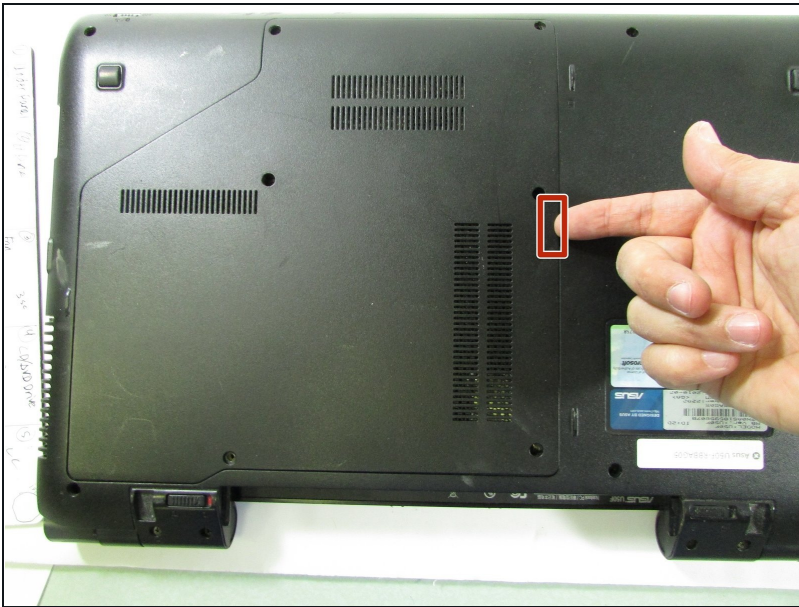
## Step 3 — Underpanel



- Remove the six screws using a Phillips #1 screwdriver.

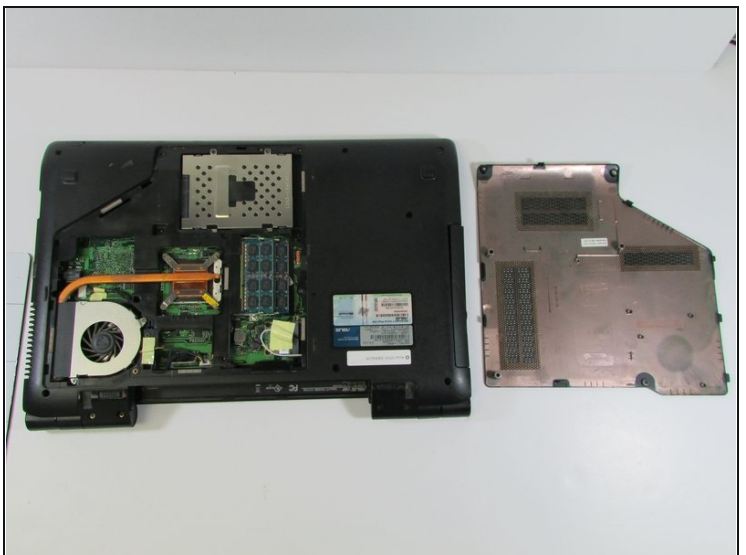
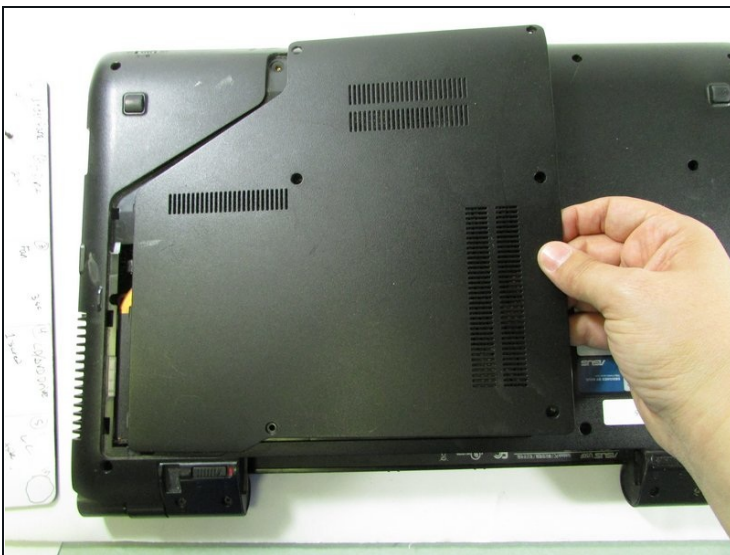


## Step 4



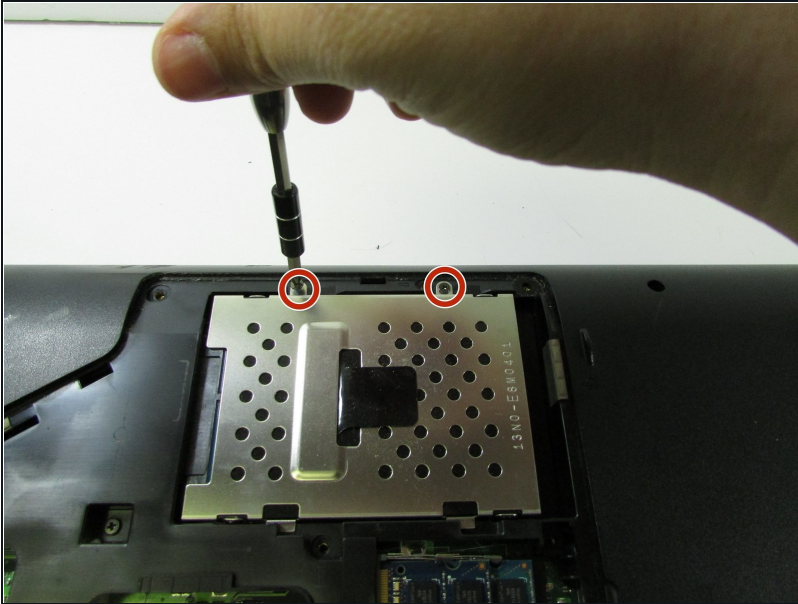
- Pry the lower panel up with your fingernail or a spudger.

## Step 5



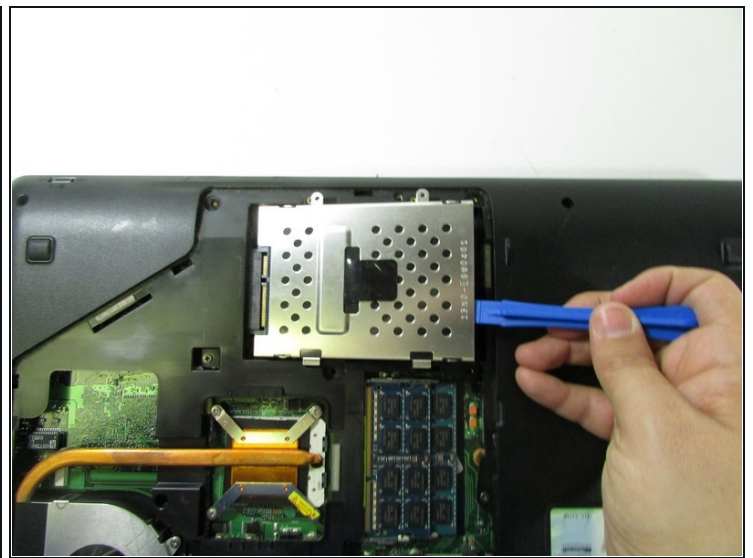
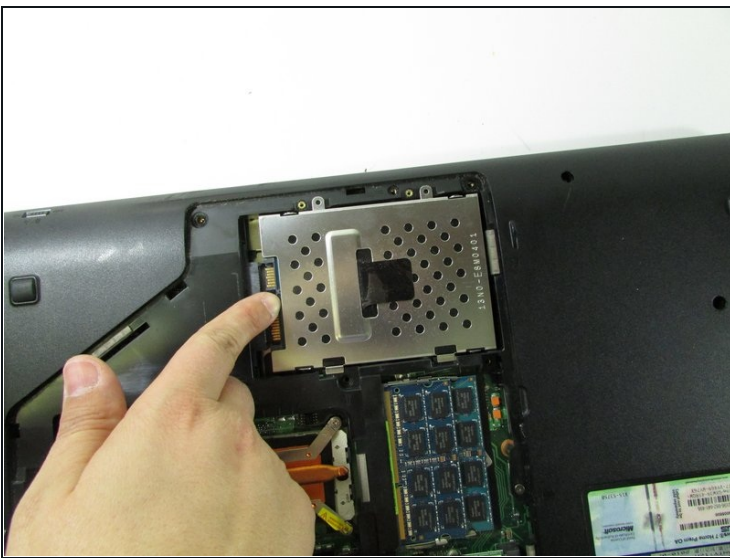
- Lift up on the panel and remove it.

## Step 6 — Hard Drive



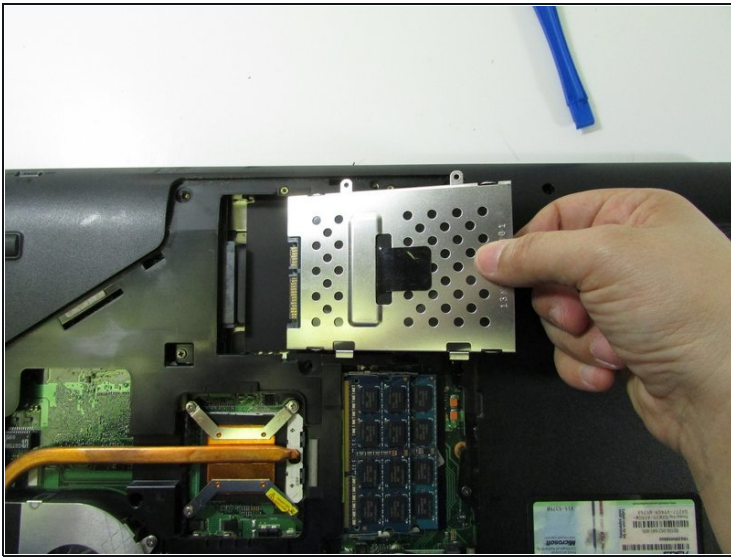
- Remove the two screws using a Phillips #1 screwdriver.

## Step 7



- Using your finger, push the hard drive back.
- Pry up the drive with an opening tool (or your fingernail).

## Step 8



- Pull back on the hard drive and lift upwards.
- Remove the component completely.

---

To reassemble your device, follow these instructions in reverse order.