



iMac Intel 24" EMC 2267 Hard Drive Replacement

Use this guide to replace or upgrade your hard...

Written By: Brittany McCrigler



INTRODUCTION

Use this guide to replace or upgrade your hard drive for more storage space.



TOOLS:

- [Heavy-Duty Suction Cups \(Pair\)](#) (1)
- [Phillips #1 Screwdriver](#) (1)
- [Spudger](#) (1)
- [T6 Torx Screwdriver](#) (1)
- [TR8 Torx Security Screwdriver](#) (1)



PARTS:

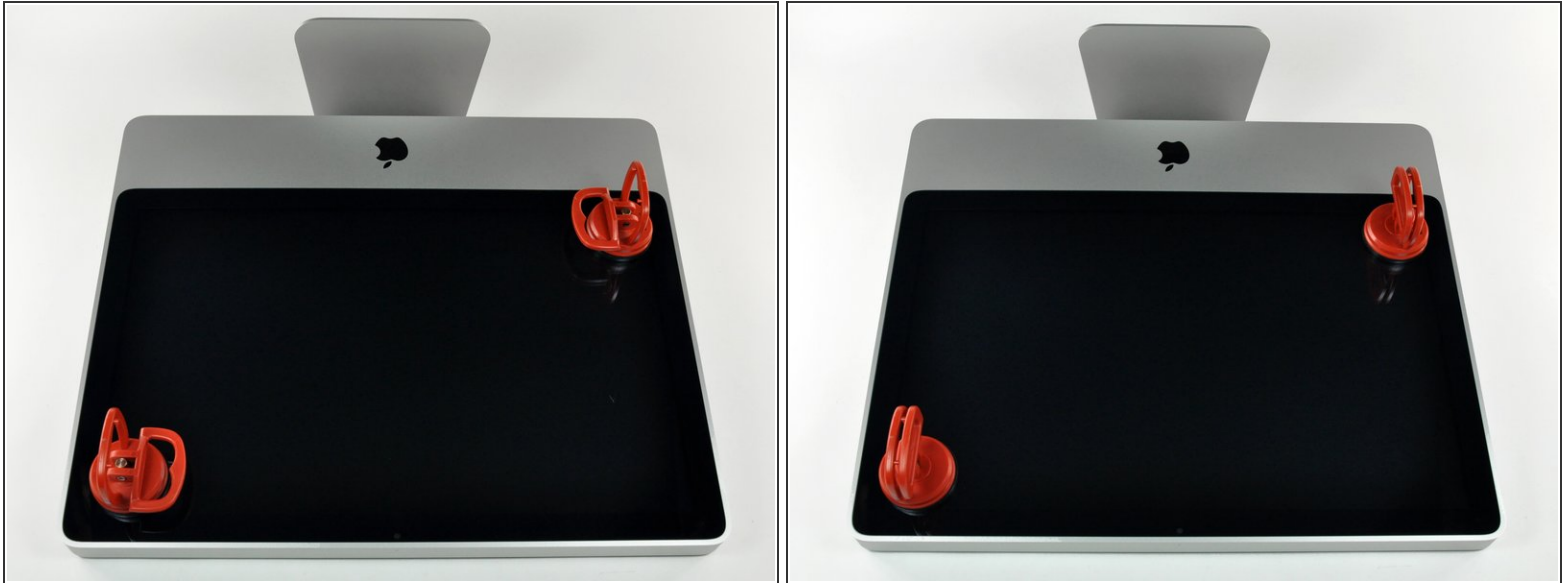
- [iMac Intel 20" and 24" Mid 2007-Early 2009 SSD Upgrade Kit](#) (1)
- [iFixit 2.5" to 3.5" SSD HDD Adapter](#) (1)

Step 1 — Access Door



- Lay your iMac front side down on a table with the lower edge facing yourself.
- Loosen the single Phillips screw in the center of the access door.
- ⓘ This screw is captive in the access door.
- Remove the access door from your iMac.

Step 2 — Glass Panel



- i** The glass panel is fixed onto the front bezel with fourteen magnets around its perimeter.

 - Stick two suction cups to opposing corners of the glass panel.
- i** To attach the [suction cups](#) we sell, first position the suction cup with the movable handle parallel to the face of the glass panel. While lightly holding the suction cup against the glass, raise the movable handle until it is parallel with the other handle.
- i** If your suction cups refuse to stick, try cleaning both the glass panel and the suction cup with a mild solvent.

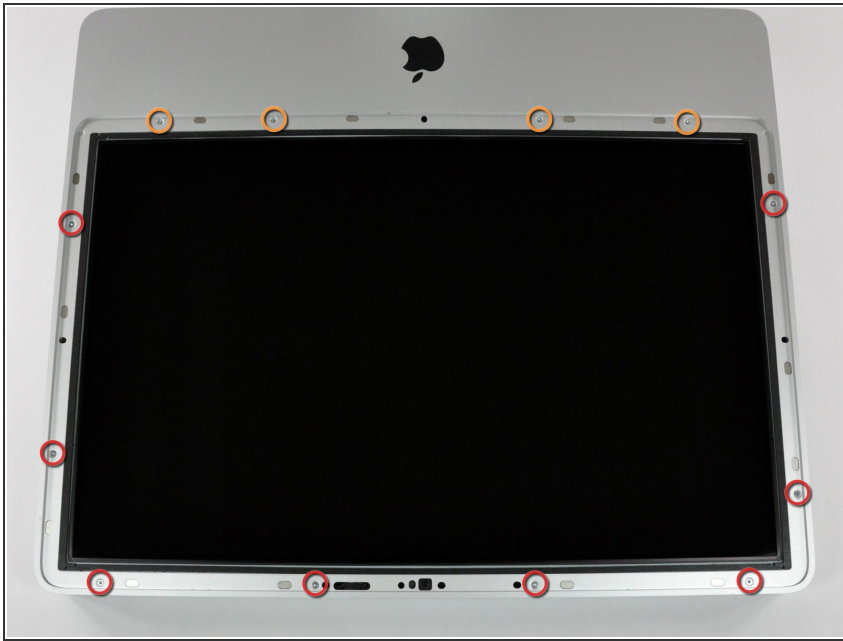
Step 3



- Gently pull the glass panel straight up off the iMac.

- ⚠ The glass panel has several positioning pins around its perimeter. To avoid shearing these pins off the glass panel, be sure to only pull straight up during removal.
- ★ Be meticulous about cleaning the LCD and the inside face of the glass panel before reinstallation, as any fingerprints or dust trapped inside will be annoyingly visible when the display is on.
- ★ When replacing the glass, be sure there's nothing between the glass and the frame. Stray cables could be damaged or crack the glass.

Step 4 — Front Bezel




- Remove the following 12 screws securing the front bezel to the rear case:
 - Eight 13 mm T8 Torx.
 - Four 25 mm T8 Torx.
- ⓘ On the 24" iMac Intel Model A1225, the bottom center two screws are long (26mm), four on sides (two left, two right) are medium (18mm), and the remaining 6 (four top, two bottom corners) are short (14mm).

Step 5



 The front bezel is still attached to the iMac by the microphone cable.

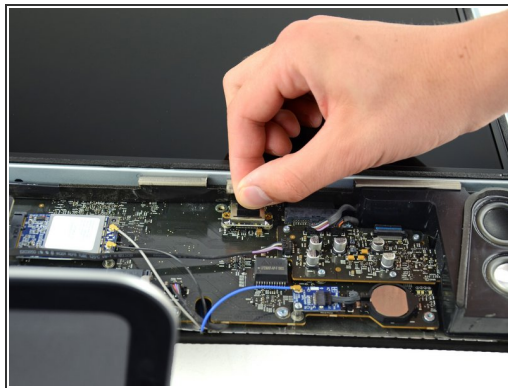
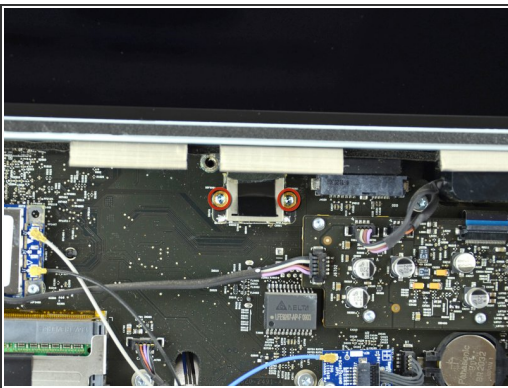
- Gently lift the front bezel from its top edge off the rear case.
 - Once the top edge of the front bezel has cleared the rear case, rotate the front bezel toward the stand and lift it off the rear case.
 - Rotate the front bezel away from the rest of the device and lay it above the top edge of the iMac.
-  When reinstalling the front bezel, start at the lower edge and make sure it is flush with the rear case before lowering the top edge onto the iMac.

Step 6



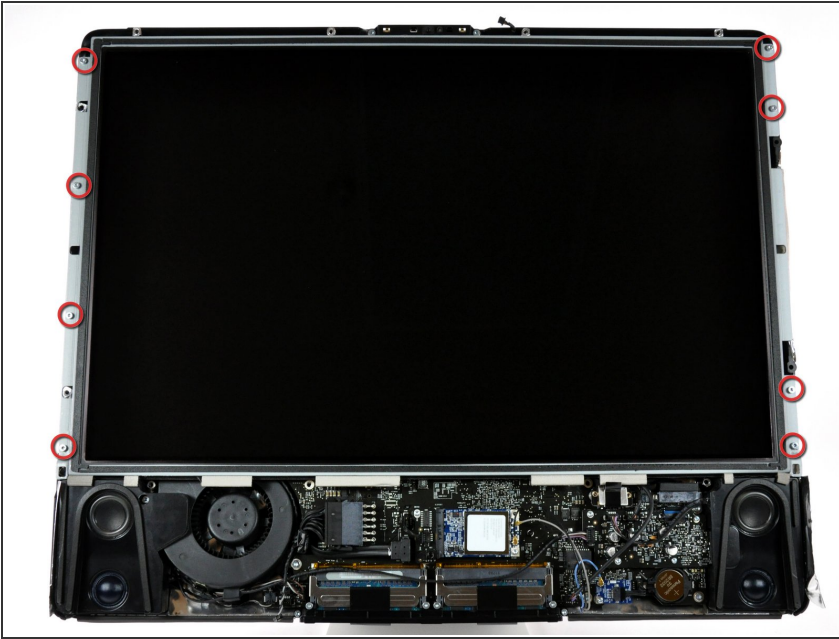
- Disconnect the microphone cable connector, removing tape as necessary.
- ★ For the front bezel to sit properly, be sure to tuck the microphone cable and connector into the void next to the camera board.

Step 7 — Display Panel



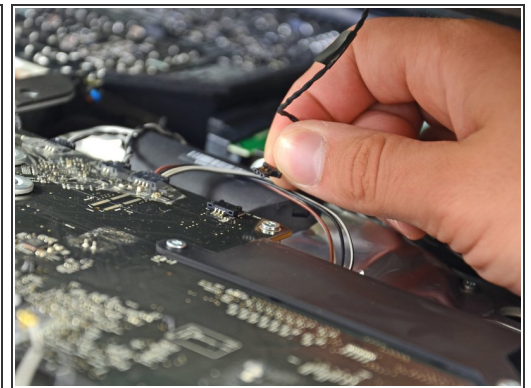
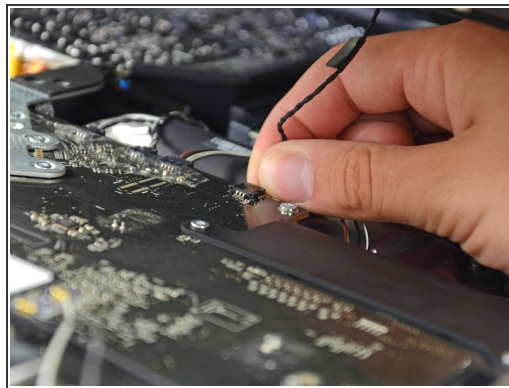
- Remove the two 5.3 mm T6 torx screws from the LCD connector.
 - Firmly grasp the pull tab on top of the connector and pull it straight up out of its port.
- ⚠ Make sure that you are pulling the tab and not the connector cable.

Step 8



- Remove the eight T8 Torx screws securing the display panel to the rear case.
- ⓘ The iMac shown is a 20" model, but the screw locations should be approximately correct.

Step 9

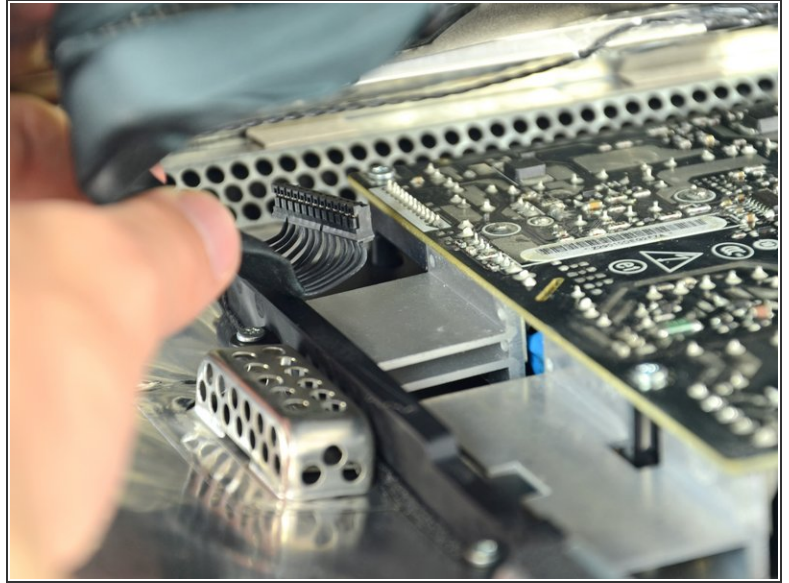
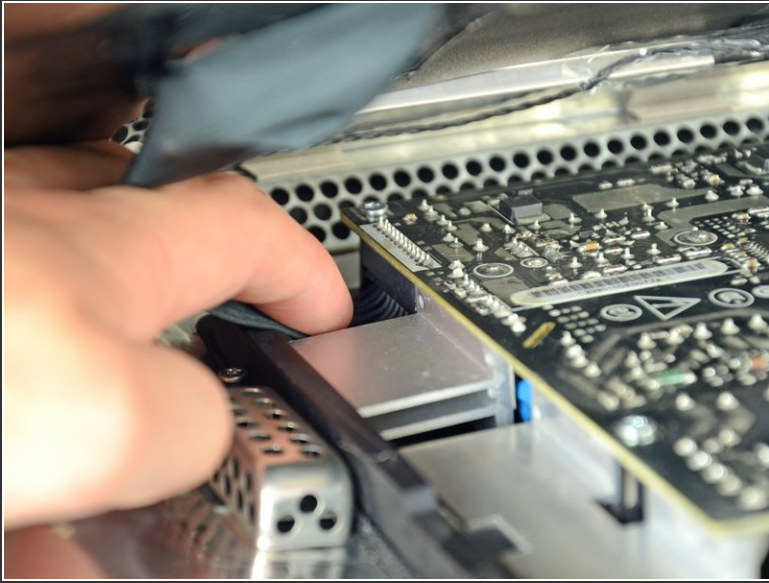


- Place your hands on either side of the bottom of the display panel, and lift it up enough that you can reach the connectors inside.

⚠ Do not try to remove the display panel completely as it is still connected to the rest of the device.

- While holding the display panel up with one hand, locate and remove the display thermal sensor cable from its connector.

Step 10



- While still holding the display panel up, use two fingers to firmly push down on the power supply cable connector from its socket.

⚠ Be very careful not to touch the exposed face of the power supply to avoid electric shock from the many large capacitors attached to the other side of the board.

Step 11



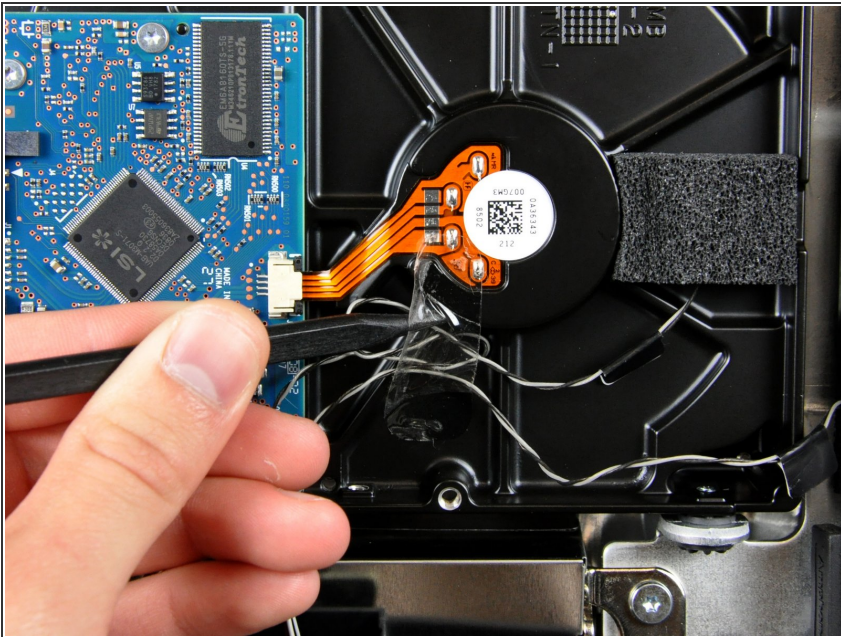
- Lift and remove the display panel from the device.

Step 12 — Hard Drive



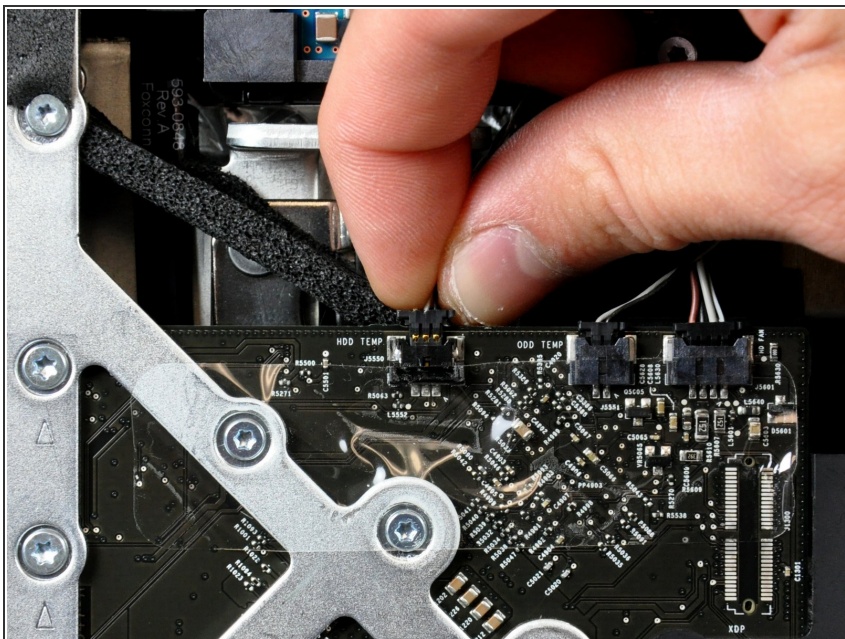
- To remove the hard drive bracket, squeeze the middle against the side of the hard drive while rotating the top left edge toward yourself.
- After the left edge has been freed, rotate the bracket toward the right edge of the hard drive.
- Lift the hard drive bracket straight up off the chassis.

Step 13



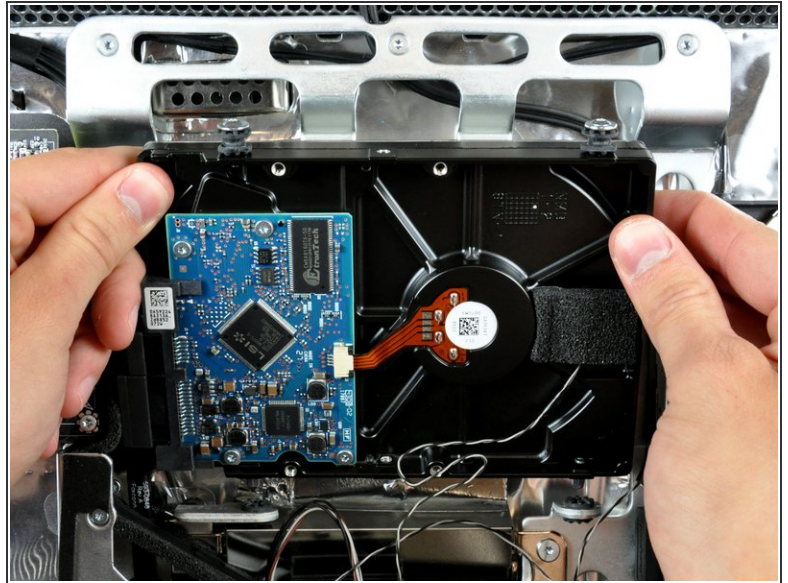
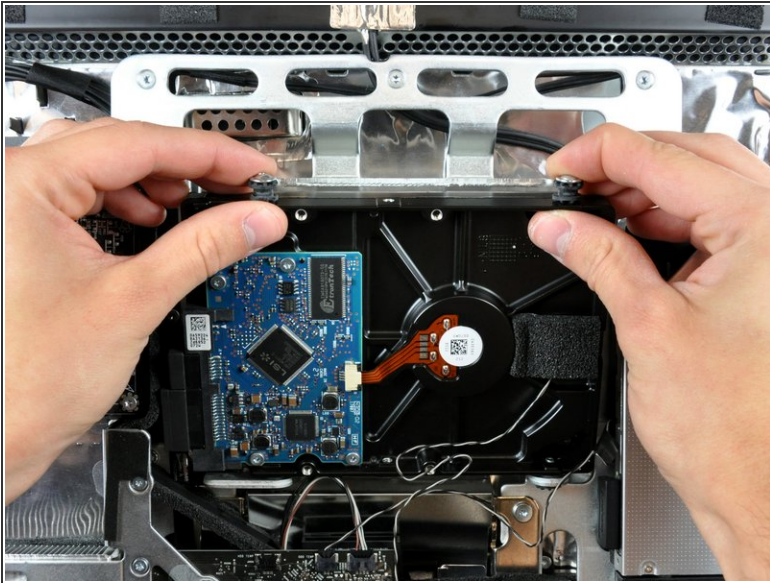
- If present, remove the small piece of tape covering the hard drive and optical drive temperature sensor cables.

Step 14




- Pull the hard drive temperature sensor cable straight away from its socket on the logic board.
- ⓘ When removing this connector, it is helpful use your thumbnails to push the ears on either side of the connector toward the top of your iMac.

Step 15

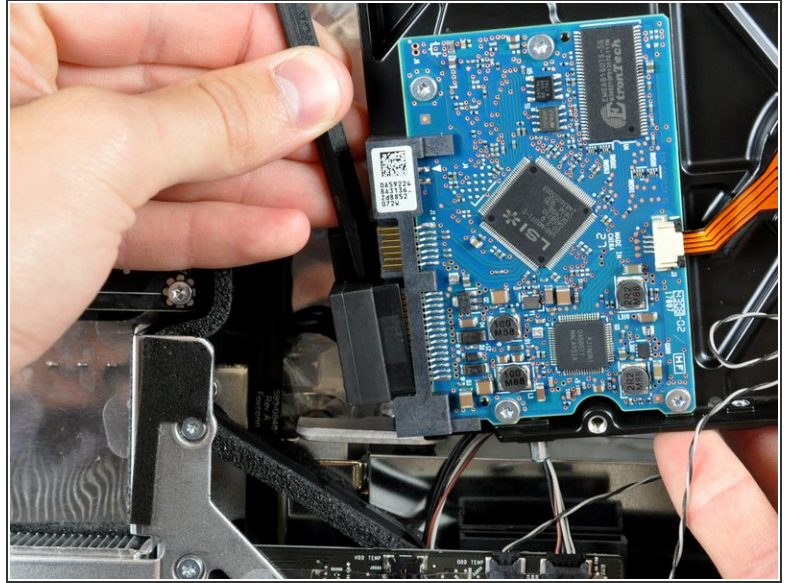
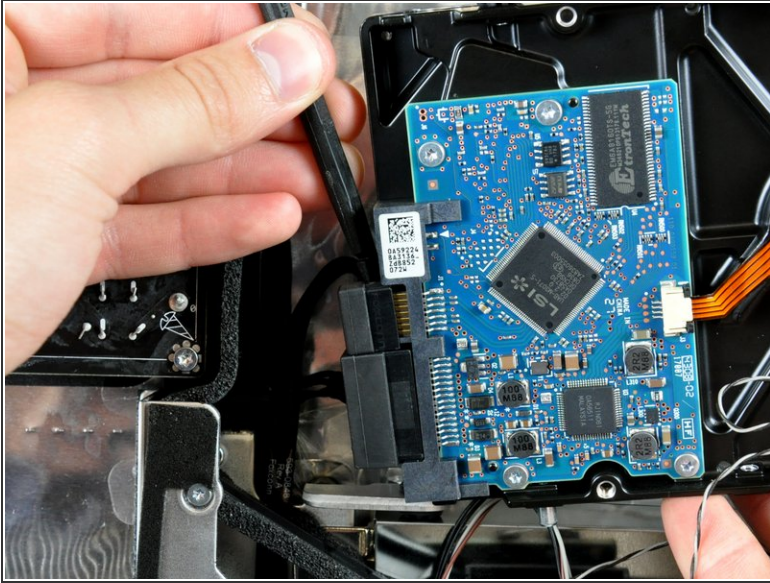


- Rotate the top of the drive toward yourself, then lift the hard drive straight up off its lower pins.

 The hard drive is still connected via the SATA cables.

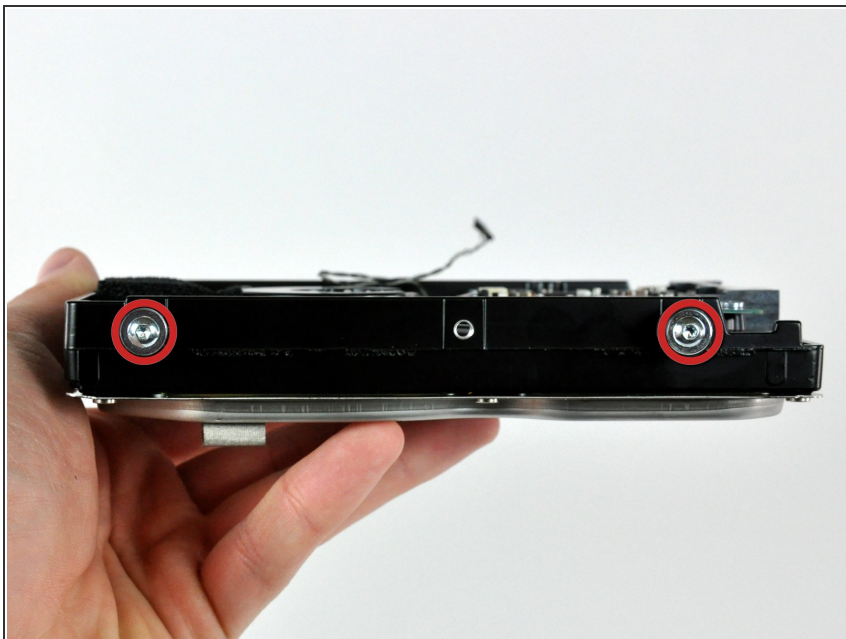
-  When reinstalling your hard drive, be careful not to push the rubber grommets through the openings in the chassis with the lower hard drive pins as retrieving them may require logic board removal.

Step 16



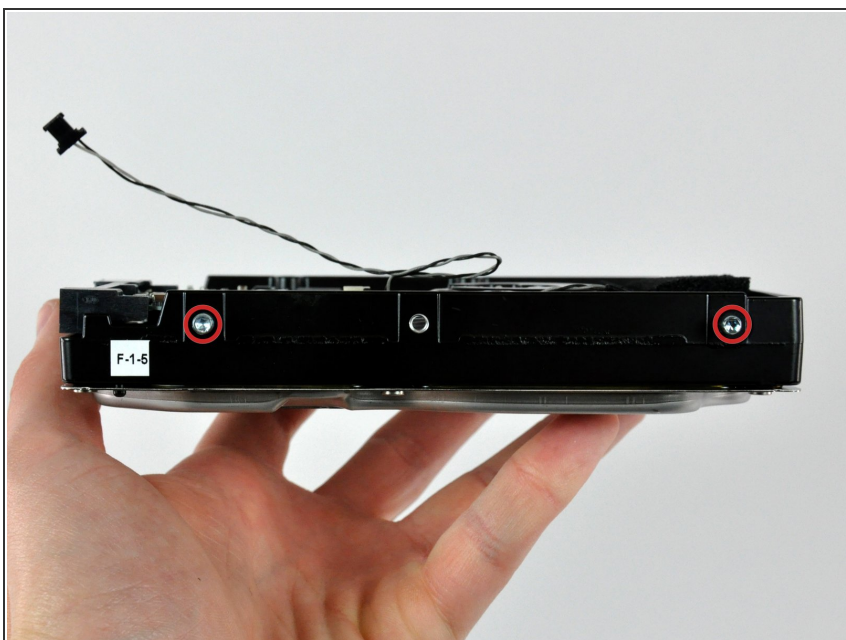
- Insert the flat end of a spudger between the SATA data cable and the edge of the hard drive.
- Twist the spudger to separate the SATA data cable from the hard drive.
- Disconnect the SATA data cable from the hard drive.
- ⓘ Repeat this process for the SATA power cable.
- Lift the hard drive out of your iMac, minding the thermal sensor cable that may get caught.

Step 17 — Hard Drive



- Remove the two T8 Torx screws and their attached rubber grommets from the hard drive.

Step 18



- Remove the two T8 Torx pins from the side of the hard drive nearest the power and data connectors.

Step 19




- Peel off the piece of foam tape covering the hard drive thermal sensor.

Step 20



- To remove the hard drive thermal sensor, use the sharp end of a spudger to lift the center finger of the thermal sensor bracket while applying slight tension to the thermal sensor cable.

 If the thermal sensor is stuck to the hard drive, skip to the next step.

Step 21



- Use the flat end of a spudger to pry the hard drive thermal sensor bracket up off the adhesive securing it to the hard drive.
- ⓘ If the adhesive gets dirty or will not stick to your new hard drive, place some double-sided tape under the two semicircular ears of the thermal sensor bracket.

Step 22



- Use a spudger to remove the small piece of EMI foam from the top of the hard drive.
- ★ Don't forget to transfer this to your new hard drive.
- ⓘ If you are installing a new hard drive, we have an [OS X install guide](#) to get you up and running.

To reassemble your device, follow these instructions in reverse order.