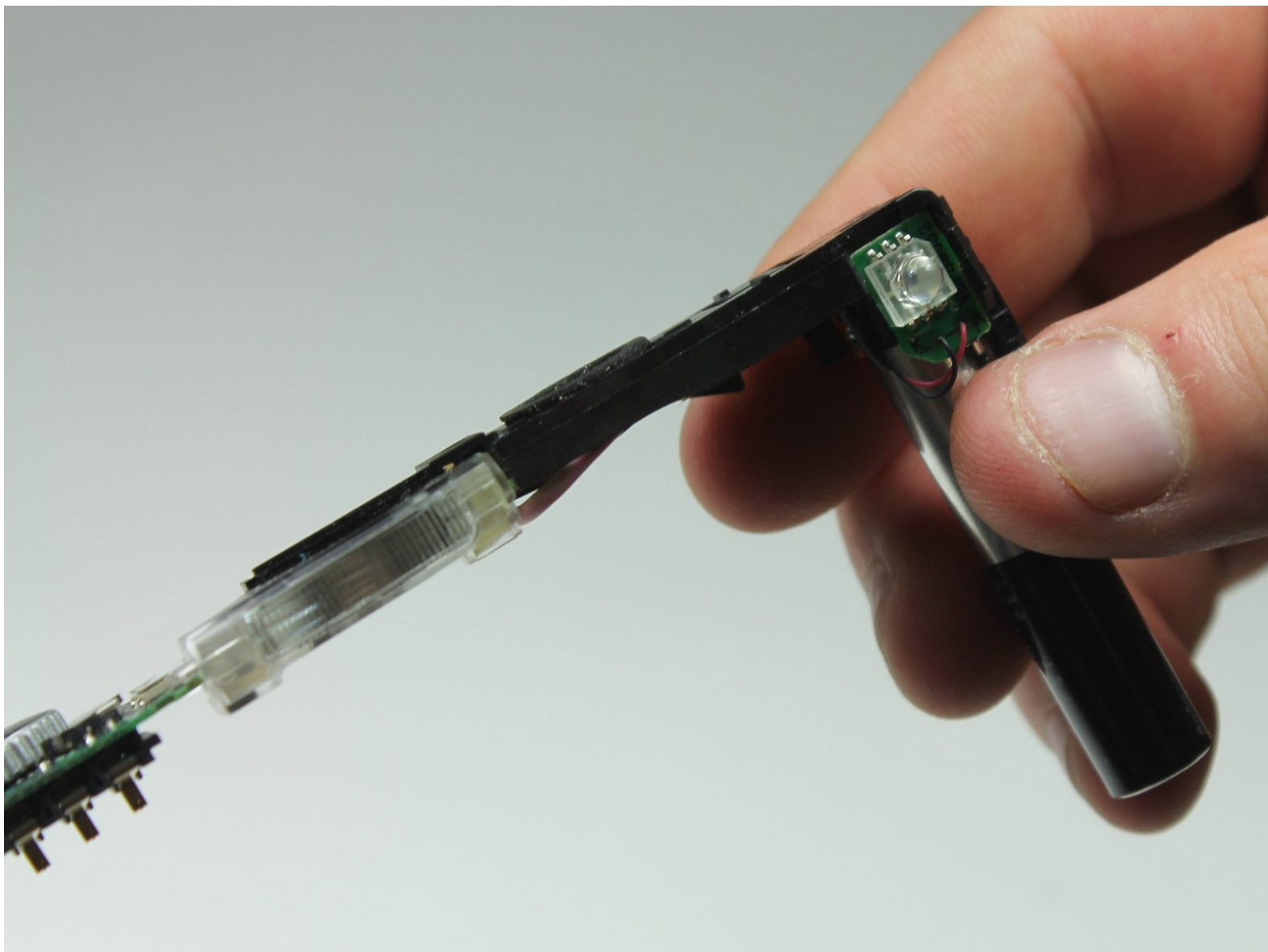




# Panasonic Lumix DMC-FX07 Flash Assembly Replacement

Replace the flash assembly so the bright light continue blind your subjects.

Written By: Karissa



---

## INTRODUCTION

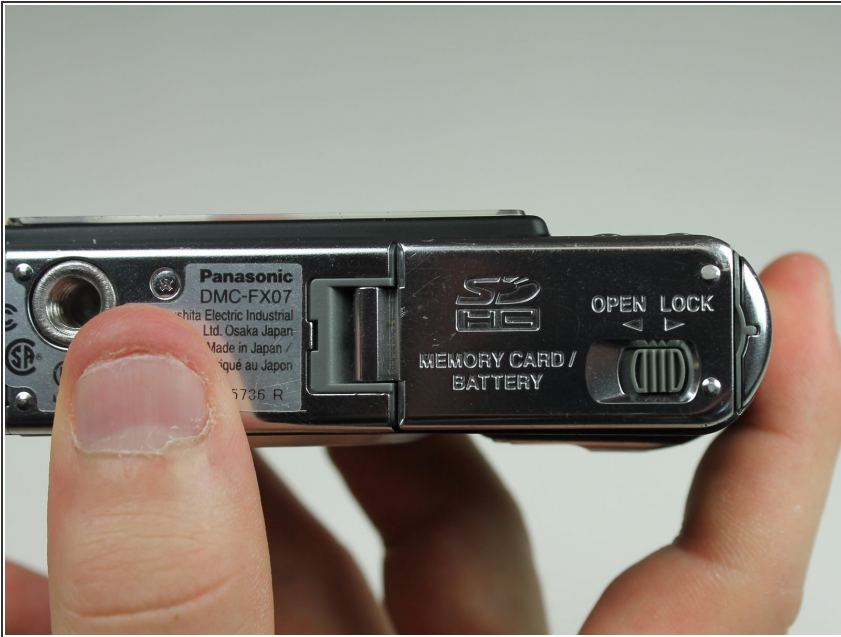
This guide will take you through the steps of how to replace the flash assembly.



### TOOLS:

- [Phillips #00 Screwdriver](#) (1)
  - [Spudger](#) (1)
-

## Step 1 — Battery



- Move the switch on the battery door to the Open position.
- ⓘ The door will automatically swing open after you let it go.

## Step 2



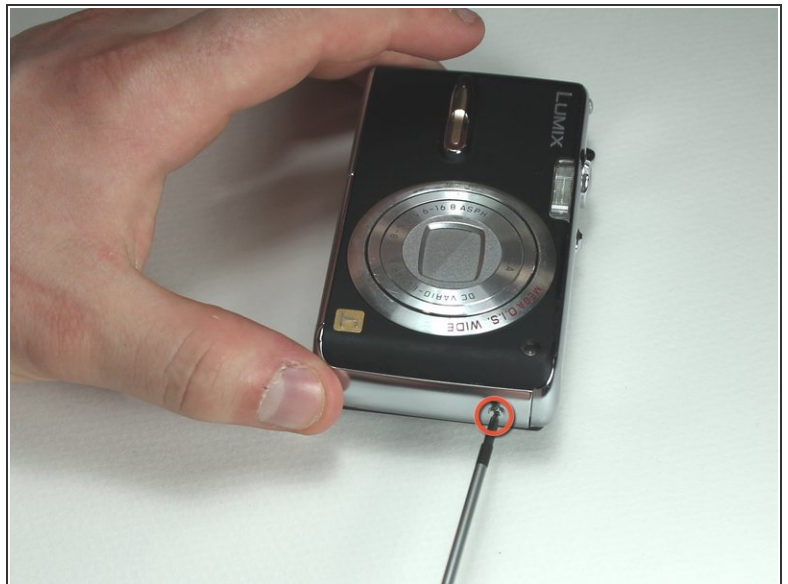
- Push the small gray tab on the top right corner to the left. The battery will pop out slightly.
- Keep your finger clear of the battery when it pops out.

### Step 3 — Memory Card



- Push the memory card in and let go.
- ⓘ The memory card will pop out slightly.
- Pull out the memory card.

### Step 4 — Back Cover



- Unscrew the small screws on the sides of the camera.
- ⓘ The screws on the left side(#00P, 4.7mm) are longer than the screw on the right side(#00P, 3.3mm).



## Step 5



- Unscrew the three small screws on the bottom(#00P, 3.3mm).

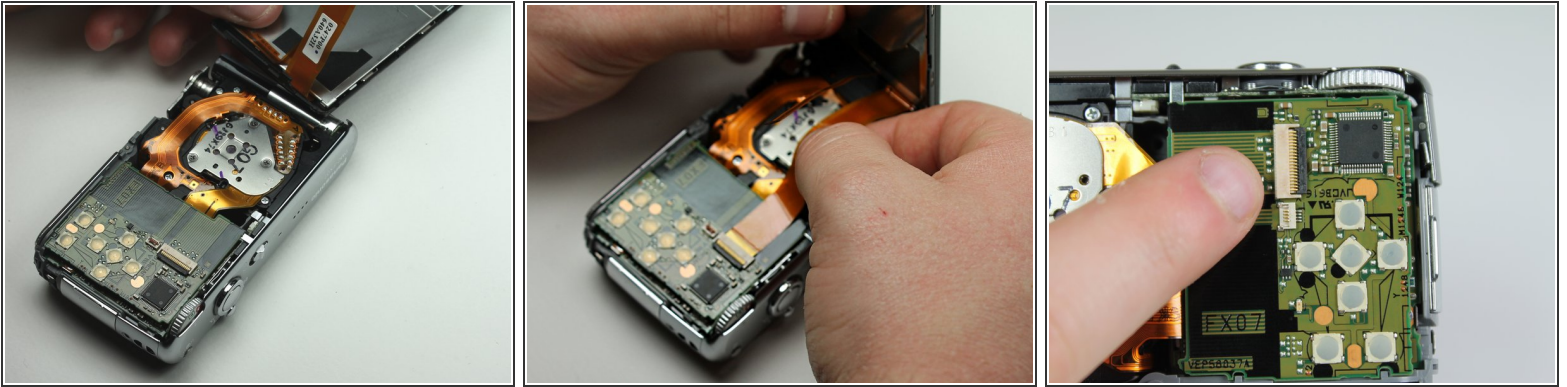
**i** The bottom will fall off.

## Step 6



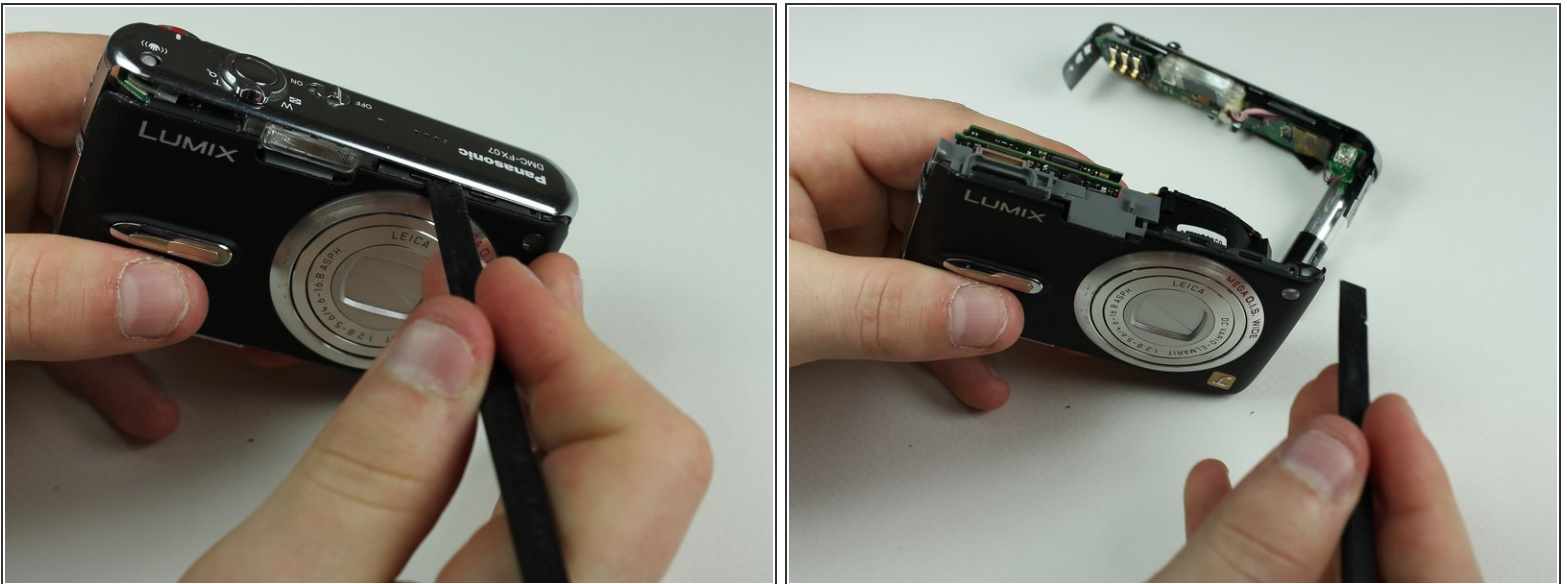
- Lift up the bottom back cover by prying the bottom edge with the spudger.
- Gently lift up the back cover with your hand from the bottom to the top.

## Step 7



- Lift the tabs on the ZIF connectors.
- The ribbon cables should easily come out of the ZIF connectors.

## Step 8 — Top Cover



- Using the spudger, pry off the top cover by gliding the spudger along the entire edge between the top cover and the front cover.

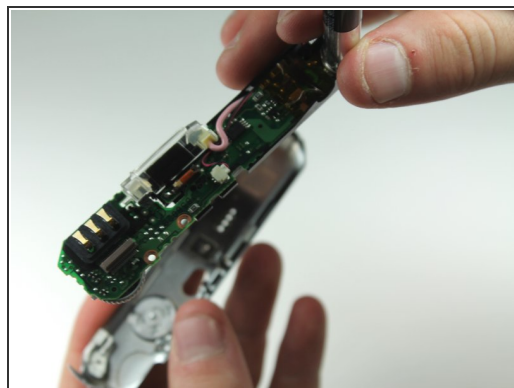
⚠ Be careful not to damage the cylindrical capacitor on the circuit board under the top cover.

## Step 9 — Flash Assembly




- Unscrew the small screws beneath the top cover(#00P, 1.7mm).

## Step 10

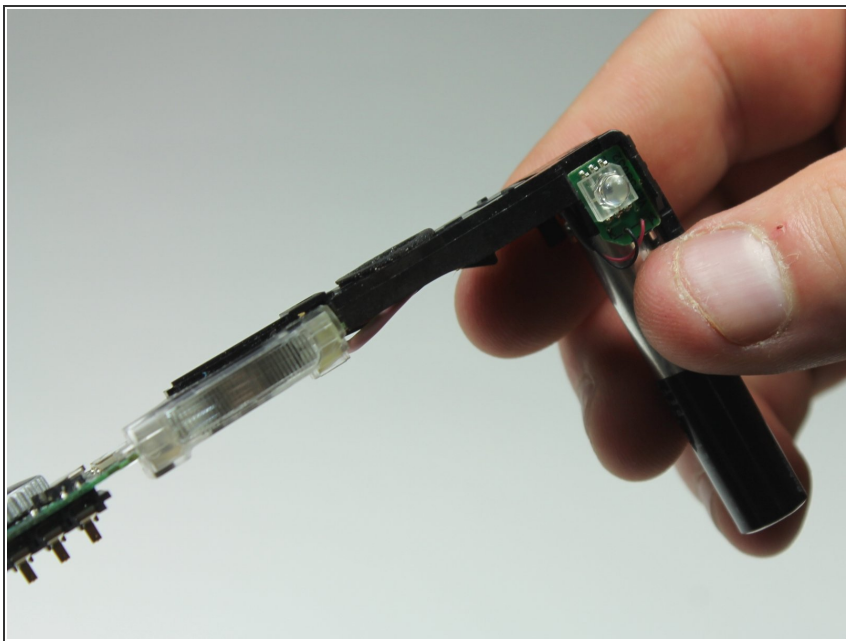


- Lift the logic board out with your hand by pushing the tabs out and pulling the logic board up.

 The on/off switch and the anti-shake button may fall out.



## Step 11



- i** The flash assembly is hardwired into the top circuit board.

To reassemble your device, follow these instructions in reverse order.