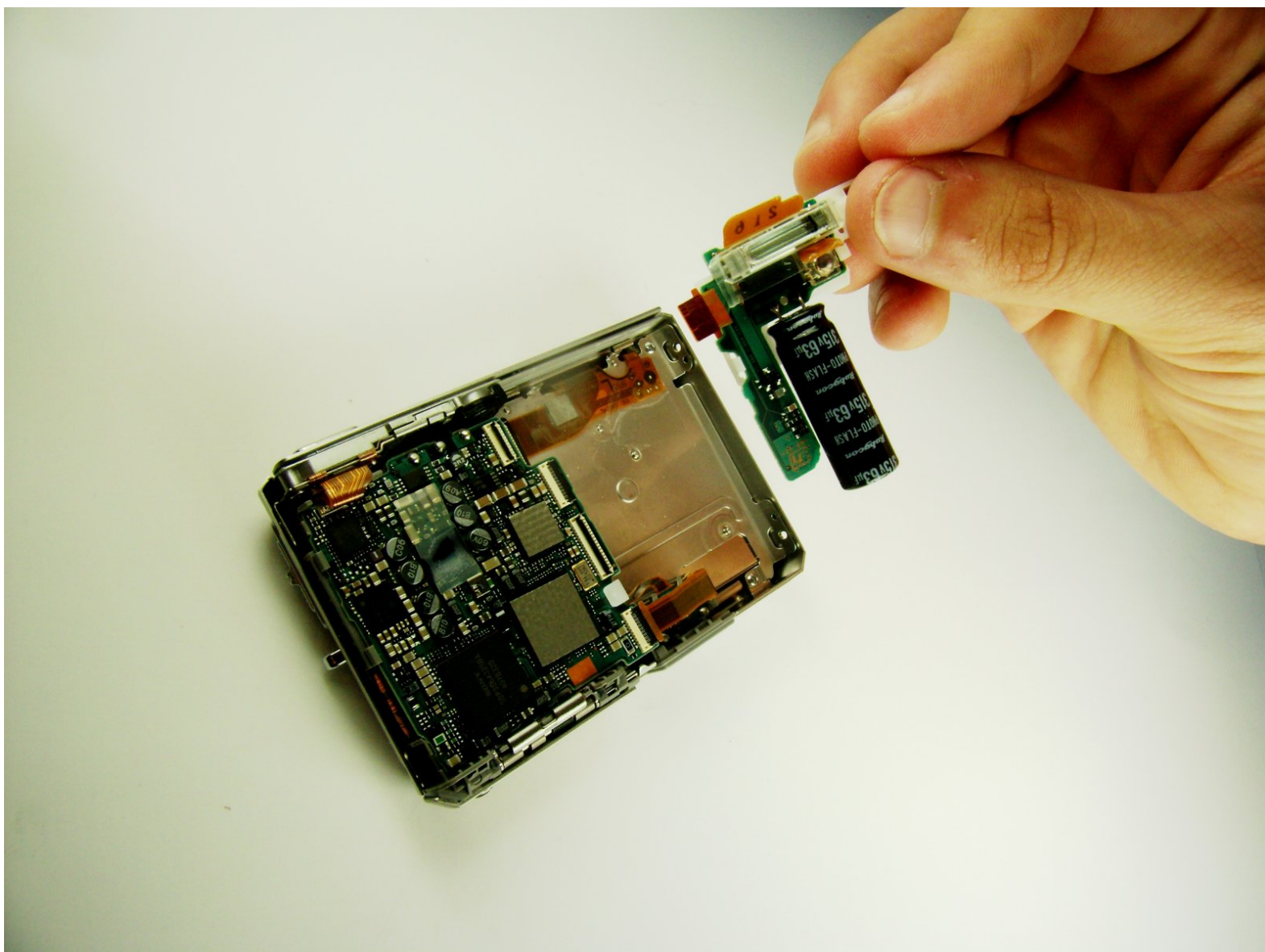




# Sony Cyber-shot DSC-T1 Flash Replacement

Replace the dead flash bulb in the camera.

Written By: Paul Elrich



## INTRODUCTION

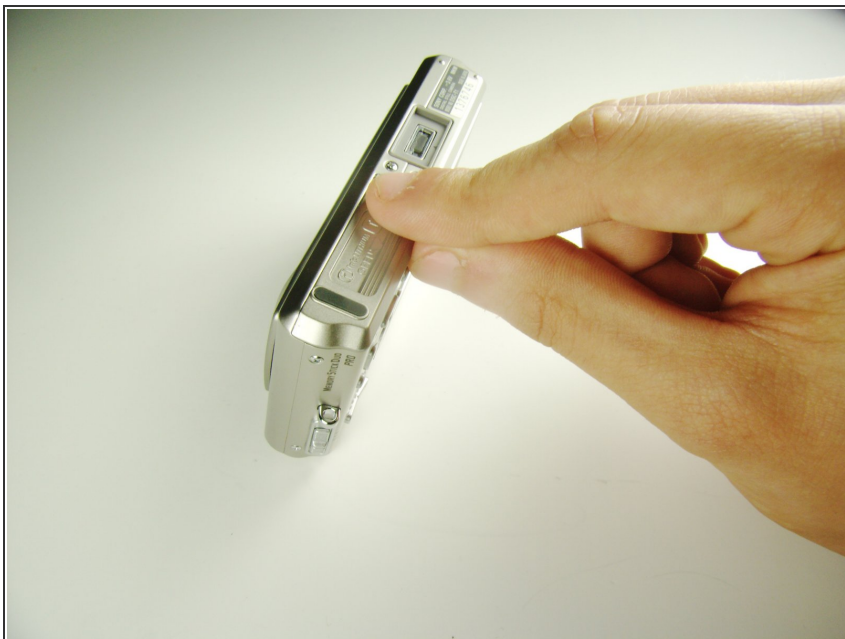
The flash bulb is the component of the camera responsible for illuminating the surroundings of the images. Replacing the flash bulb will require the removal of battery and black plastic housing that holds the CCD chip.

---

### TOOLS:

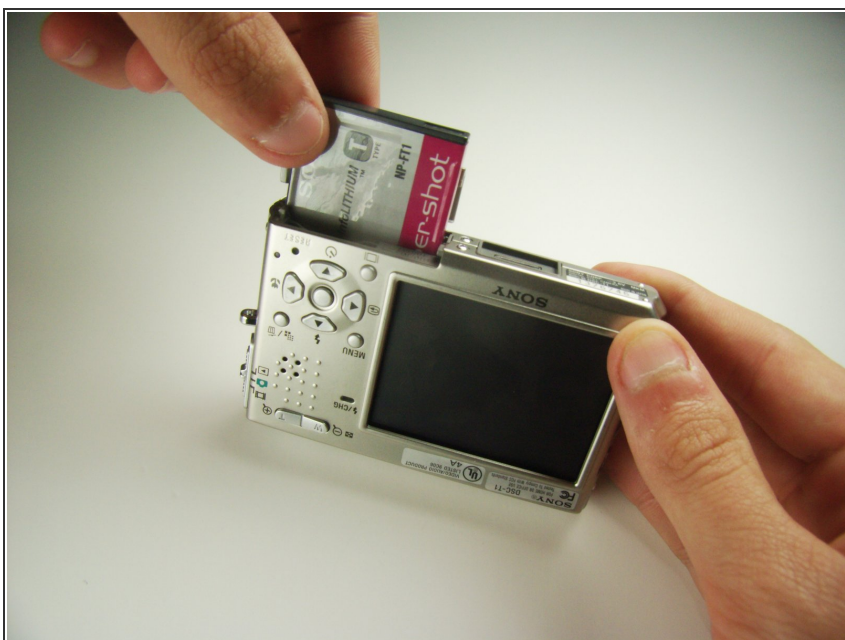
- [Phillips #00 Screwdriver](#) (1)
  - [iFixit Opening Tools](#) (1)
-

## Step 1 — Battery



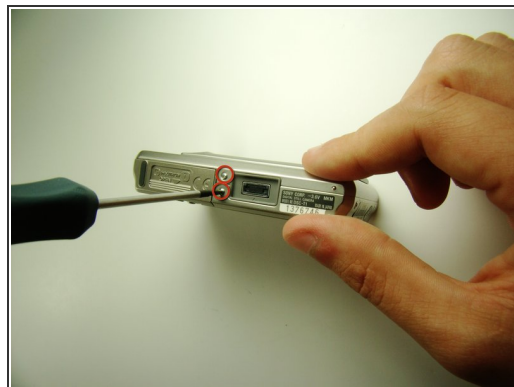
- Locate the cover on the bottom of the camera.
  - Slide the cover towards the back of the camera.
- ⚠ Be careful—the battery can slide out on its own.

## Step 2



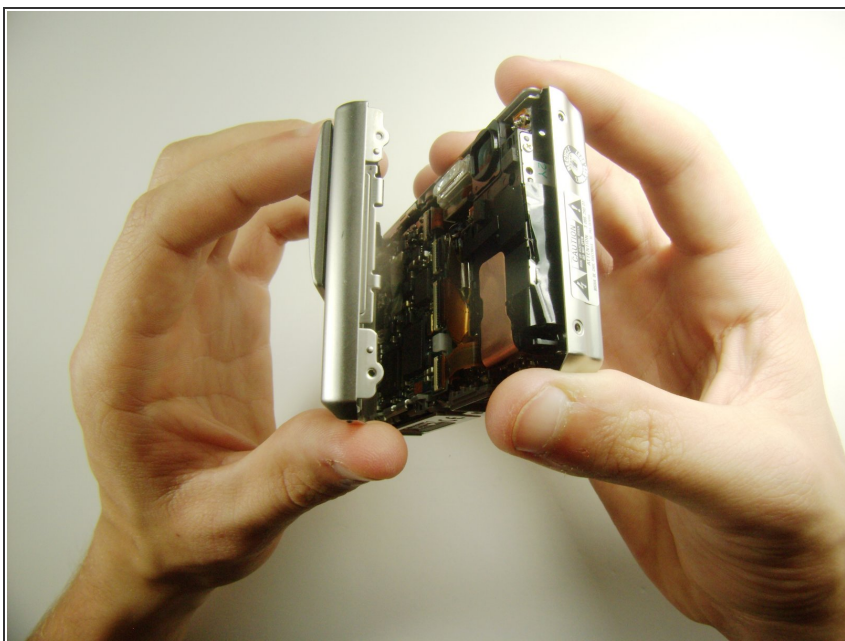
- Carefully remove the exposed battery.
- ⓘ If it is difficult to remove, flip over the camera and the battery will slide out.

## Step 3 — Flash



- Locate and remove the 3mm screws on the top and sides of the camera with the size 00 screwdriver.

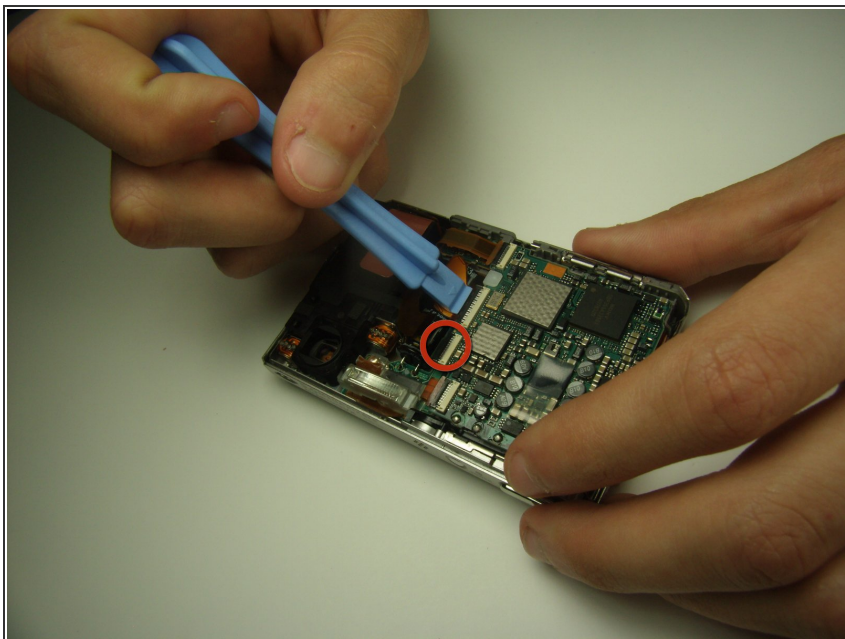
## Step 4



- Pull the two halves of the camera apart.
- Place the two halves down with the insides facing you.

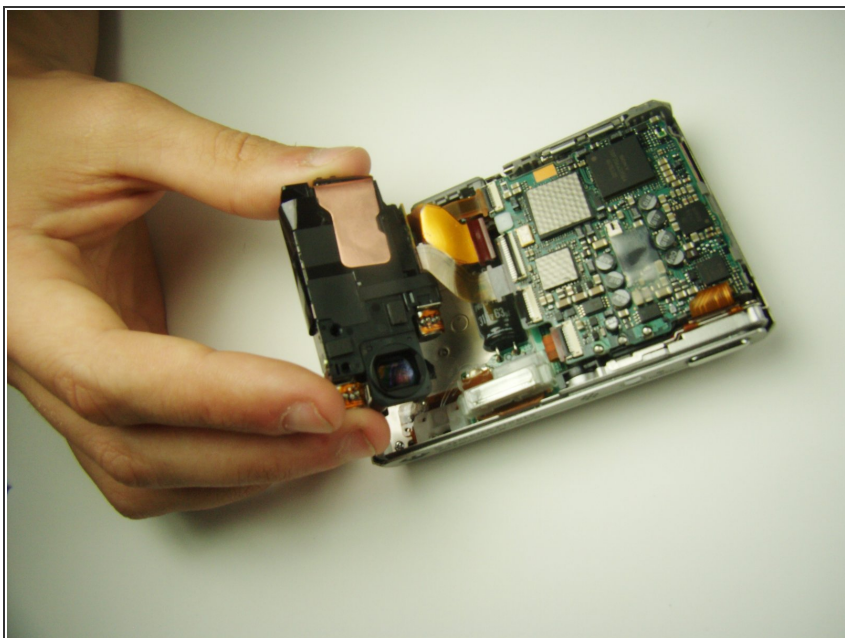


## Step 5



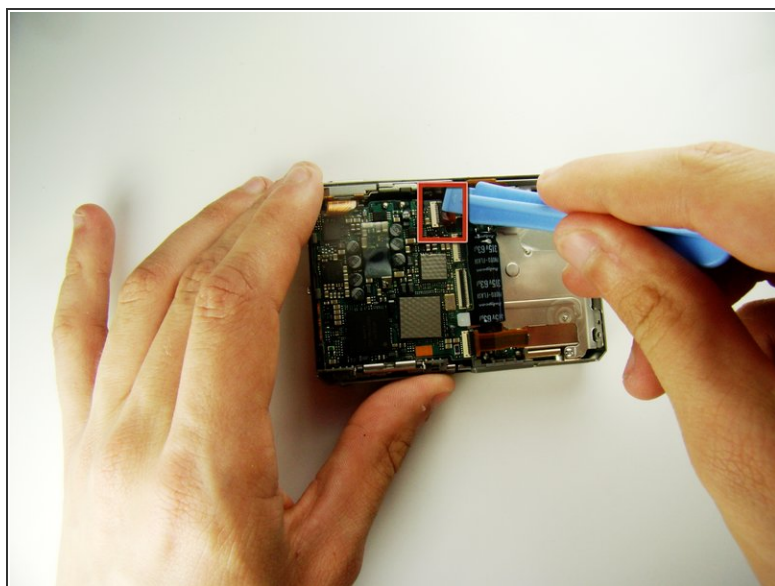
- Find the two clips holding the motherboard to the black lens box.
- Slide the plastic opening tool in between the ribbon and the black part of the clip, then flip it. (If difficult, your fingernail can also be used)

## Step 6



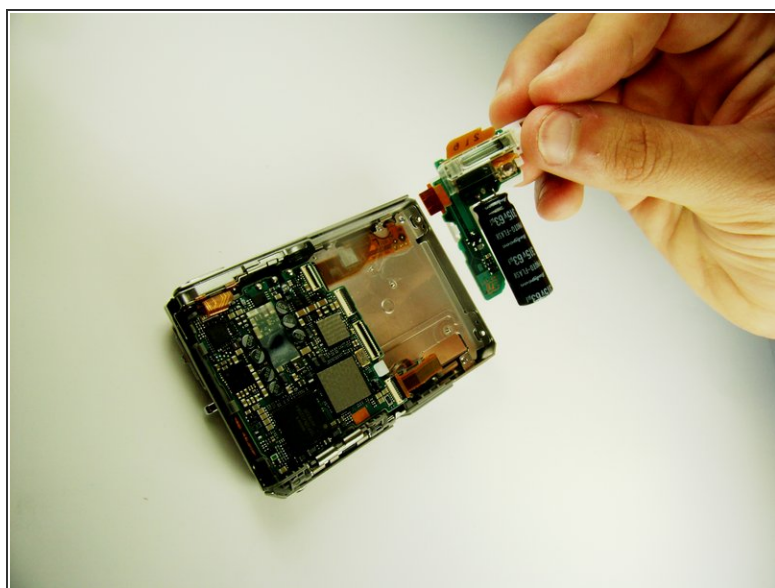
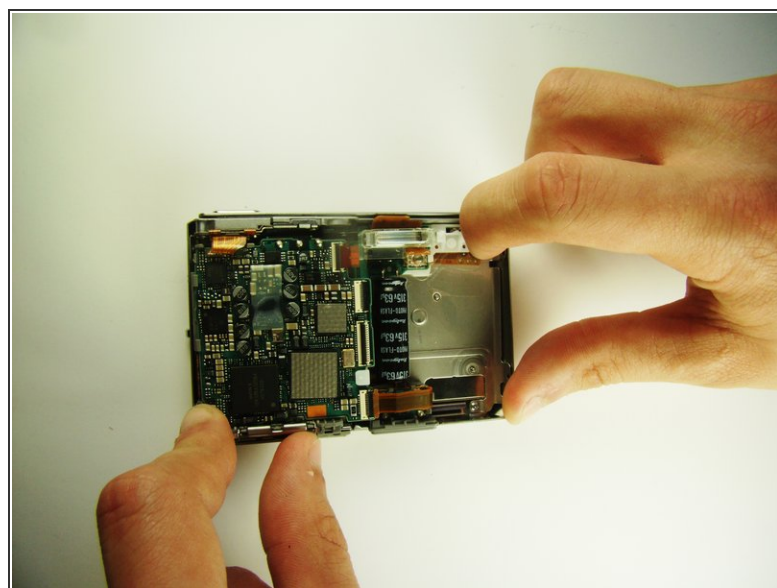
- After releasing the clips, pull out black lens box.

## Step 7



- Use the plastic opening tool to flip the clip.

## Step 8



- Grab the white part and slide it to the right until it clicks.
- ⓘ This may require some force.
- Pull out the flash.

To reassemble your device, follow these instructions in reverse order.