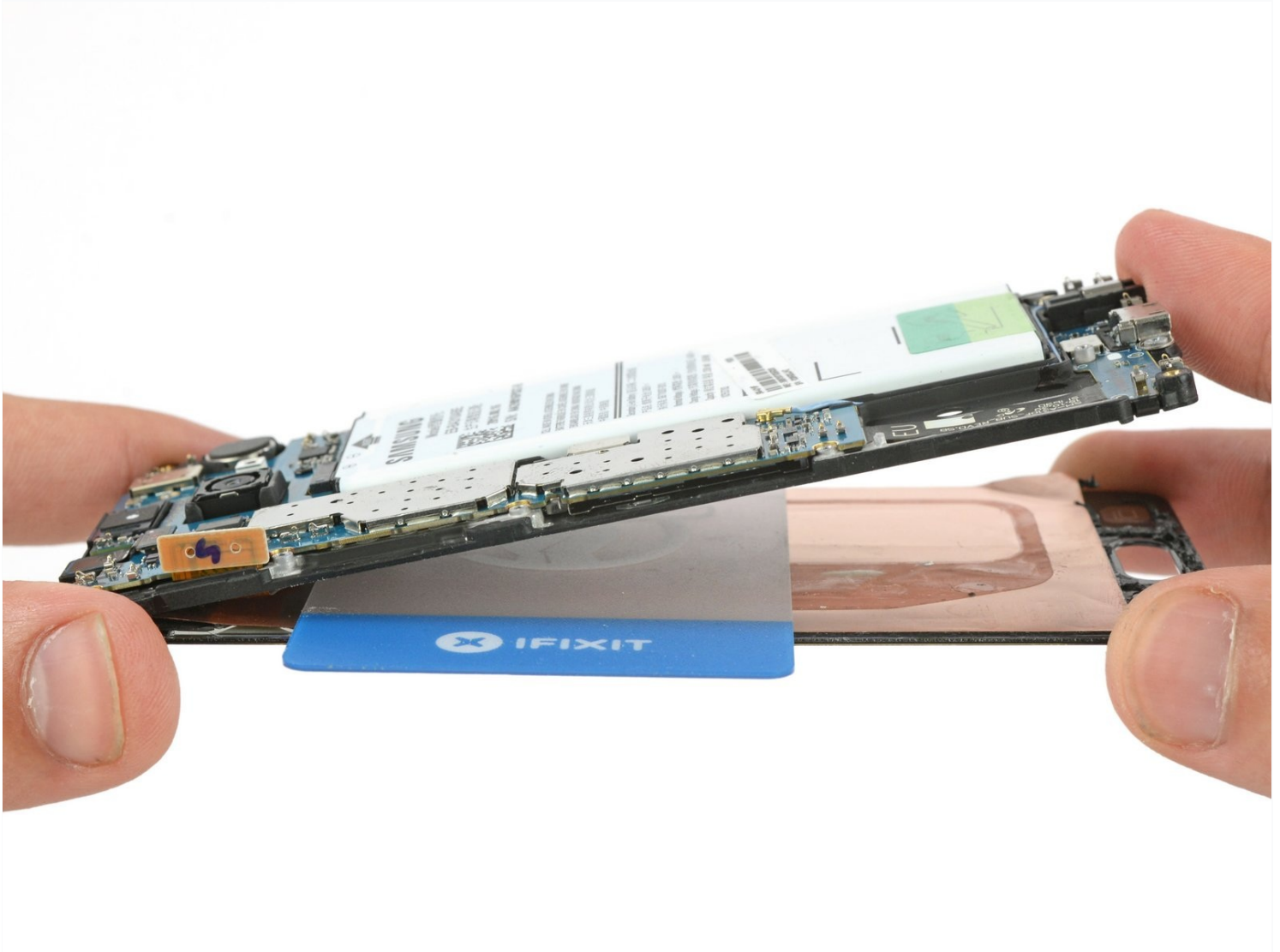




Samsung Galaxy A3 2016 Display Replacement

Use this guide to replace a broken display or...

Written By: Dominik Schnabelrauch



INTRODUCTION

Use this guide to replace a broken display or cracked glass of your Samsung Galaxy A3 (2016).

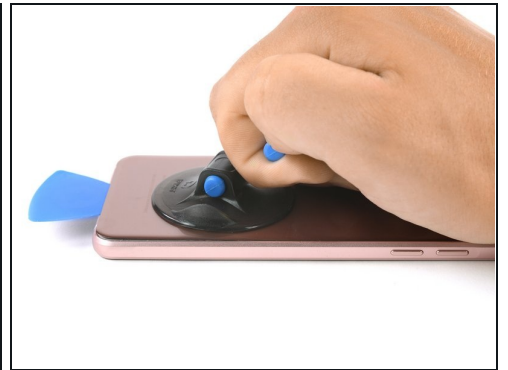
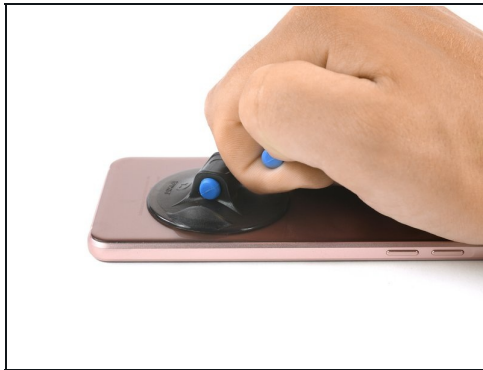
TOOLS:

[iOpener](#) (1)
[Suction Handle](#) (1)
[iFixit Opening Picks \(Set of 6\)](#) (1)
[Plastic Cards](#) (1)

PARTS:

[Galaxy A3 \(2016\) Screen](#) (1)
[Tesa 61395 Double-Sided Tape](#) (1)

Step 1 — Back cover



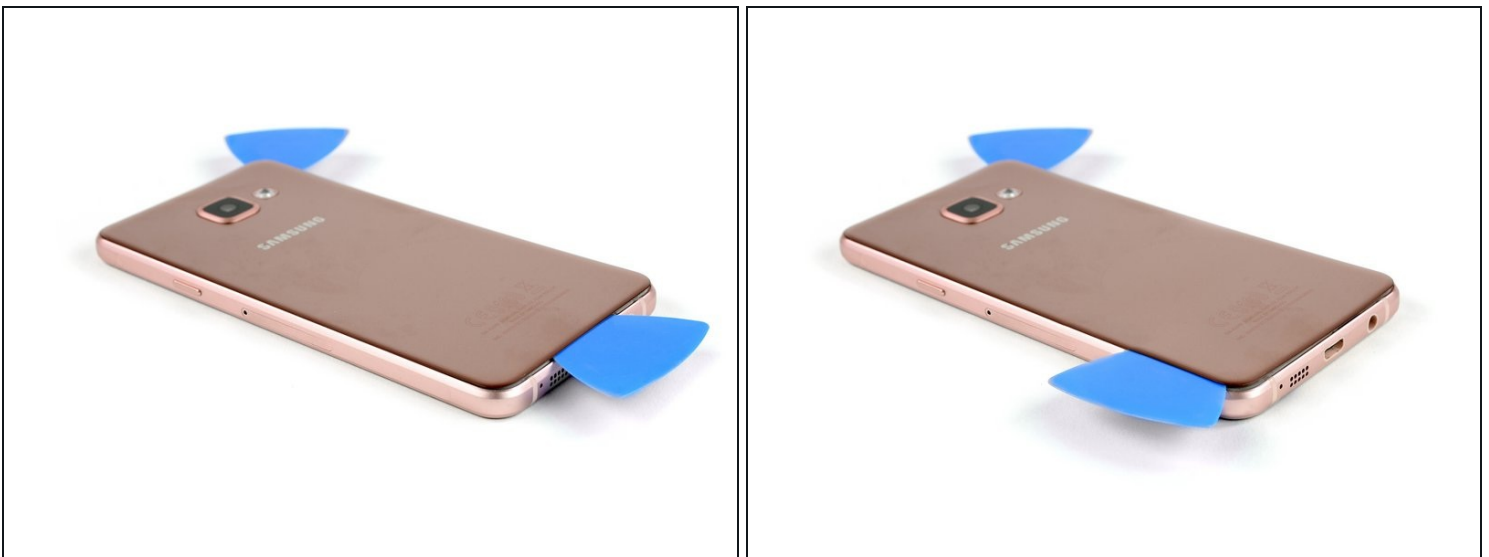
- Start by switching off your phone.
- [Take an iOpener](#) to heat up and soften the glue behind the back cover.
- Lift the bottom part of your back cover with a suction handle and insert an opening pick.

Step 2



- Slide the opening pick up to the rear camera to separate the back cover from the frame.

Step 3



- Insert a second opening pick and move around the other corner at the bottom part of the back cover.

Step 4



- Move the second pick along the left side of the back cover to loosen the adhesive.
- Move around the upper left corner and loosen the adhesive above the rear camera.
- After loosening all the edges and sides of the back cover [use an iOpener](#) to loosen the adhesive underneath the center of it.

Step 5



- Insert a [plastic card](#) at the bottom and slide it underneath the back cover.
- Separate the glue until you reach the rear camera.
- Now you can slowly lift up the back cover and finally remove it.

Step 6 — Display



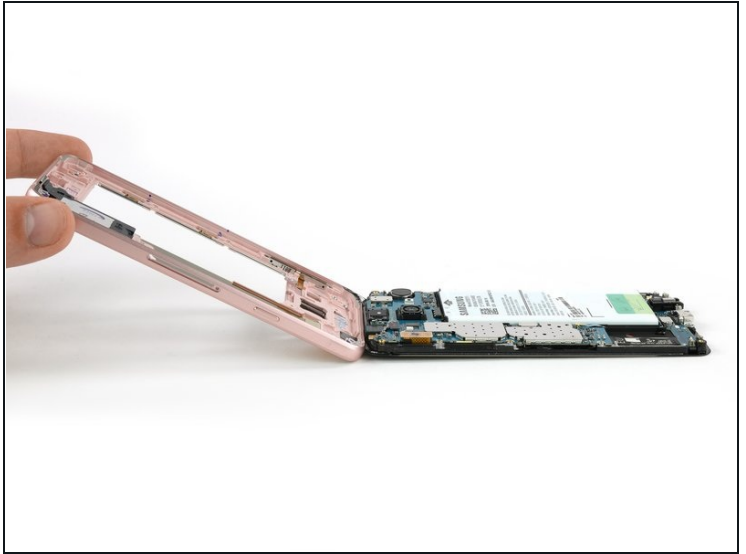
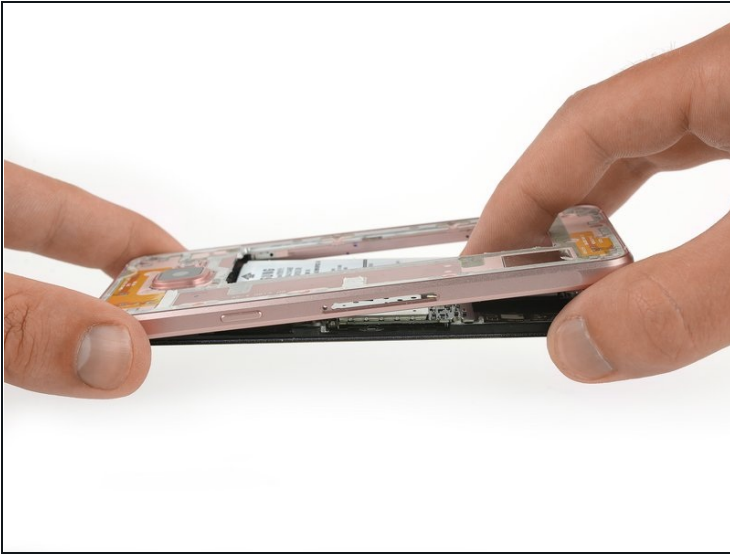
- Remove the SIM card tray.
- Remove the 16 Phillips #00 screws on the midframe.

Step 7



- [Use an iOpener](#) to loosen the adhesive around the mid frame.

Step 8



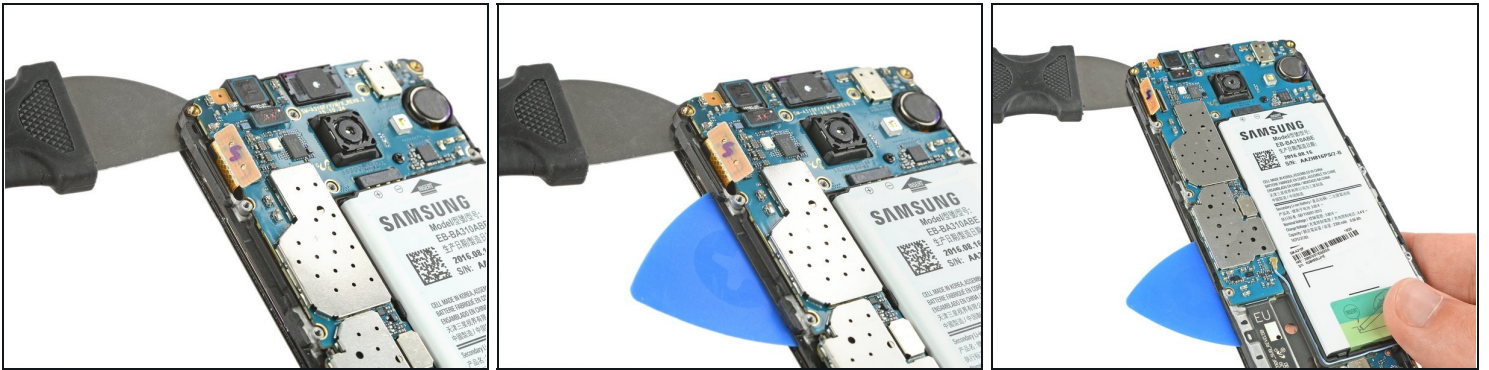
- Push the exposed part of the battery away from the midframe to separate the components.
- Remove the midframe.

Step 9



- With the flat end of a spudger disconnect the display cable.
- Heat up the glue behind the display with an iOpener.

Step 10



- Use a jimmy to get between the frame and the front panel.
- Pry up the display unit just a bit so you can put an opening pick behind the display.
⚠ Pay attention to the display cable.
- Slide down the side to separate the glue. At the bottom you can insert the opening pick further to keep the adhesive from resealing.

Step 11



- Repeat the same procedure on the other side.
- Here you can insert the opening pick as far as half of an inch to get the glue off behind the battery.
- ⚠ Be aware that the display cable runs along the top.
- Slide down to where the display ends.

Step 12



- Now slide along the bottom to get the glue off.

⚠ Be careful, there are two touch buttons on each side behind the front panel. In the middle only go as deep as where the home button begins.

Step 13



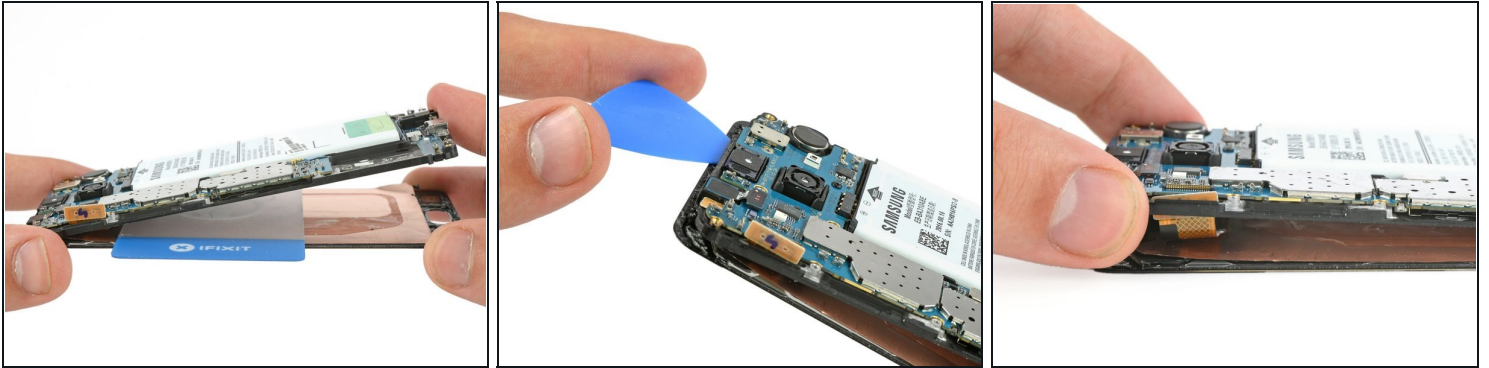
- [Re-heat](#) the display unit for the next few steps.

Step 14



- On the left hand side (where the motherboard sits) replace the opening pick with a [plastic card](#) to get to the glue behind the battery.
- Continue separating the adhesive until you reach the display cable.

Step 15



- Separate the display from the display frame and cut the remaining glue at the top with an opening pick.
- Carefully slide the display cable out of the slot in the display frame.
- ☑ Before you start reassembling plug the new display to the motherboard and perform a short test by powering on your phone. See if the display lights up and the touch works properly.
- ⓘ Remove any adhesive from the display and rear glass and reapply as necessary.

To reassemble your device, follow these instructions in reverse order. Reapply adhesive where necessary.