



LG VX6100 Main Display Replacement

This guide will go step-by-step through the...

Written By: Ryan Bishop



INTRODUCTION

This guide will go step-by-step through the process of accessing the phone's main display. Pictures and instructions accompany each step in the guide.

TOOLS:

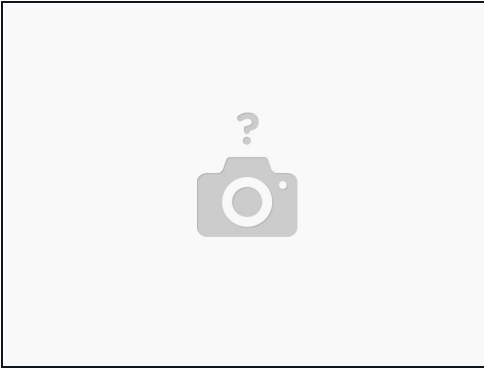
[Desoldering Braid](#) (1)
[Phillips #00 Screwdriver](#) (1)
[Large Needle Nose Pliers](#) (1)
[Push Pin](#) (1)
[Soldering Iron](#) (1)
[iFixit Opening Tool](#) (1)
[Tweezers](#) (1)

Step 1 — Battery



- Open the battery casing by pressing the gray "PUSH" button. Slide the back of the casing downward.

Step 2



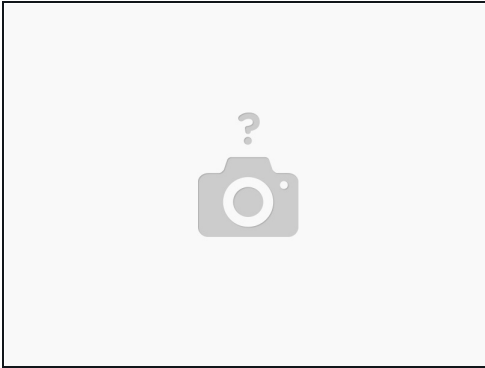
- Carefully remove the faulty battery from the back of the phone.
- Inspect the battery port to ensure the battery is the issue. Ensure the four gold connecting prongs are intact and are pointing straight into the port.

Step 3



- Align the gold prongs with the gold plates on the bottom of the battery. Make sure "This Side Up" is visible
- Push the battery flat against the back of the phone until it clicks into place.

Step 4



- Replace the back cover of the phone by sliding the casing down into place. Gently press the top until it clicks.
- Charge the device and turn it on to confirm the issue is resolved.

Step 5 — Front Case



- Remove the four grey plugs using either [tweezers](#) or a push pin.

Step 6



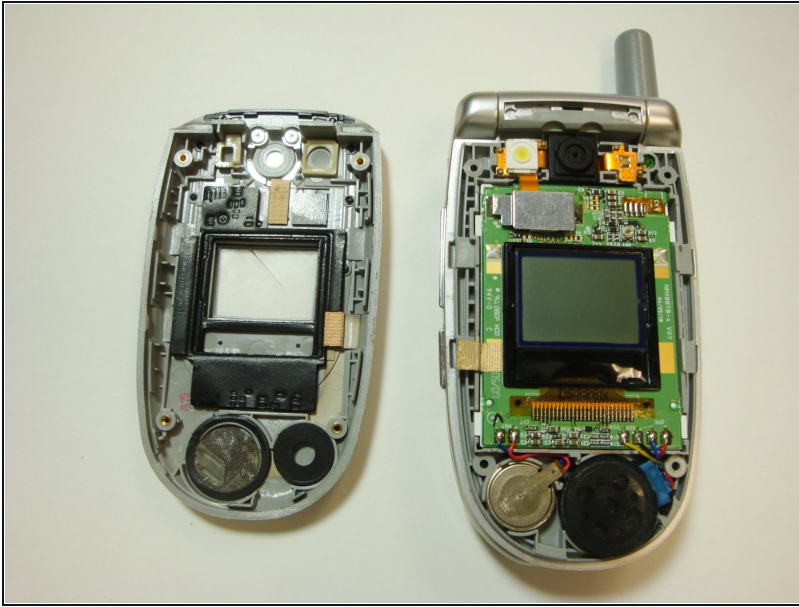
- Remove the four screws that are now exposed using a Phillips #00 screwdriver.
- ⓘ Be sure to put the screws in a safe place as they are very small and easy to lose.

Step 7



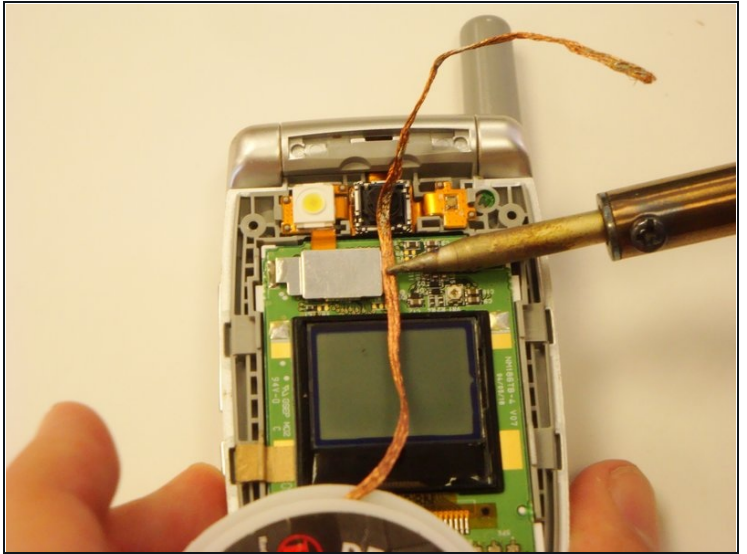
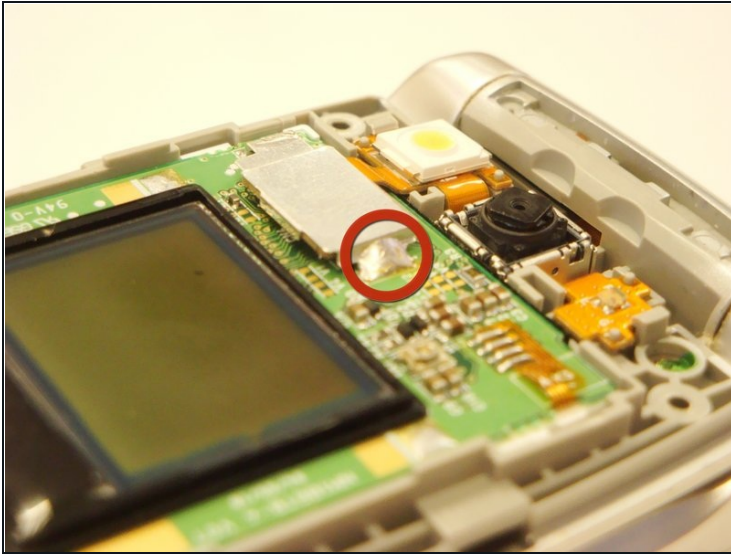
- Once all the screws have been removed, use a plastic opener tool to pry the case from the rest of the phone.
- Insert the opener tool into the seam between the case and the phone. Apply pressure to separate the two pieces.
- Do this across the entire length of the seam until the case is no longer attached to the phone.

Step 8



- The case can now be removed and the interior of the front is accessible.

Step 9 — Main Display

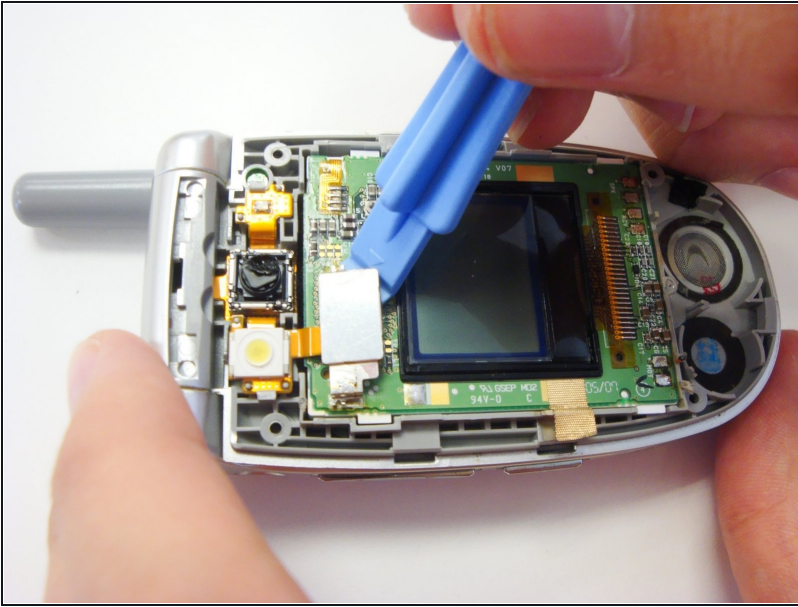


- Locate the solder on the side of the metal plate on the top half of the phone.
- Place a piece of solder wick on top of the solder.
- To [desolder](#) the connection, very carefully place the tip of the soldering iron on top of the solder wick. Hold it steady until the solder is soaked up into the solder wick.

⚠ The soldering iron will damage circuitry if held down for too long.

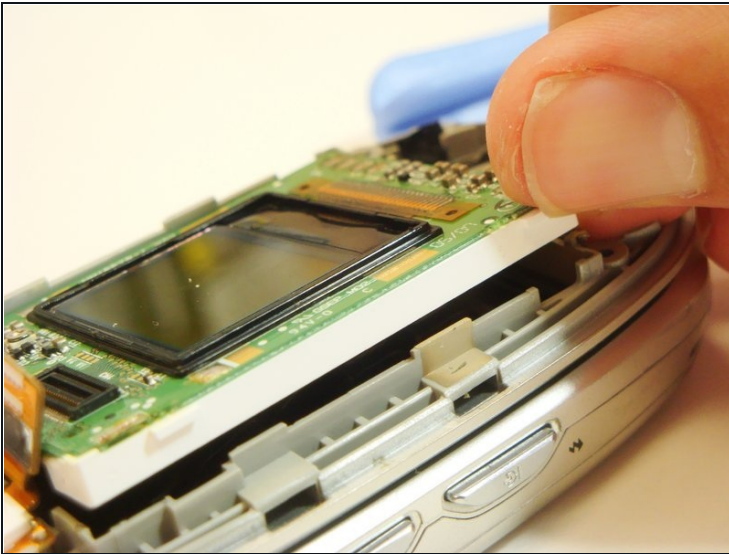
- Cut off the used solder wick with pliers and repeat this step if any solder remains.

Step 10



- After the solder has been removed, pry off the camera assembly connection shield with the plastic opening tool.

Step 11



- Remove the main display by lifting up the extruded white edge with your fingernail.

To reassemble your device, follow these instructions in reverse order.