



Microsoft Band 2 defective battery connection/ribbon Replacement

Fix for Band 2 power loss or failure to charge. More details & commentary at <https://band2repair.wordpress.com/>

Written By: Kirk McDermid



INTRODUCTION

This is a (pretty involved!) guide to completely removing & replacing your rubber strap, and repairing the power ribbon inside, to restore the connection to the battery. I don't think this guide is as good as the one I posted at <https://band2repair.wordpress.com/>, which has more room for commentary and images.

This repair is RISKY; it could ruin your Band 2. I only did it because my Band was unusable/ruined already, and there are no replacements available so it would be junk anyways.



TOOLS:

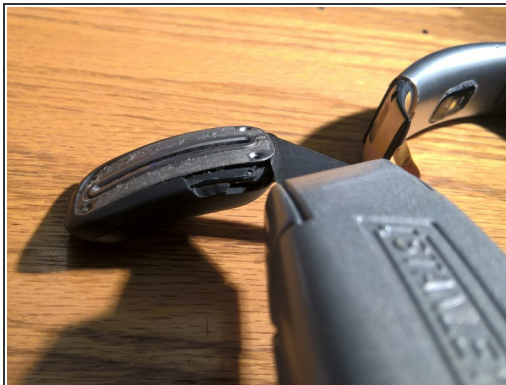
- [Utility Knife](#) (1)
- [iFixit Opening Tools](#) (1)
- [T3 Torx Screwdriver](#) (1)
- [leather needle](#) (1)
- [waxed thread](#) (1)
- [Leather Glue](#) (1)
- [Portable Soldering Iron](#) (1)
- [short copper wire \(<AWG30, 1" at most\)](#) (1)
- [Sugru](#) (1)

Step 1 — defective battery connection/ribbon



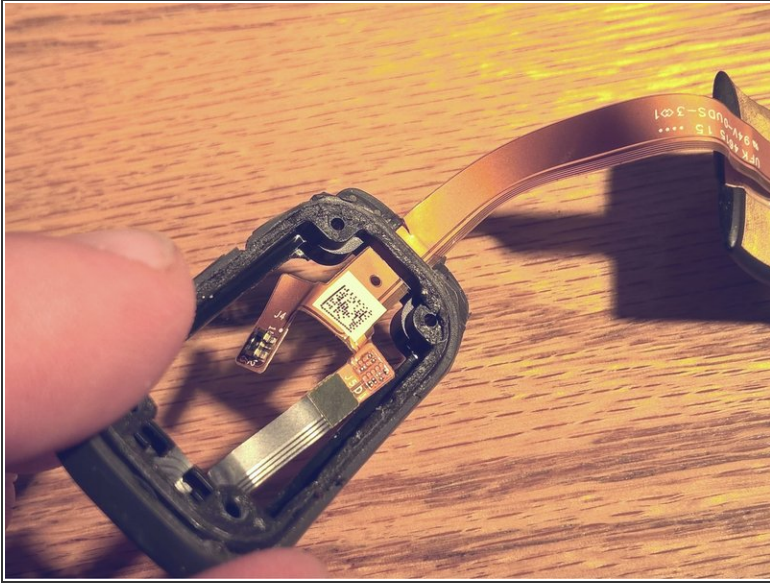
- Carve away **almost** all of the rubber of the straps. (Leave the rubber surrounding the battery/heart rate clasp end.)

Step 2



- Partly disassemble the battery clasp end: pry up the silver clasp face that is taped down, unscrew the four T3 Torx , remove that cover, remove the battery

Step 3



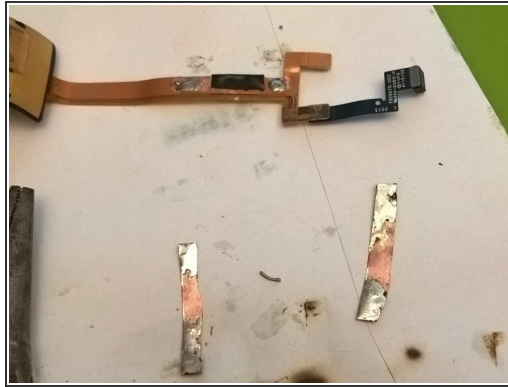
- Remove the plastic 'sandwiching' the ribbon as it travels into the clasp end, with a Dremel or knife. (Picture 2 illustrates the removed plastic.)

Step 4



- Sand the ribbon to expose the conductors on both sides. Be careful to keep the insulator in between the two conductors intact, so they don't short. The second picture shows a 10x image of the layers of copper and insulator.

Step 5



- Wrap the repaired break with insulating tape. Sand away outer insulator on both sides to make soldering locations for jumper strips.

Step 6



- Use Sugru to wrap/stabilize the repair and integrate it into the clasp end's rubber.

Step 7



- Drill two holes into clasp-end plastic tabs, and two holes on each side of watch face's 'shoulders', as anchor points for thread to fasten strap leather. (Hole locations are the black dots on the gold metal near the silver casing.)

Step 8



- Build new leather straps; fasten using thread through holes & glue.

Your Rand 2 should (!) hold a charge now. Not sure how durable this repair is.