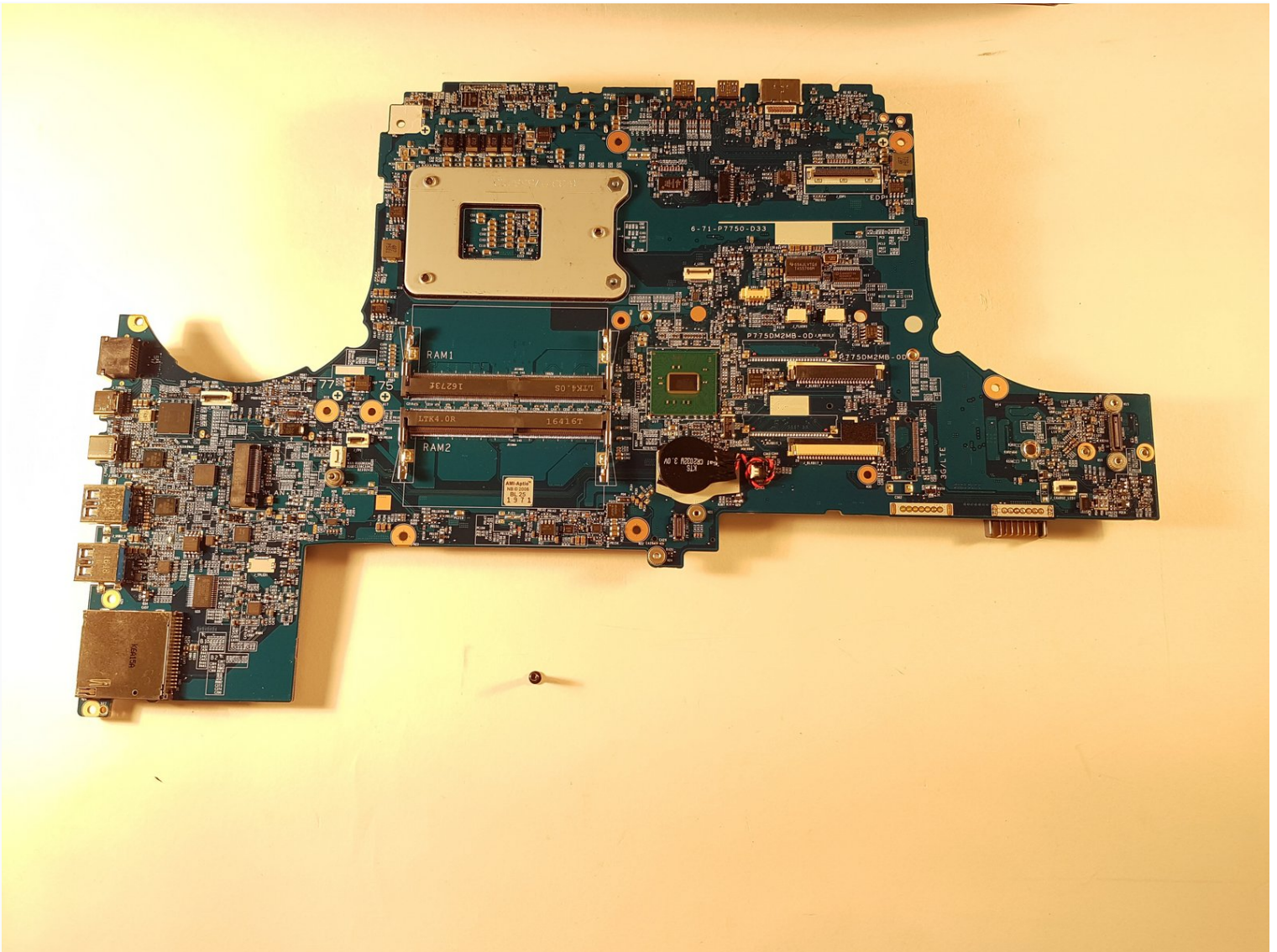




# P775DM3 Motherboard replacement

Written By: Felice Suglia





## TOOLS:

Tournevis cruciforme #0 (1)

Pincettes de précision (1)

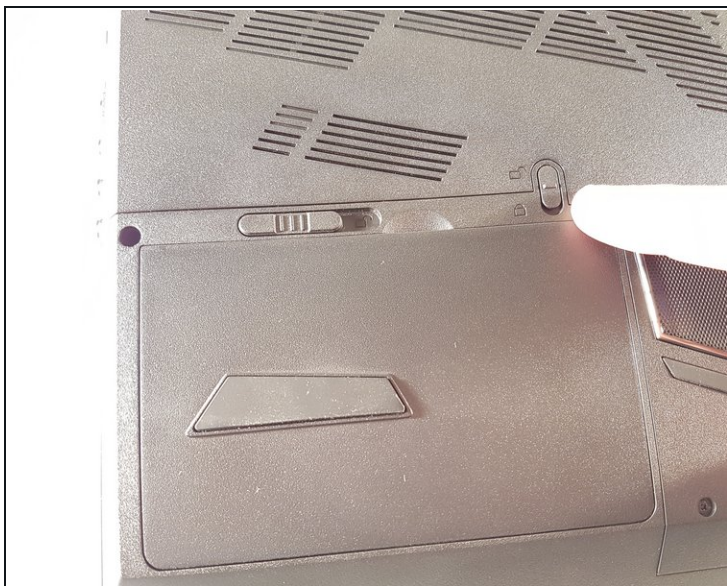
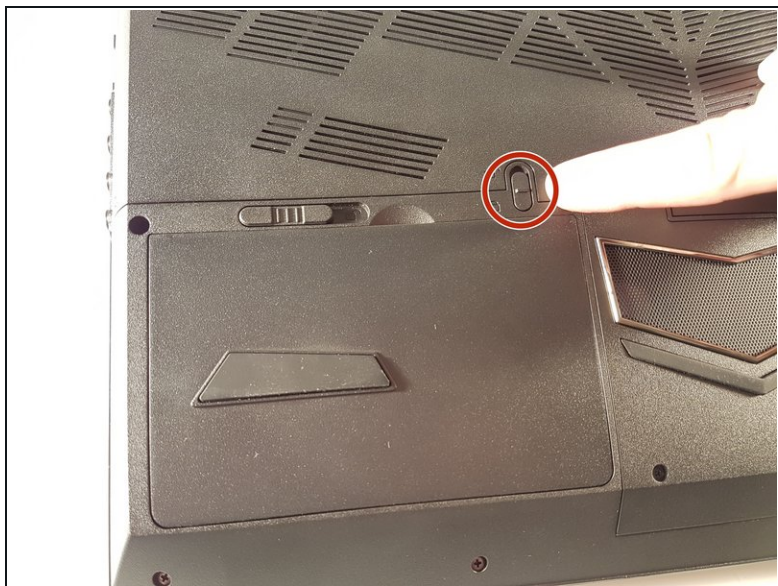


## PARTS:

Pièces pour why! P775DM3 CH (1)

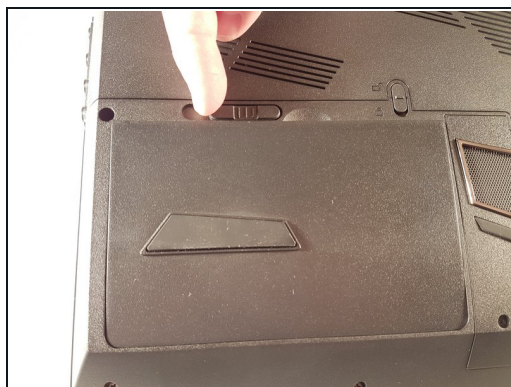
Pièces pour why! P775DM3 EU (1)

### Step 1 — Battery



- Unlock the lock circled in red.

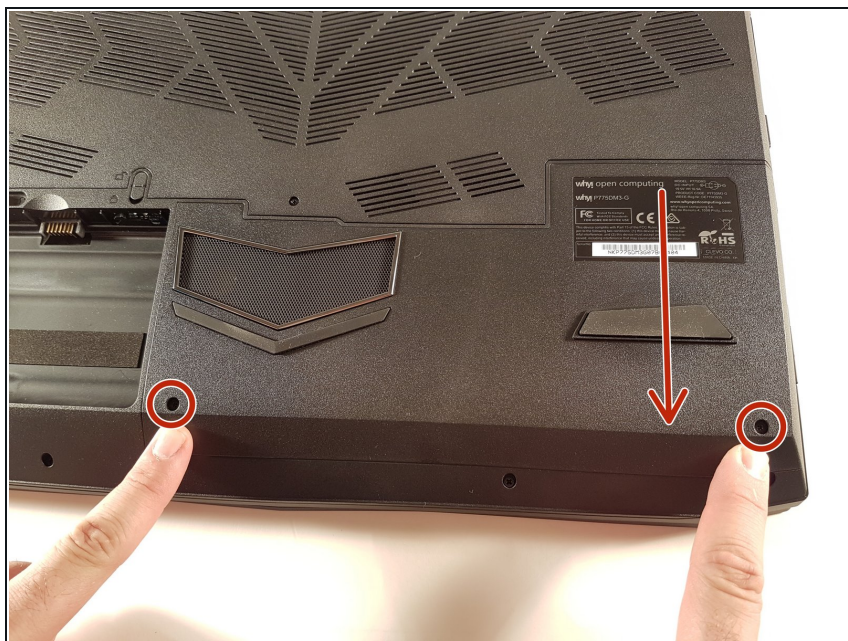
### Step 2



- Lift the battery while unlocking the lock circled in red.



### Step 3 — Disk access



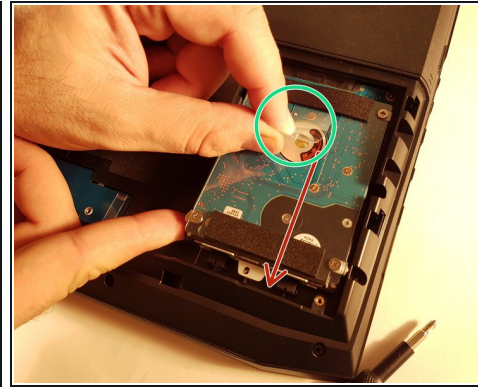
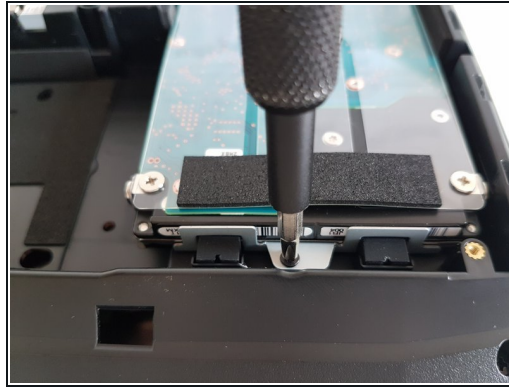
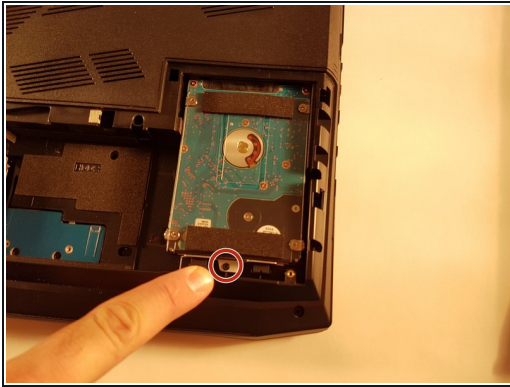
- Unscrew the two screws circled in red.
- Slide the plate in the direction of the arrow.

### Step 4



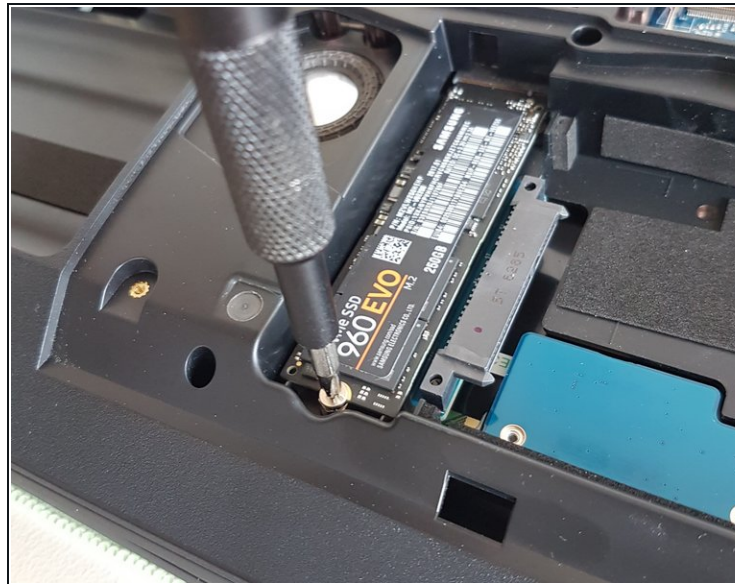
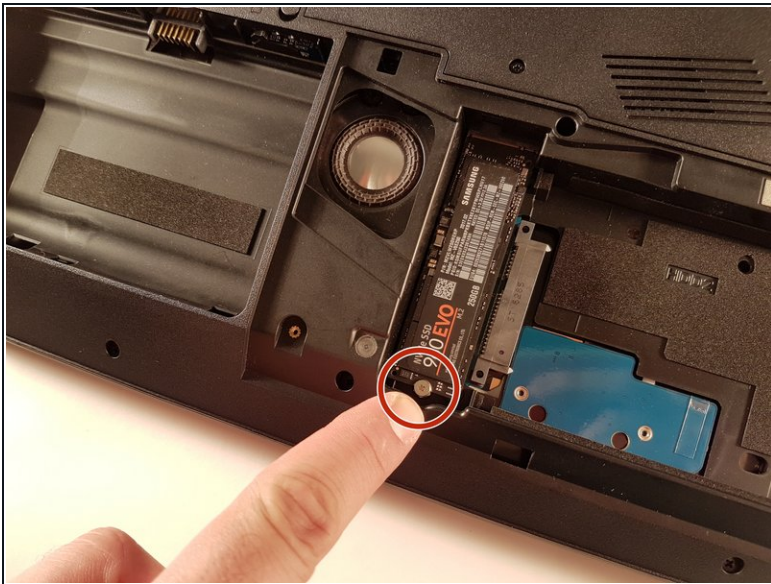
- Lift the plate

## Step 5 — Hard Disk Drive



- Unscrew the screw circled in red.
- Lift the disk with the green tab.
- Remove the disk in the direction of the arrow.

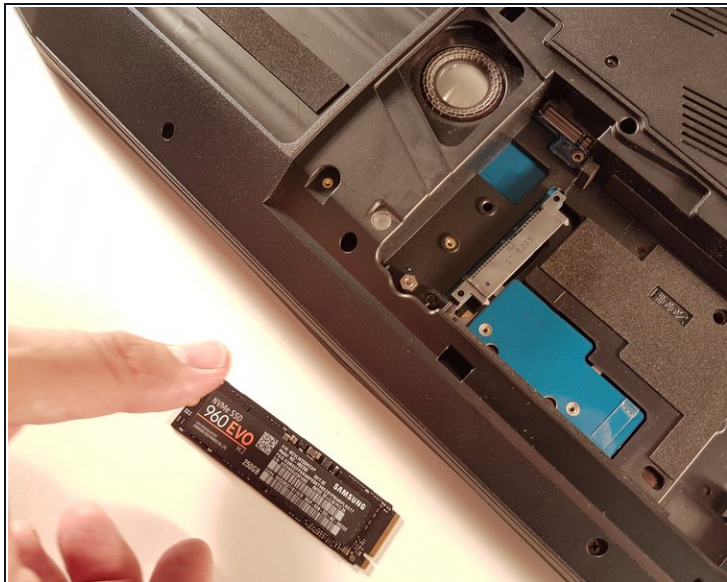
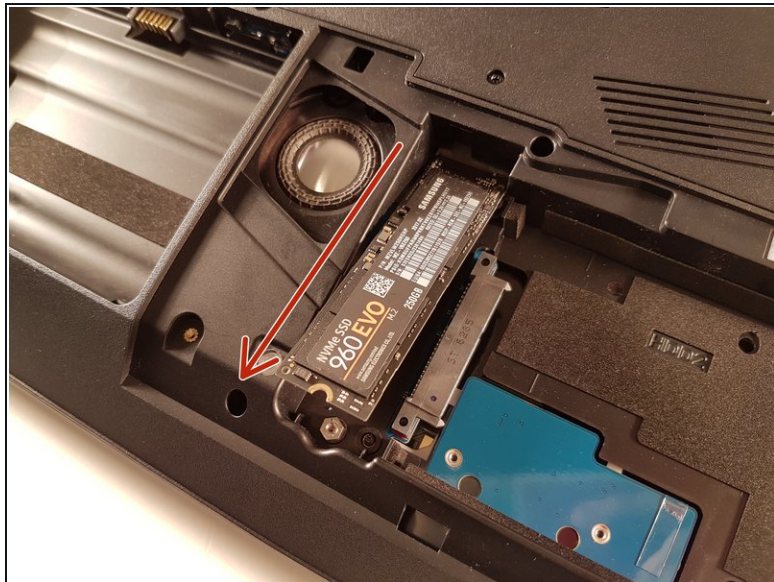
## Step 6 — M.2 SSD



- Unscrew the screw circled in red.



## Step 7



- Pull the SSD in the direction of the red arrow.

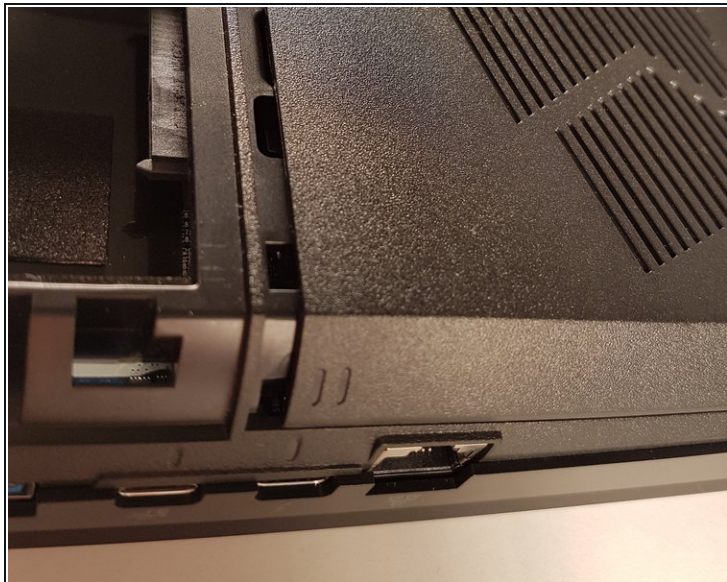
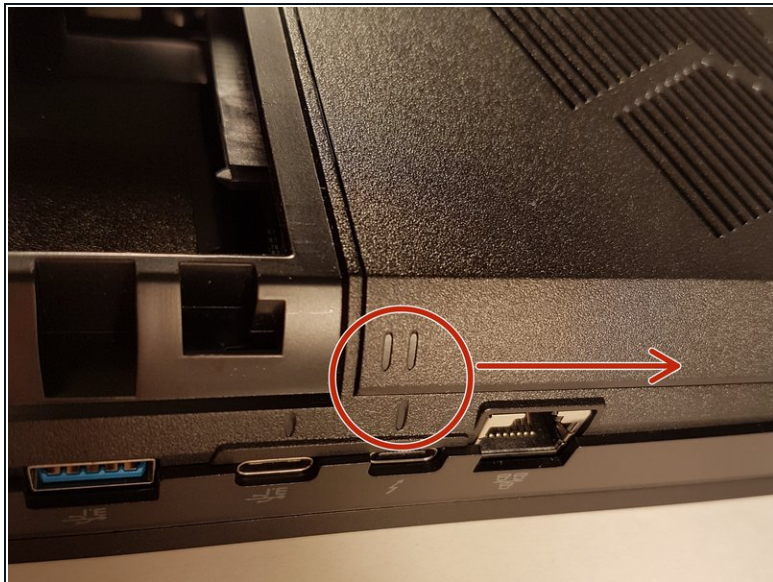
## Step 8 — Access to major components



- Unscrew the five screws circled in red.

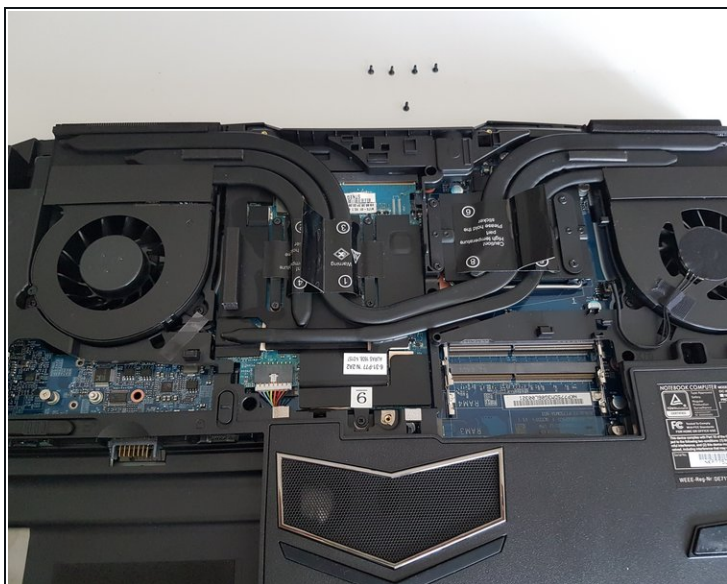


## Step 9



- Slide the plate in the direction of the red arrow.

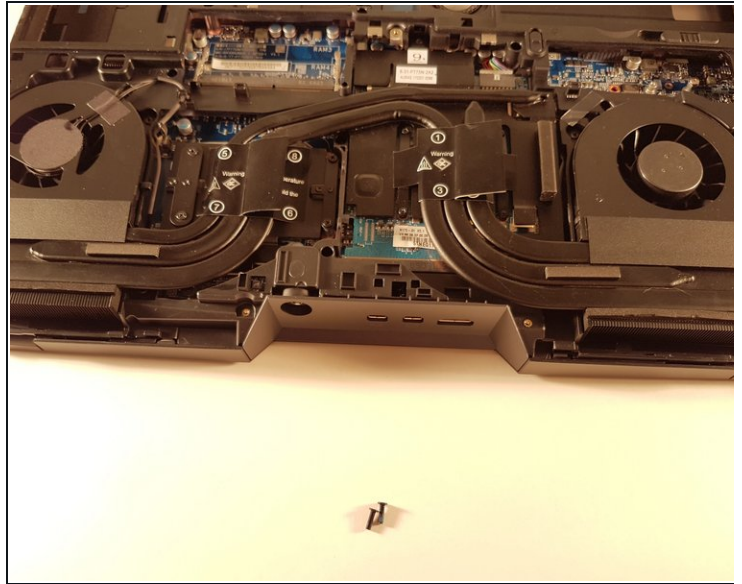
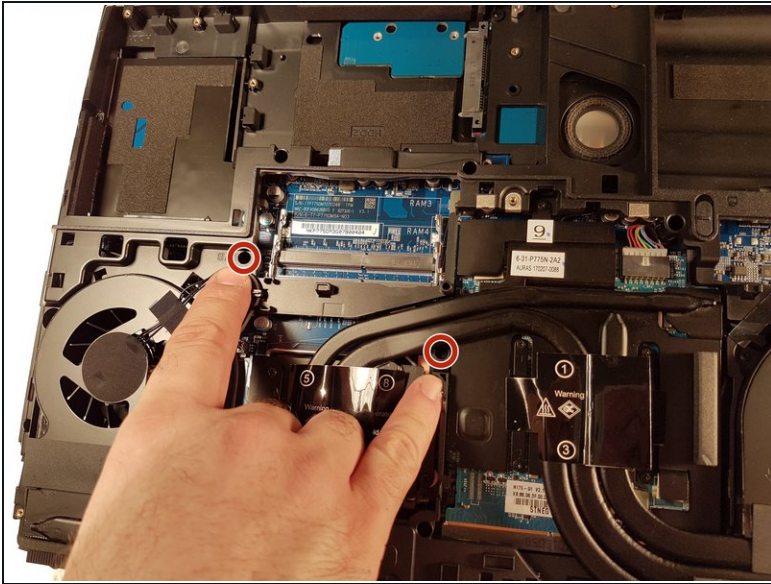
## Step 10



- Lift the plate.

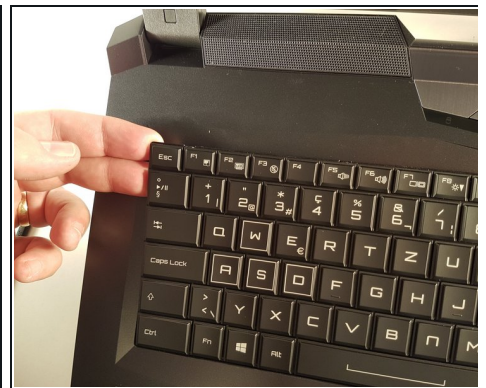
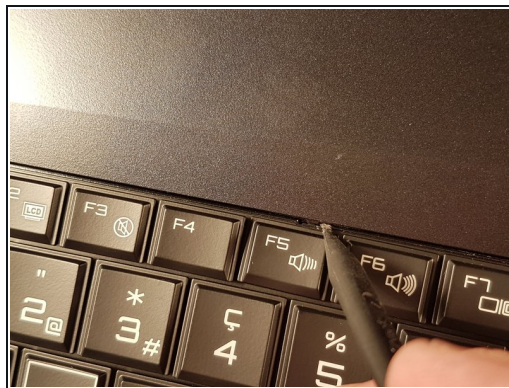
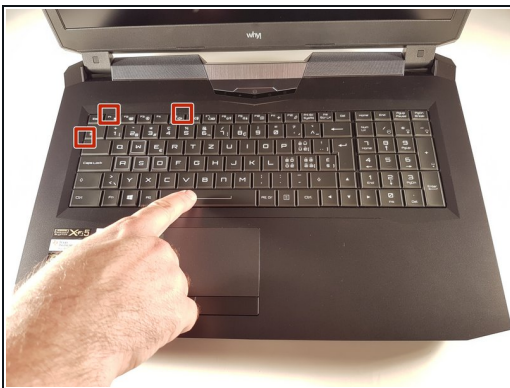


## Step 11 — Keyboard



- Unscrew the two screws circled in red

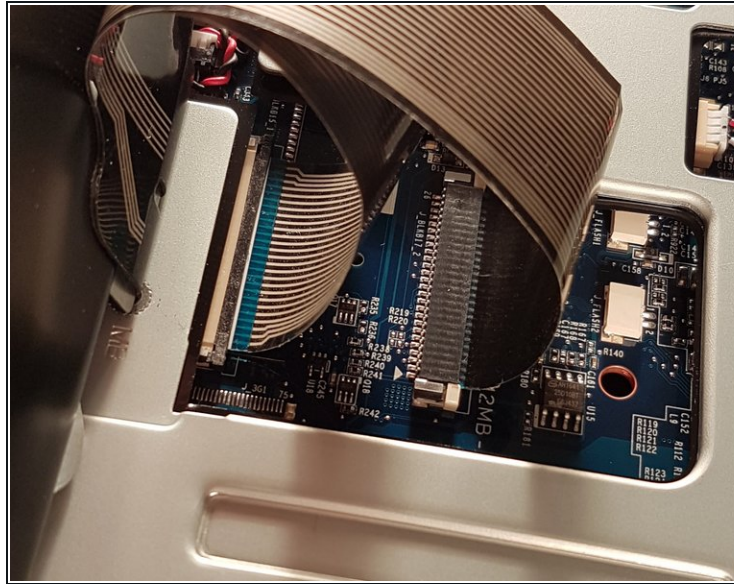
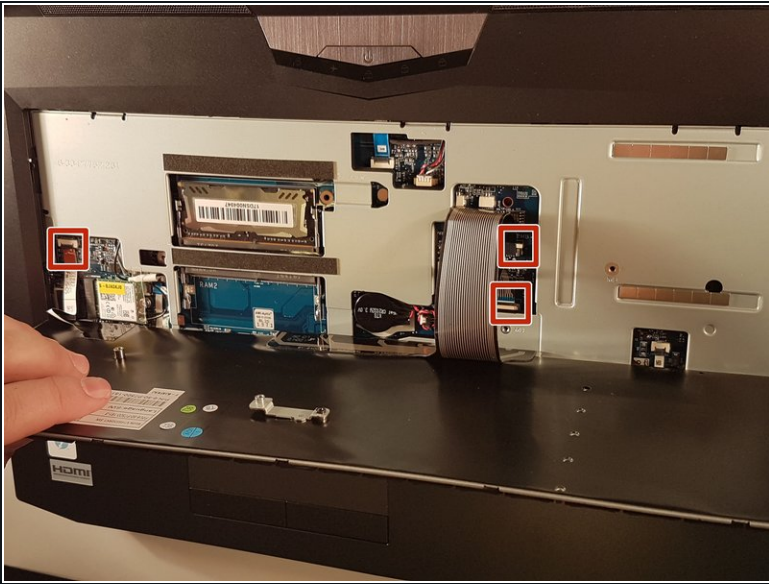
## Step 12



- Press a paper clip in the three places marked in red
- Lift the keyboard and feel free to put some strength

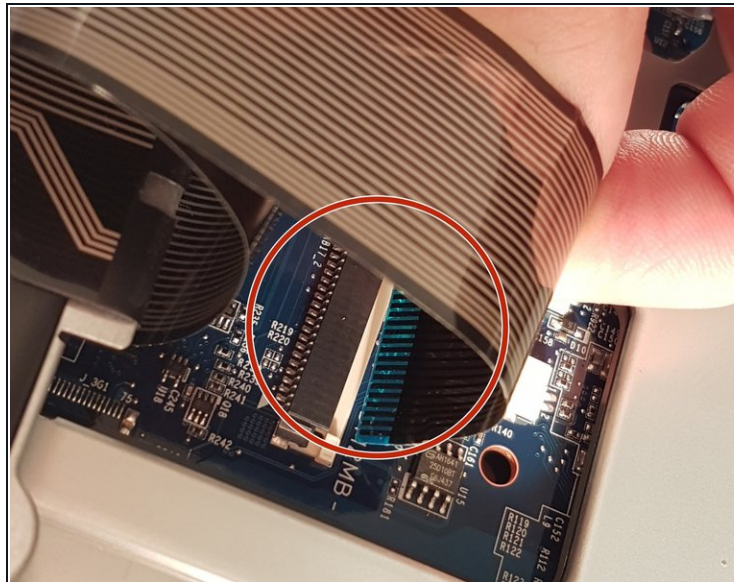
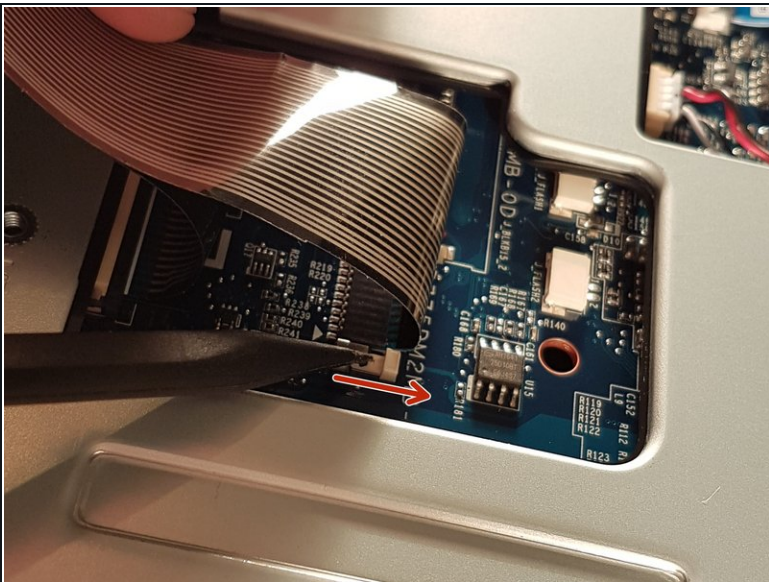


## Step 13



- Disconnect the three framed connectors in red

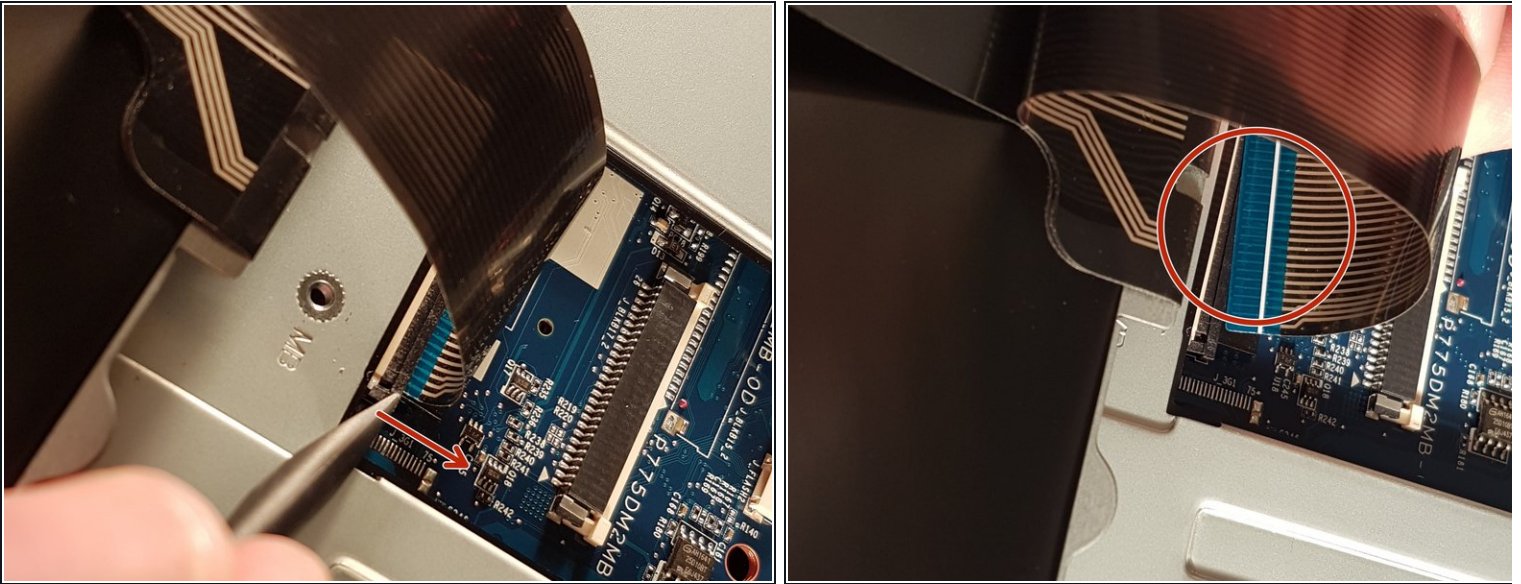
## Step 14



- Pull the white drawer in the direction of the arrow to unlock the connector
- Disconnect the red circled connector

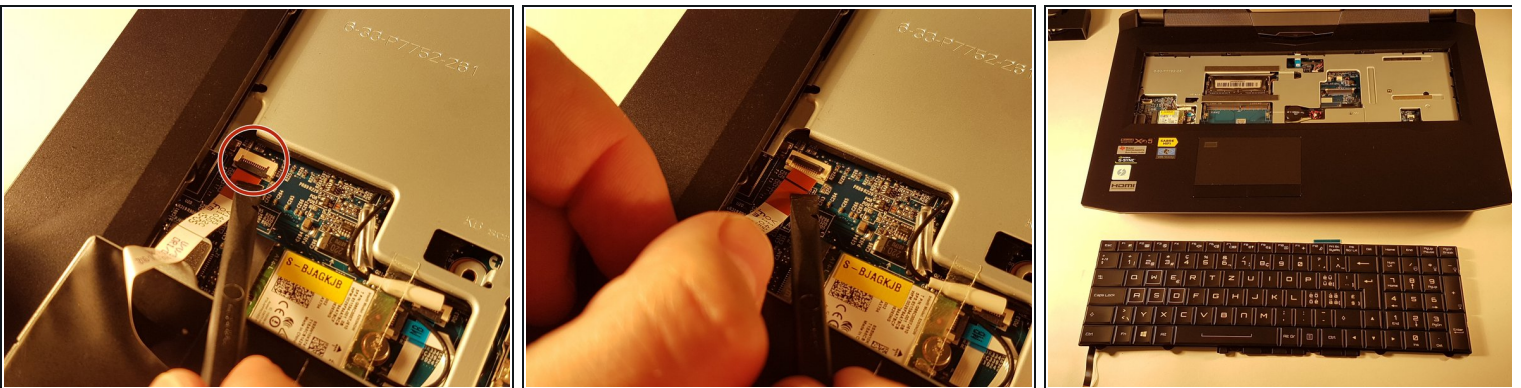


## Step 15



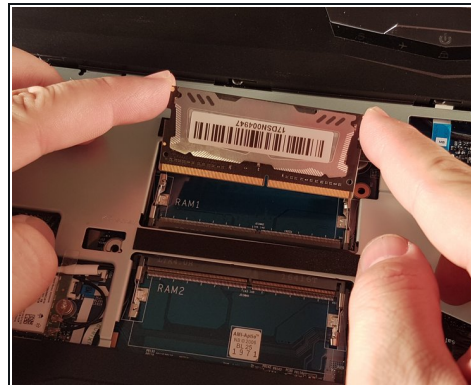
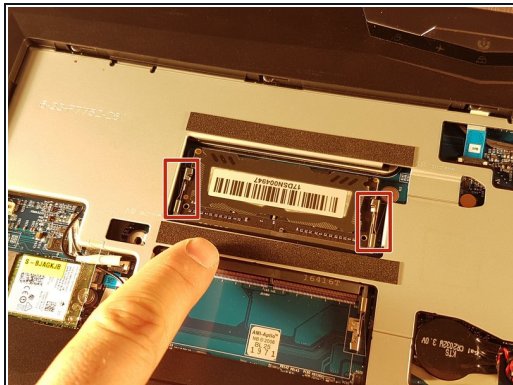
- Pull the black drawer in the direction of the arrow to unlock the connector
- Disconnect the red circled connector

## Step 16



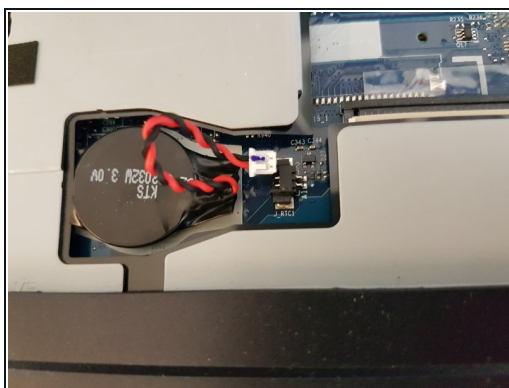
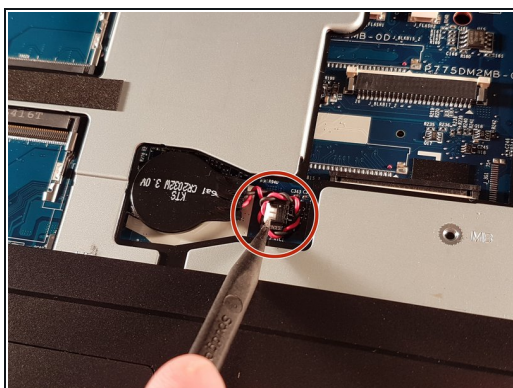
- Lift the flap that holds the connector circled in red
- Disconnect the red circled connector
- Remove the keyboard

## Step 17 — RAM



- Spread the two clips in red.
- Remove the RAM card.

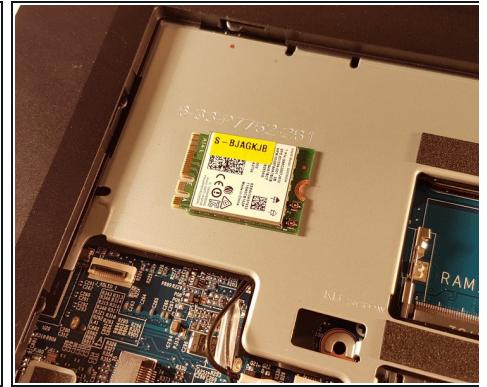
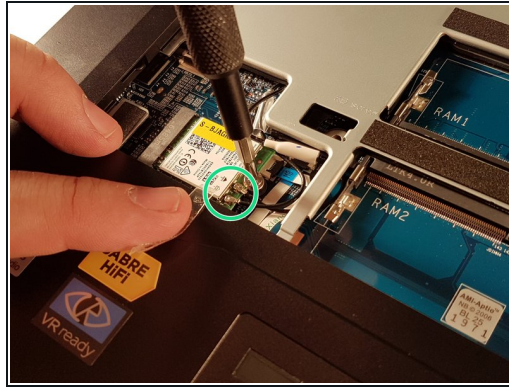
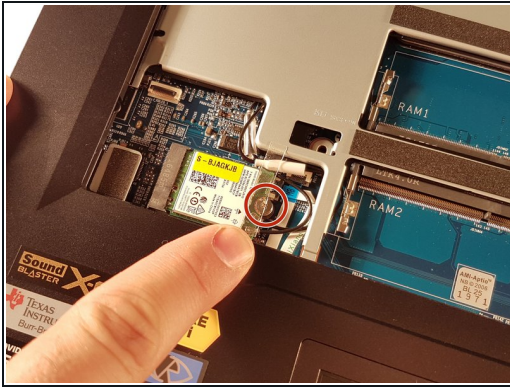
## Step 18 — BIOS Battery



- Disconnect the connector circled in red.
- Remove the battery.

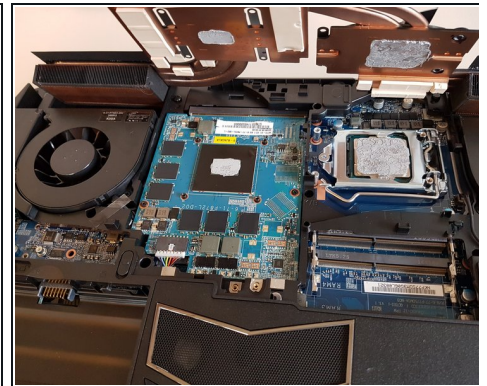
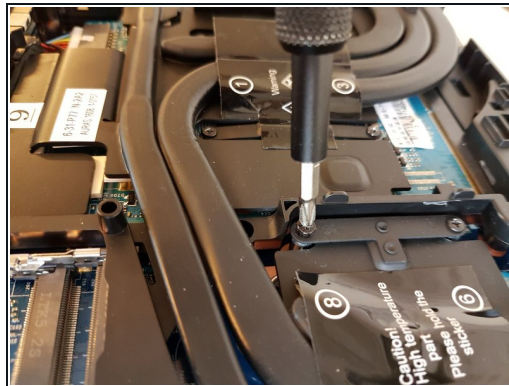
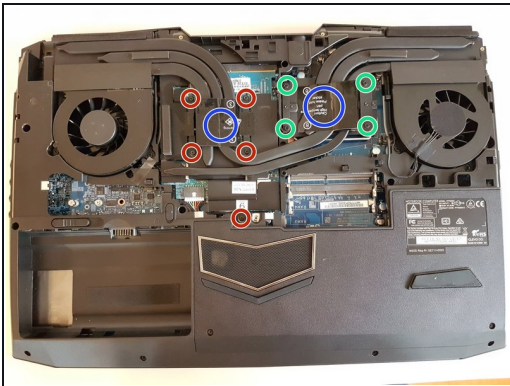


## Step 19 — WLAN card removal



- Unscrew the screw circled in red.
- Disconnect the two connectors circled in green.
- Remove the WLAN card.

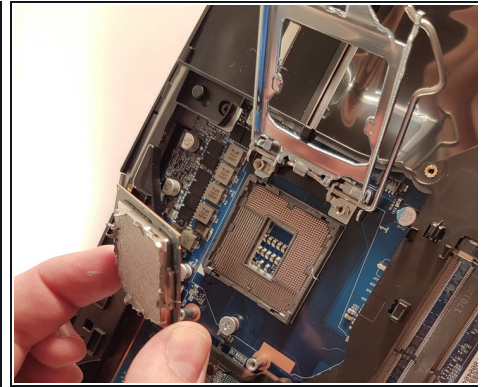
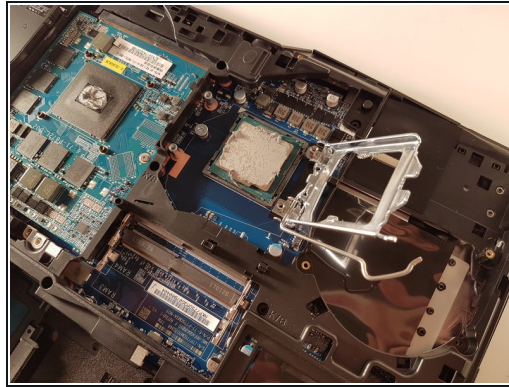
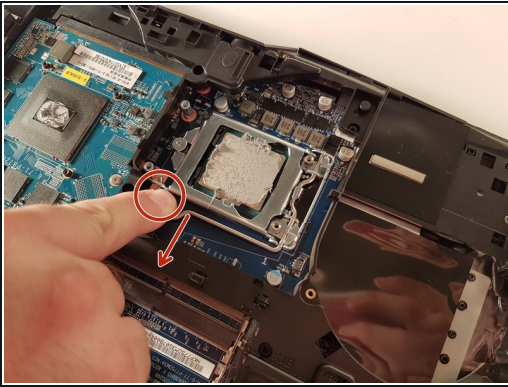
## Step 20 — Cooler



- Unscrew the four large screws circled in green
- Unscrew the five small screws circled in red
- Lift the cooler with the two tabs circled in blue



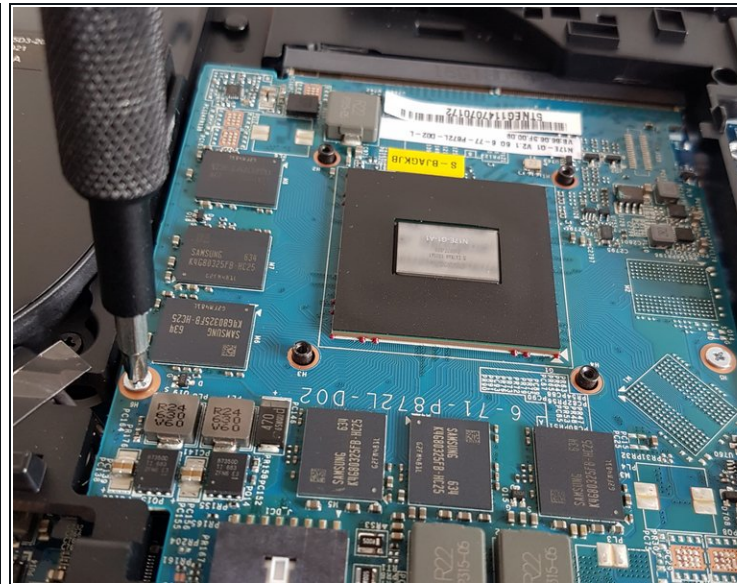
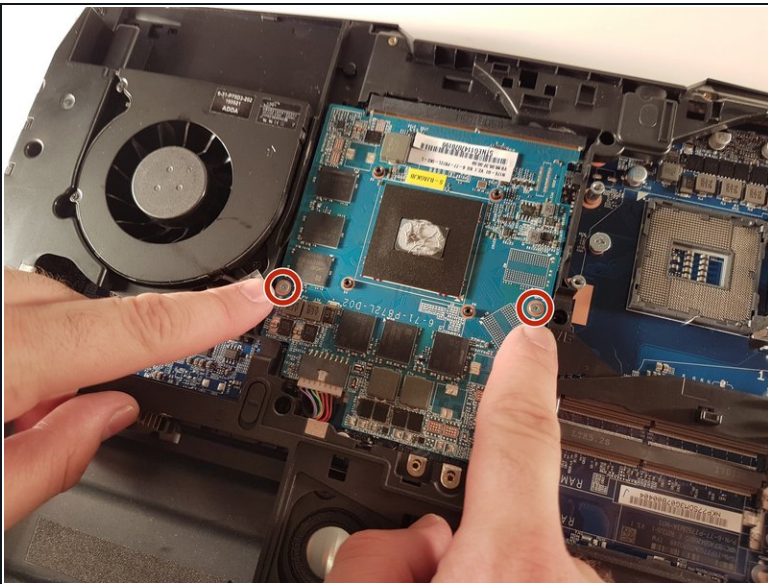
## Step 21 — CPU



- Pull the lever circled in red in the direction of the red arrow while pressing on it.

⚠ Attention: Don't touch the underside of the processor, pick it up from the sides.

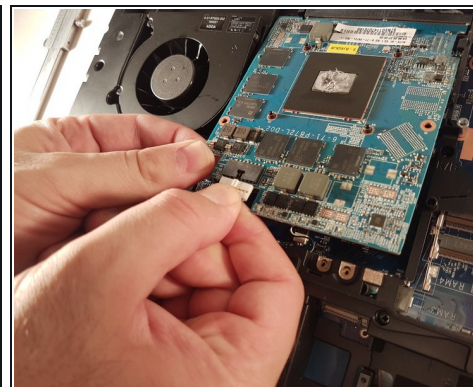
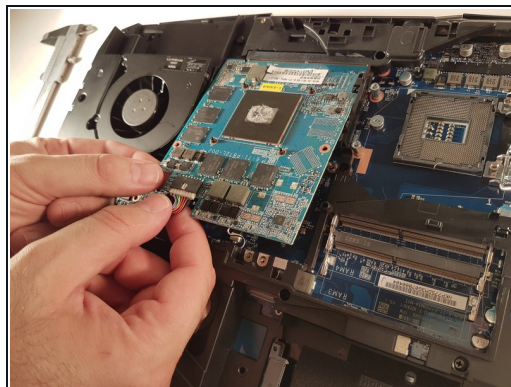
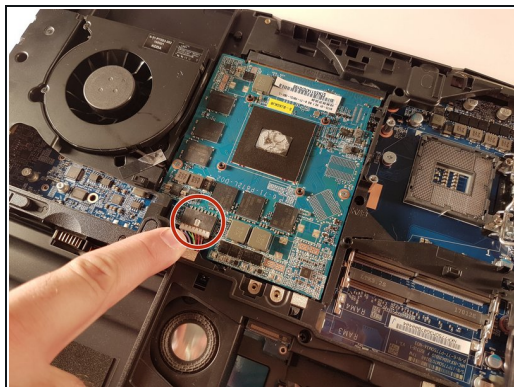
## Step 22 — GPU



- Unscrew the two screws circled in red

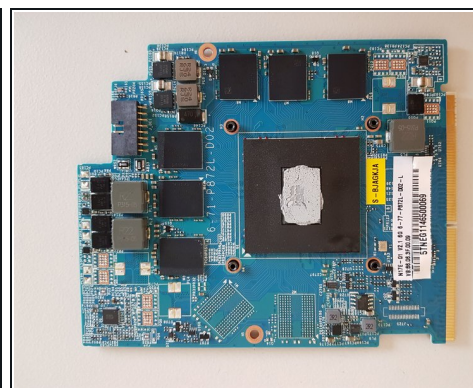


## Step 23



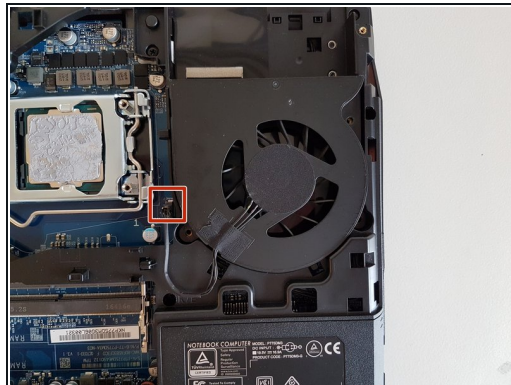
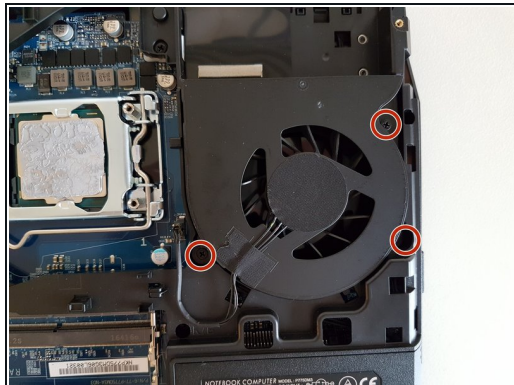
- Lift the card to allow access to the red circled connector
- Disconnect the red circled connector

## Step 24



- Pull it in the direction of the red arrow

## Step 25 — Fans



- Unscrew the three screws circled in red.
- Disconnect the framed connector in red.

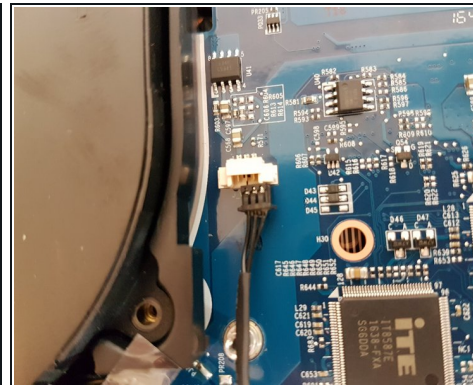
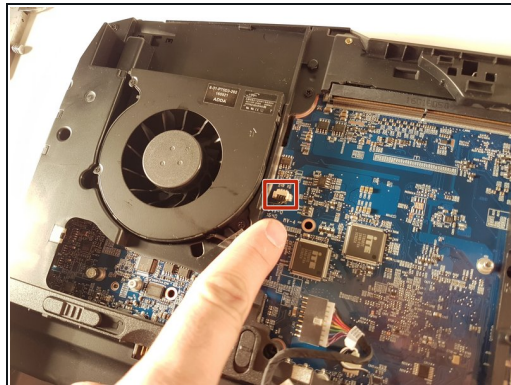
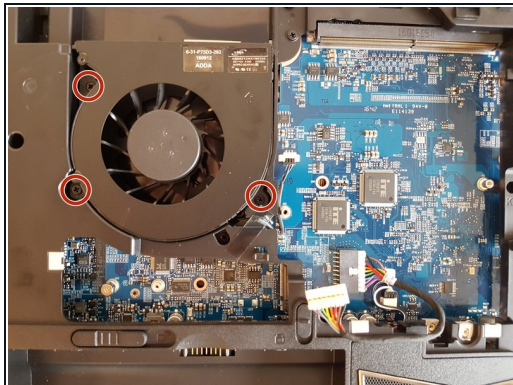
## Step 26



- Remove the fan.



## Step 27



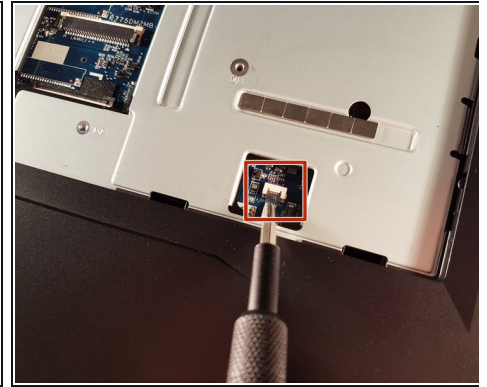
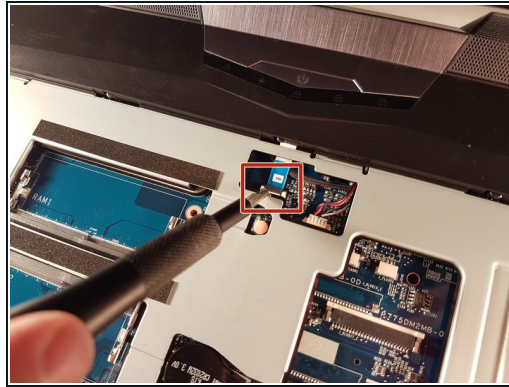
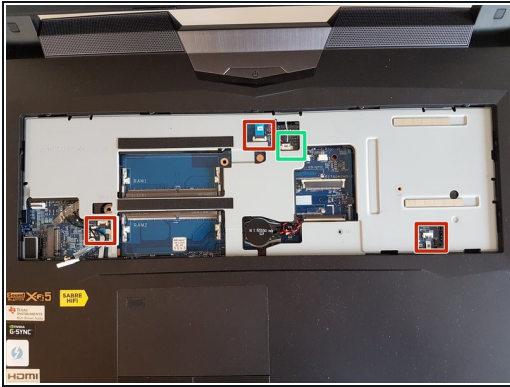
- Unscrew the three screws circled in red.
- Disconnect the framed connector in red.

## Step 28



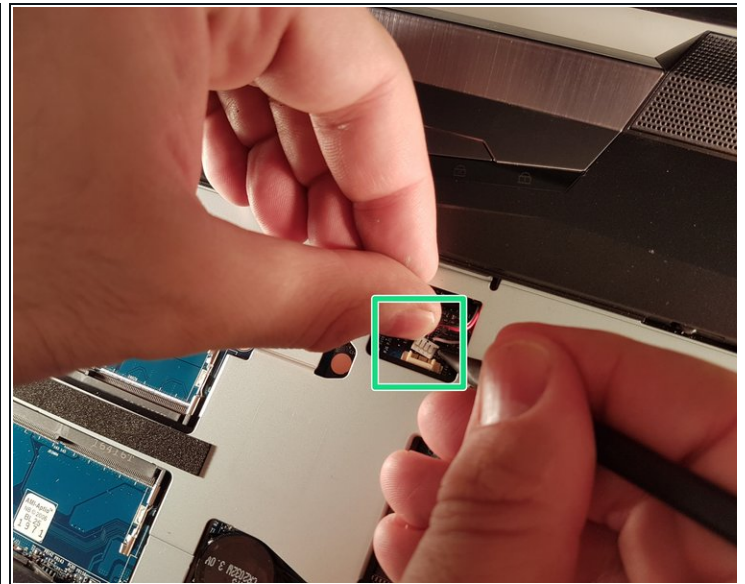
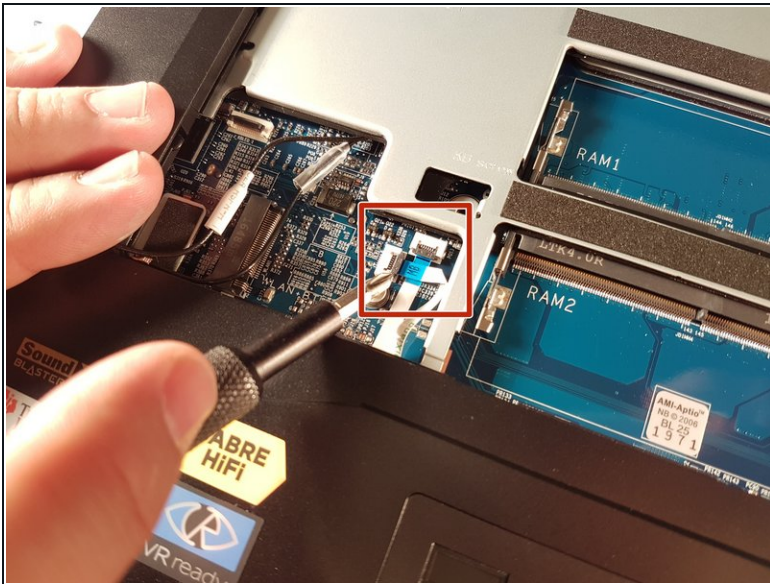
- Lift the fan.

## Step 29 — Motherboard



- Lift the flap that holds the two connectors framed in red.
- Disconnect the two framed connectors in red.

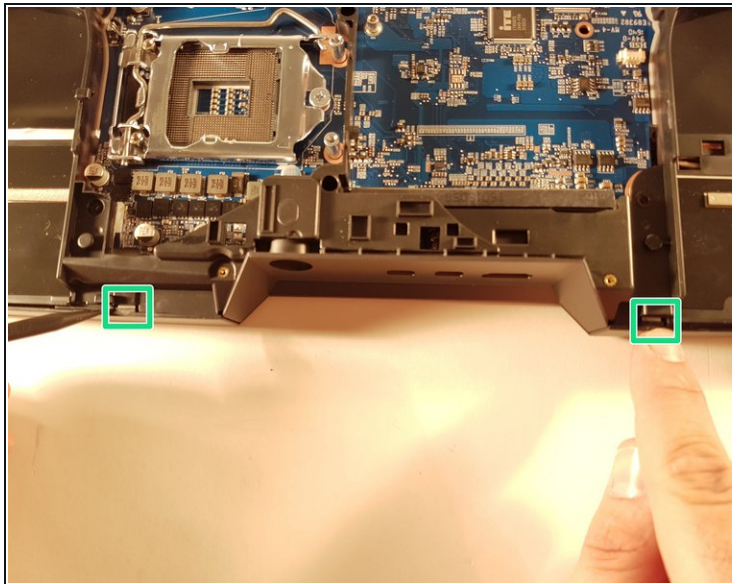
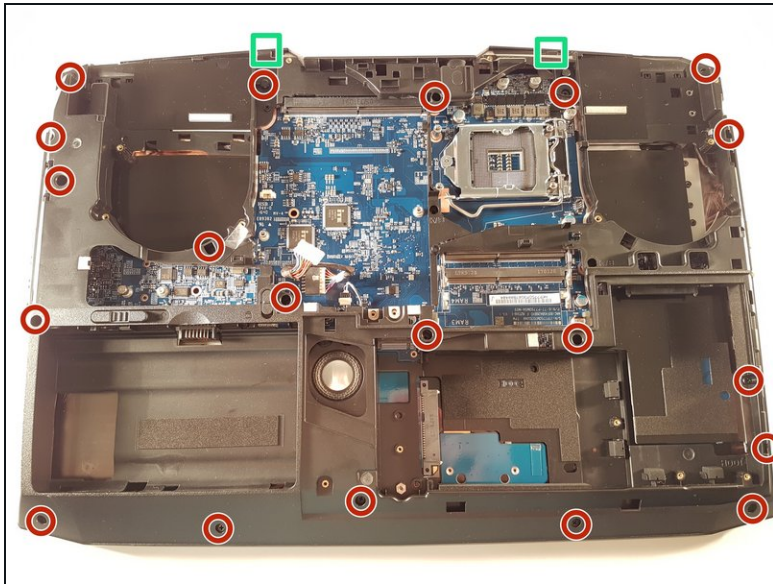
## Step 30



- Lift the flap that holds the two connectors framed in red.
- Disconnect the two framed connectors in red.
- Disconnect the box connector in green.

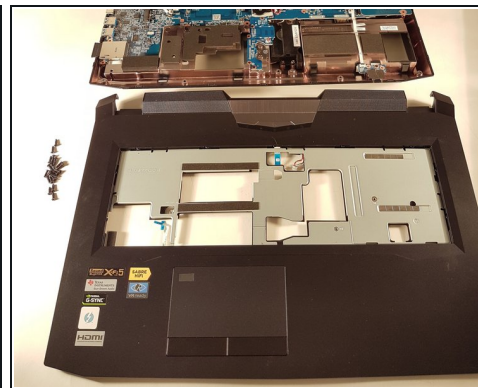
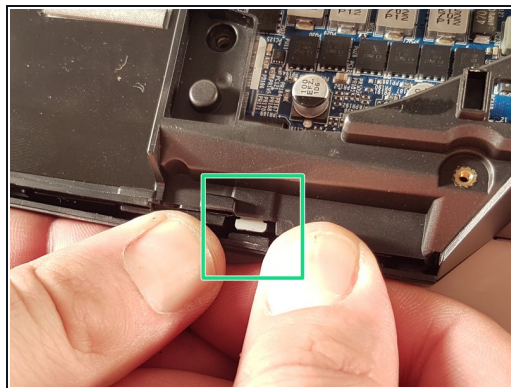
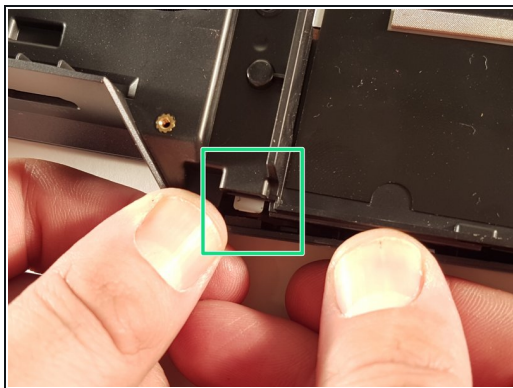


## Step 31



- Unscrew the twenty screws circled in red.
- Unclip the edge of the case at the two places framed in green.

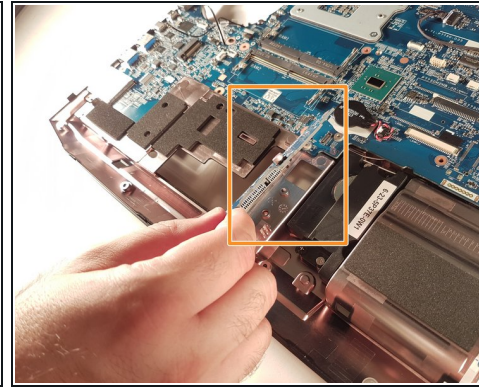
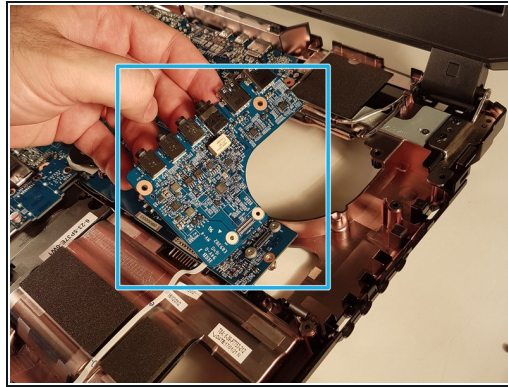
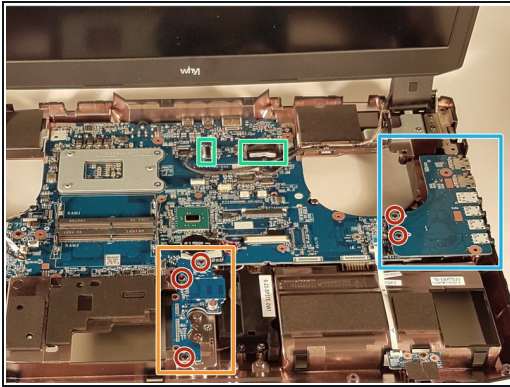
## Step 32



- Unclip the edge of the case at the two places framed in green.
- Remove the top of the case.

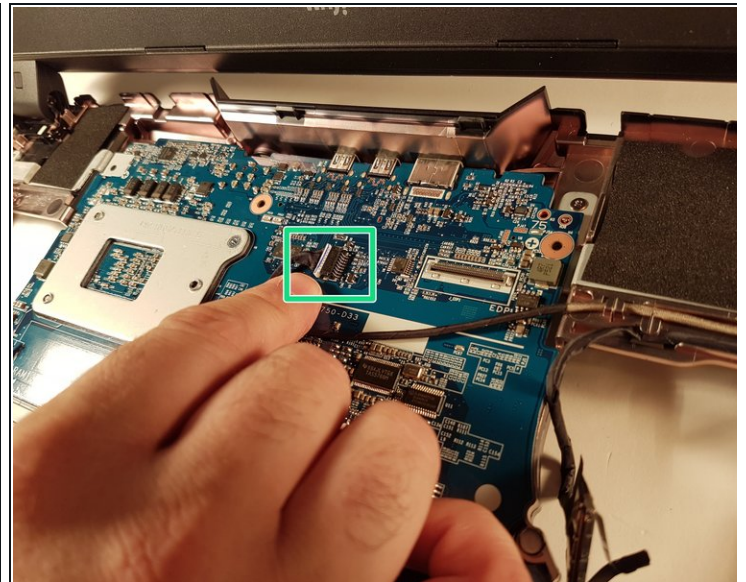
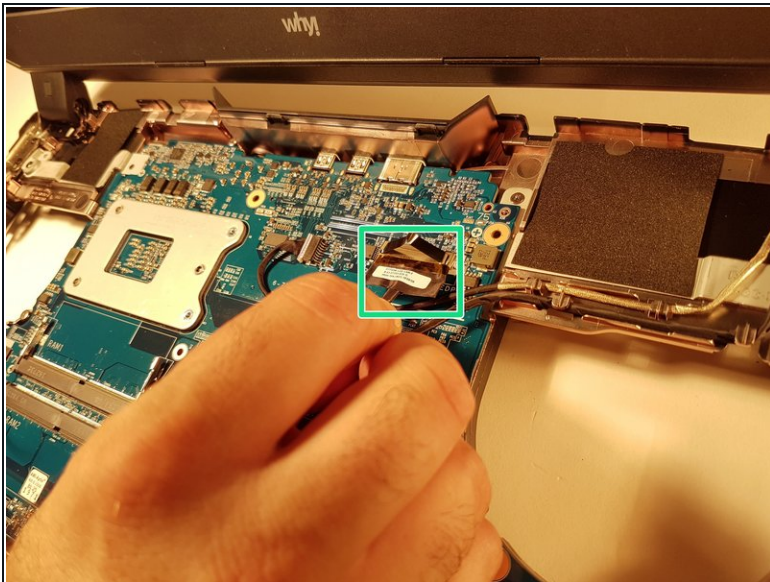


## Step 33



- Unscrew the five screws circled in red.
- Remove the framed card in blue.
- Remove the framed card in orange.

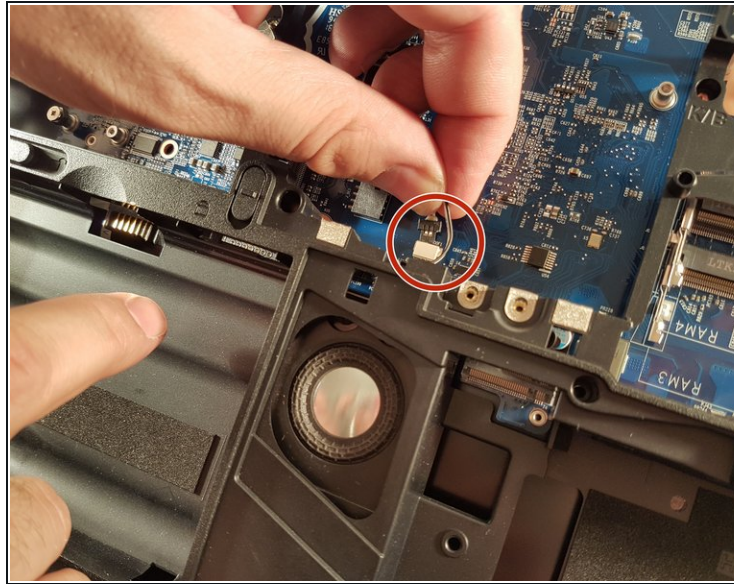
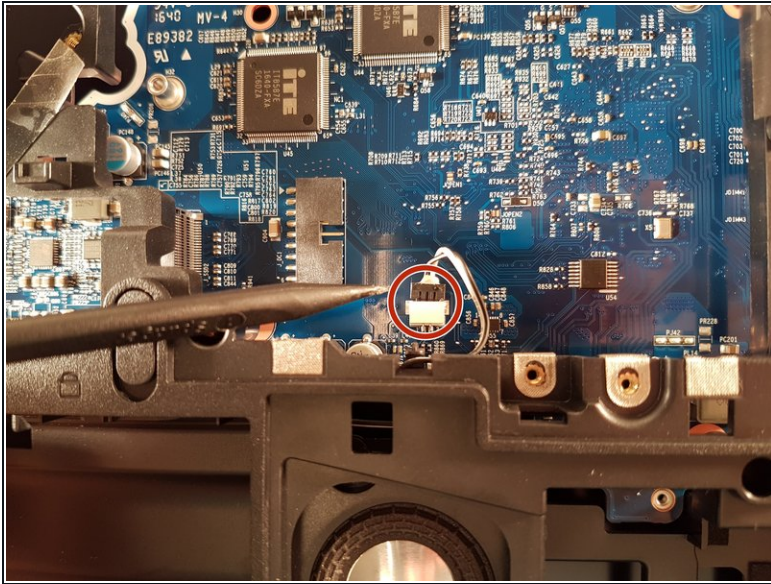
## Step 34



- Disconnect the two framed connectors in green.

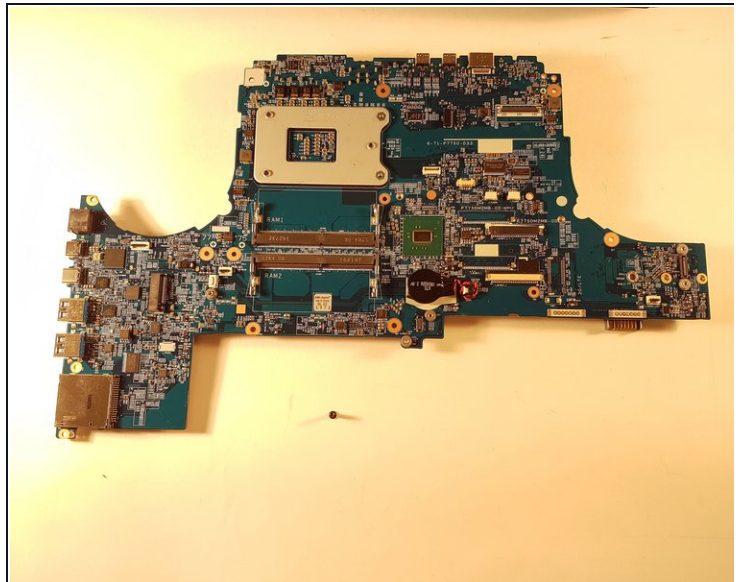
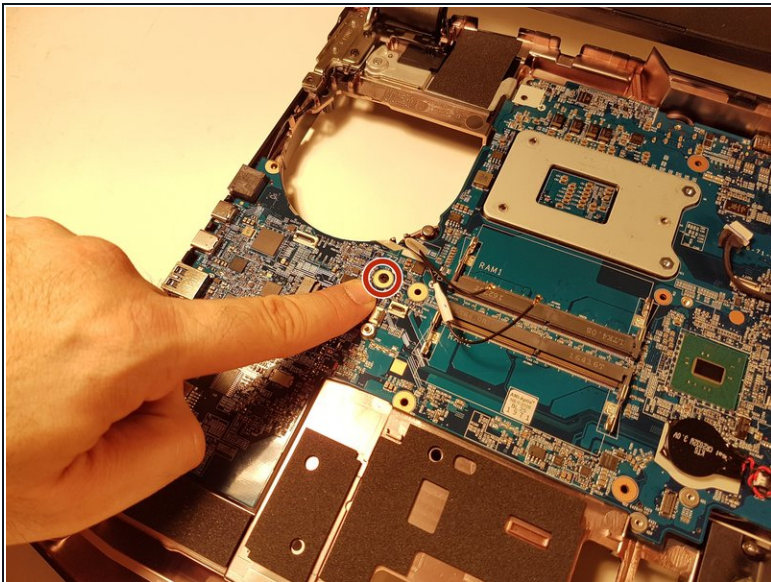


## Step 35



- Disconnect the red circled connector.

## Step 36



- Unscrew the screw circled in red.
- Remove the motherboard.

---

To reassemble your device, follow the instructions in reverse order.