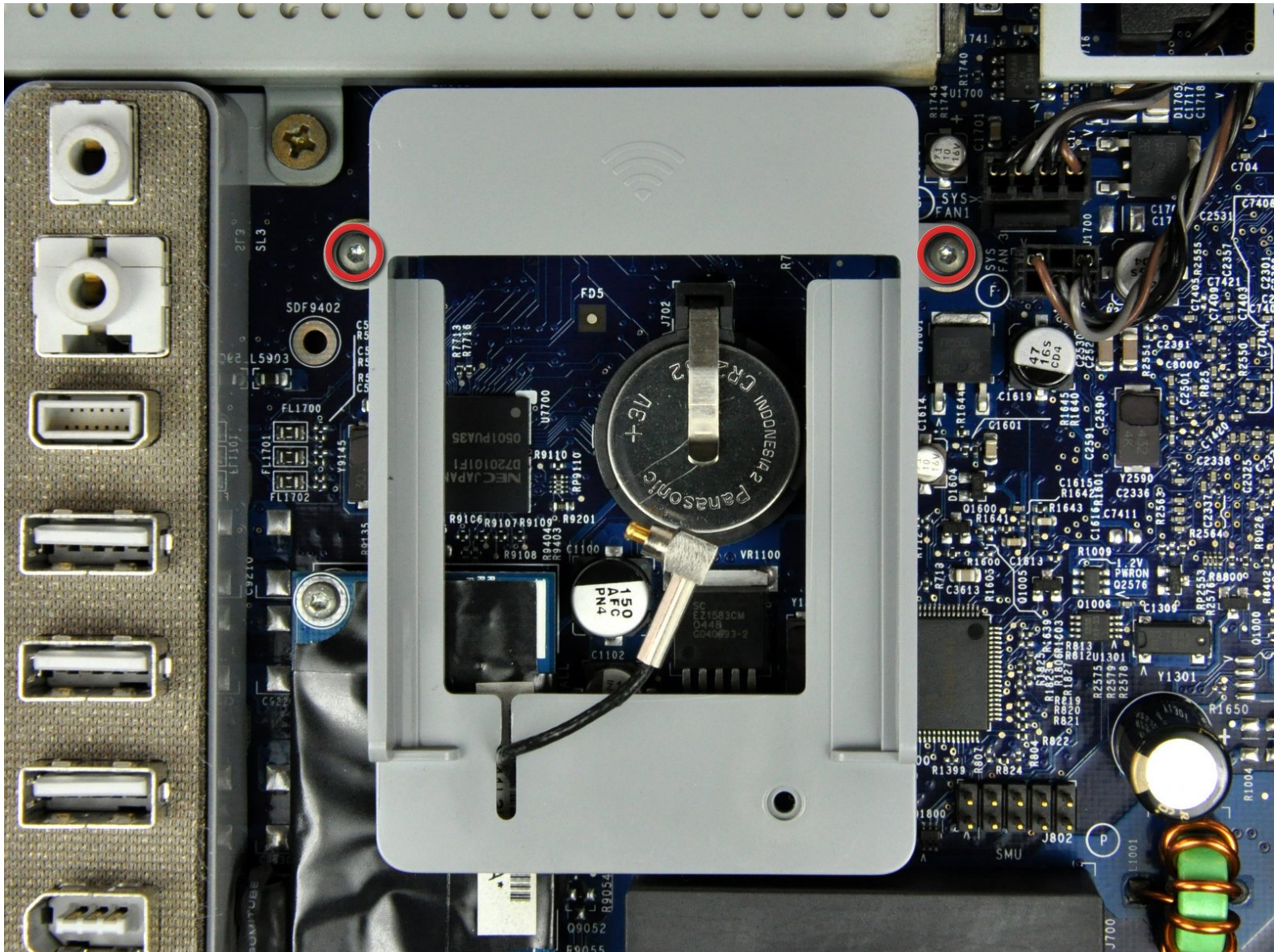




iMac G5 17" Model A1058 Modem Replacement

Written By: Walter Galan



INTRODUCTION

Replace your modem and re-introduce yourself to the joys of 56k.



TOOLS:

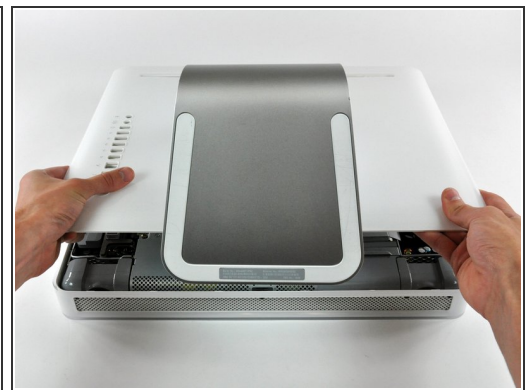
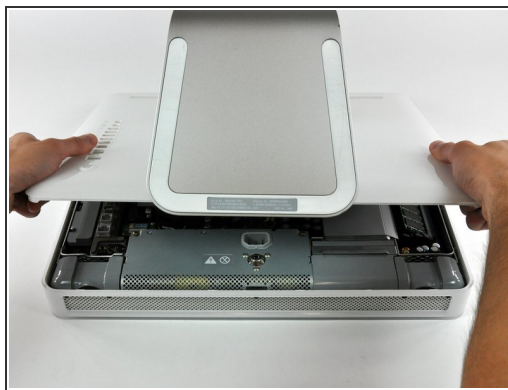
- [Phillips #1 Screwdriver](#) (1)
 - [Spudger](#) (1)
 - [T6 Torx Screwdriver](#) (1)
-

Step 1 — Rear Panel



- Lay the iMac display-side down on a flat surface.
 - Loosen the three Phillips screws securing the rear panel to the iMac.
- ⚠ These screws are captive in the iMac. The center screw will stop turning after about 3.5 turns and the outer screws will stop turning after about 5.5 turns. Do not try to remove these screws from your iMac.

Step 2



- Lift the rear panel slightly from the bottom edge of the iMac.
- Pull the rear panel toward yourself and remove it from the iMac.

Step 3 — AirPort Extreme



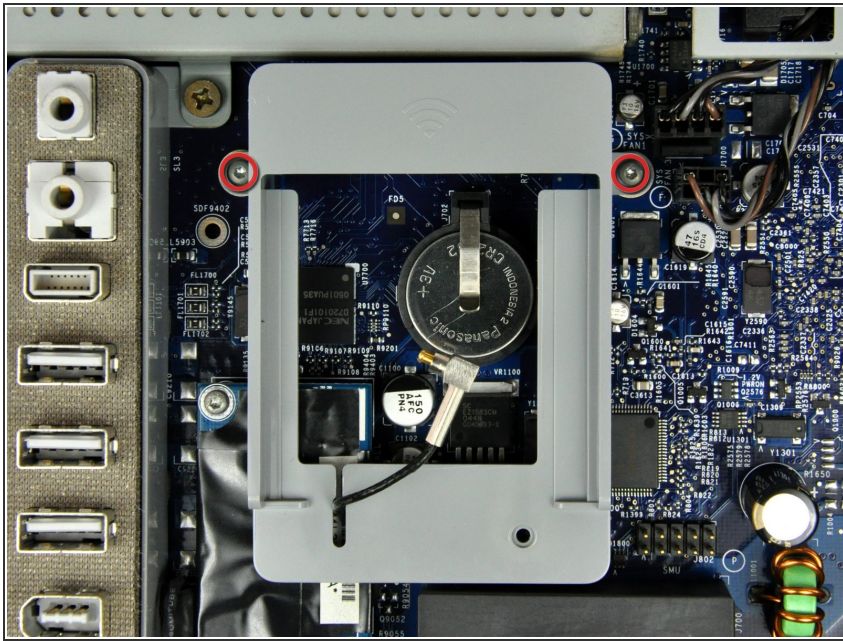
- Lift the AirPort card slightly by its plastic tab and pull it straight away from its socket.
- ★ During reinstallation, insert the AirPort card such that the antenna side is nearest the center of the logic board.

Step 4



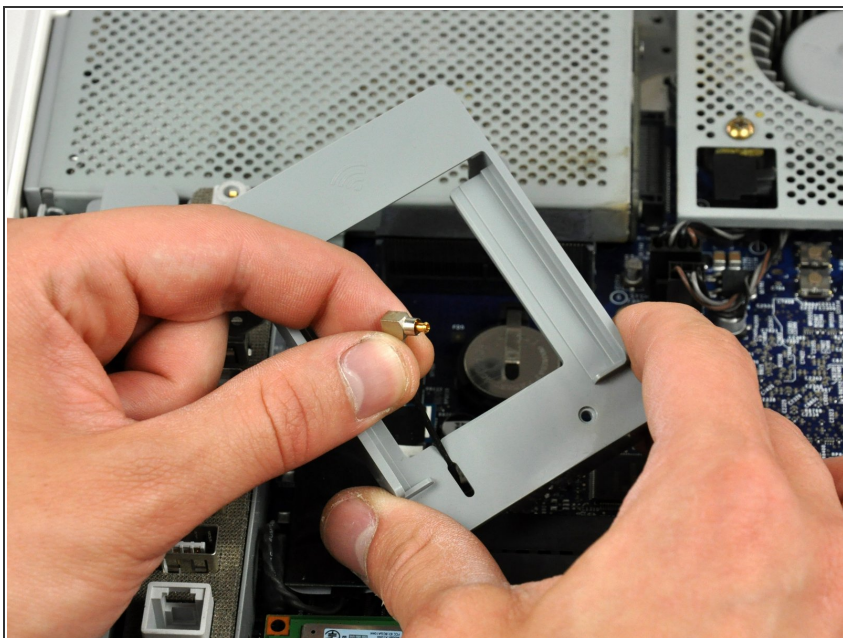
- Insert the flat end of a spudger between the body of the AirPort card and its antenna connector.
- Push the spudger away from the AirPort card to disconnect the AirPort antenna.
- ★ When reassembling your iMac, be sure to insert the AirPort card the way it was before disassembly.

Step 5 — Modem



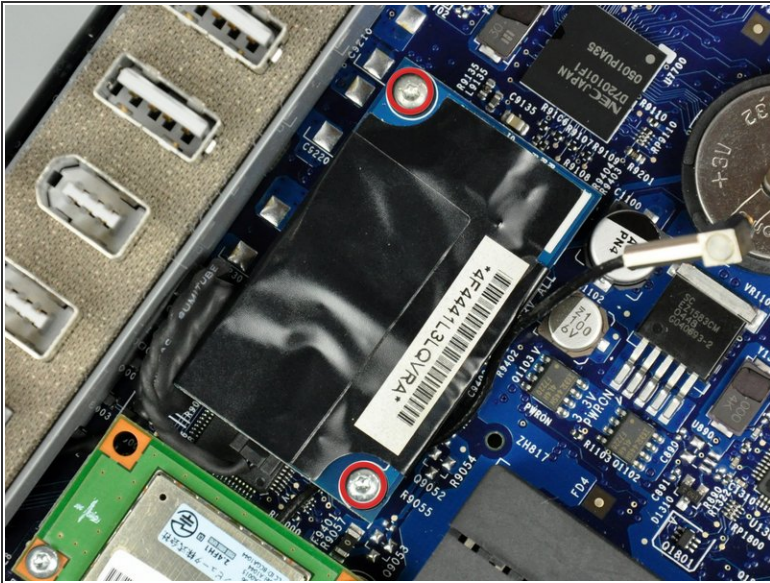
- Remove the two 5.5 mm T6 Torx screws securing the AirPort bracket to the logic board.
- Slightly lift the AirPort bracket off the logic board.

Step 6



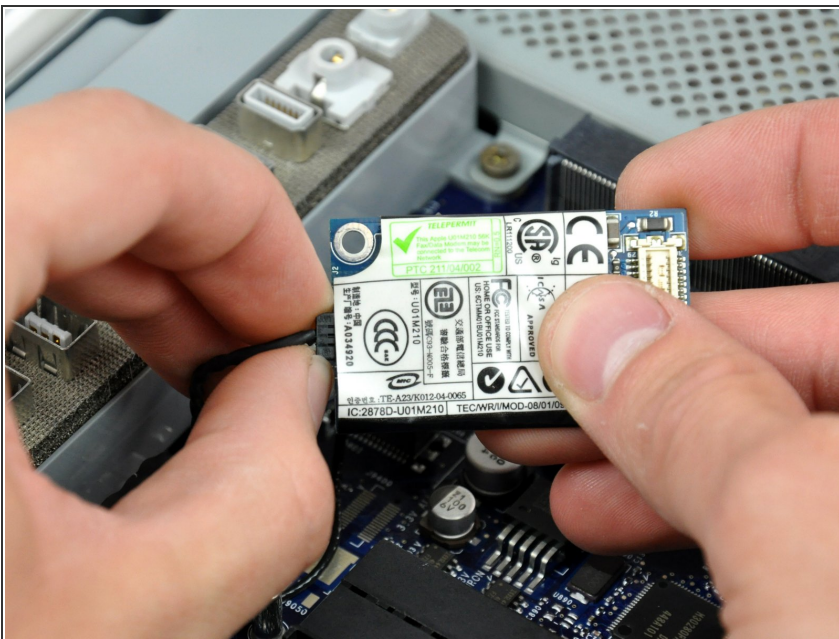
- De-route the AirPort antenna through the slot in the AirPort bracket.
- Set the AirPort bracket aside.

Step 7



- Remove the two 5.5 mm T6 Torx screws securing the modem to the logic board.
- Pry the modem straight up from its top edge to disconnect it from the logic board.

Step 8



- Pull the modem cable connector straight away from the modem.

To reassemble your device, follow these instructions in reverse order.