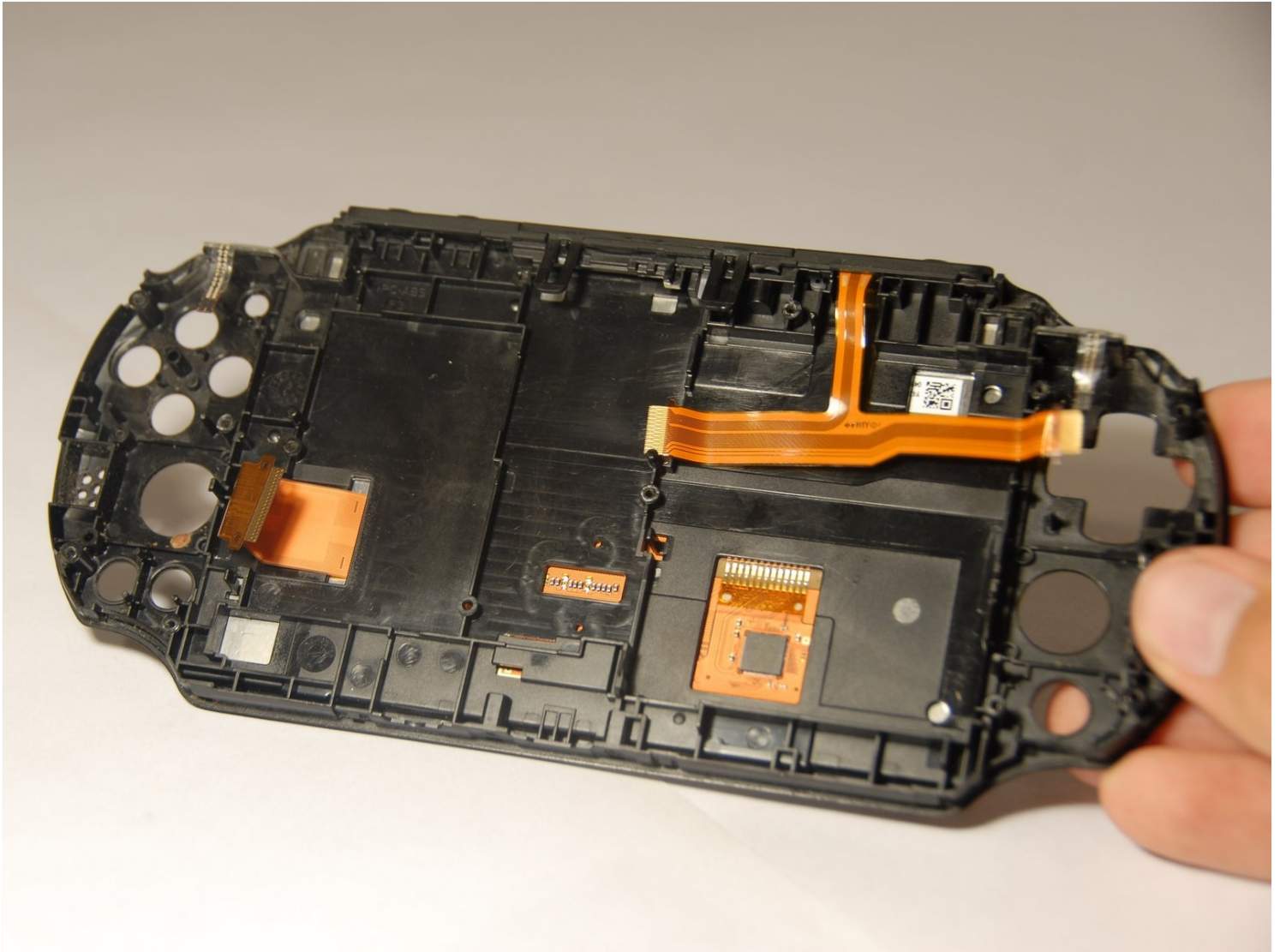




PS Vita Slim Display Replacement

Note::: taking apart your device may void the...

Written By: Daniel Woodard



INTRODUCTION

Note::: taking apart your device may void the warranty on the device, please proceed with caution and consider having it sent in first if possible to be worked on by the company. This guide may be longer then the rest but, as long as you take your time and you are careful you should be able to complete the replacement process.

TOOLS:


JIS #00 Screwdriver (1)
Tweezers (1)
iFixit Opening Tool (1)
Spudger (1)

PARTS:

PlayStation Vita Slim (PCH-2001)
Display Assembly (1)

Step 1 — Back Panel



 Please make sure the system is completely powered off and all SD storage cards are removed before starting the removal process

- All 6.35mm screws were removed using a J00 bit from the iFixit pro toolkit.
- There are four screws on the back of the device, remove them as shown.

Step 2



- There are two screws on the bottom, near the charging port, remove them using the J00 screwdriver on the 6.35mm screws from the iFixit pro toolkit.
- Finally, remove the top screw under the dust cover using the J00 screwdriver on the 6.35mm screws from the iFixit pro toolkit.

Step 3



① The next step will require the opening tool.

⚠ Please carefully separate the back from the front completely. You will need to disconnect the small ribbon cable on the inside before completely removing the back. Otherwise you may end up hurting the ribbons on the inside.

① While separating the back, carefully pry all the way around the back. You will hear popping noises while going around and this is a good sign.

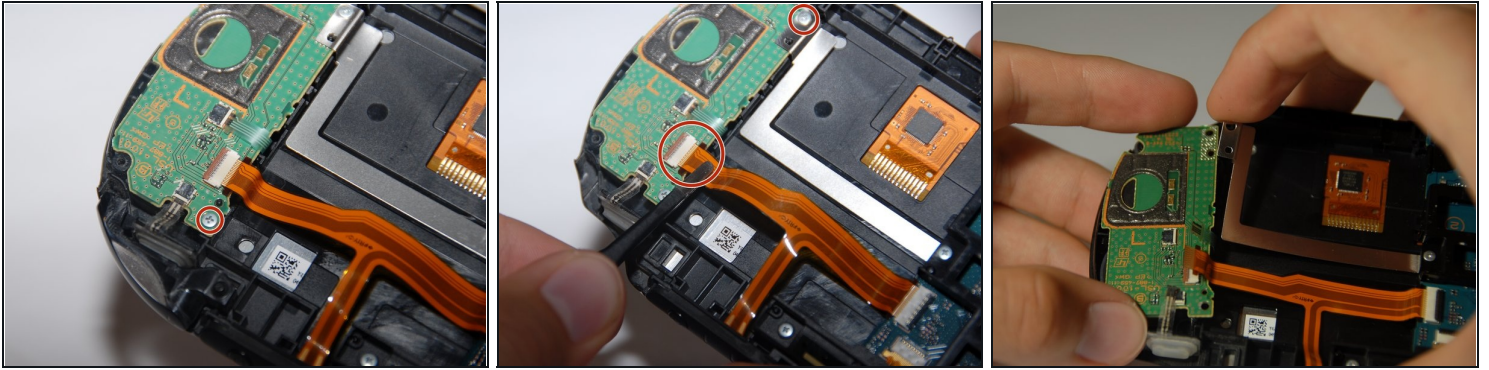
- Upon removing the back panel you will need to slowly and carefully remove the ribbons connecting the hardware to access the needed parts to be repaired.

Step 4



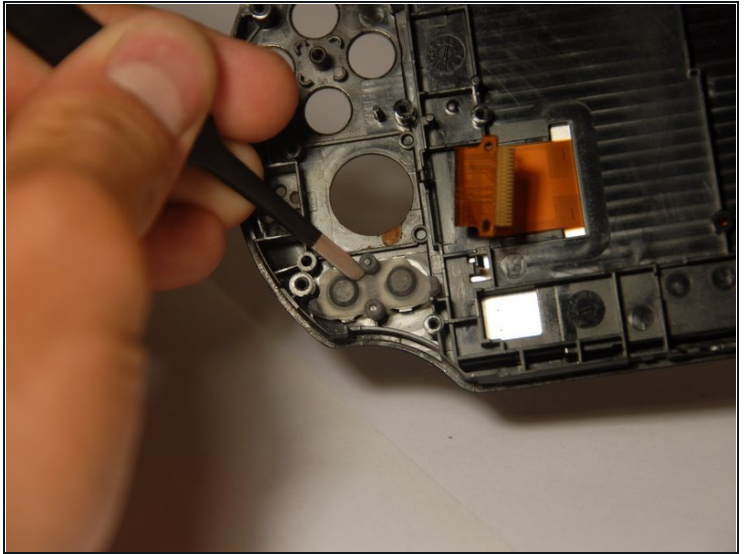
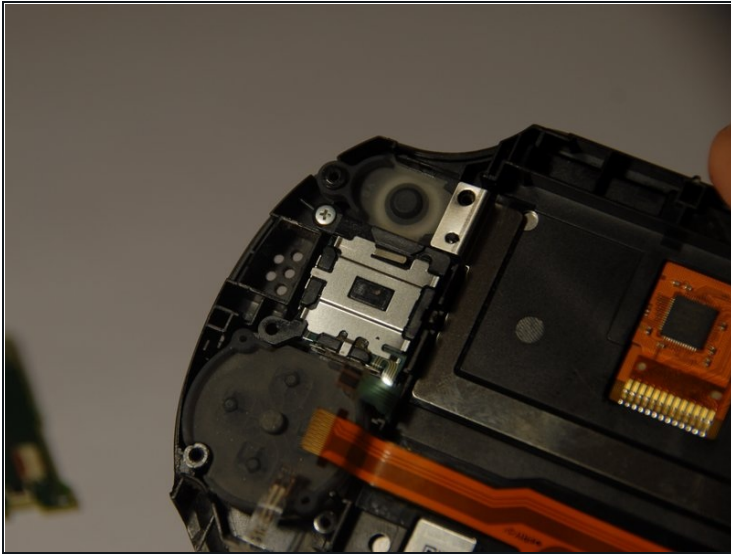
- Once the ribbons have been removed, then the back is fully removed and you can access the hardware within.

Step 5 — Buttons



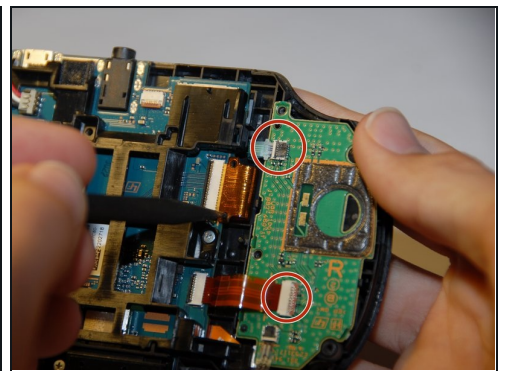
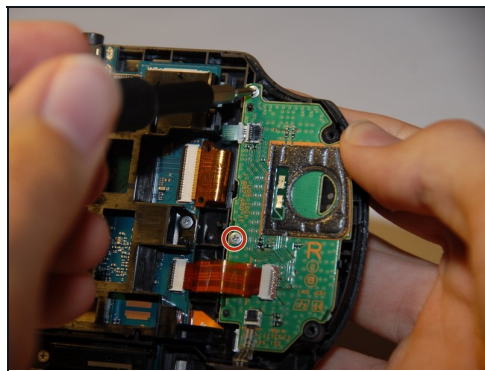
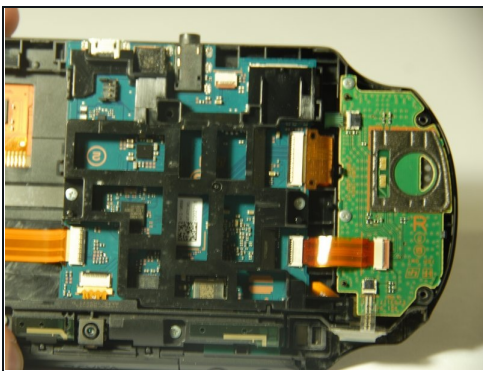
- ① We are starting on the left side of the device. This is where the D-pad is, or in other words the left, right, up. and down directional pad.
- The next step is to take the ribbon off of the green casing on the left.
 - Then simply unscrew the two screws holding down the green casing using a J00 bit from the iFixit pro toolkit, they should both be 6.35 mm .
 - Now simply raise the last restraint, a metal bar that is holding the casing down. Once it has been removed you can take off the green casing.

Step 6



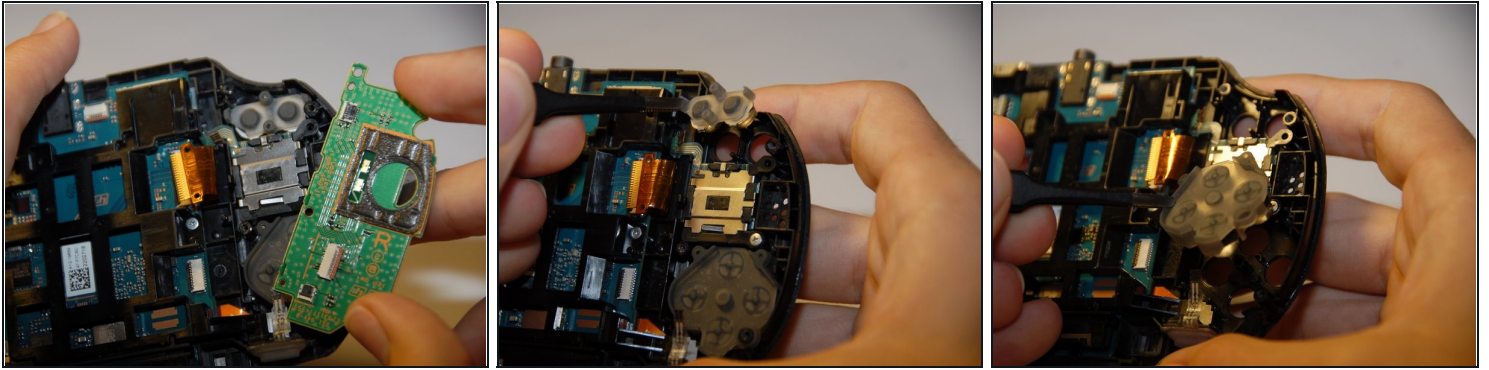
- After the green casing has been taken off you should be able to see the back of the D-pad.
- ① Once it is removed you should be free to interchange the buttons as needed.

Step 7



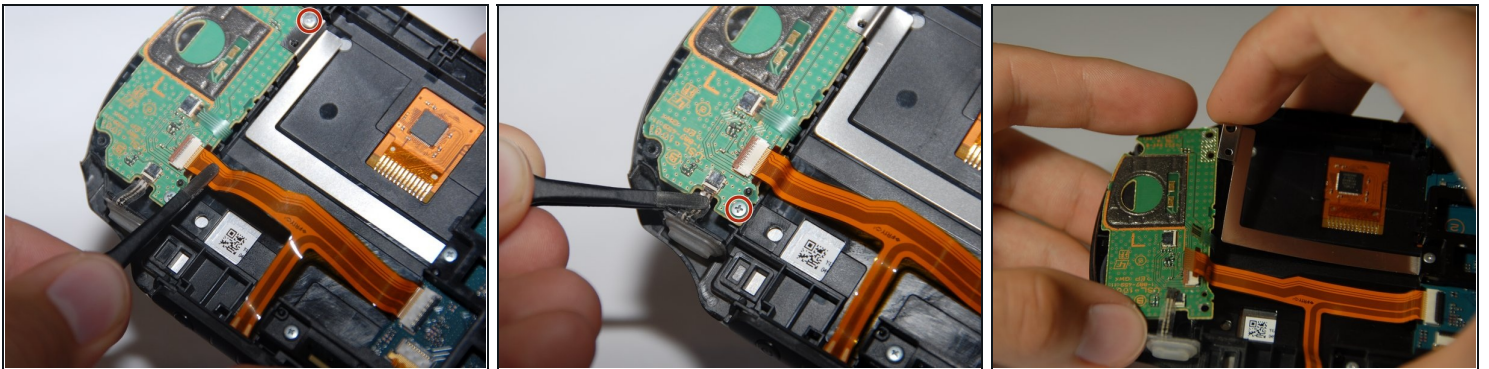
- ① Now it is time for the right side buttons. Which is the replacement of the D-Pad on the right side or in other words, where the box, triangle, circle, and X buttons are.
- First step is the removal of the ribbons on the green casing.
- Once the ribbons have been removed, next you will want to remove the two 6.35 mm screws using the J00 screwdriver.
- Now you should be able to remove the green casing.

Step 8



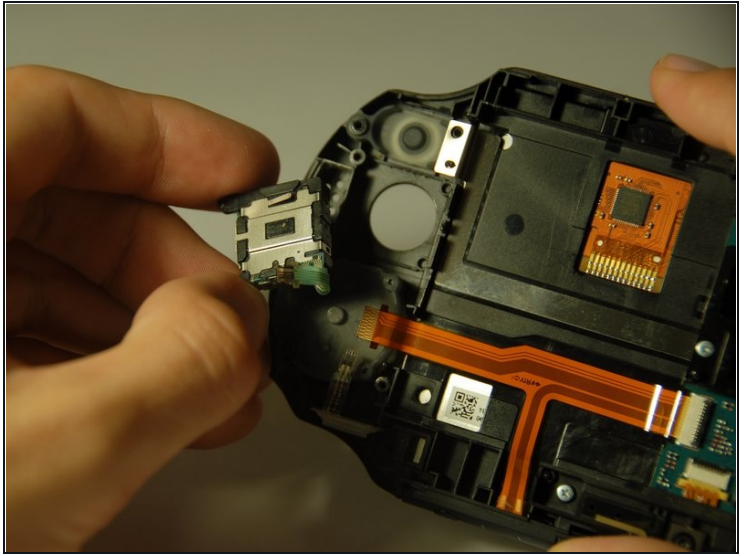
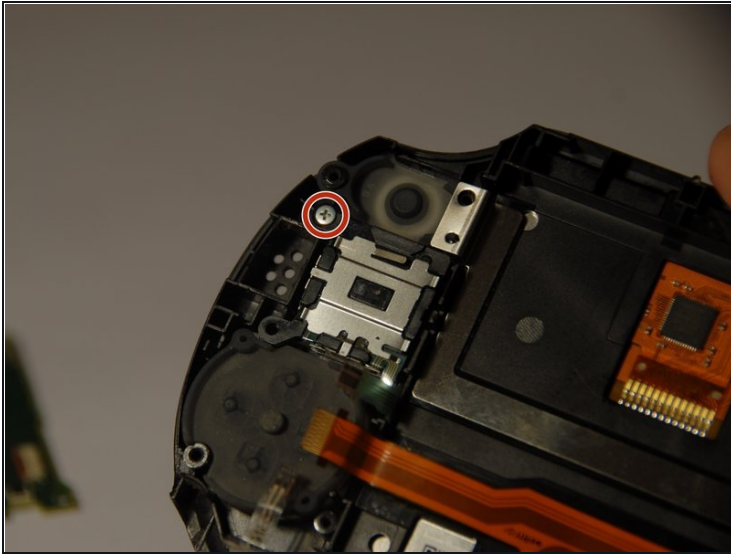
- Once the green casing has been removed you are now be able to see the button pads that need to be removed.
- The D-pad and other such buttons can now be replaced or simply cleaned.

Step 9 — Joystick



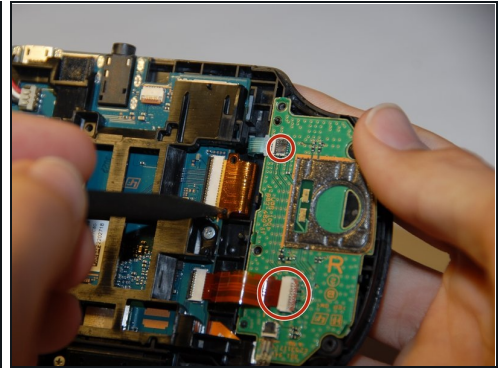
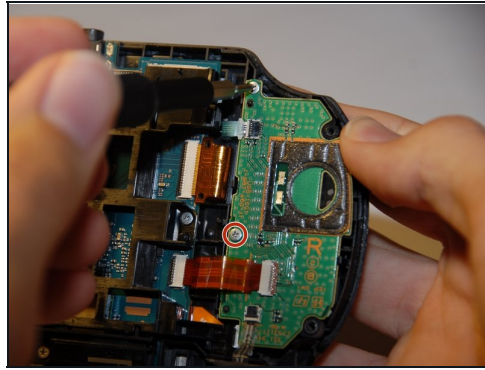
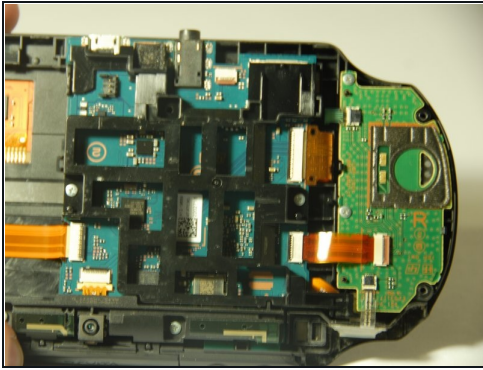
- ① Starting with the left joystick.
- ① There is a green casing holding in the joystick it will need to be removed to allow access .
- There are 3 ribbons holding the section together. Remove them carefully.
- Next unscrew the two screws holding down the casing. They will both still be 6.35 mm screws and will be able to be taken out by a J00 bit from the iFixit pro toolkit.
- Now carefully left the metal piece holding down the green casing, it will be the last resistance. Lift out the green casing now.

Step 10



- Once the casing has been removed there will be one more screw to be removed. It will be a 6.35 mm screws that requires a J00 screwdriver from the iFixit pro toolkit.
- Now simply and carefully take out the joystick out.
- With the joystick taken out you can now do what is needed on the left joystick, or even replace it.

Step 11



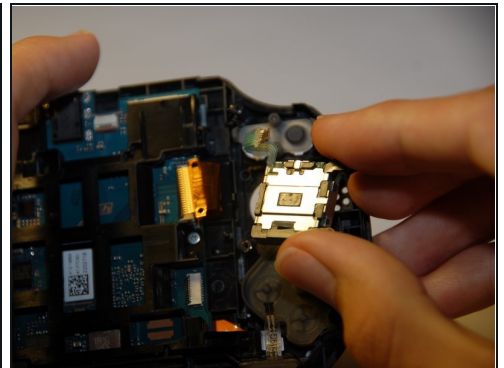
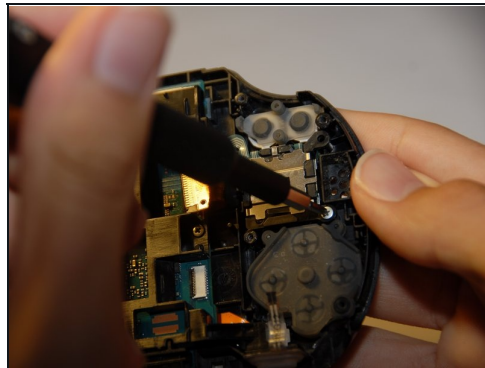
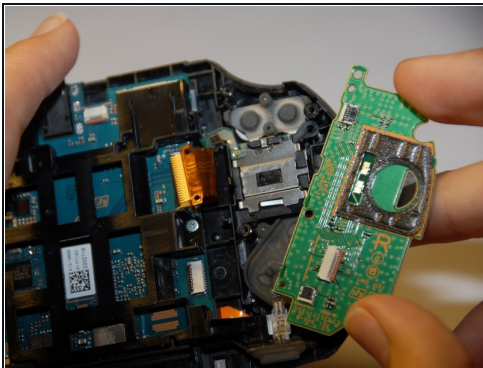
① Switching over to the right joystick.

① There will be a green casing containing the joystick. First it must be removed.

⚠ Carefully remove the ribbons from the entire section.

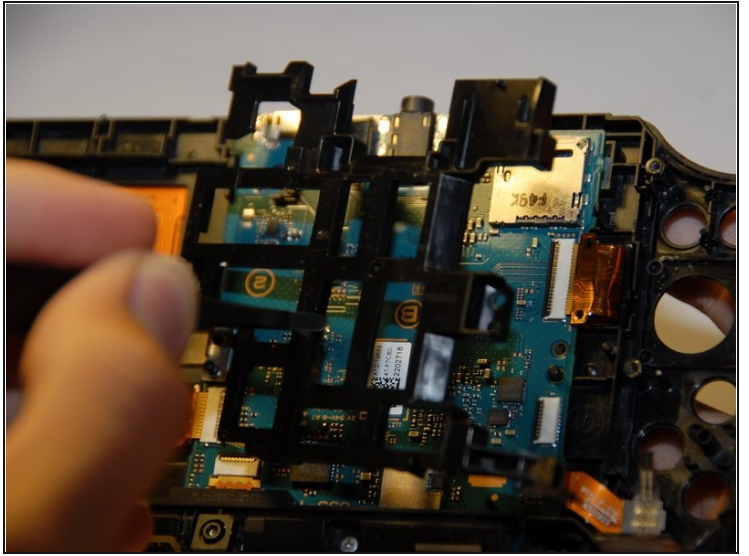
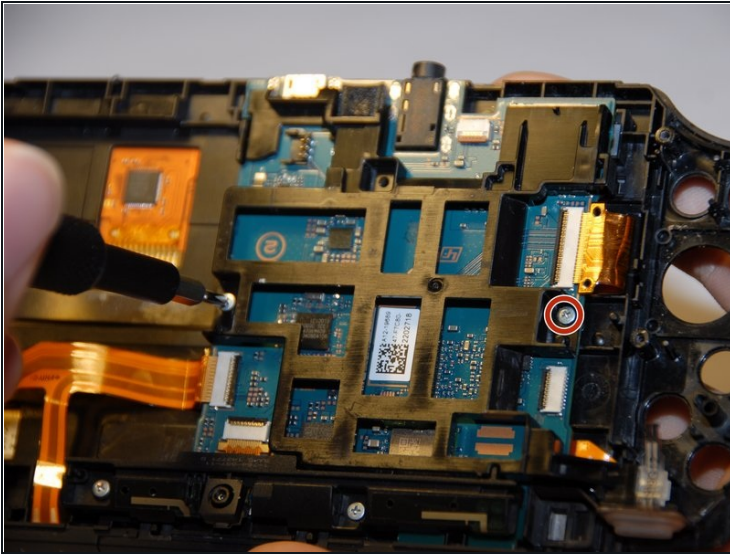
- Proceed to remove the two screws holding the casing down. They will be 6.35 mm screws and can be removed using a J00 bit.

Step 12



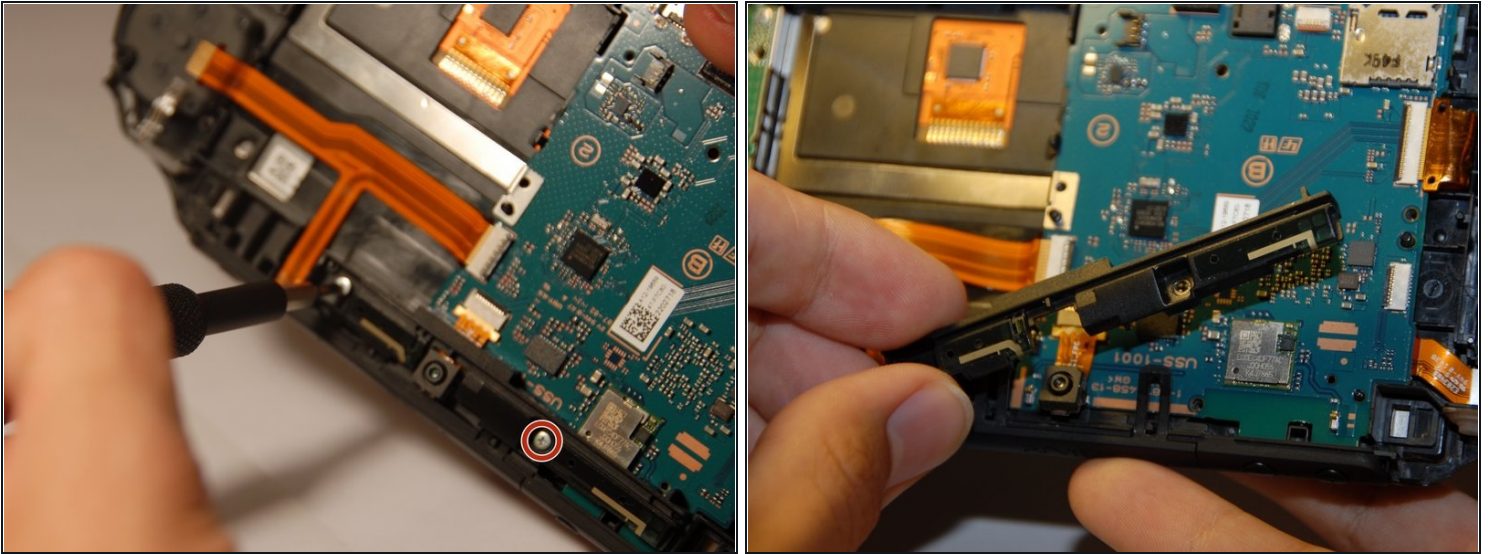
- Once the casing is off, there will only be one more screw to take off. It will also be a 6.35 mm screw that uses the J00 bit from the iFixit pro toolkit.
- Now simply remove the joystick from the device .
- Once the joystick is removed you can do what is needed to the right joystick part, or even replace it if needed.

Step 13 — Motherboard



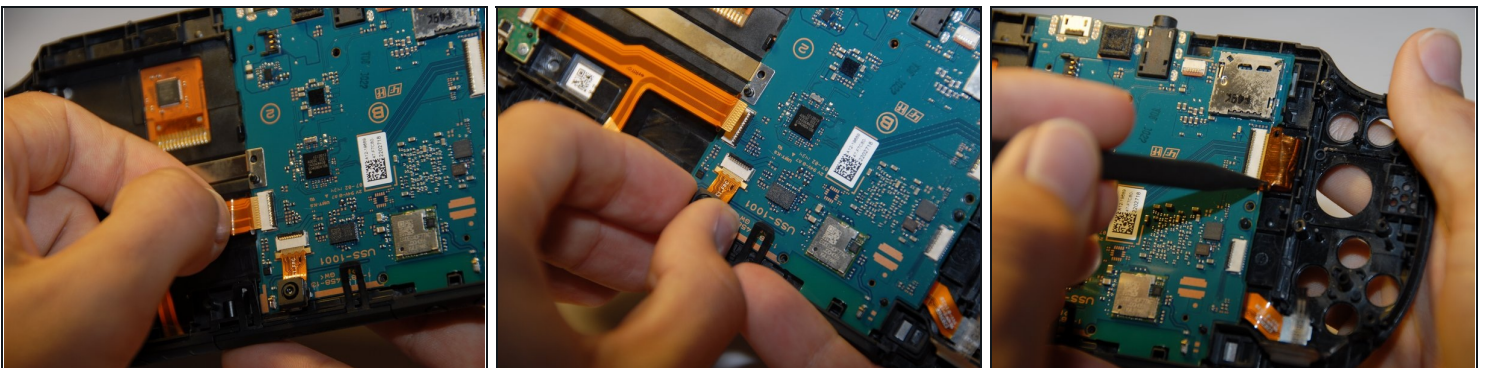
- ① First you will want to remove the black casing holding the motherboard in.
- Remove the two screws that are holding the casing down. These will be 6.35 mm screws that are to be removed using the J00 bit from the iFixit pro toolkit.
 - Once the screws are removed, **carefully** lift the case out of the system.

Step 14



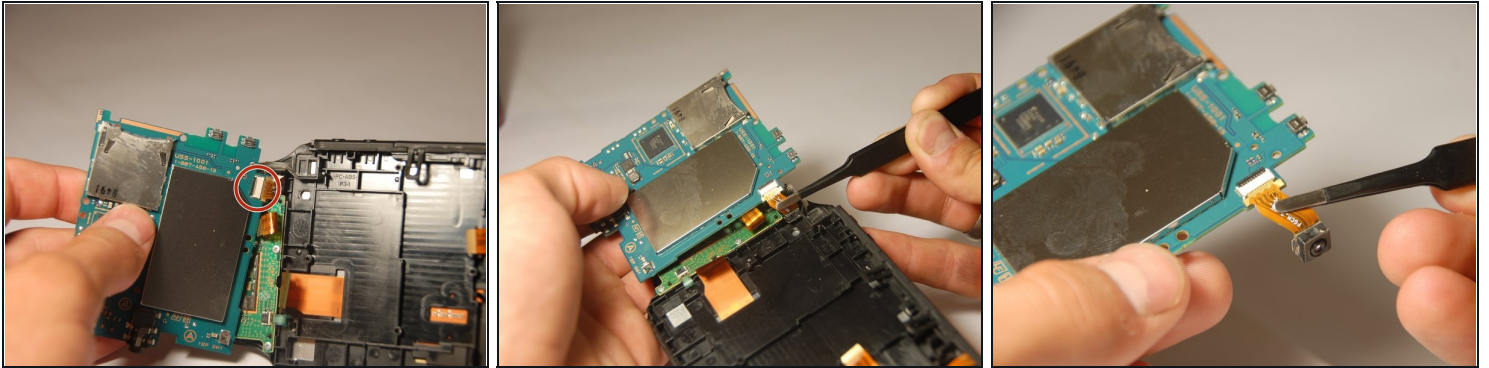
- Next remove the two bottom 6.35 mm screws using the J00 bit from the iFixit pro toolkit.
- Now you will be able to gently remove the bottom casing.

Step 15



- ⚠ Next you must remove the two ribbon cables connecting the motherboard to other hardware parts. Please be **careful**. The third ribbon on the bottom is a camera that also needs to be carefully removed.

Step 16



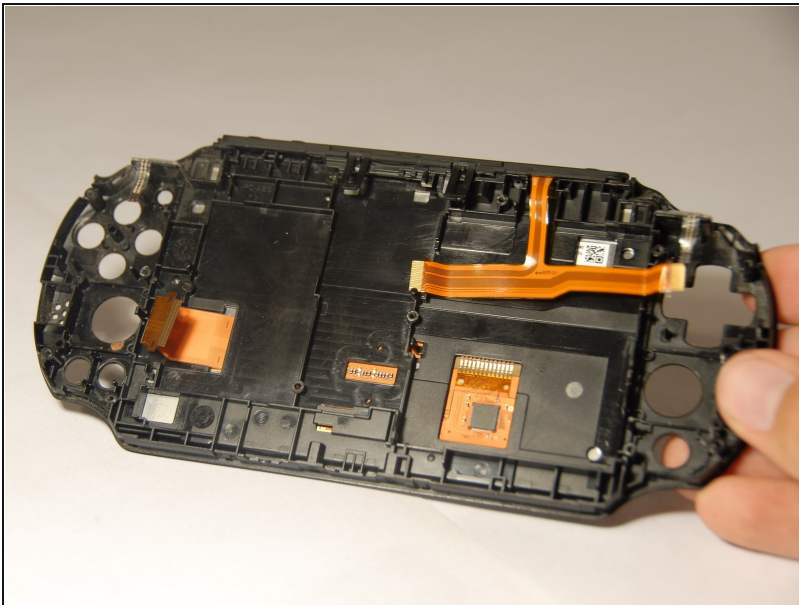
⚠ Now gently lift the motherboard up, as there will be a ribbon that still needs to be removed.

⚠ **Carefully** remove the last ribbon, from the *hardware and not the motherboard*.

① The motherboard can be successfully removed.

- Any repairs or replaces will be doable now.

Step 17 — Display



① The best way to replace the display is to replace the entire front.

① So after following all prerequisite guides you will come to the blank slate that is left. Where nothing of the device will remain except for the front that contains the display itself.

① From here you will need to acquire a new display, and using that display put the device back together.

To reassemble your device, follow these instructions in reverse order.