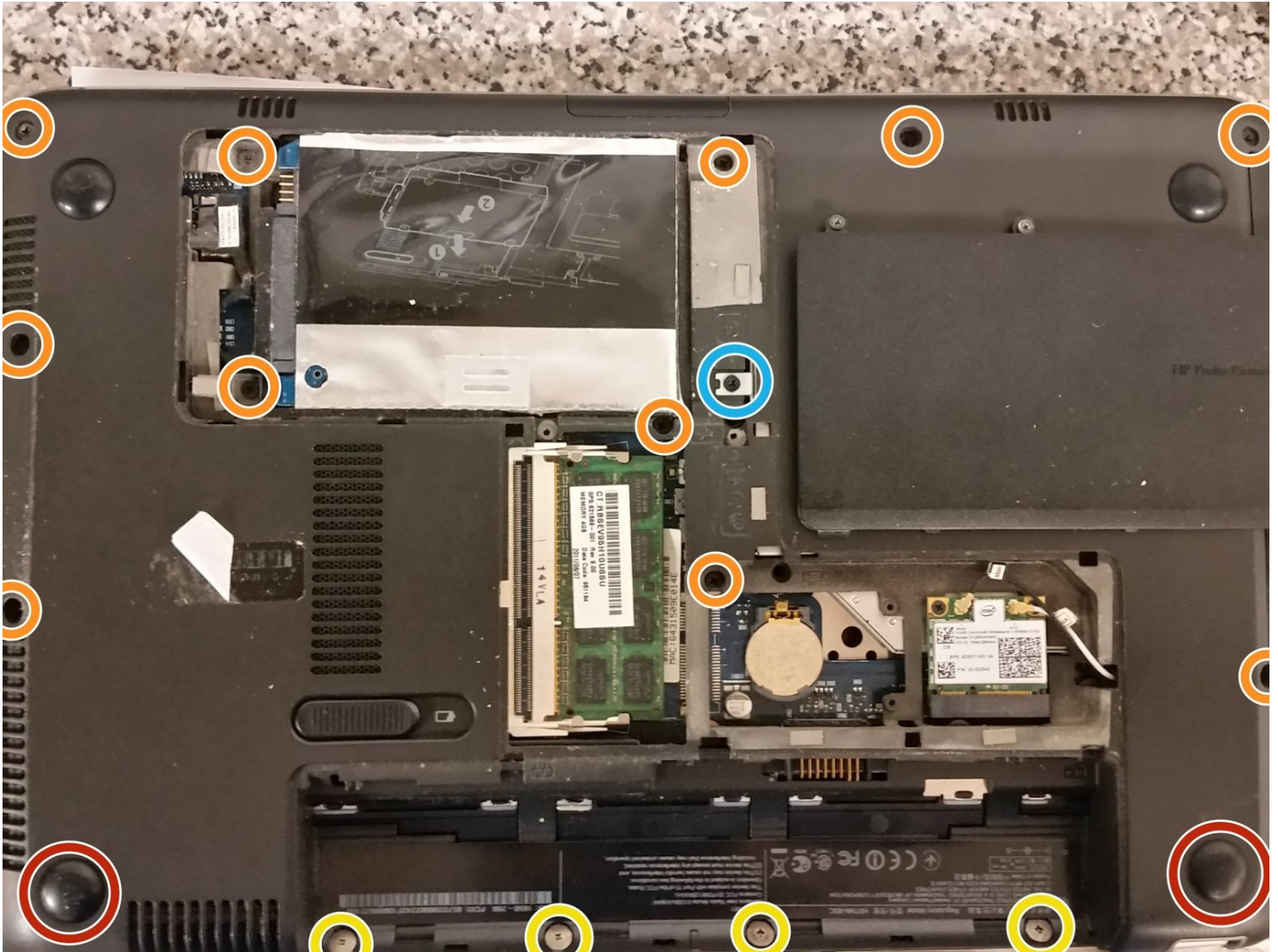




# HP Pavilion DM4 Screen Assembly Replacement

Written By: Joseph Sctbunio



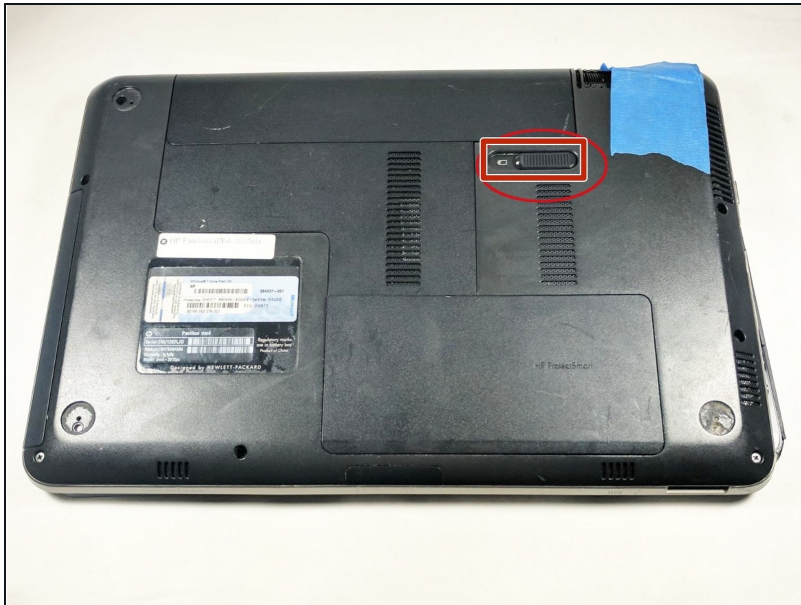
## TOOLS:

64 Bit Driver Kit (1)

iFixit Opening Tool (1)

Spudger (1)

### Step 1 — Battery



- Locate the lock switch on the bottom of the computer.

### Step 2



- Slide the lock until you feel it unlatch the battery.

### Step 3



- Remove the battery

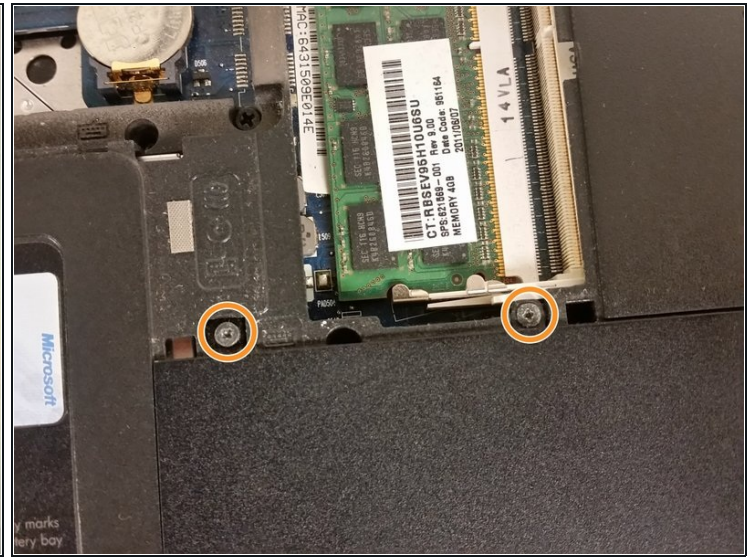
### Step 4 — Keyboard



- Turn off the device, disconnect it from all power, and remove the battery.
- Remove the two highlighted screws to release the memory cover.

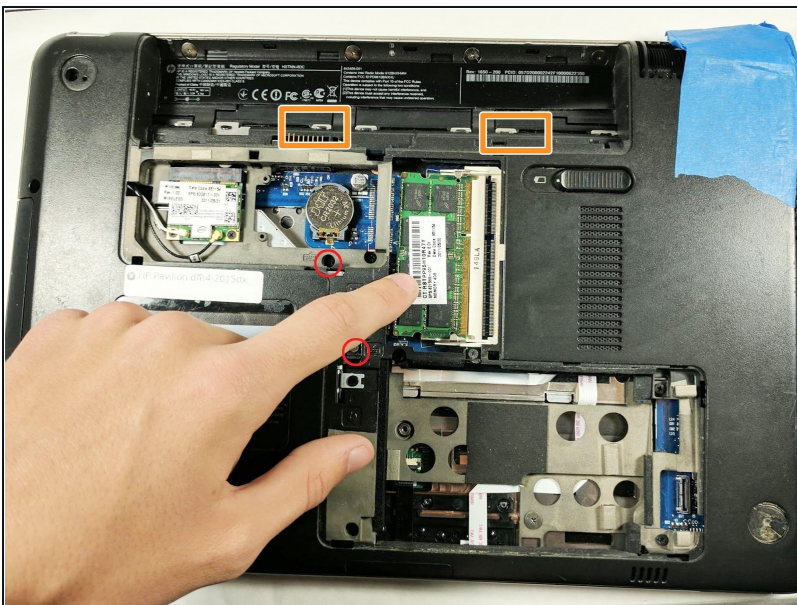


## Step 5



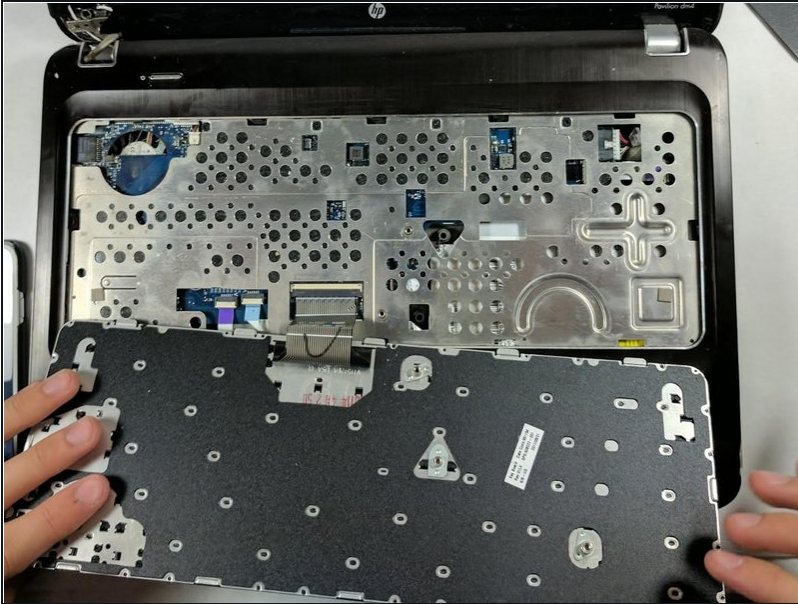
- Remove the two highlighted screws to release the hardware cover.
- Remove the two screws highlighted in the 2nd image to release the hard drive cover.

## Step 6



- Remove the screws (as shown in pic), these two screws secure the HP keyboard.
- Use a flathead screwdriver to release the highlighted keyboard tabs with ease.

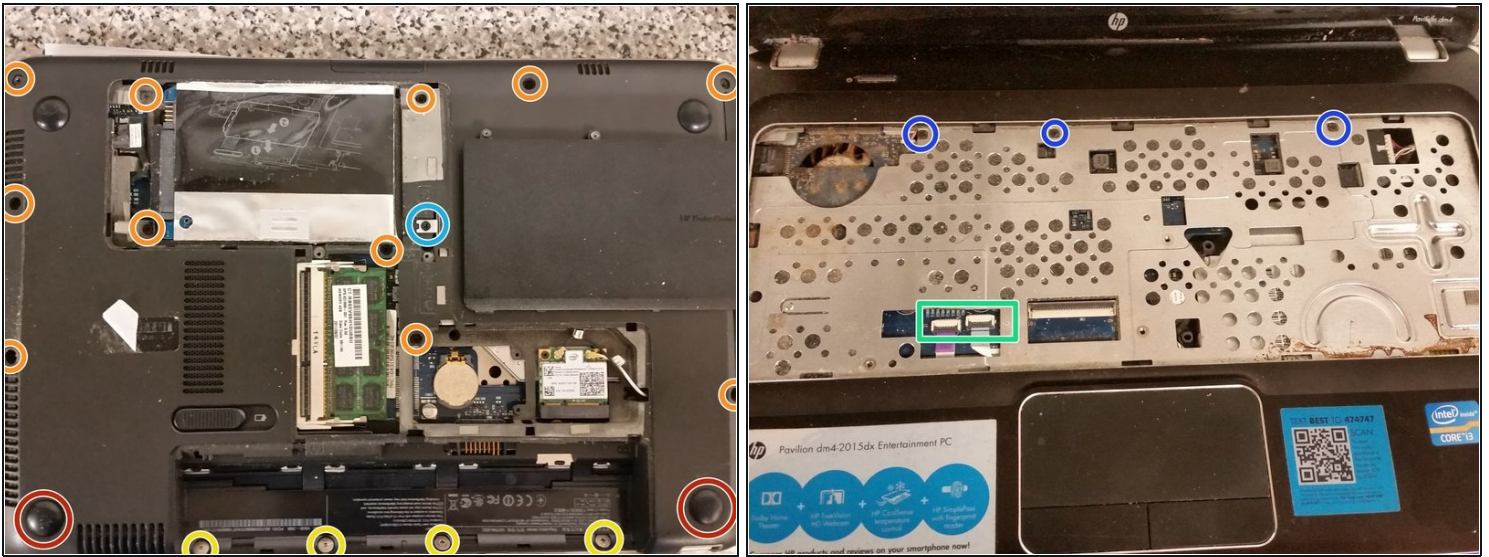
## Step 7



- Turn the device right-side up and pull the keyboard frame upward along the top row of keys. There are Four (4) protruding male clips that engage along this top edge. Use a flathead screwdriver or similar tool to pry the keyboard from the frame.
- Locate and remove the lockdown cable and unlock the keyboard cables. When prying the keyboard up, you will find resistance as a small 2 inch x 1/4 inch strip of double face tape is used to further hold the keyboard in place. (Depending upon the age of the laptop, it may require additional pulling strength to break the tapes bond.)
- Slide out the keyboard cable and install a new HP Pavilion DM4 keyboard.

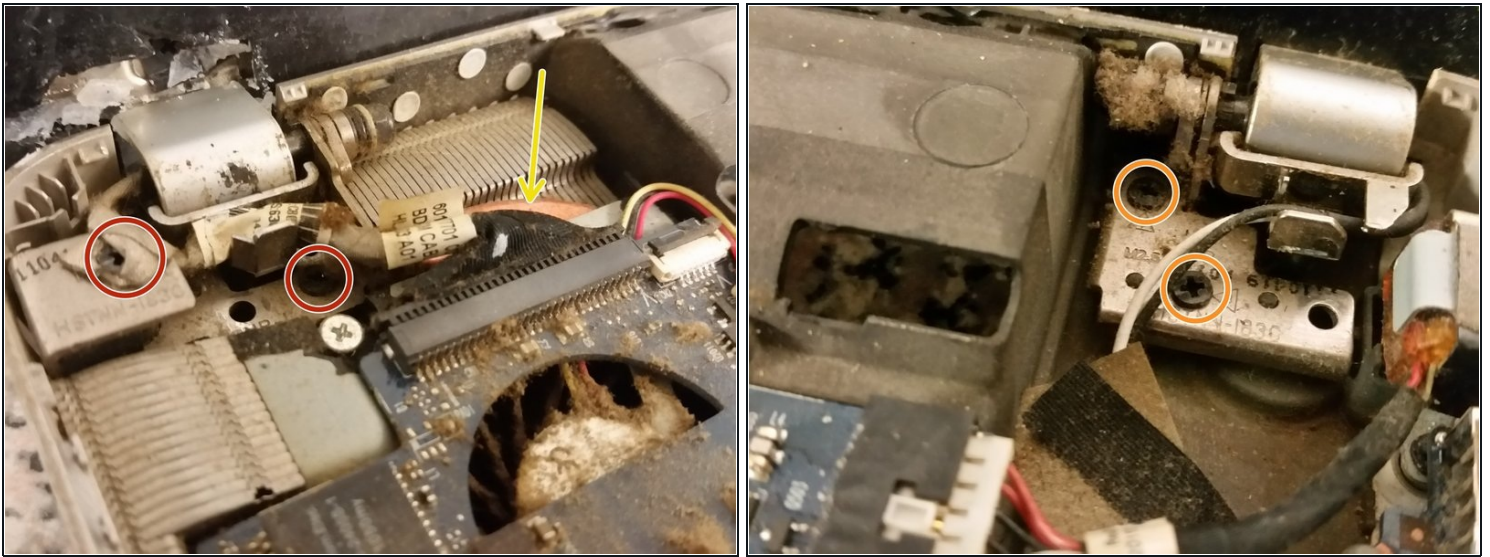


## Step 8 — Remove palmrest



- Now that we're done removing the battery, the covers, and the keyboard, we must remove the palmrest.
- Flip the laptop bottom-up. Pry the two rear rubber feet off with a small flathead screwdriver, and remove the two same-size Philips screws under them.
- Remove the 11 same-sized Philips screws.
- Remove the single shorter Philips screw securing the disc drive, and slide the disc drive out.
- Remove 4 more Philips screws, these being differently sized.
- Remove the hard drive by pulling on the caddy tab, pull on the connector on the motherboard, and set the drive aside. Remove any screws you see from behind where the hard drive was.  
**Also unplug the wireless antenna connectors.**
- Flip the laptop normally, open the screen, and remove the power touchpad and fingerprint reader cables from the motherboard.
- Remove the three remaining screws holding the palmrest. Use a guitar pick to separate the palmrest from the base, and then slowly lift the palmrest to reveal the power button cable. Remove it, and then put the palmrest aside. Whew!

## Step 9



- Remove the two smaller Philips screws securing the left hinge to the base.
- Repeat the same for the right hinge.
- Unplug the LCD cable connector.
- Lift the assembly away from the base. You're done!

---

To reassemble your device, follow these instructions in reverse order.