



Asus MeMO Pad 7 ME176C LCD Screen Assembly Replacement

Replacement of Asus MeMO Pad 7 ME176C screen.

Written By: Nejad Harara



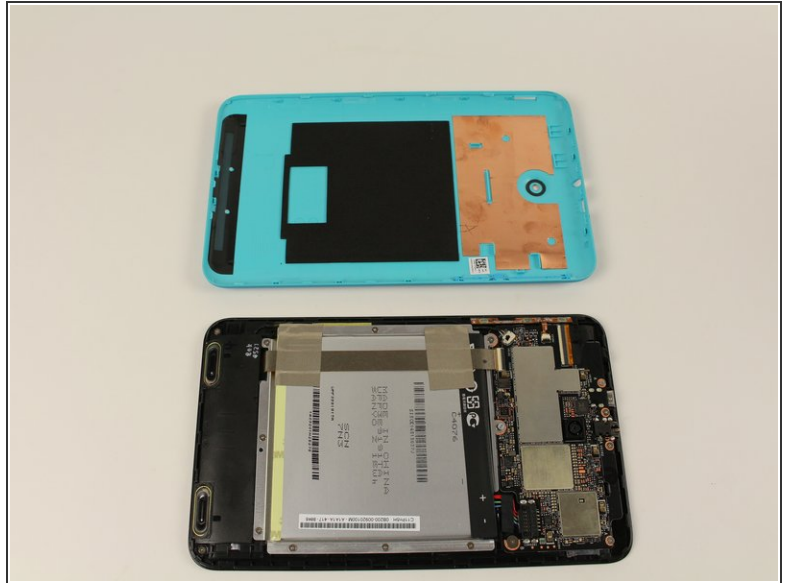
INTRODUCTION

This guide will take you through the necessary steps to disassemble your Asus MeMO Pad 7 ME176C to replace the screen.

TOOLS:

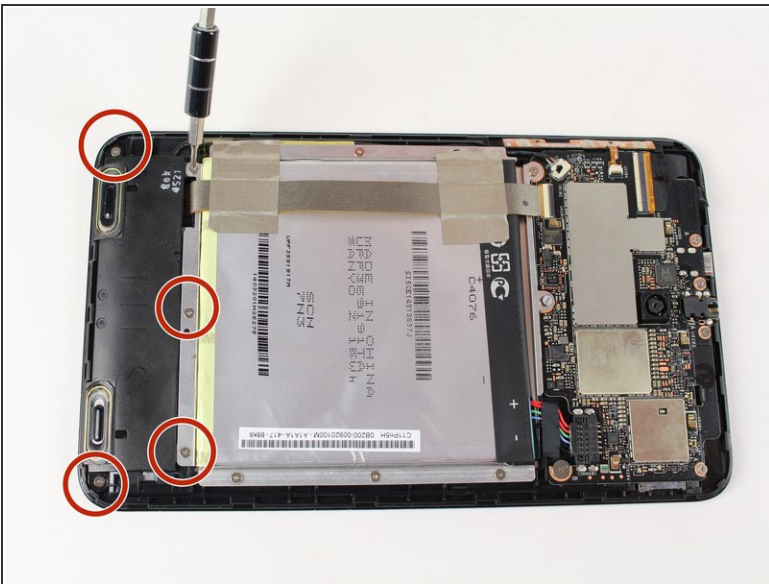
- [iFixit Opening Tools](#) (1)
 - [Metal Spudger](#) (1)
 - [Phillips PH000 Screwdriver](#) (1)
 - [Tweezers](#) (1)
-

Step 1 — LCD Screen Assembly



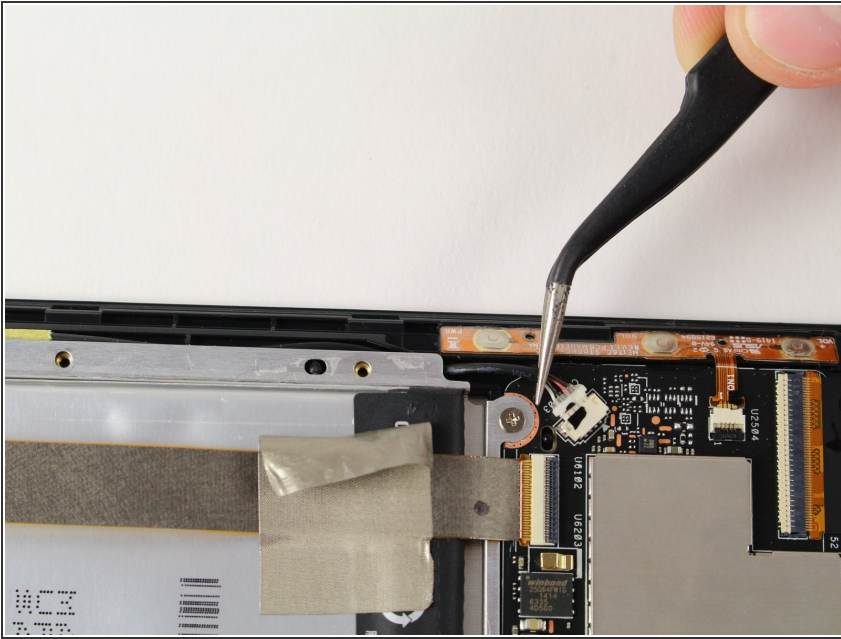
- Insert plastic opening tool in between screen and back cover to create initial separation between the two.
- Then run plastic opening tool along end of screen to fully separate back cover from screen.

Step 2



- Remove screws (2.6mm) connecting speaker to hard frame with Phillips head screw driver (PH000).

Step 3



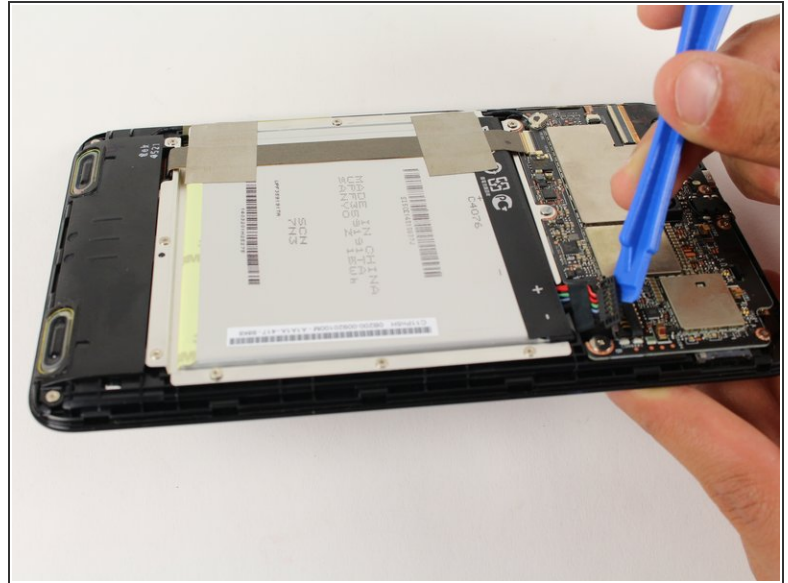
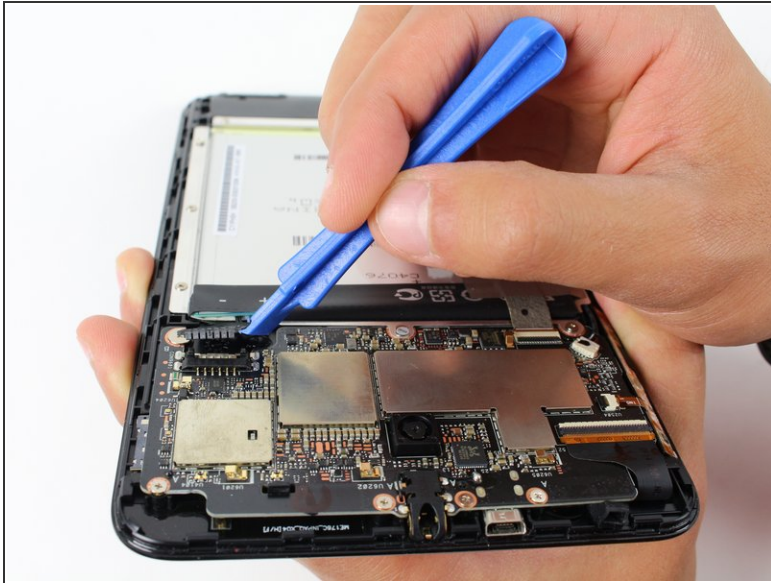
- Disconnect speaker wire from motherboard using metal pronged tweezers.

Step 4



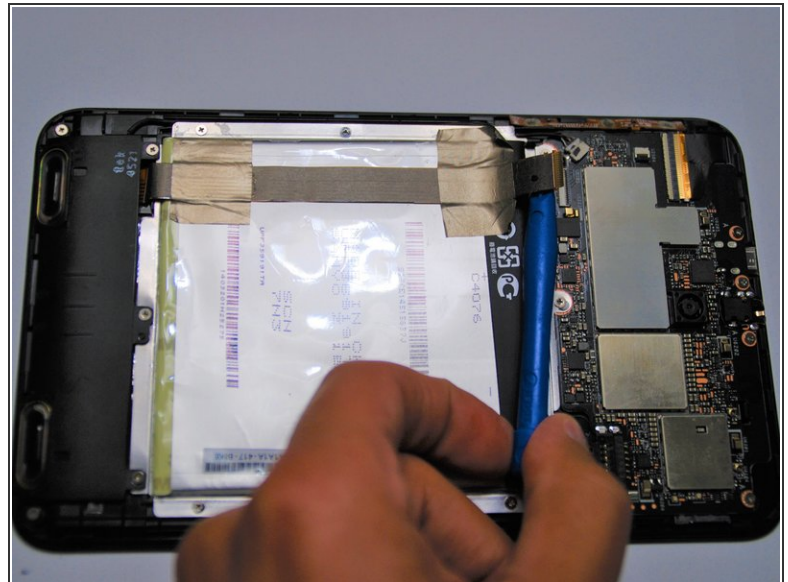
- Remove the screws (2.6mm) connecting the motherboard and battery tray to the hard frame with Phillip's head screw driver (PH000).

Step 5



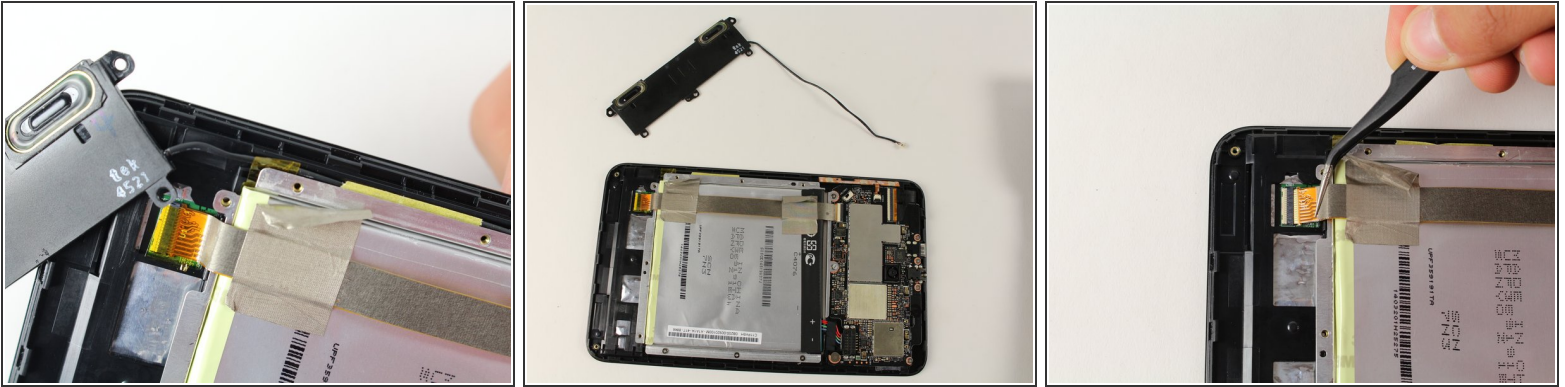
- Remove the black bundle battery connector from the motherboard using plastic opening tools.

Step 6



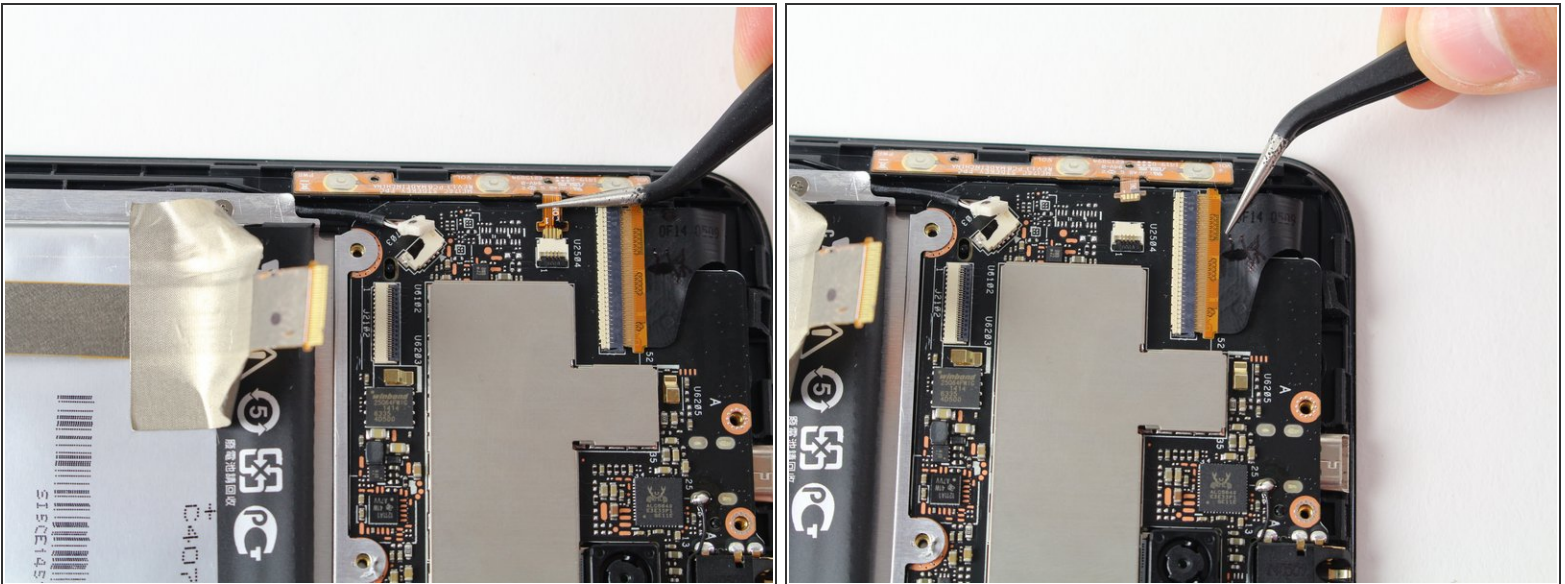
- Use plastic opener tool to disconnect ZIF connectors as shown.

Step 7



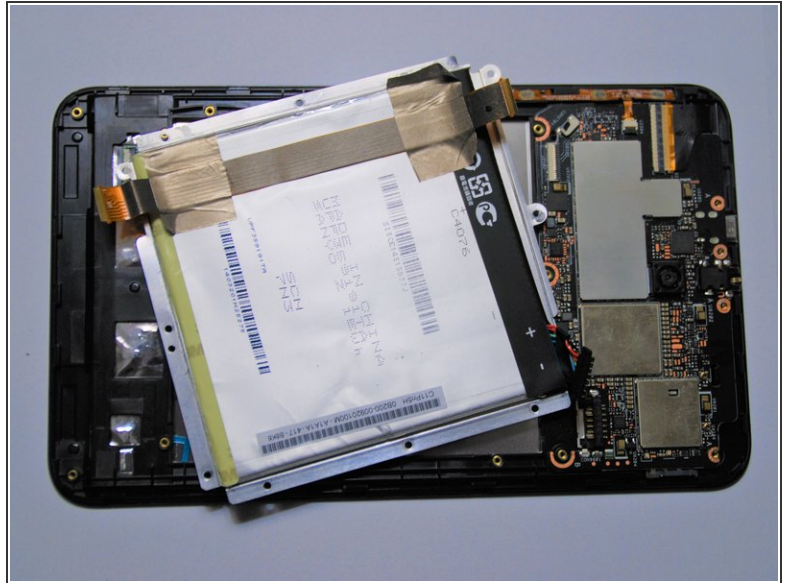
- Remove speaker housing to expose ZIF connection underneath.
- Then using metal tweezers disconnect the ZIF connector.

Step 8



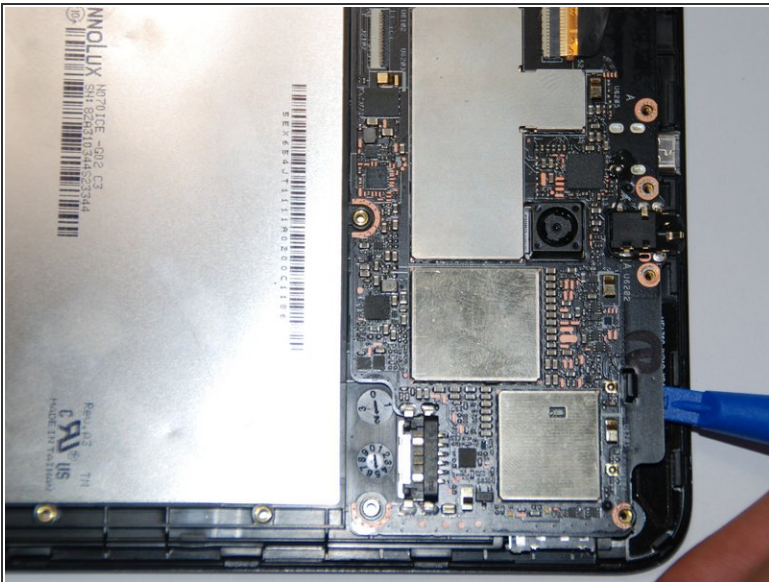
- Remove display and button connections from motherboard using metal tweezers.

Step 9



- Remove unscrewed battery tray from main frame.

Step 10



- Remove motherboard from hard frame.
- When removing the motherboard make sure all screws that attach motherboard to hardframe are removed and to release plastic tab as shown in image.

Step 11



- Peel off button sensors off the side of the hard frame.

Step 12



- Apply slight pressure on camera to break adhesive to finish screen disassembly processes.

To reassemble your device, follow these instructions in reverse order.