



# Bissell SpotBot Pet Repair Brush Motor Replacement

This replacement guide will cover how to replace the brush motor on the Bissell SpotBot Pet carpet cleaner.

Written By: Anthony Bonvino



---

## INTRODUCTION

This guide displays a step-by-step process of how a broken or faulty brush motor on the Bissell SpotBot Pet Repair Brush can be replaced and returned it back to its normal function.

---



### TOOLS:

- [Pro Tech Toolkit](#) (1)
-

## Step 1 — Brush Motor



- First, set your Bissell SpotBot Pet on a flat surface to begin your repair.

## Step 2



- Lift the right container vertically to remove it from the vacuum.

### Step 3



- Gently lift up the tab on the top of the vacuum and then proceed to lift the left container straight up to release it.

### Step 4



- Remove the tube from the vacuum by sliding the tube out of its holder on the side.



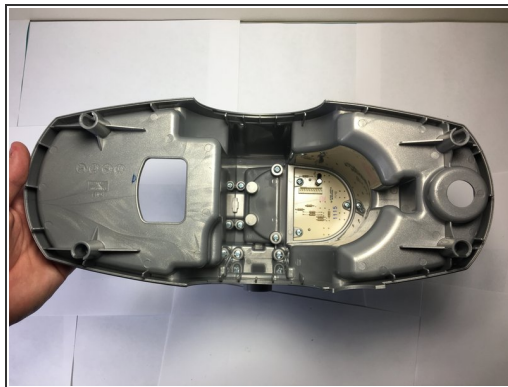
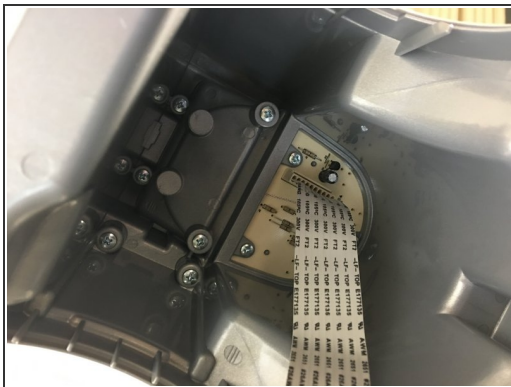
## Step 5



- Unscrew the 4 screws on the top of the device and gently lift the top half up.

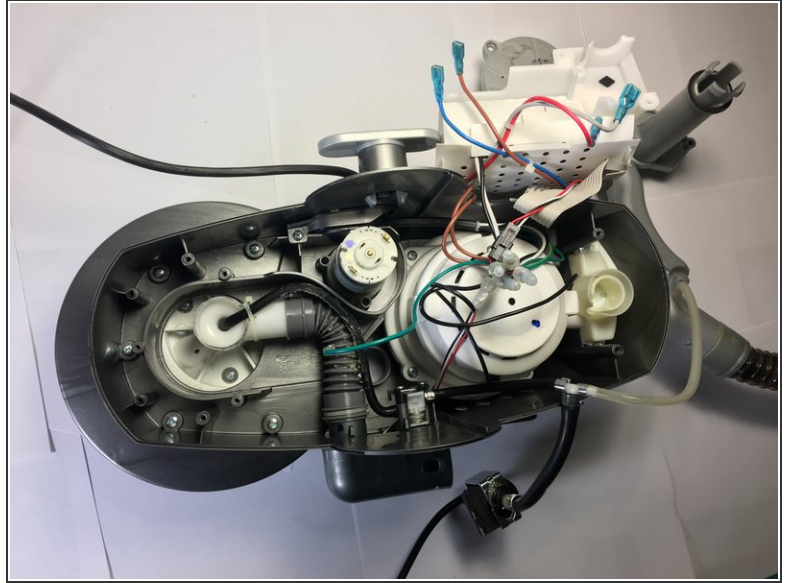
⚠ A ribbon cable is still attached to the underside of the top half.

## Step 6



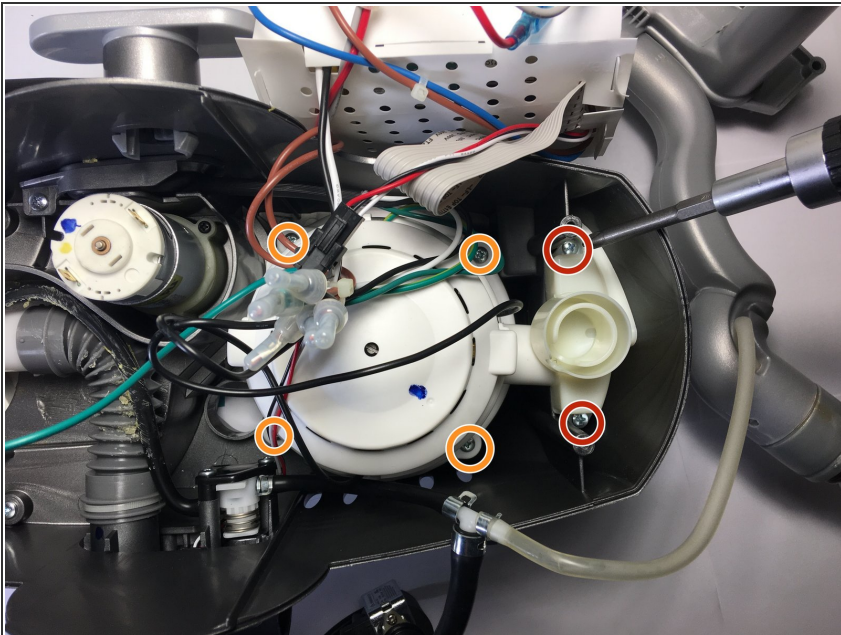
- Unplug the ribbon cable that connects the bottom half to the control panel on the top half. Then, set the top half off to the side.

## Step 7



- Unscrew the screw next to the white plastic wiring harness box. This will then allow you to set the white box off to the side.

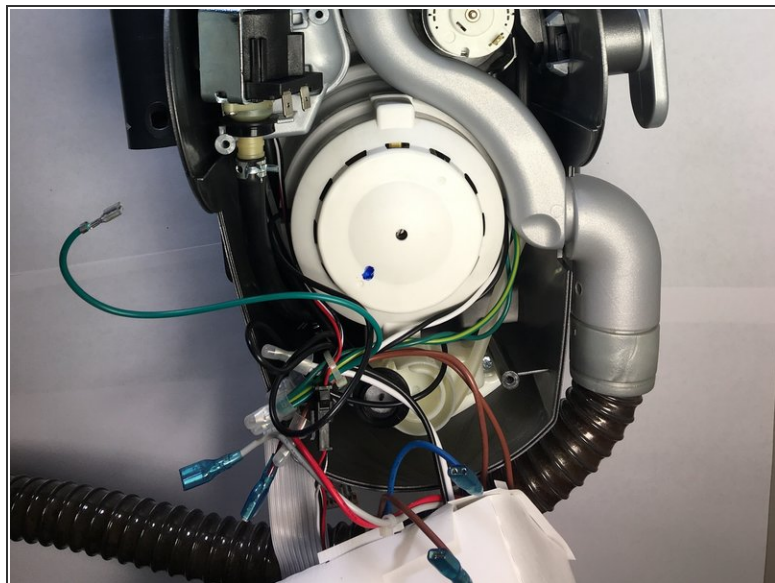
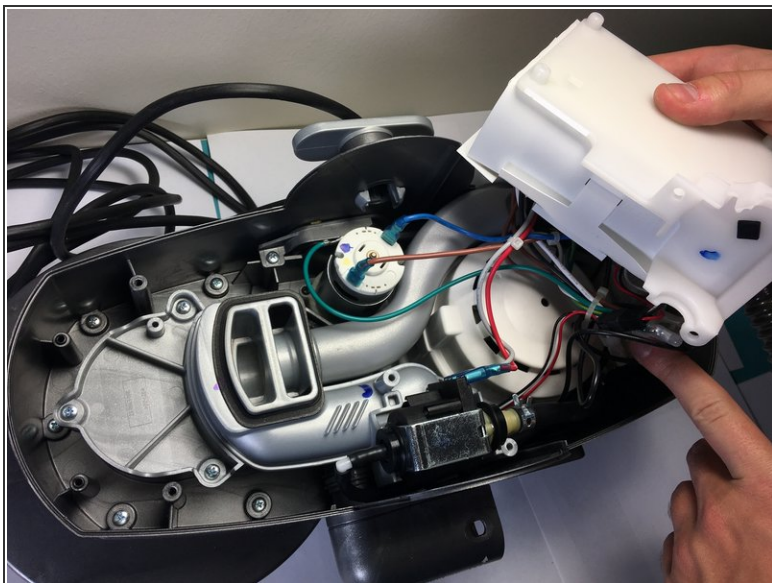
## Step 8



- Unscrew the screws on the plastic holder on the right side of the device. Once this is done, remove the plastic holder from the vacuum.
- Unscrew the screws that mount the vacuum motor to the device as shown.

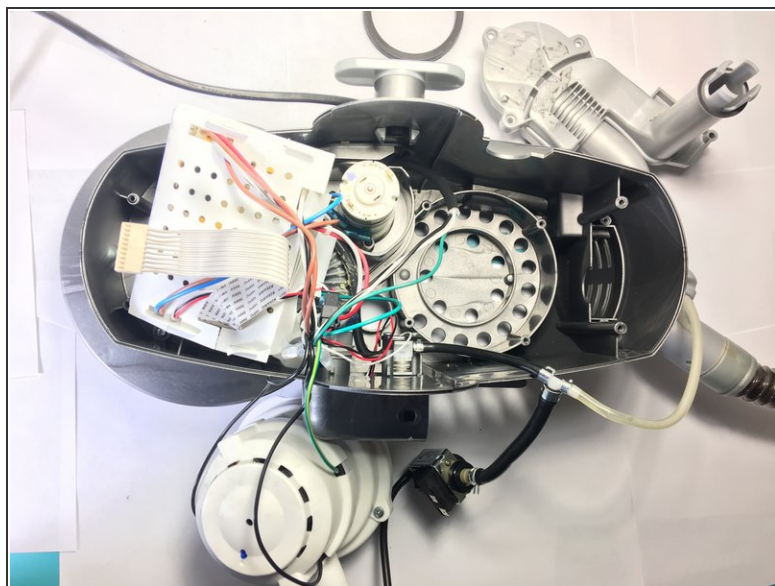
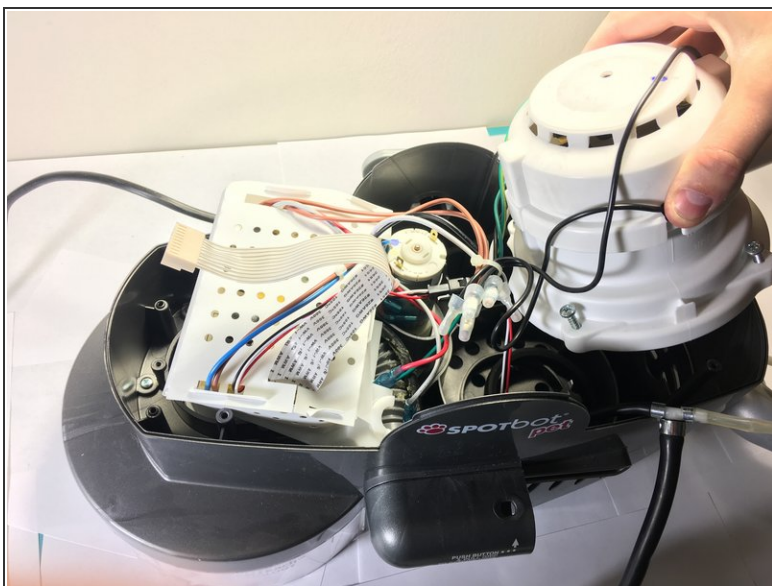


## Step 9



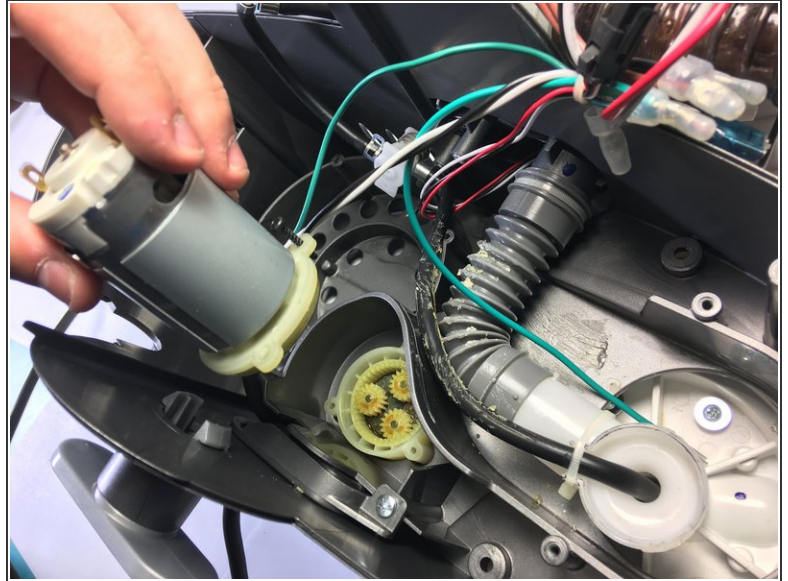
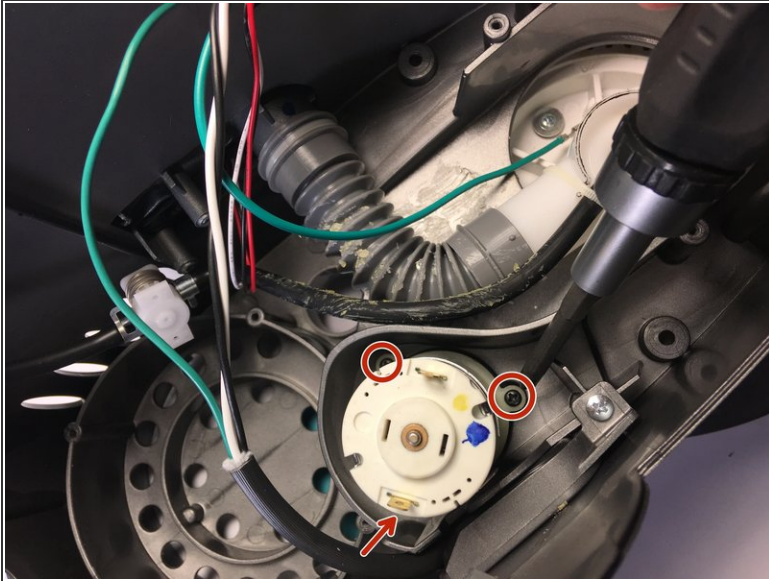
- Unplug the wires by disconnecting the section that connects the motor to the wiring harness.

## Step 10



- Lift the white suction motor from the right side of the device. Lift it straight up and set it off to the side of the vacuum.

## Step 11



- Unscrew the screws for the brush motor as shown, this motor controls the automatic scrubbing mechanism.

To reassemble your device, follow these instructions in reverse order.