



HTC Vive Controller Saucer Replacement

How to replace the damaged or worn saucer panels on your HTC Vive Controller.

Written By: Ryan Grewohl



INTRODUCTION

Use this guide to replace the HTC Vive controller saucer panels. You will need to remove these panels before you can access any other components of the controller. Remove the top and bottom saucer panels gently. The plastic clips that hold the saucer panels on can break if handled too roughly.



TOOLS:

- [T5 Torx Screwdriver](#) (1)
- [Phillips #00 Screwdriver](#) (1)
- [Spudger](#) (1)



PARTS:

- [HTC Vive Controller Bottom Sensor Case](#) (1)

Step 1 — Saucer Panels



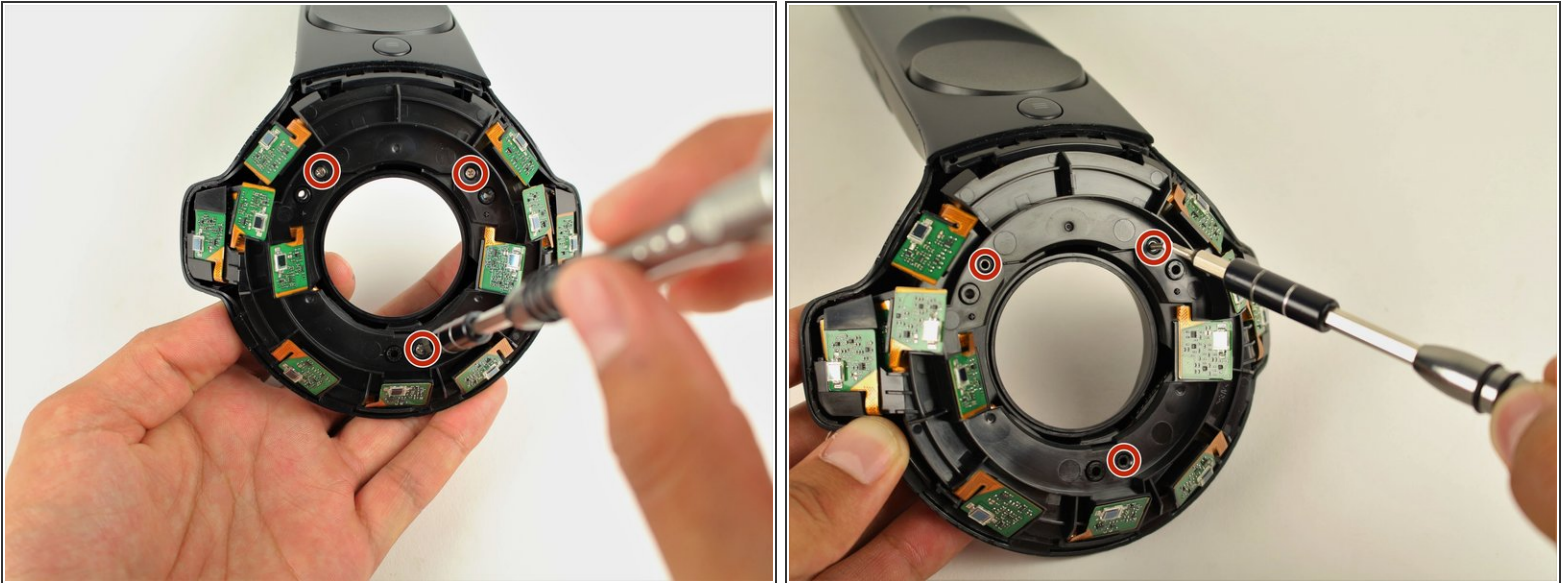
- Turn over the Vive controller so that the bottom saucer is facing up.
- Use the T5 Torx screwdriver to remove three black 21mm screws from the bottom saucer.

Step 2



- Use the nylon spudger to separate the top and bottom saucer covers all around the edges.
- Remove only the top saucer cover by pulling up with your hand.

Step 3



- Use the Phillips 00 screwdriver to remove the three silver 12.8mm screws from the exposed upper sensor panel.

Step 4



- Carefully pull away the bottom saucer cover with your hand.
 - ❗ To aid in removing the saucer cover, squeeze the base of the controller with your other hand, as shown in the second image of this step. Squeezing will make the clips easier to release and help prevent them from breaking.

To reassemble your device, follow these instructions in reverse order.