



Lenovo Ideapad 110S-11IBR Wi-Fi Card

Replacement

step by step instructions on how to replace your Lenovo Ideapad's Wi-Fi card.

Written By: Alex Daughters



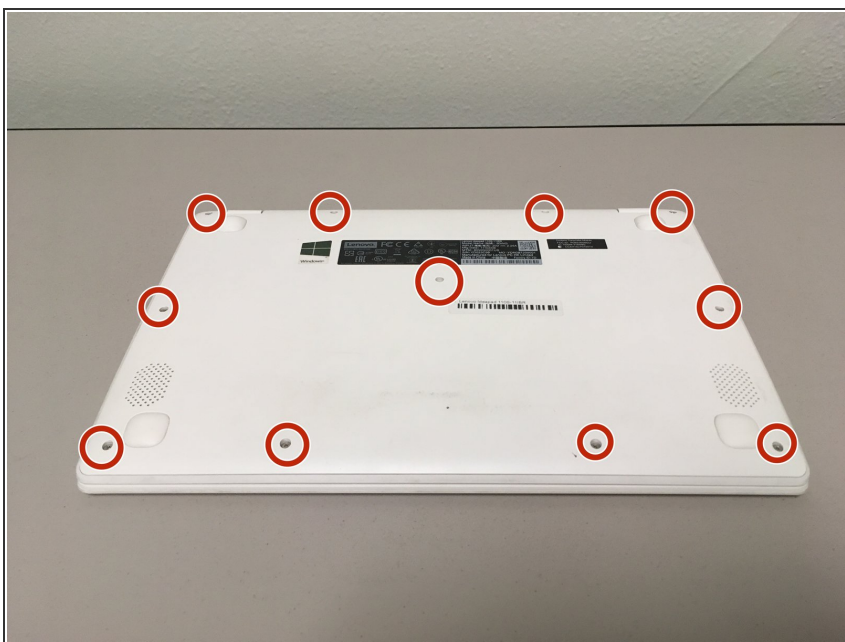
INTRODUCTION

Step by step guide to replacing the Wi-Fi card in your Lenovo 110-11IBR.

TOOLS:

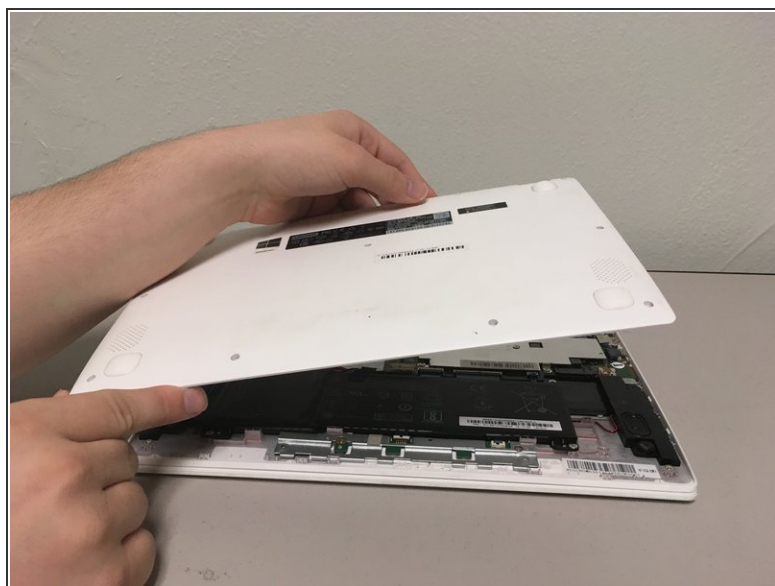
- [Phillips #00 Screwdriver](#) (1)
 - [iFixit Opening Tools](#) (1)
 - [Phillips #0 Screwdriver](#) (1)
 - [Phillips #000 Screwdriver](#) (1)
-

Step 1 — Battery



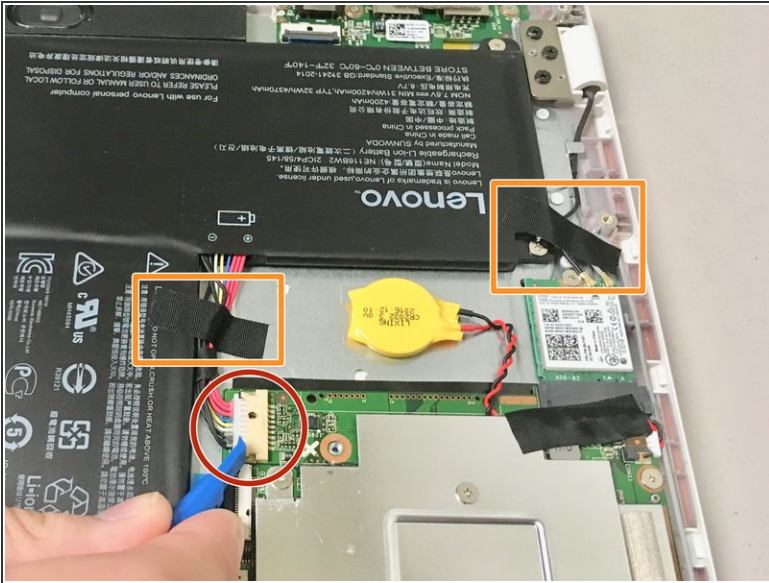
- ⚠ Ensure that your device is completely OFF before performing this procedure.
- Unscrew the eleven 4 mm Phillips #0 screws on the bottom of the device.

Step 2



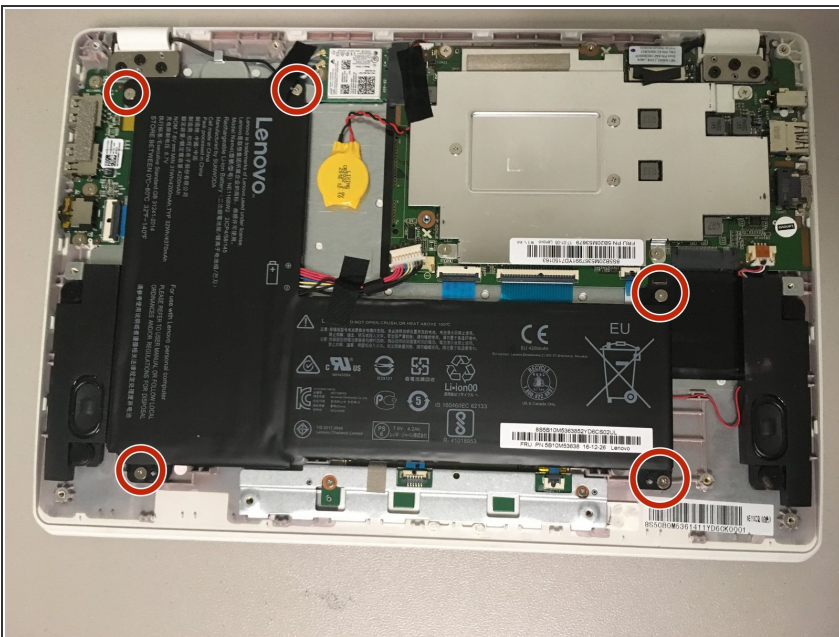
- Separate the back lid from the laptop using a plastic opening tool.
- Lift the back lid off of the device.

Step 3



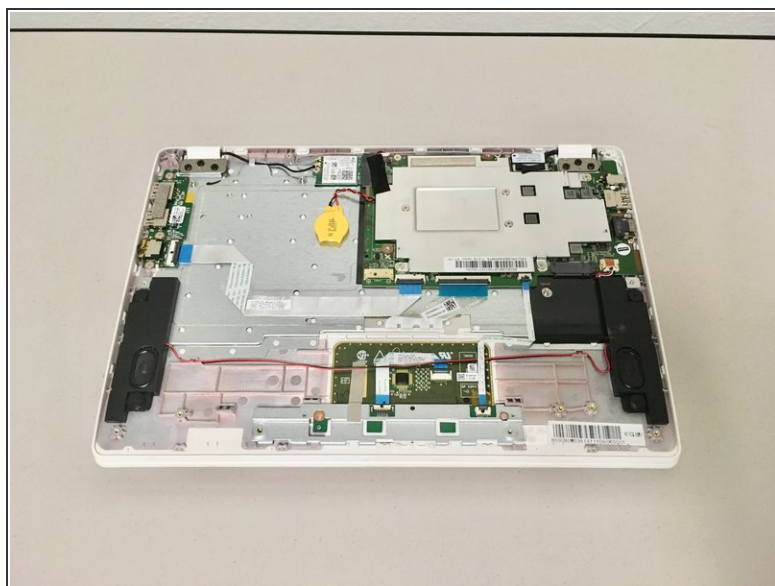
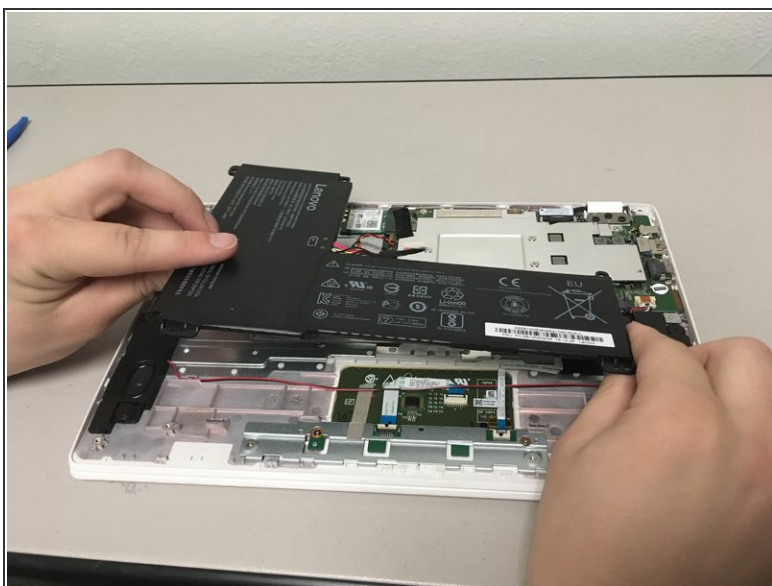
- Remove the battery connector from its socket by pulling the cable away from the hinge using your fingers or a plastic opening tool.
- ⚠ Do not pull on the socket itself or you risk damaging the motherboard.
- Remove the two pieces of tape that are holding the battery down.

Step 4



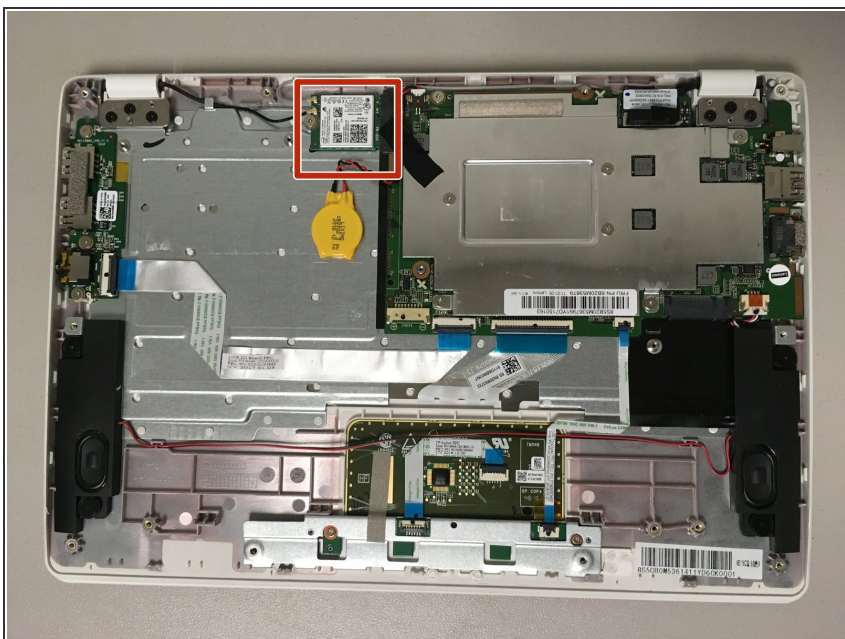
- Remove the five 4 mm Phillips screws securing the battery.

Step 5



- Lift the battery up and out of the device.

Step 6 — Wi-Fi Card



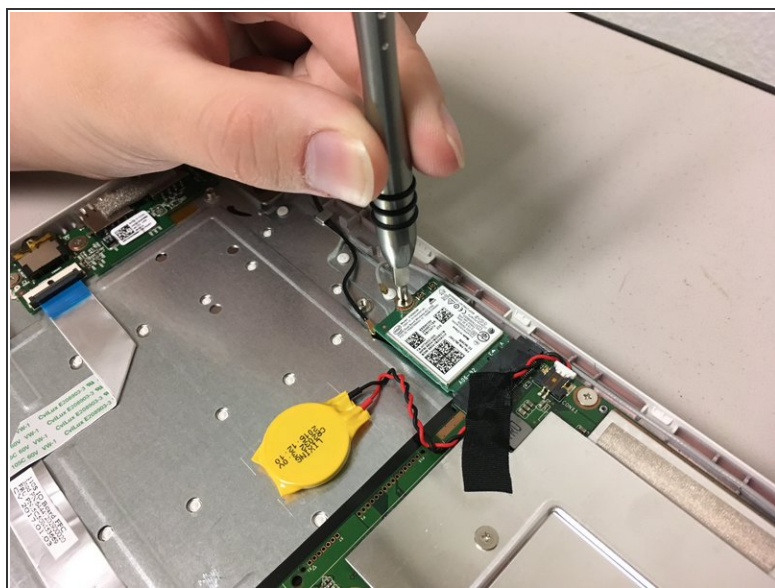
- Locate the Wi-Fi card.

Step 7



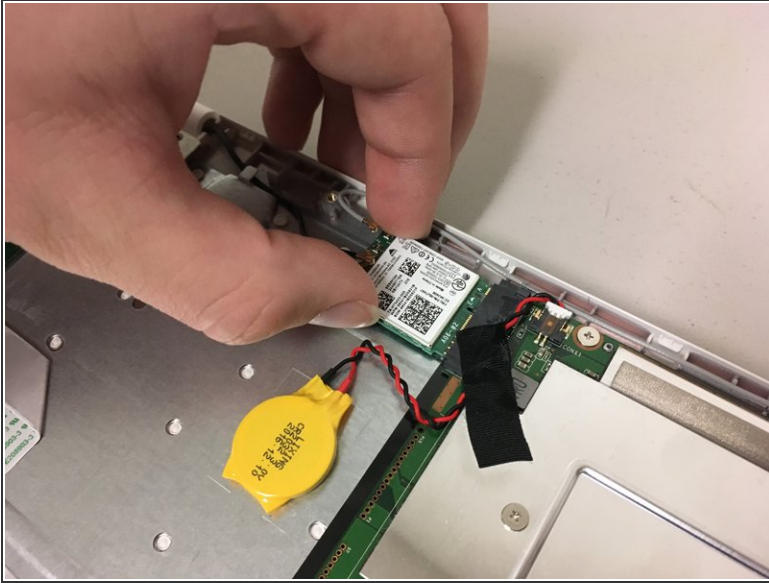
- Disconnect the two wires that are connected to the Wi-Fi card by gently pulling them up.

Step 8



- Unscrew the one 4mm screw keeping the card in place.

Step 9



- Gently pull the Wi-Fi card out of place.

To reassemble your device, follow these instructions in reverse order.