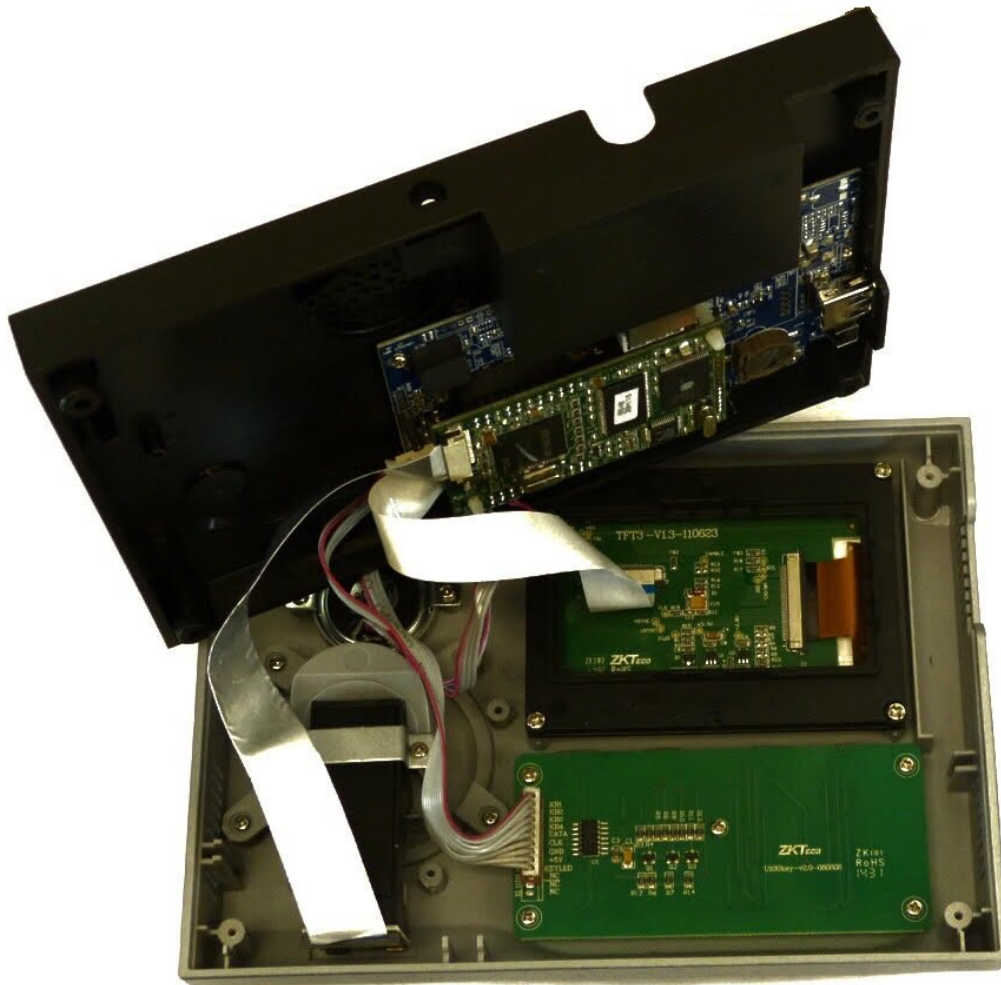




Disassembly

Disassemble uAttend bn6000

Written By: abduallah sumait



INTRODUCTION

Most of the components are inside of the unit. It is necessary to open the unit in order to access these components. Take care not to damage the ribbon cable connector upon removal. This guide will show you how to disassemble the unit.

TOOLS:

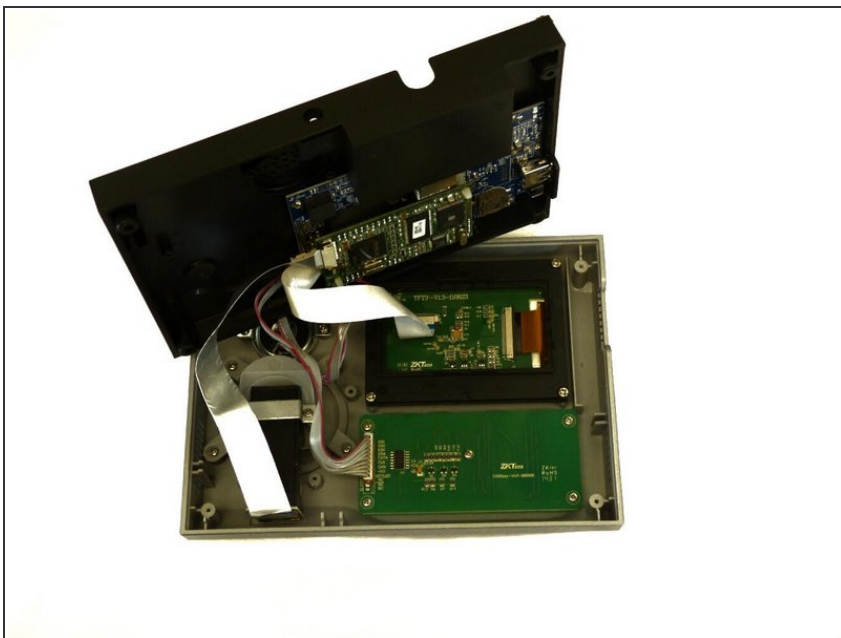
- [Phillips #2 Screwdriver](#) (1)
-

Step 1 — Disassembly



- **i** Make sure to unplug the device before starting.
- Flip the device over.
- Remove the four 10mm PH #2 screws by rotating the screwdriver counterclockwise, removing the screw from the housing completely.

Step 2



- Separate the two cover pieces carefully by pulling apart the two cover pieces away from each other.

To reassemble the unit, follow these instructions in reverse order.