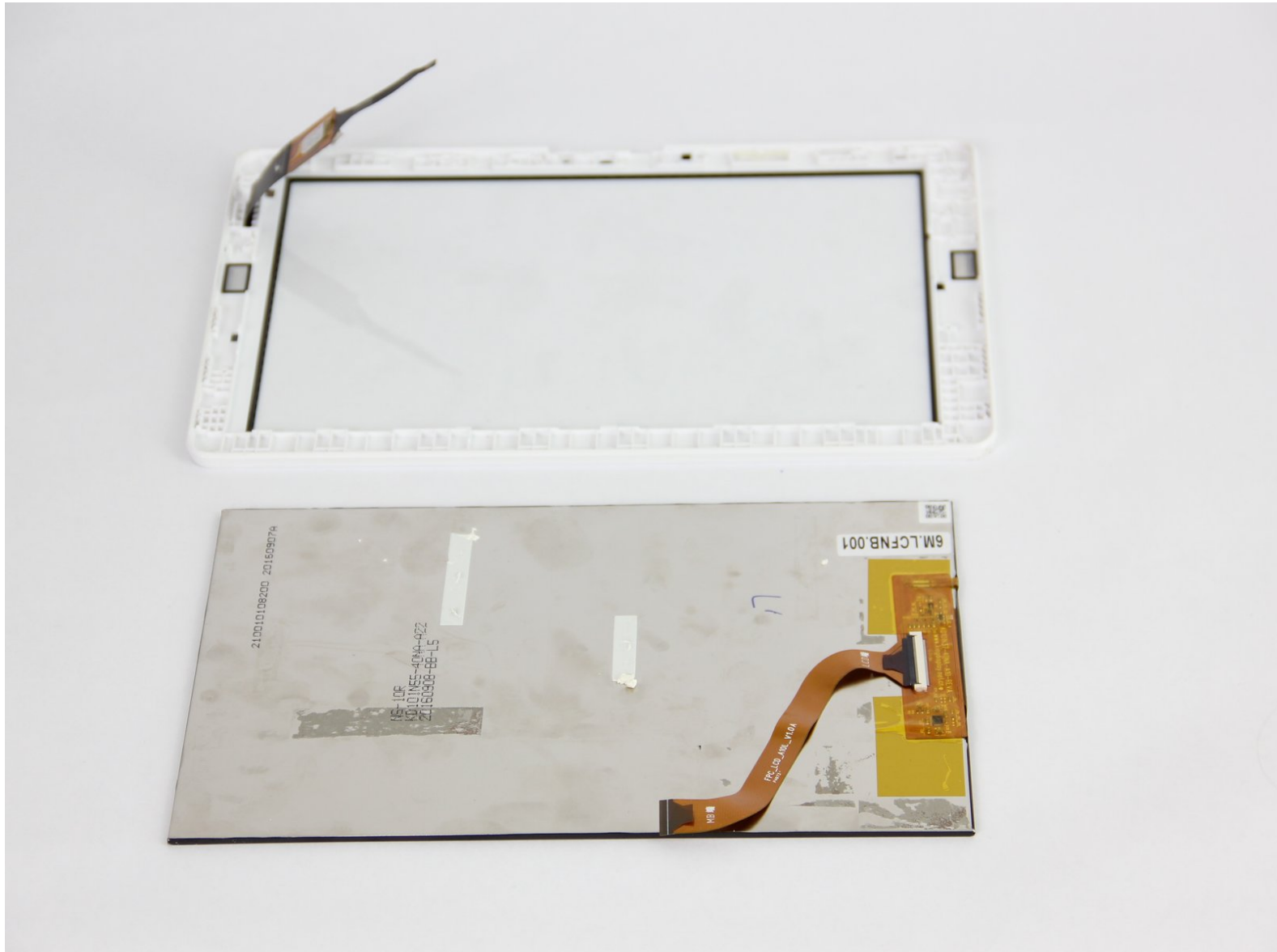




Acer Iconia One 10 B3-A30 Repair Screen Replacement

This guide will show you have to replace the screen on your device.

Written By: Austin Pickart



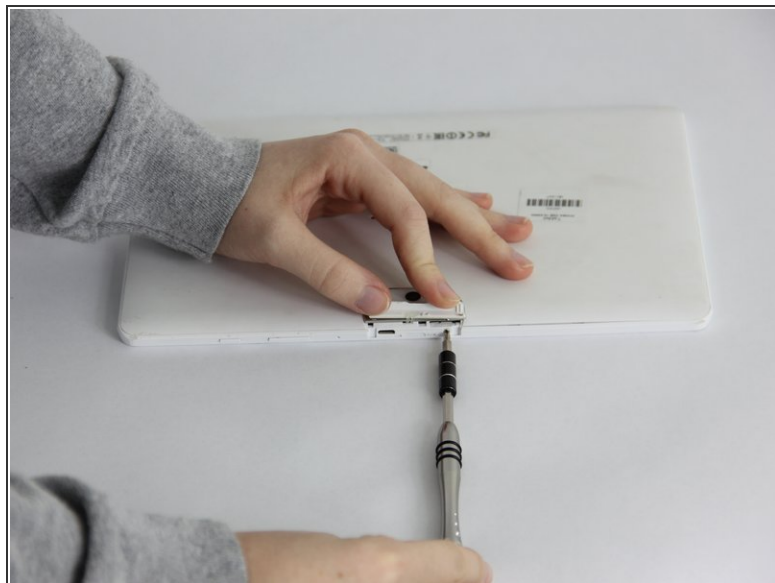
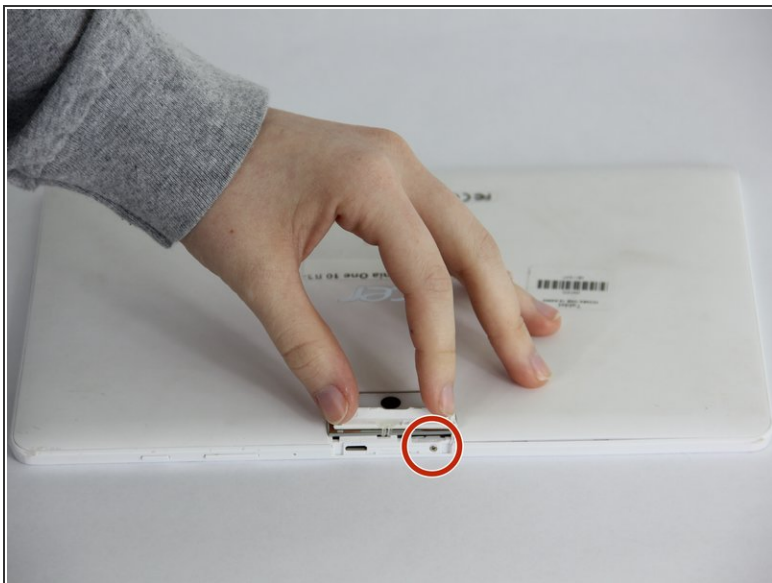
INTRODUCTION

After removing the battery, motherboard, and speakers, you can access the screen. Through the use of a Phillips #00 bit and a black plastic spudger, we will show you how to remove the screen.

TOOLS:

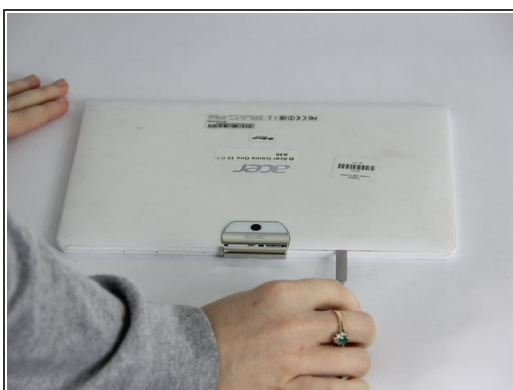
- [Metal Spudger](#) (1)
 - [Phillips #00 Screwdriver](#) (1)
 - [iFixit Opening Tools](#) (1)
 - [Spudger](#) (1)
-

Step 1 — Battery



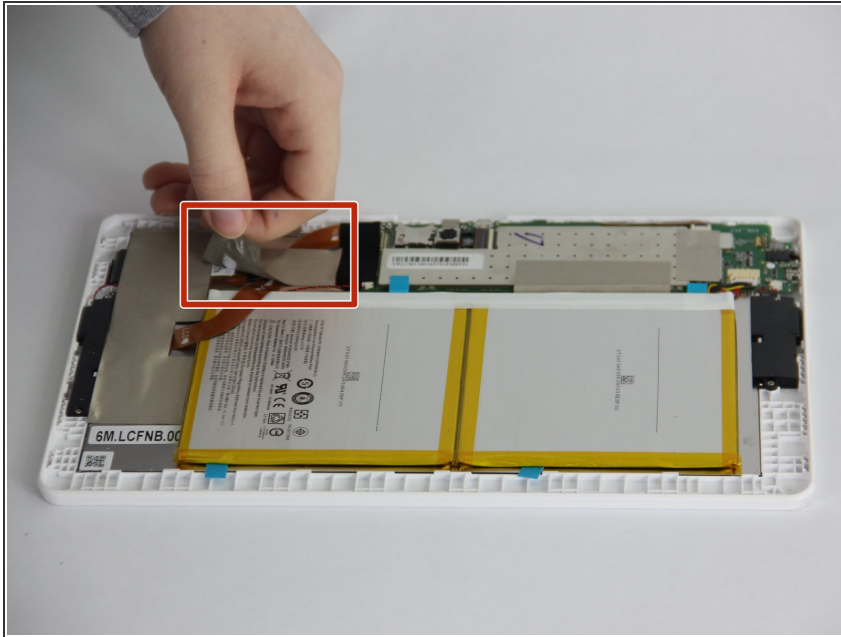
- ⚠ Make sure the device is powered off.
- Open media port cover at the top of the tablet.
- Use the Phillips #00 screwdriver to remove the 1 mm screw.

Step 2



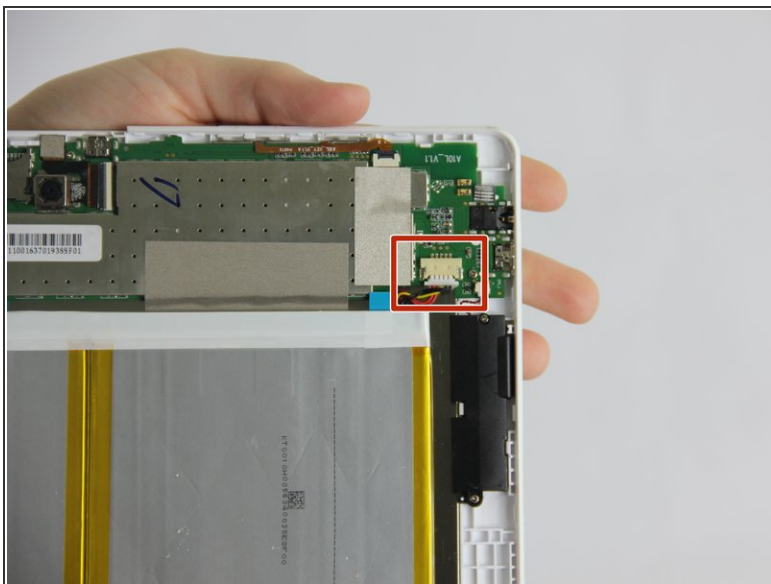
- Using the metal spudger, carefully pry open the back cover.

Step 3



- Remove small section of grey tape.

Step 4



- Unplug the connection cord from the motherboard.

Step 5



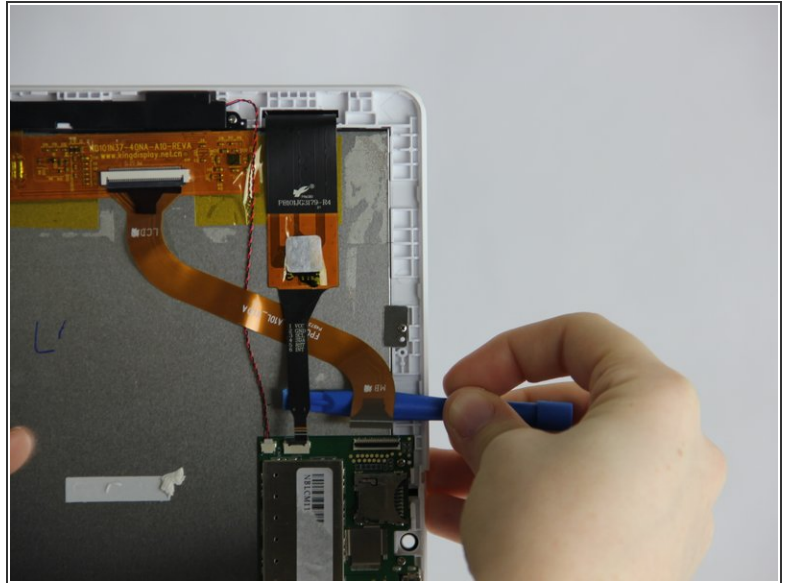
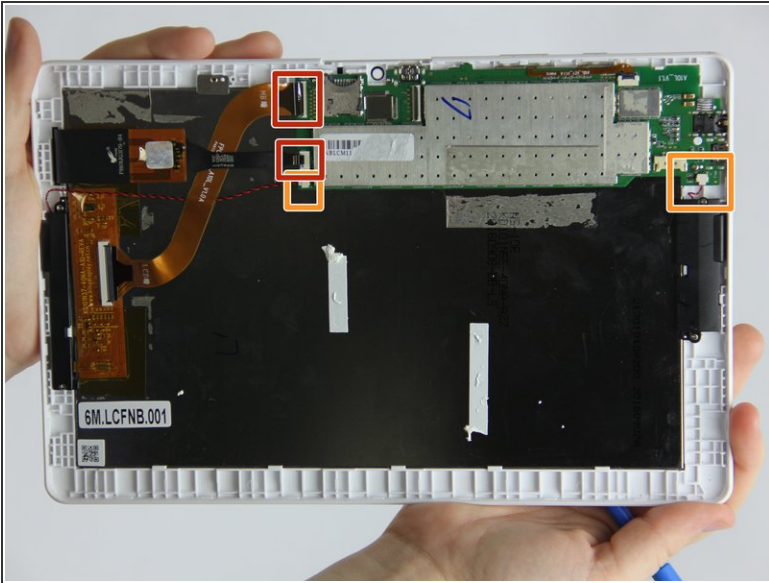
- Try to remove the battery by pulling on the blue tabs.
 - If unsuccessful, use the black plastic spudger to gently break the glue bonds underneath and pull up to remove the battery.
- ⚠ Be very cautious not to puncture or bend the battery.

Step 6 — Motherboard



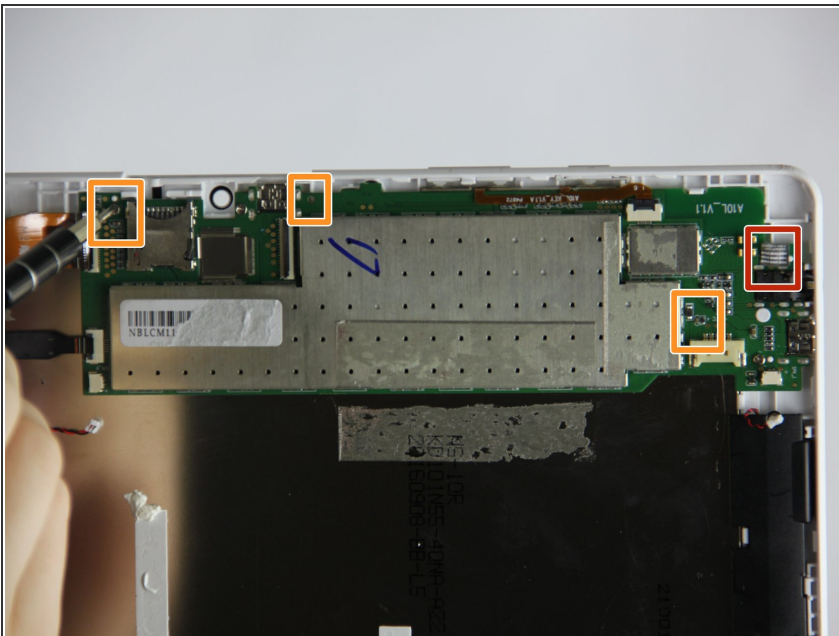
- Remove all of the tape surrounding the motherboard.

Step 7



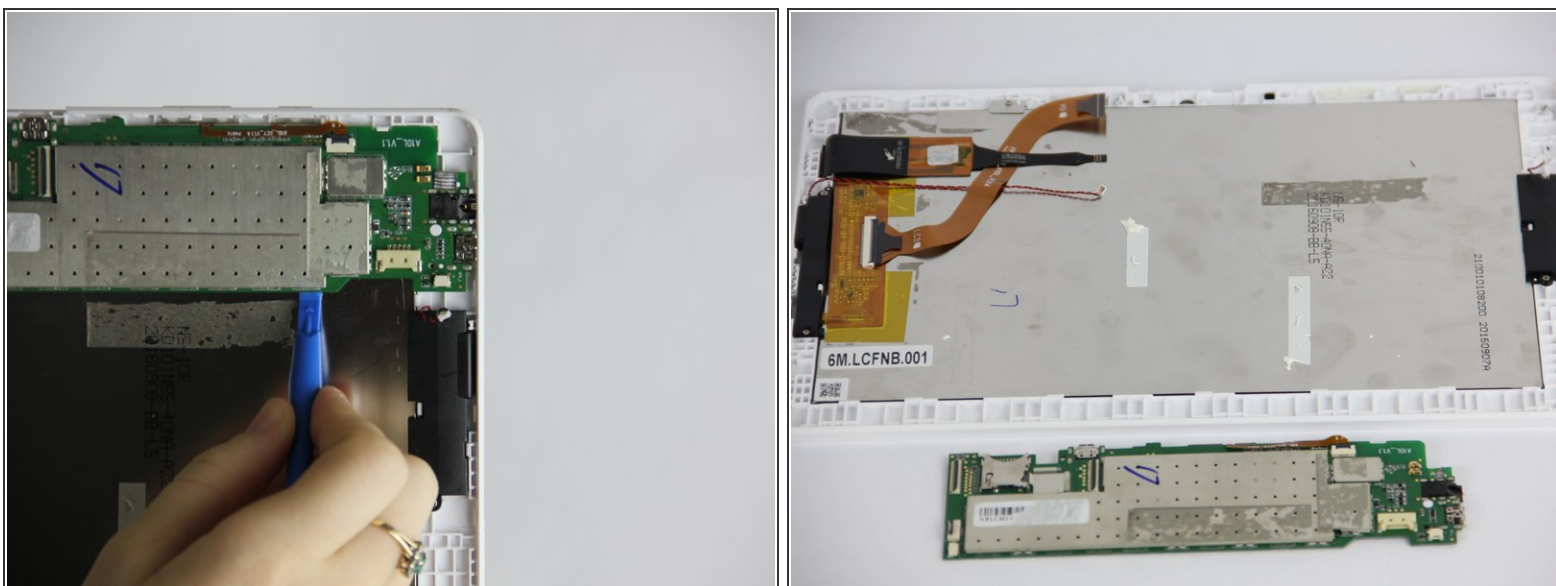
- Starting with the 2 large connections use the plastic opening tool to gently pry on the connections and pop them out.
- Now, disconnect the two smaller black and red cords from the motherboard.

Step 8



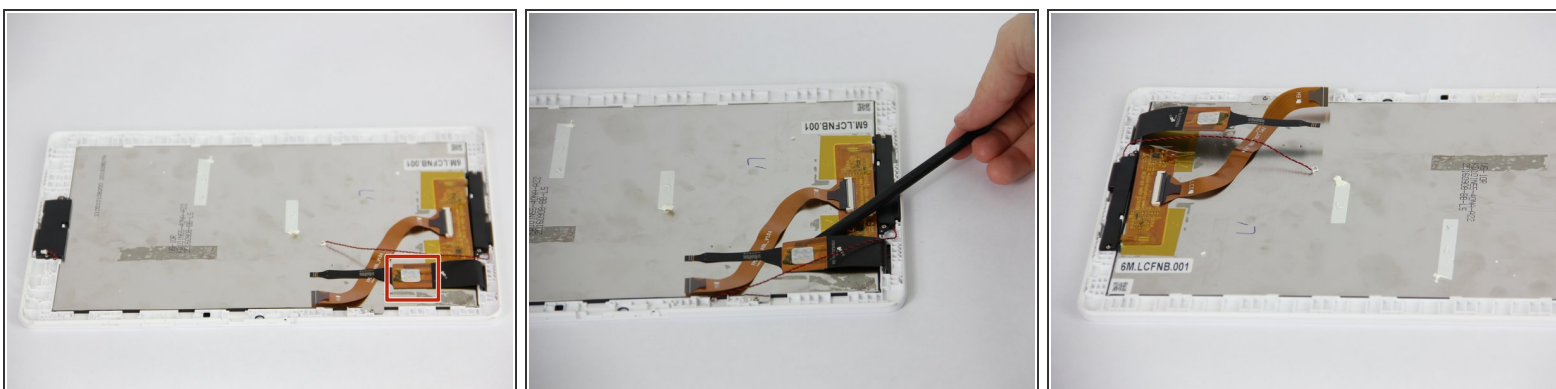
- Scrape away the small square sticker to reveal one small screw. Use the Phillips #00 screwdriver to remove the screw.
- Using the same screwdriver remove the other three screws on the motherboard.

Step 9



- Using the small plastic tool, carefully pry the motherboard out of the device.

Step 10 — Screen



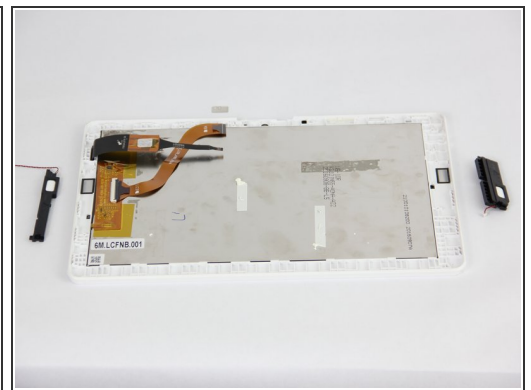
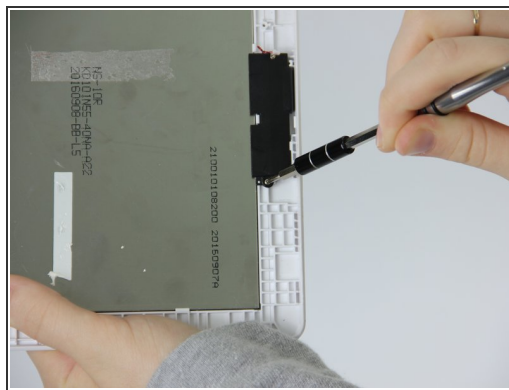
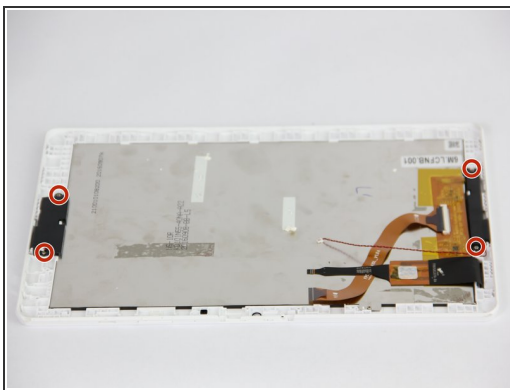
- Using a plastic spudger pry the square connection away from the screen.

Step 11



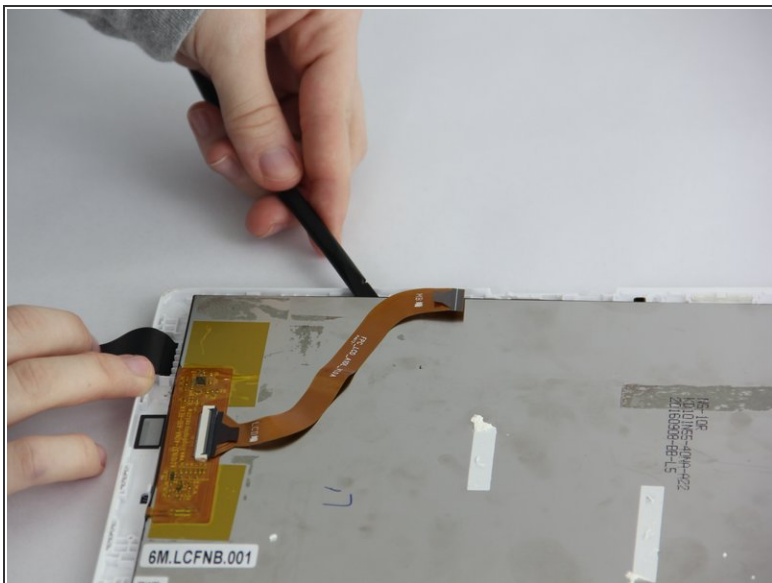
- Using the Philips #00 head unscrew the screw holding in the small plate.

Step 12



- Using the Philips #00 unscrew the remaining 4 screws along the two speakers.

Step 13



- Using the plastic spudger gently pry the screen along the plastic clips.
- Once at least 1/2 of the screen is unclipped slide it out of the frame using hands.

To reassemble your device, follow these instructions in reverse order.