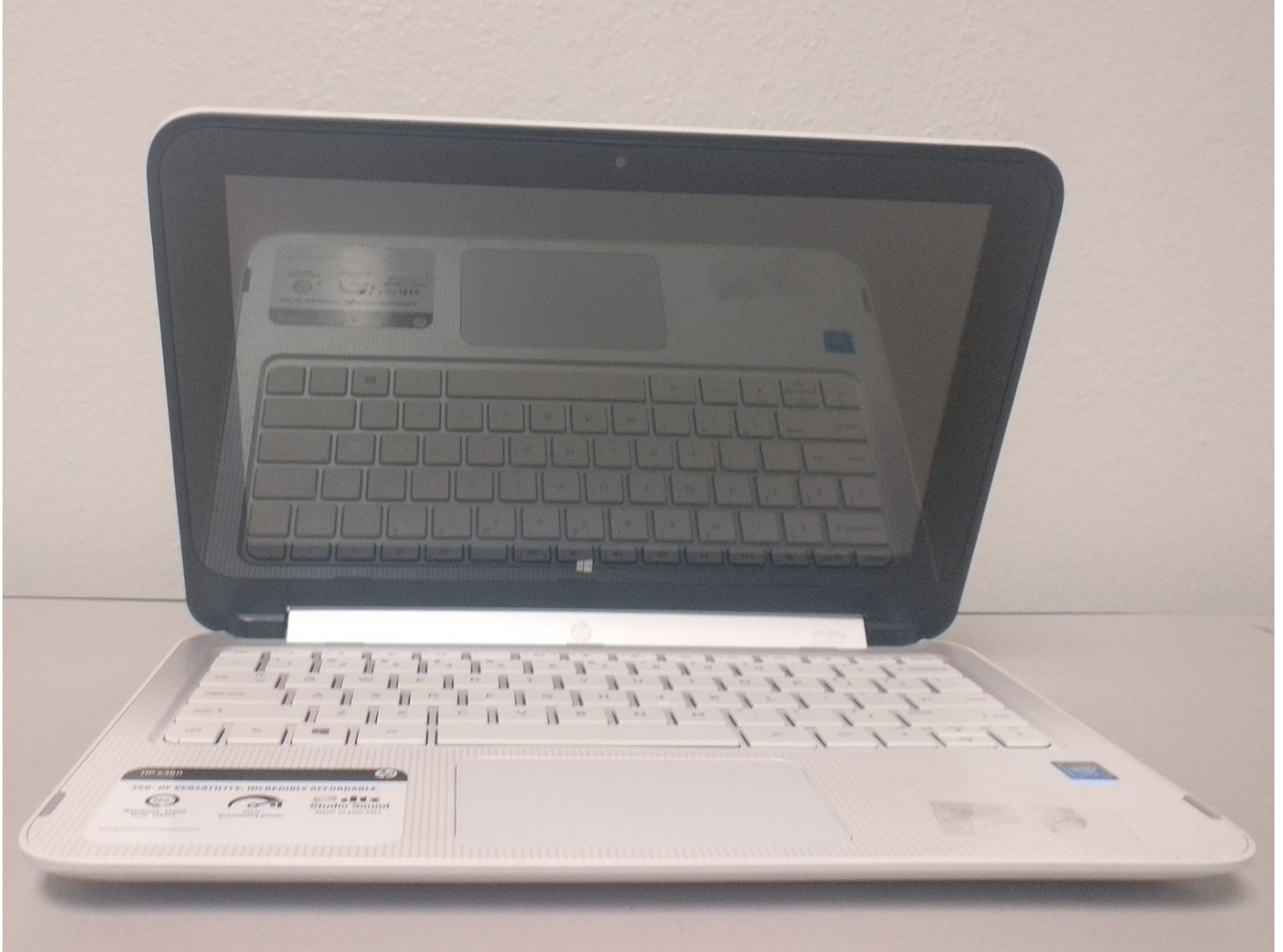




HP Pavilion x360 11-p110nr Battery Replacement

If your computer keeps turning off, your...

Written By: AljeannaJohnson



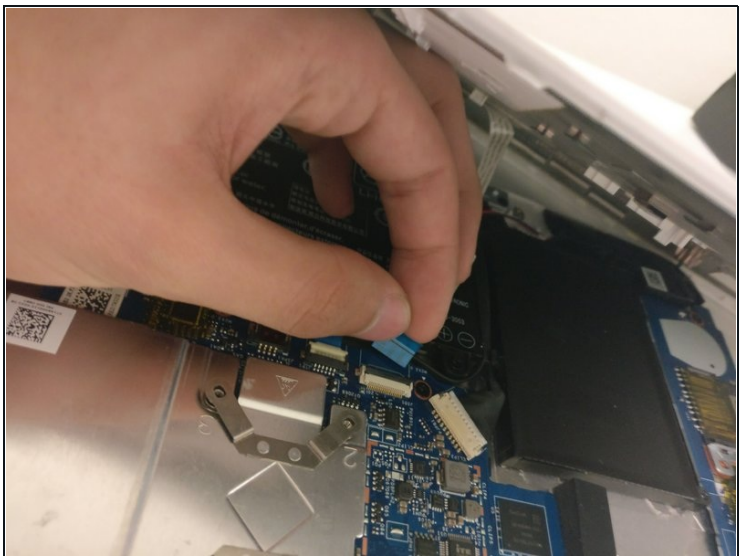
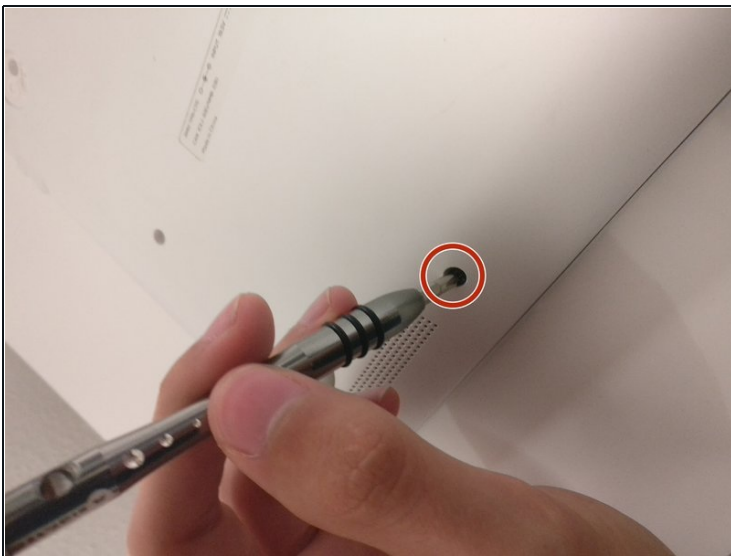
INTRODUCTION


If your computer keeps turning off, your battery may be damaged. Click [here](#) for more information on why your computer may be turning off.

TOOLS:

[Phillips #0 Screwdriver](#) (1)

Step 1 — Battery



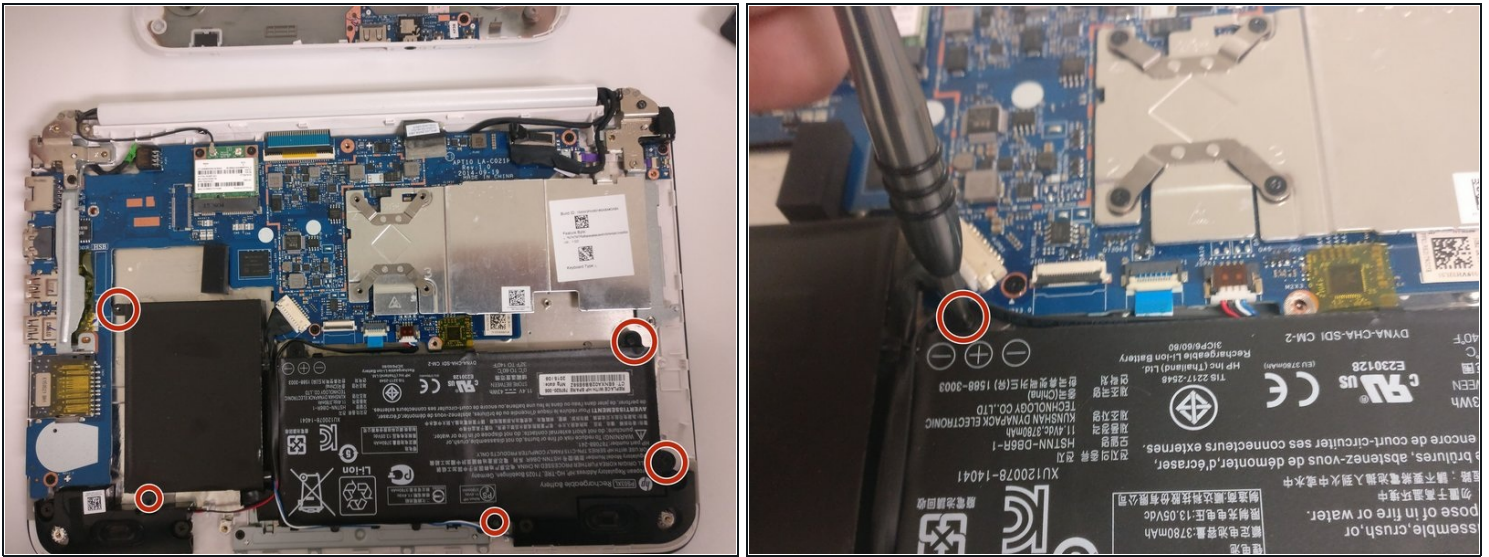
 First, unplug the power cord from the power outlet and disconnect the charger.

- Flip over the laptop.
- Unscrew the back cover using the Phillips #0 screwdriver.

 Deattach the cover carefully and **do not** remove the cover completely as there is a safety plastic that needs to be removed first.

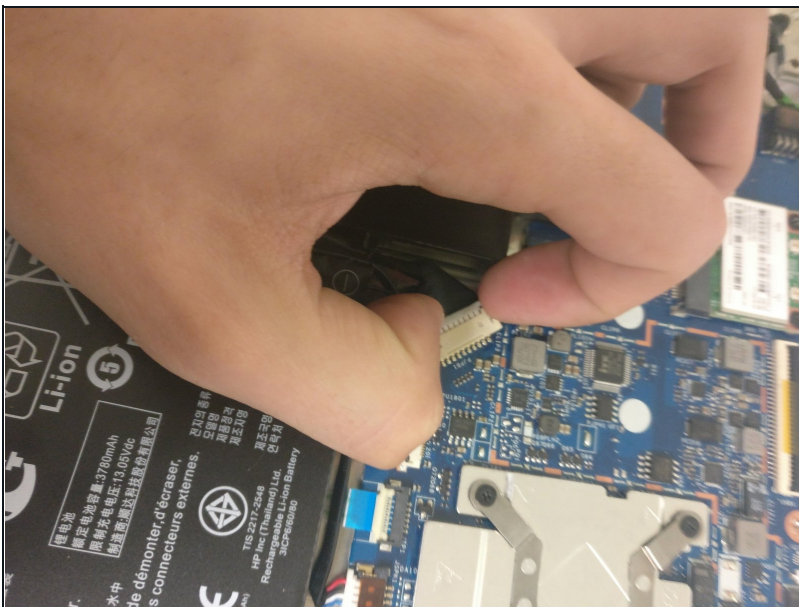
- Remove the blue safety plastic in an orthogonal motion from where it is inserted carefully.

Step 2



- Remove the five 1 mm screws connecting the battery to the base of the computer using a Phillips #0 screwdriver.

Step 3



- Carefully disconnect the three connectors by pulling them away from the slot.
 - ① If they seem hard to pull, try to wiggle them loose to making it easier to pull.
- Pull out the battery after everything is disconnected.

To reassemble your device, follow these instructions in reverse order.