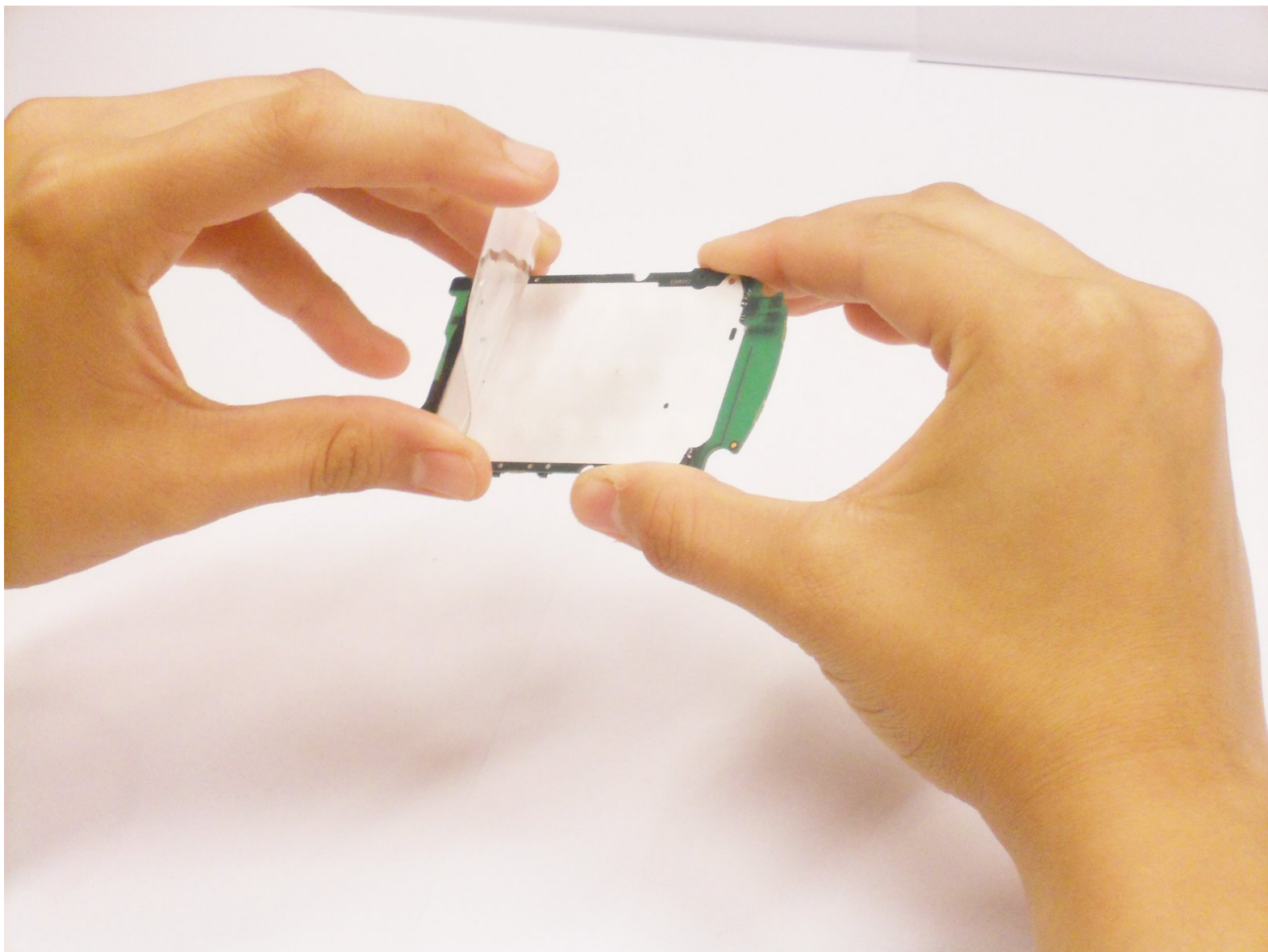




Motorola MOTO W755 Cell Phone Functional Keypad Replacement

This guide shows how to replace the function keypad.

Written By: Roberta Glenn



INTRODUCTION

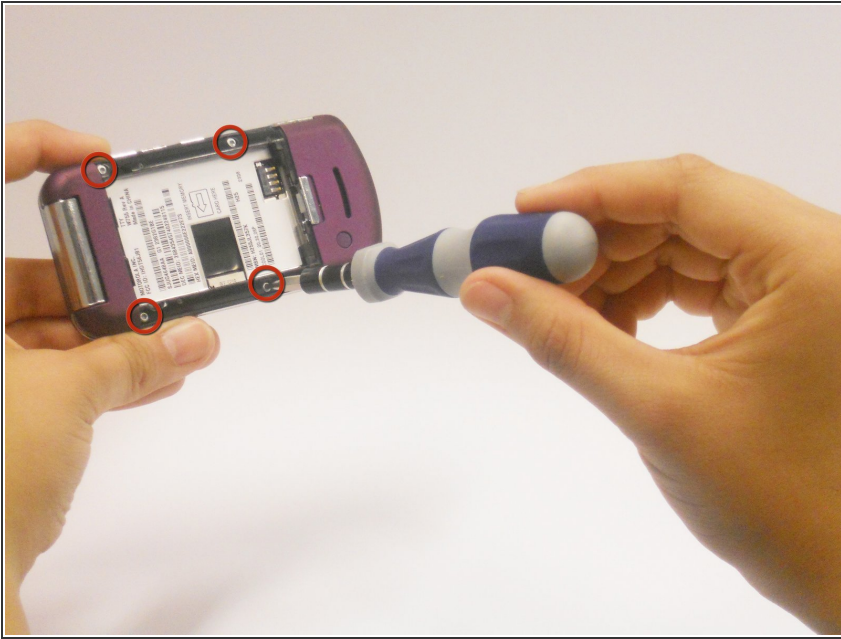
Improve keyboard function by replacing the functional keypad for your Motorola MOTO phone.



TOOLS:

- [iFixit Opening Tools](#) (1)
 - [T5 Torx Screwdriver](#) (1)
-

Step 1 — Main Logic Board



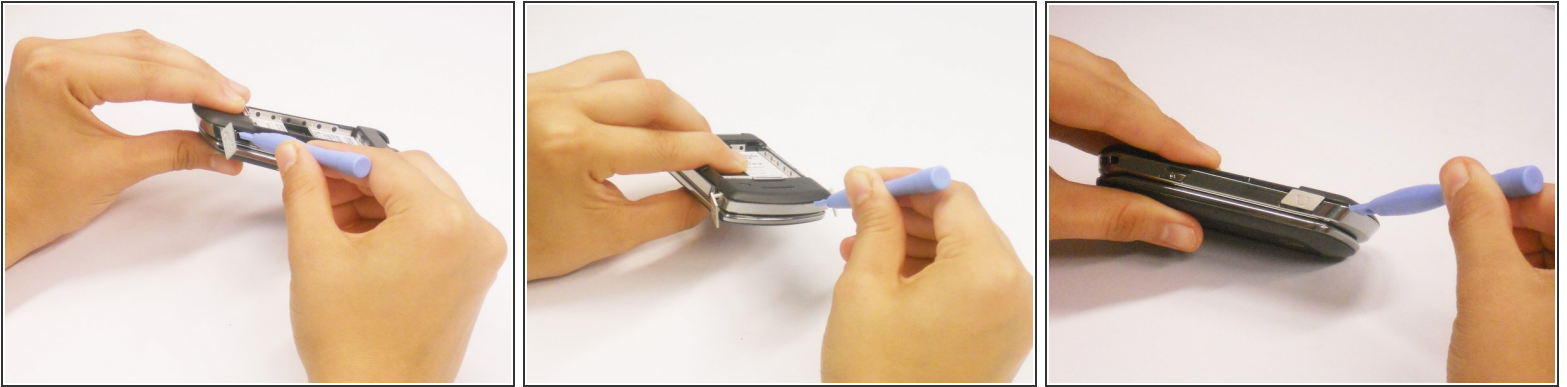
- Using the T5 Torx-screwdriver, remove the four 5.5 mm screws on the back panel.

Step 2



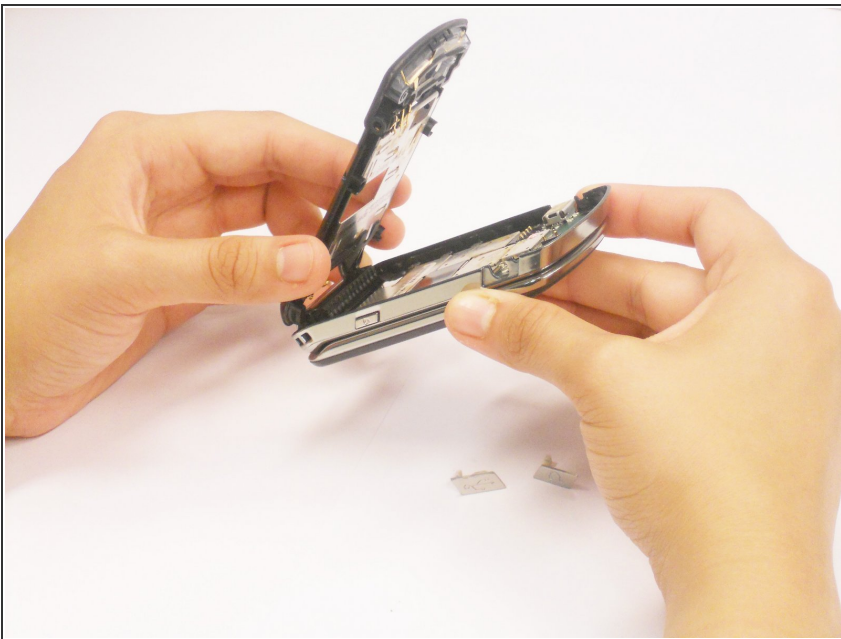
- Using a plastic opening tool, carefully peel back the rubber strip located at the bottom of the keypad
- Remove the two T5 Torx-screws underneath the rubber strip using the T5 Torx-screwdriver

Step 3



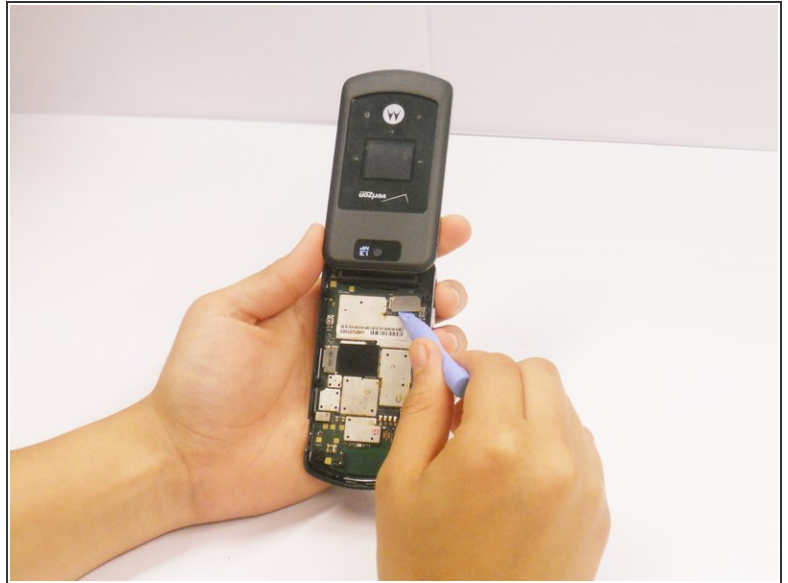
- Using the flat end of the plastic opening tool, insert it in the gap between the charging port and plastic at the bottom left side of the phone.
- Slide the opening tool around the phone clockwise until you reach the audio port.
- Twist the opening tool until the plastic pops off from the body of the phone. This make require a small amount of force.

Step 4



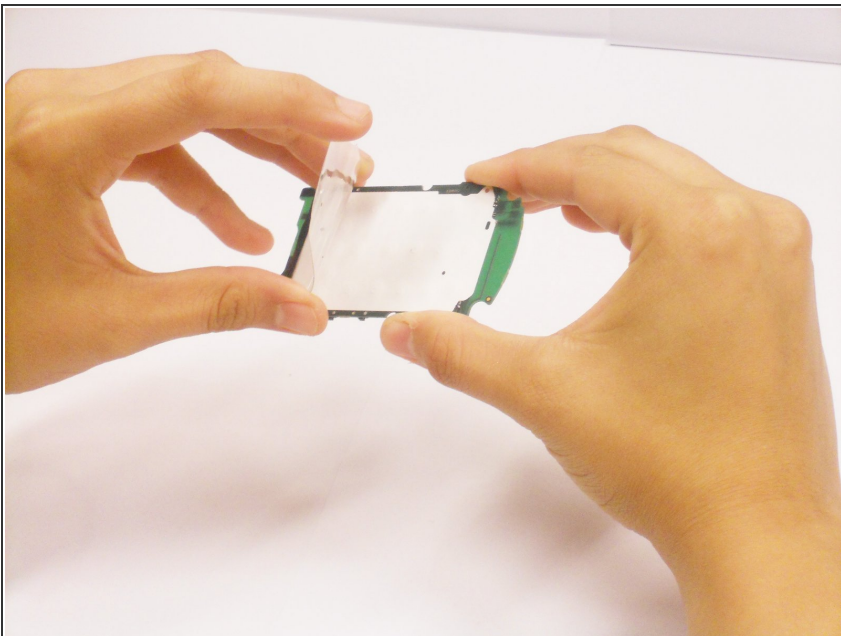
- Remove the plastic covering completely from the body of the phone.

Step 5



- Using the plastic opening tool, carefully unclip the cable ribbon from the main logic board. Be sure not to tear it because the flex is very fragile.
- Remove the main logic board.

Step 6 — Functional Keypad



- Lift the plastic cover of the keypad from the top of the main logic board and peel it off.

To reassemble your device, follow these instructions in reverse order.