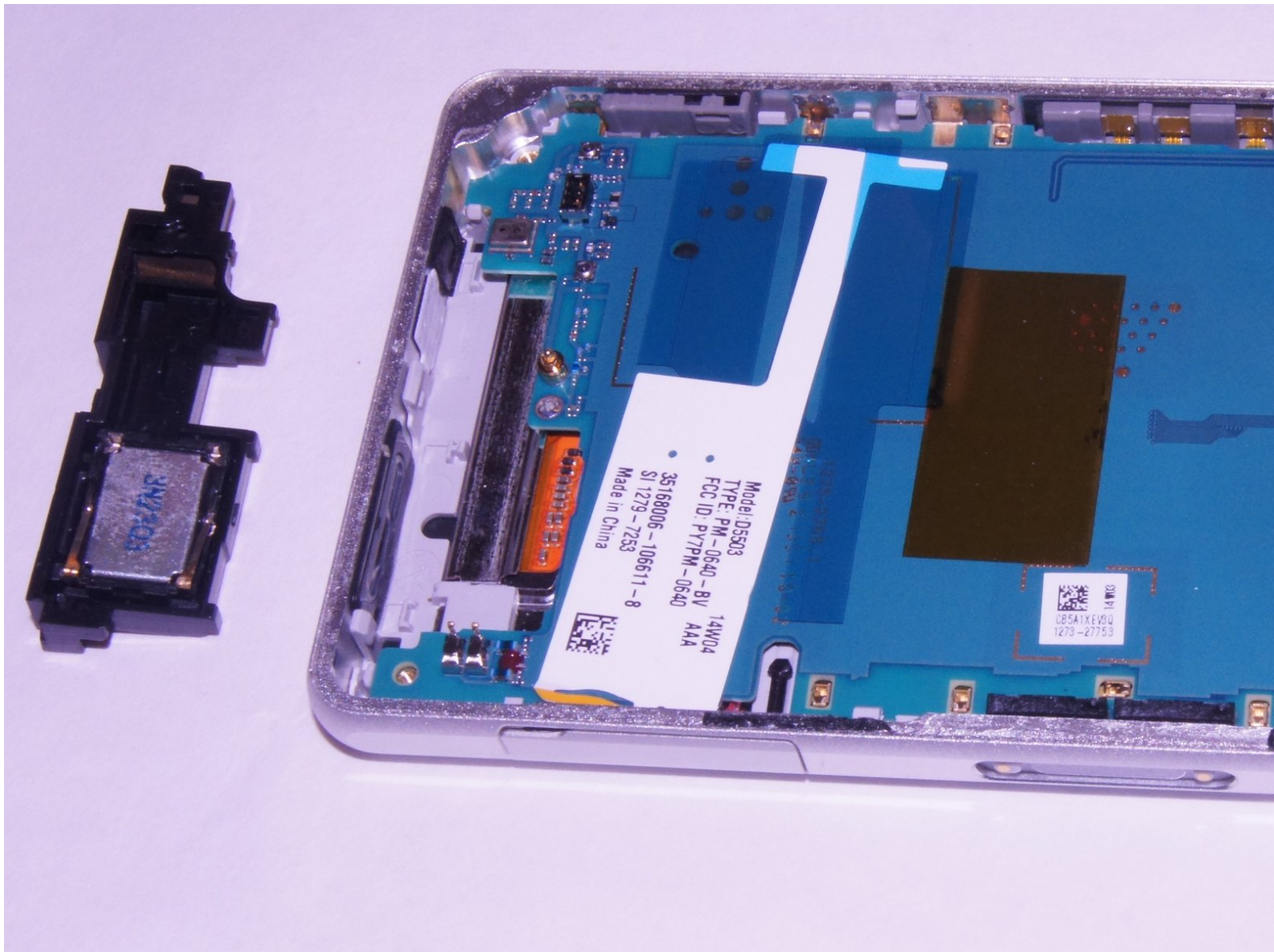




Sony Xperia Z1 Compact External Speaker Replacement

A replacement of the external speaker in the Sony Xperia Z1 Compact.

Written By: Kevin Bergstrom



INTRODUCTION

This guide will replace the external speaker in the Sony Xperia Z1 Compact.



TOOLS:

- [iFixit Opening Tools](#) (1)
- [JIS #00 Screwdriver](#) (1)
- [Suction Handle](#) (1)
- [Heat Gun](#) (1)
- [Phillips #0 Screwdriver](#) (1)
- [Spudger](#) (1)



PARTS:

- [Sony Xperia Z1 Compact Speaker](#) (1)

Step 1 — Back Cover



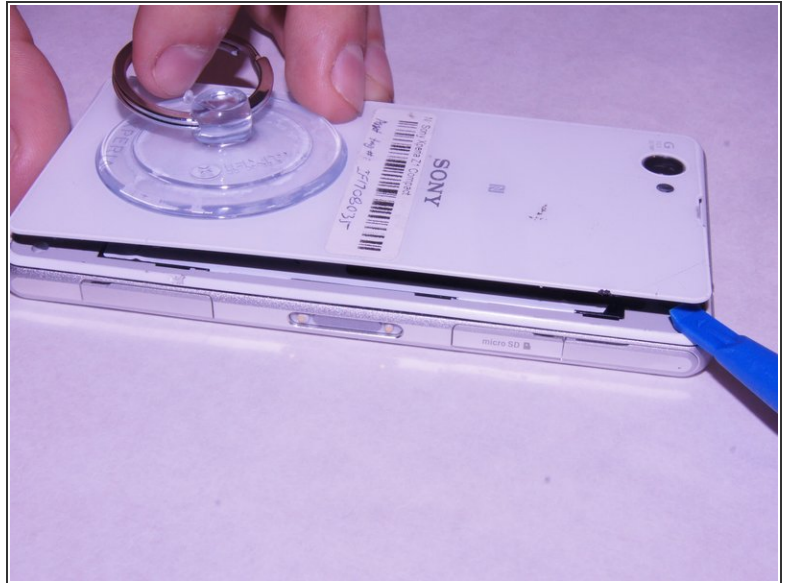
- Heat along the edges of the back cover using a heat gun to soften the glue.

Step 2



- Attach the small suction cup to the back cover near the bottom of the phone.
- Pull up on the suction cup and insert the plastic opening tool in between the back cover and the rest of the phone.

Step 3



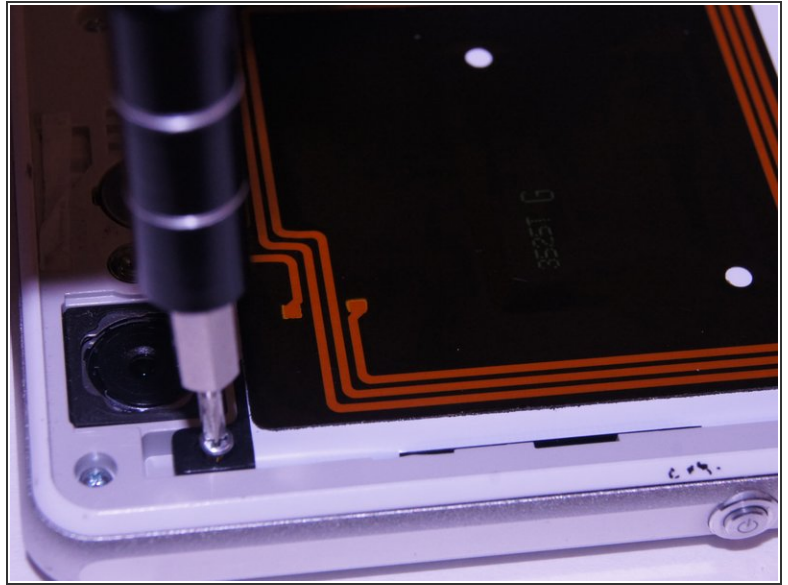
- Move the spudger around the edge of the back cover to separate it from the black adhesive.
- ⓘ Separating the back cover from the rest of the phone ruins the adhesive which makes it no longer waterproof.

Step 4 — Battery



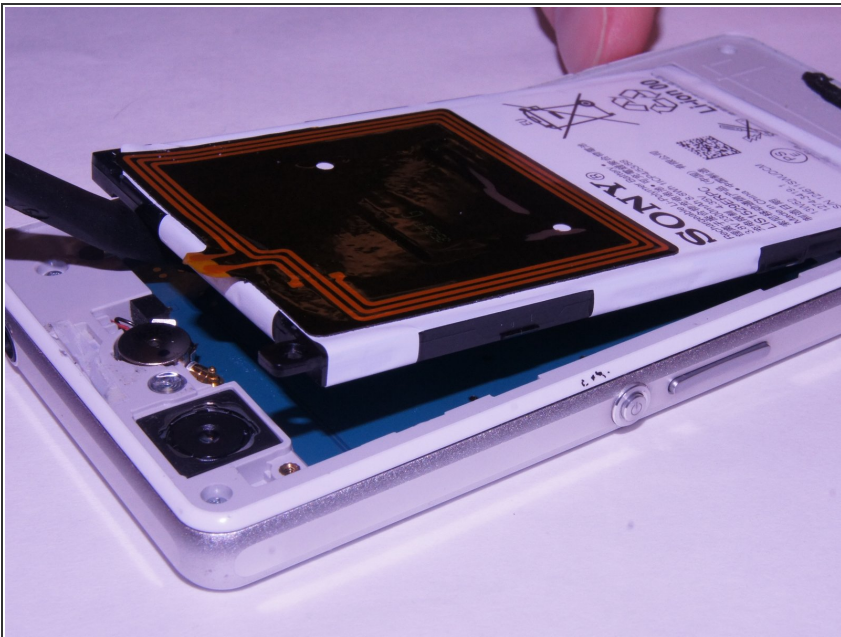
- Carefully disconnect the battery from the logic board by using the plastic spudger as a lever.

Step 5



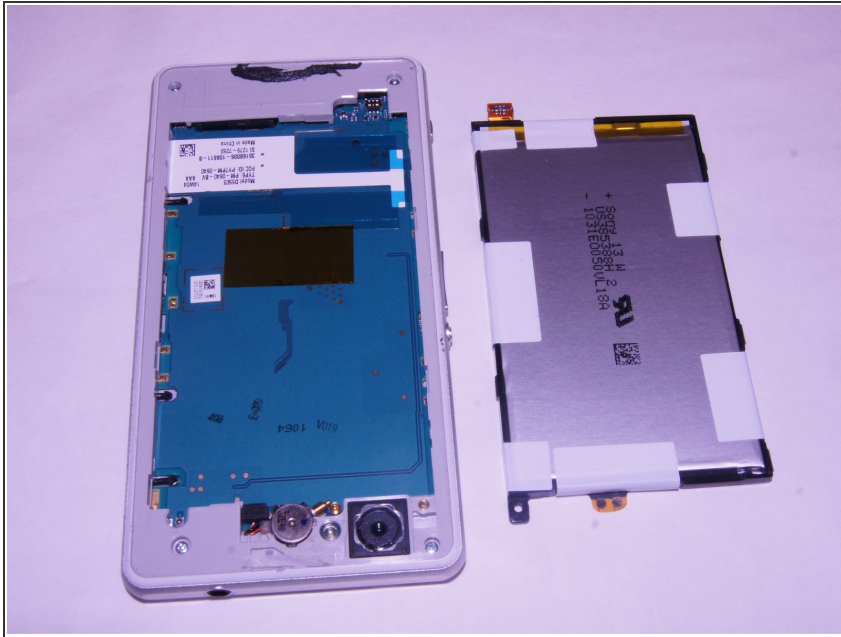
- Remove the single 1 x 3.0 mm screw holding the battery in using the JIS #00 screwdriver.

Step 6



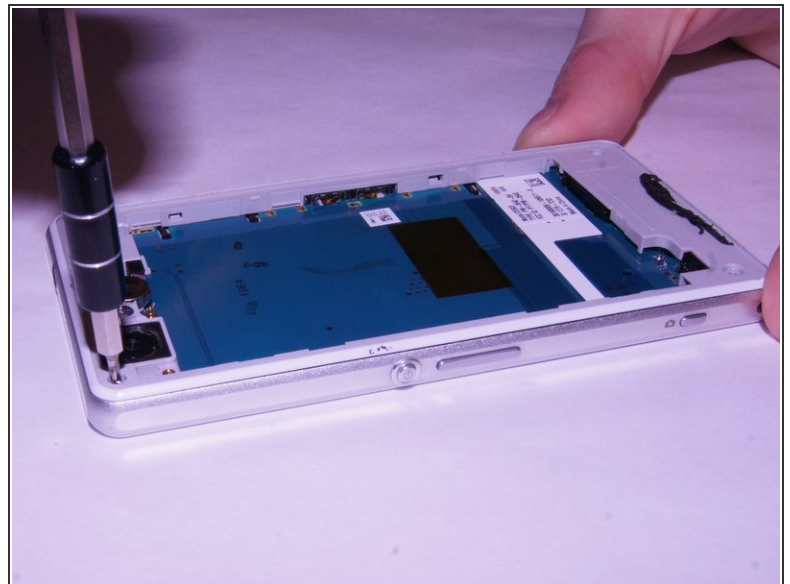
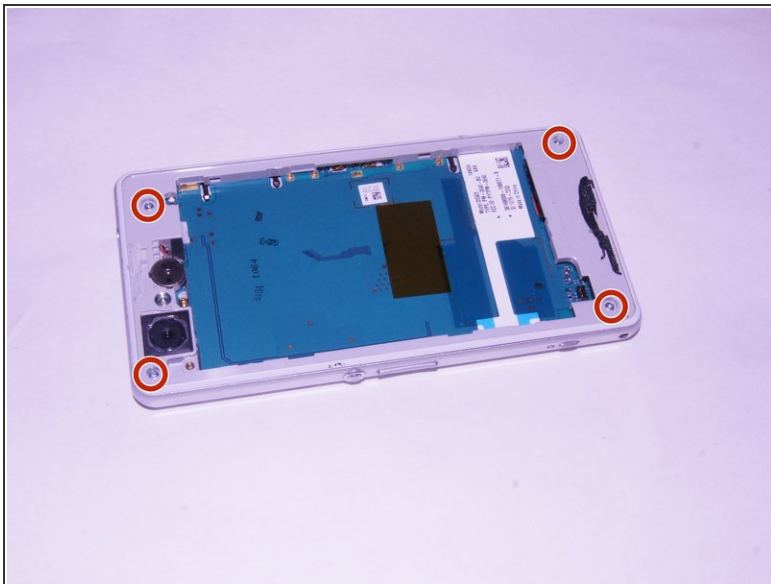
- Pry the battery up from the ends using the plastic spudger until the battery pops out of the enclosure.

Step 7



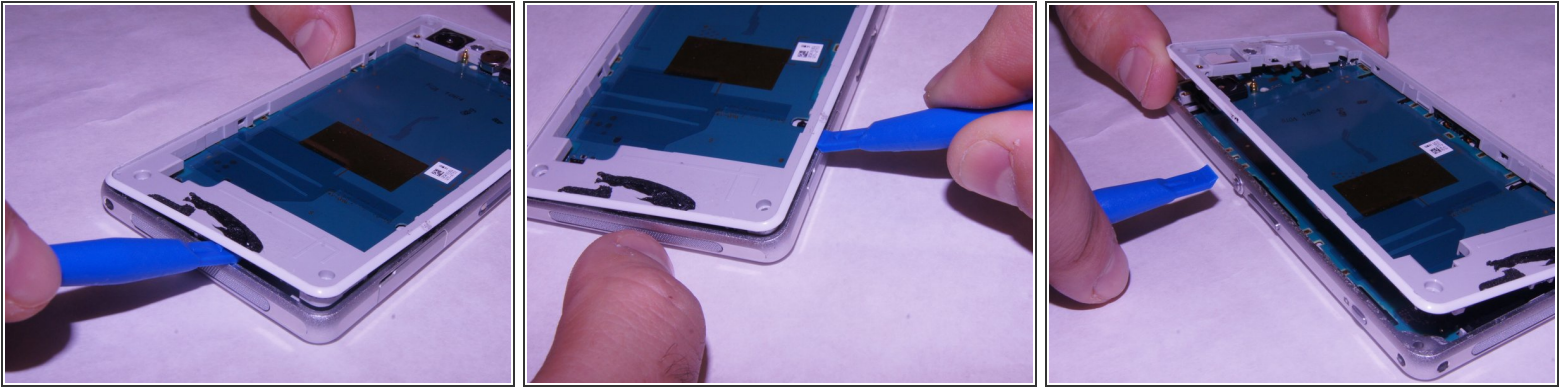
- Remove the battery from the device

Step 8 — External Speaker



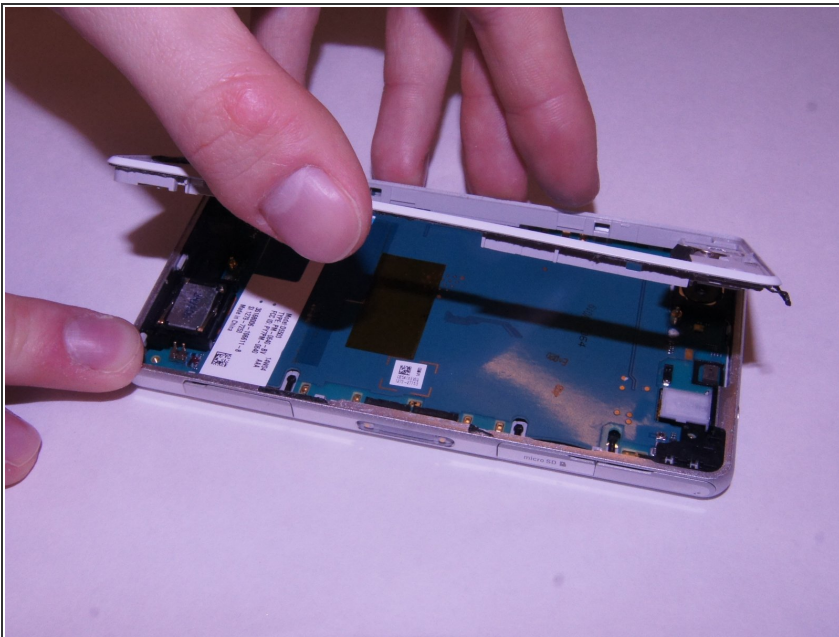
- Unscrew the four screws on the corners of the back frame using the JIS #00 screwdriver.

Step 9



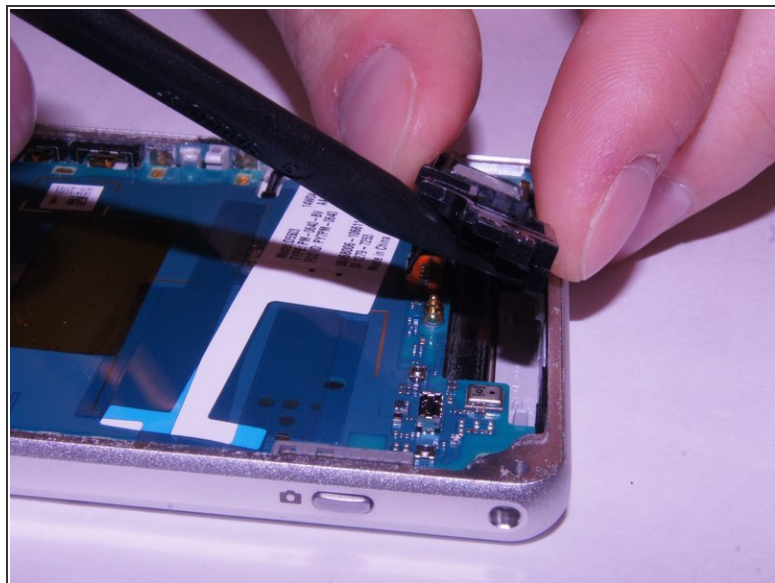
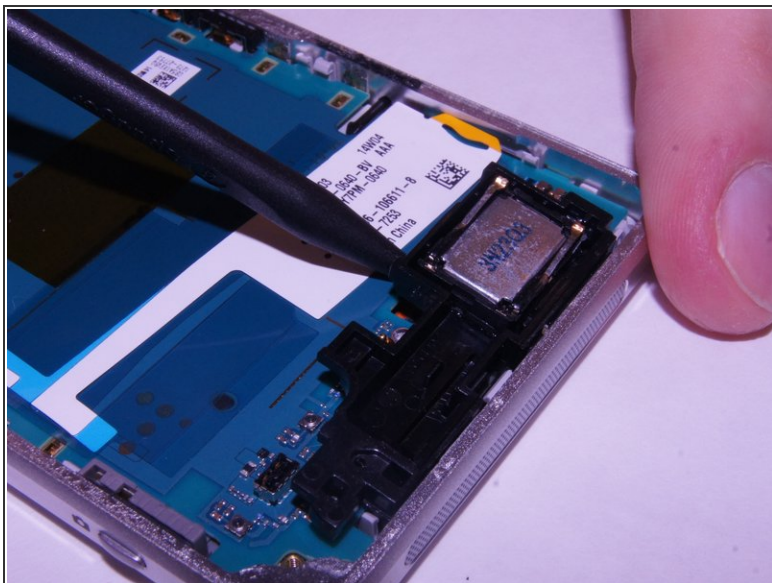
- Wedge the plastic opening tool under the back frame. Move the plastic opening tool around the entire frame to separate it from the adhesive.

Step 10



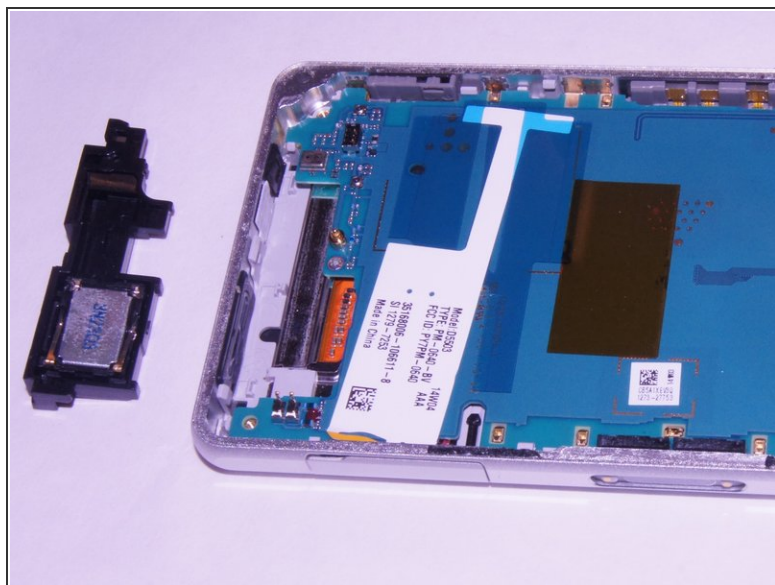
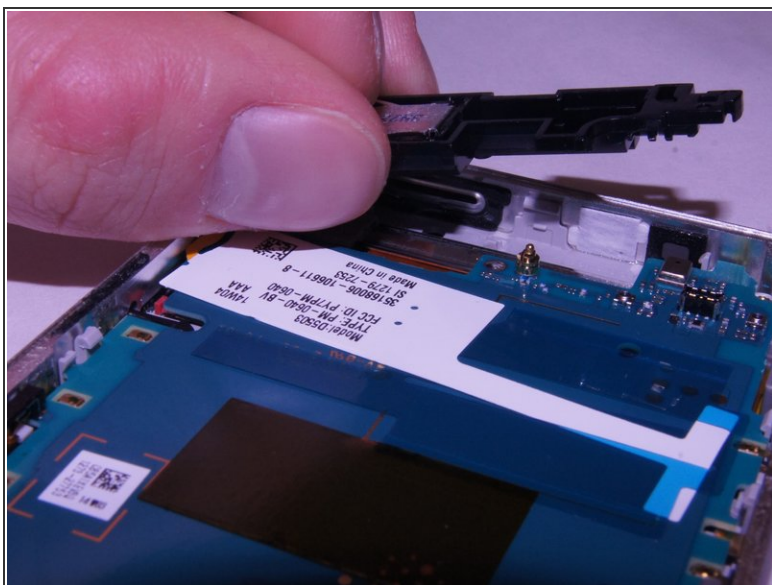
- Remove the back frame.

Step 11



- Wedge the spudger underneath the external speaker. Pull up on the external speaker using the spudger.

Step 12



- Remove the external speaker.

To reassemble your device, follow these instructions in reverse order.